

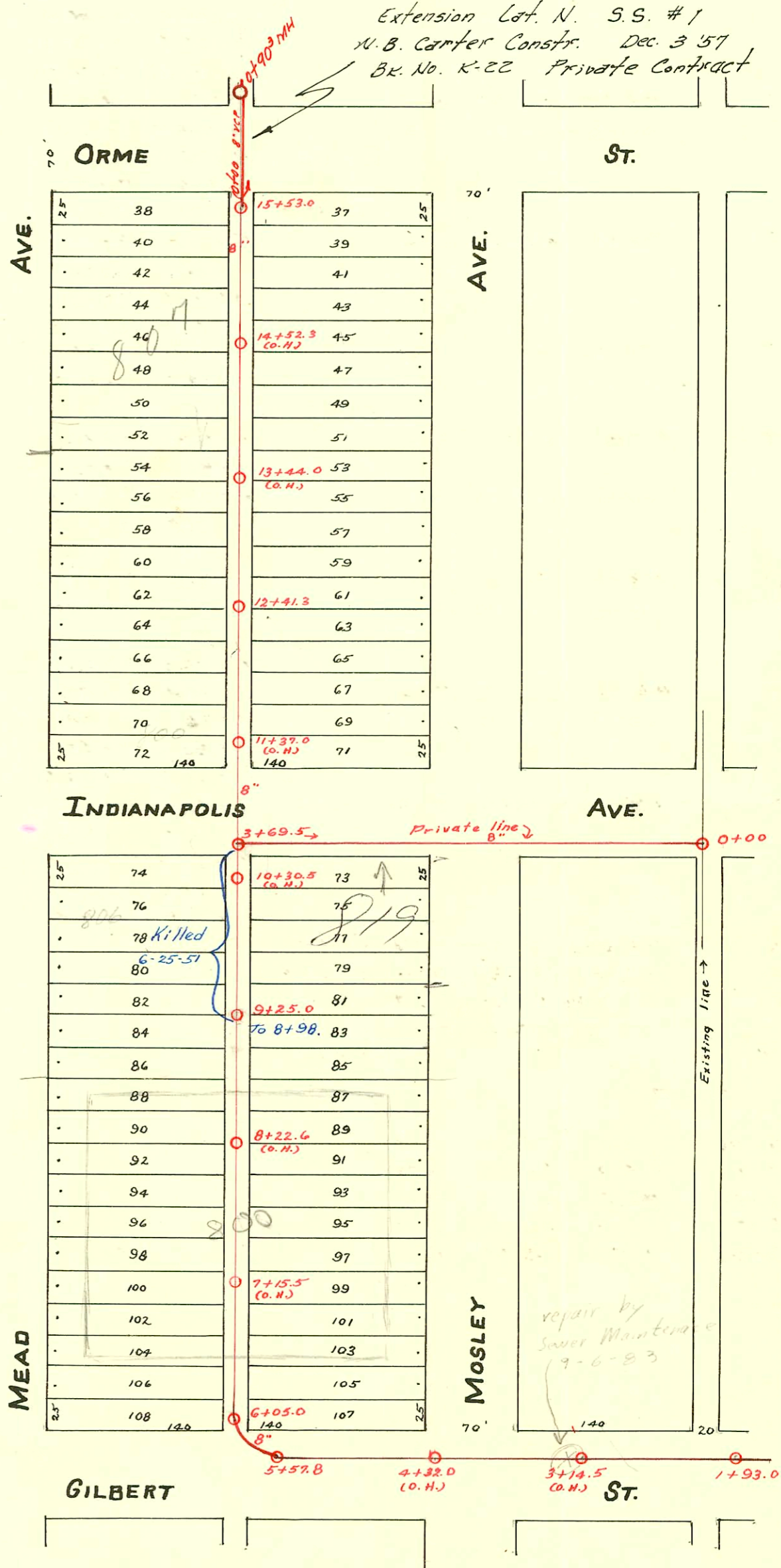
WEST SUB-MAIN "D" ON GILBERT ST. AND LAT. N.  
IN ALLEY BETWEEN MEAD AND MOSLEY AVE'S.  
S.S. No. 1 - 1889

Plat 9-56

TRAP AREA

Extension Lat. N. S.S. #1  
N.B. Carter Constr. Dec. 3 1957  
Bk. No. K-22 Private Contract

Easement # 214 - lot 46.



\* 45797 - 818 E Orme - Sewer 11-3-57  
Connected to street - north side M.H.  
End of Private Line.

CONSTRUCTION RECORD						SERVICE RECORD						
STATION	ELEVATION		Depth	MANHOLE	4-INCH "Y" BRANCHES		No. of Permit		House Number		DATE OF PERMITS	
	Ground	Grade			North West	South East	North West	South East	North West	South East	North West	South East
				15+53.0								
15	106.77	101.89	4.88	15+43.0 15+21.0 15+03.0 14+94.2 14+68.7 14+46.4	15+45.0 15+23.0 14+96.2 14+70.7 14+48.4			10812 13743	807 E.R. Canna		5-5-86 8-8-72	
14	106.51	101.57	4.94	14+20.2 13+94.5 13+70.6 13+46.5	14+22.2 13+96.5 13+72.6 13+48.5							
13	106.37	101.25	5.12	13+22.0 12+95.8 12+70.0 12+45.3	13+24.0 12+97.8 12+72.0 12+47.3			13713	Pop E. Indionapolis		12-28-60	
12	106.57	100.93	5.61	12+18.6 11+96.0 11+71.6 11+45.5	12+20.6 11+98.0 11+73.6 11+47.5			5312	816 E Indionapolis		9-12-37	
11	106.52	100.61	5.91	11+21.4 10+34.5	11+23.4 10+36.5			* ? # 1299	640 S. Meod	820 Indionapolis	6-2-55	1-22-47
10	107.48	100.29	7.19	10+10.4 9+87.0 9+61.0 9+37.0	10+12.4 9+89.0 9+63.0 9+39.0							
9	107.62	99.97	7.65	9+16.0 8+89.0 8+63.0 8+38.5	9+14.0 8+87.0 8+61.0 8+36.5							
8	108.24	99.65	8.59	8+14.0 7+86.0 7+62.0 7+36.0	8+12.0 7+84.0 7+60.0 7+34.0							
7	108.71	99.33	9.38	7+13.7 6+87.0 6+62.7 6+39.0 6+12.5	7+11.7 6+85.0 6+60.7 6+37.0 6+10.5							
6	108.60	99.03	9.57	6+05.0								
5	108.48	99.98	9.50	5+57.8								
4	108.24	98.60	9.64									
3	108.06	98.36	9.70									
1				1+93.0								
Private Line	0+00	105.4	98.58	6.82								
	1+00	106.2	98.68	7.52								
	2+00	108.5	98.78	9.72								
	3+00	105.7	98.88	6.82								
	3+69.5	105.9	98.96	6.94								
				BL-M-12								
EXTENSION	Lat. N.	S.S. NO. 1										
0+00	107.2	102.30	4.9	Existing MH								
	108.6	102.66	5.9	0+90.3 8" stub N.				* 5797	818 E Canna		12-3-57	

Killed 6-25-57

No FMP TURNED IN

# 1499 - Top 800 E. Gilbert - 2-2-54 - Rex Robertson  
 # 6514 - Top 819 E. Indianapolis - 9-20-55 - Moore Robertson  
 # 6824 - Top 819 E. Indianapolis - 10-31-55 - Moore Robertson  
 B 2551 - Top 800 E. Indianapolis - 12-23-60 - Robert M. F. Elson (12+64)