

EAST SUB-MAIN "D" ON KELLOGG ST. AND LAT. NORTH  
LAT. S. FROM EAST SUB-MAIN "D" ON WATERMAN ST.  
S.S. No. 1-1889.

See page no. 345 for  
sewer locations at intersection  
of Waterman & Washington.

Plat 9-54

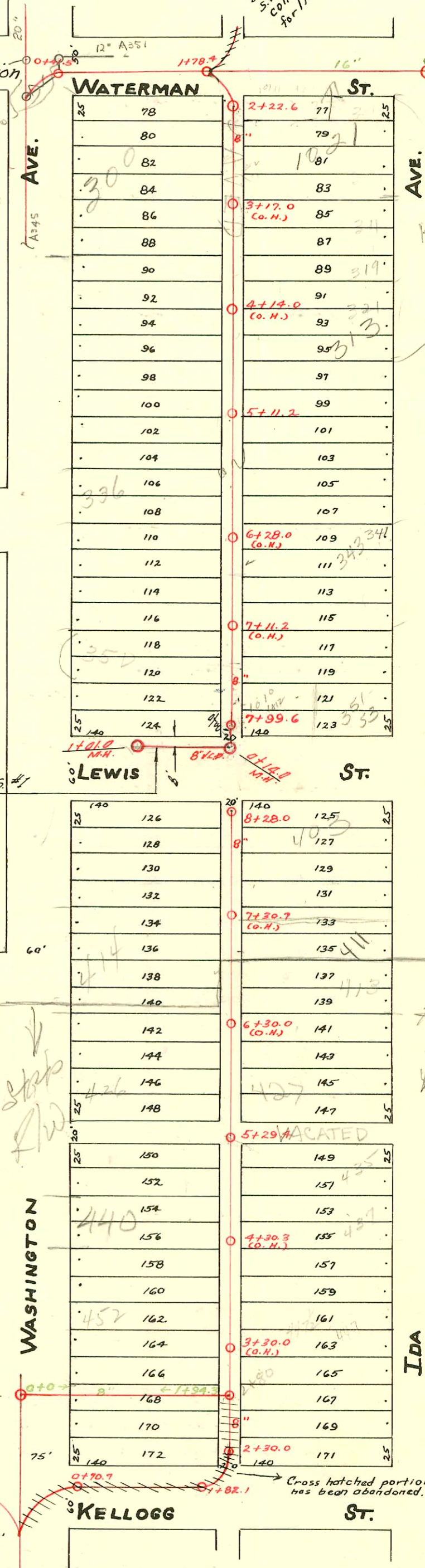
**TRAP AREA**

Branch N. Killed when  
S.S. 420 built. Line  
constructed on N.S. Waterman  
for line from N.

New line  
from this N.M. East.  
P. 453  
3+88.5

Known as  
313  
Ida

EAST OF LAT. 5 SUB. D S.S. #1  
PRIVATE CONTRACT



State  
R/W

Stop  
R/W

IDA

Cross hatched portion of sewer  
has been abandoned.

- # 2039 - 42<sup>nd</sup> Ida 12-8-80 Al Henning
- # 24987-32290-353 S Ida - Repair - 426' N of Mt in Alley (or 7+57)
- # 19360-7 - 4/1/91 313 S Ida n/c Bette (top 5+17.2)

