

WEST SUB-MAIN "D" ON LEWIS ST AND LAT'S N. & S. ON MOSLEY
S.S. No. 2 - 1889

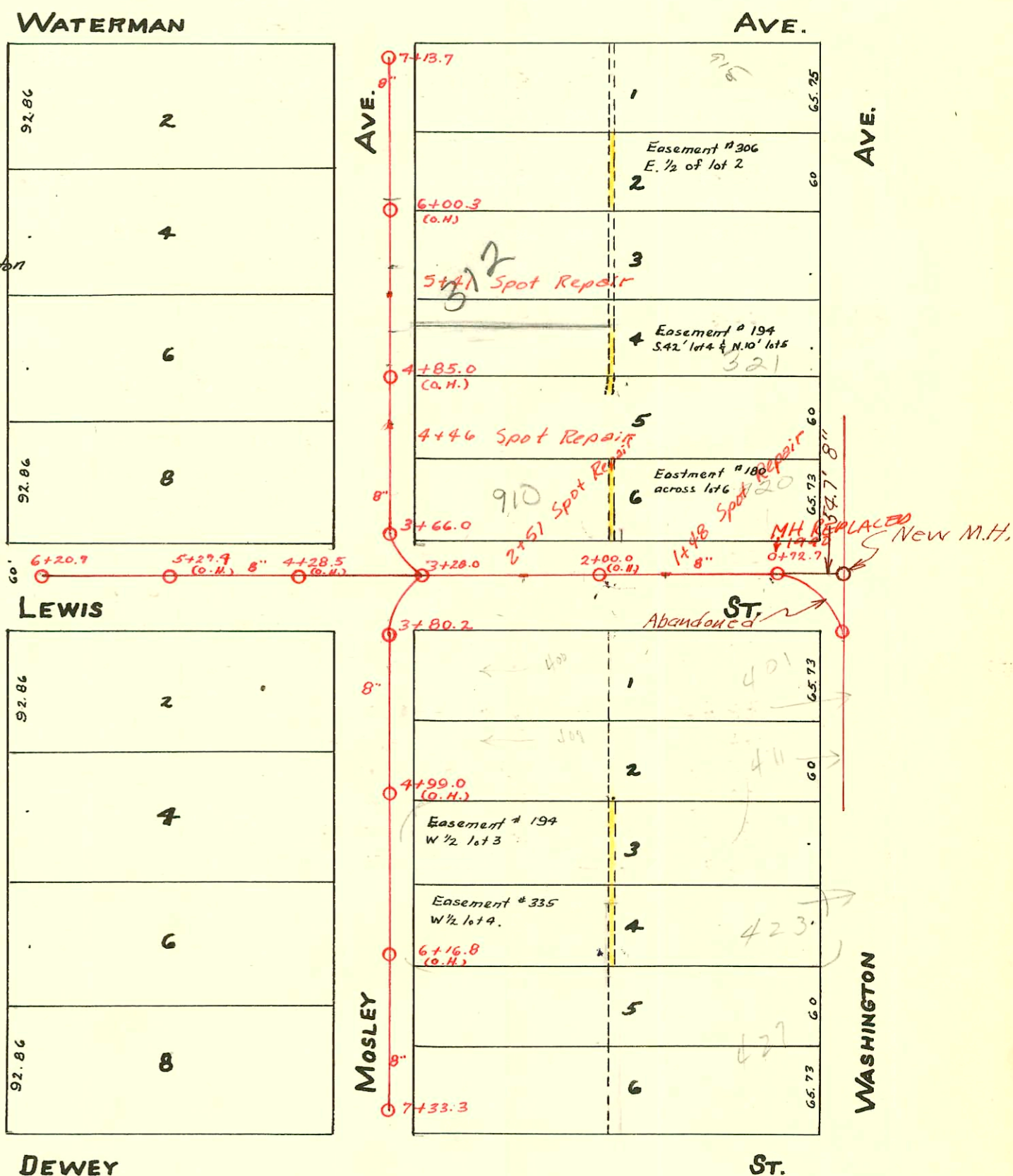
Plat 9-53

1" = 100

TRAP AREA

Note
check with system
planning on any
sewer conn or repair
10/18/99
BZ

San. Sewers #1 & #20 Rehabilitation
betw Douglas & Harry from Big Ark to Washington
468-76-2+5-816+2-000-000-001 Phase II
Built By Insituform Plains
Booked 2-9-89 from Plan.



CONSTRUCTION RECORD						SERVICE RECORD						
STATION	ELEVATION		Depth	MANHOLE	4-INCH "Y" BRANCHES		No. of Permit		House Number		DATE OF PERMITS	
	Ground	Grade			North West	South East	North West	South East	North West	South East	North West	South East
				7+13.7								
7	110.01	104.76	5.25		7+10.0	7+12.0						
					6+88.0	6+90.0						
					6+64.0	6+66.0						
					6+38.0	6+40.0						
					6+14.3	6+16.3	#1901		S.W. corner Mosley & Waterman		10-13-39	
6	109.86	103.96	5.90		5+88.0	5+90.0						
					5+62.5	5+64.5	#735		312 S. Mosley		9-29-47	9-9-47
					5+39.0	5+41.0						
5	109.19	103.16	6.03		5+15.0	5+17.0	#364		320 S. Mosley		6-30-13	8-25-58
					4+89.2	4+91.2						
					4+65.3	4+67.3						
					4+39.5	4+41.5						
4	108.95	102.36	6.59		4+14.2	4+16.2						
					3+89.7	3+91.7						
					3+69.6	3+71.6	#6135		831 E. Waterman		8-24-55	
3	108.84	102.08	6.76	3+66.0								
				7+33.3								
7	108.40	103.61	4.79		7+23.0	7+21.0	#6136		831 E. Waterman		8-24-55	
					6+97.7	6+95.7						
					6+71.7	6+69.7						
					6+47.3	6+45.3						
					6+21.2	6+19.2						
6	108.47	103.11	5.36		5+97.2	5+95.2						
					5+73.0	5+71.0						
					5+47.5	5+45.5						
5	108.28	102.61	5.67		5+23.4	5+21.4						
					4+97.4	4+95.4						
					4+71.4	4+69.4						
					4+47.5	4+45.5						
4	108.34	102.11	6.23		4+23.8	4+21.8						
					3+99.7	3+97.7						
					3+86.0	3+84.0						
3	108.32	102.02	6.30	3+80.2								
6	108.50	103.11	5.39	6+20.7								
5	108.49	102.61	5.88	5+27.4 (O.H.)								
4	108.63	102.11	6.52	4+28.5 (O.H.)								
3	108.87	101.61	7.26	3+28.0								
2	109.15	101.11	8.04	2+00.0 (O.H.)	2412.0							
0	109.20	100.46	8.74	0+72.7								
							M.H. 96-6427 C15479		910 E. Lewis		4-29-66	
							M.H. 24 C15481		920 E. Lewis (addr)		9-19-67	
									420 E. Lewis (addr)		9-19-67	

99-01530 12-30-99 312 S. Mosley (wheeler Harry Paint & Body Shop) - 4" SCH 40 at 6+14.0

#1741 - 326 S. Mosley - 11-25-23
 #273 - 4-10-20
 #1026 - 7-12-23
 451 S. Washington - Used old connection - 7-5-50 - Davidson Pibq. Co.
 Tap - 306 S. Mosley - 10-12-50 - Cowart Pibq. Co.
 920 E. Lewis - 4-21-52 - Dermody Pibq. Co. 6 on B wye.