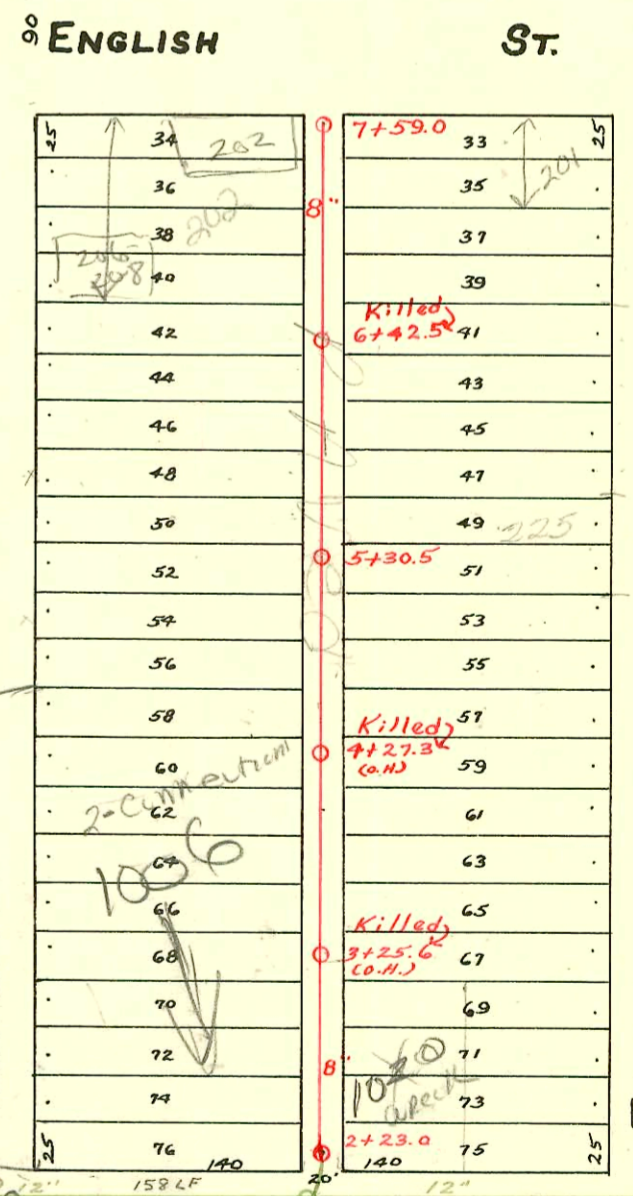
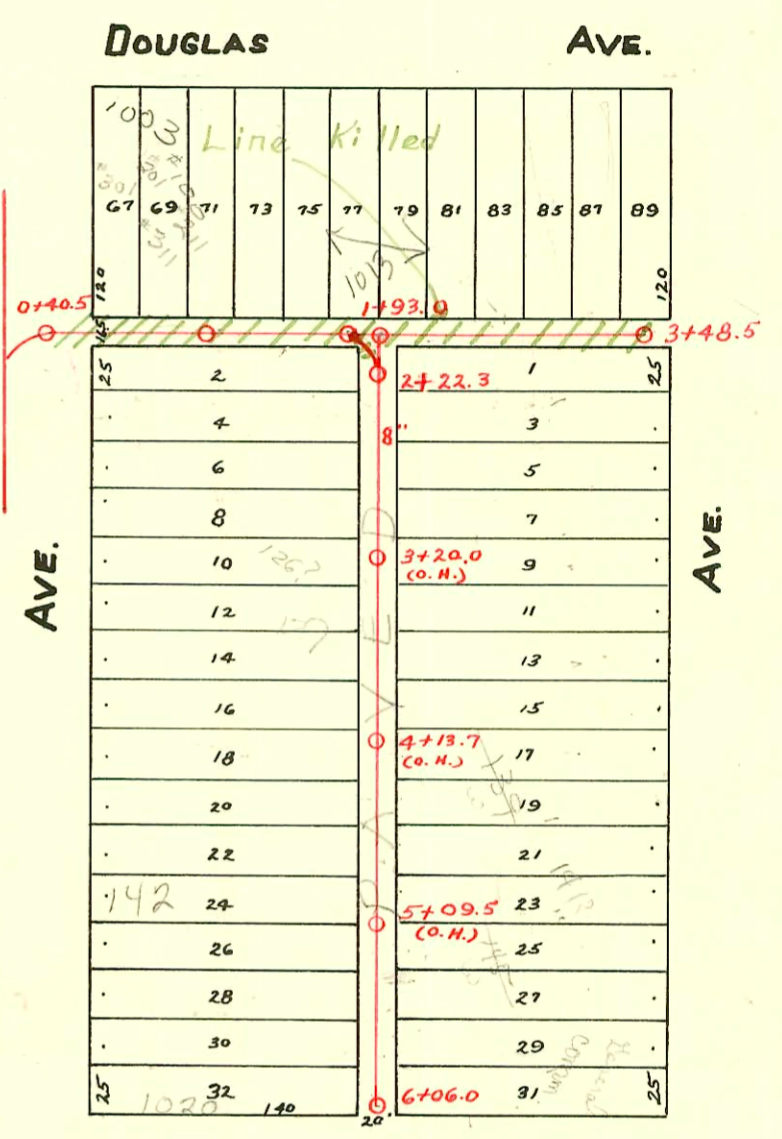


EAST SUB-MAIN "D" ON WATERMAN ST. AND LAT. N. - EAST SUB-MAIN "D" IN ALLEY SOUTH OF DOUGLAS AVE. AND LATERAL SOUTH. S.S. No. 1 - 1889

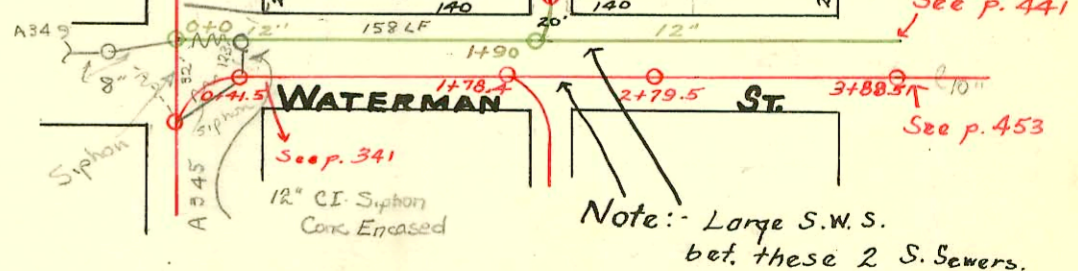
Plat 9-54

TRAP AREA

See B-208 for sewer location in alley east of Washington.



\* See page no. 345 for sewer location at intersection of Washington & Waterman.



CONSTRUCTION RECORD

SERVICE RECORD

| STATION | ELEVATION |        | Depth | MANHOLE | 4-INCH "Y" BRANCHES |            | No. of Permit |            | House Number |            | DATE OF PERMITS |            |
|---------|-----------|--------|-------|---------|---------------------|------------|---------------|------------|--------------|------------|-----------------|------------|
|         | Ground    | Grade  |       |         | North West          | South East | North West    | South East | North West   | South East | North West      | South East |
| 6       |           |        |       | 6+06    |                     |            |               |            |              |            |                 |            |
| 5+96    | 107.36    | 103.11 | 4.25  |         | 5+85.4              | 5+83.4     | #43           |            | 1004 E.      | 151<br>Ida |                 | 1-23-20    |
|         |           |        |       |         | 5+61.5              | 5+59.5     | #1151         | #2922      | English      | Ida        | 10-29-28        | 12-4-40    |
|         |           |        |       |         | 5+38.0              | 5+36.0     | 17126         | #847       | English      | Ida        | 10-14-86        | 4-16-19    |
| 5       |           |        |       |         | 5+13.5              | 5+11.5     | #767          | #478       | Ida          | Ida        | 8-23-21         | 11-26-02   |
| 4+96    | 108.01    | 102.86 | 5.15  |         | 4+90.2              | 4+88.2     | #80           |            | Ida          | Ida        |                 | 5-1-06     |
|         |           |        |       |         | 4+66.0              | 4+64.0     | #141          |            | Ida          | Ida        |                 | 2-21-52    |
|         |           |        |       |         | 4+42.7              | 4+40.7     | #132          |            | 140 S.       |            |                 |            |
| 4       |           |        |       |         | 4+18.5              | 4+16.5     | #1525         | #425       | Washington   | Ida        | 5-22-46         | 8-20-14    |
| 3+96    | 108.73    | 102.61 | 6.12  |         | 3+94.5              | 3+92.5     | #405          |            | Washington   | Ida        | 11-15-48        | 10-10-16   |
|         |           |        |       |         | 3+70.5              | 3+68.5     | #284          | #573       | Ida          | Ida        | 6-12-80         | 5-29-80    |
|         |           |        |       |         | 3+46.4              | 3+44.4     | #2307         | #2307      | Ida          | Ida        | 4-14-21         | 9-17-18    |
|         |           |        |       |         | 3+24.3              | 3+22.3     | #382          | #254       | Ida          | Ida        | 5-6-10          | 3-19-49    |
| 3       |           |        |       |         | 3+00.2              |            |               |            |              |            |                 | 4-30-10    |
| 2+96    | 109.90    | 102.36 | 7.54  |         | 2+98.2              | 2+98.2     | #1239         |            | 122 S.       |            | 10-18-48        |            |
|         |           |        |       |         | 2+78.5              | 2+76.5     | #749          |            | Washington   |            | 4-9-24          |            |
|         |           |        |       |         | 2+53.0              | 2+53.0     | #2311         | #315       |              | Ida        |                 | 9-27-45    |
| 2       | 108.34    | 102.16 | 6.18  | 2+22.3  | 2+30.0              | 2+28.0     |               |            |              |            |                 | 10-17-01   |
|         |           |        |       |         | 3+48.5              |            |               |            |              |            |                 |            |
| 3       | 108.82    | 103.01 | 5.81  |         | 3+23.0              |            |               |            |              |            |                 |            |
|         |           |        |       |         | 2+98.5              |            |               |            |              |            |                 |            |
|         |           |        |       |         | 2+74.4              |            |               |            |              |            |                 |            |
|         |           |        |       |         | 2+51.4              |            | #509          |            | 1115 E.      |            | 5-16-22         |            |
|         |           |        |       |         | 2+26.8              | 2+49.4     |               |            | Douglas      |            |                 |            |
| 2       |           |        |       |         | 2+02.8              |            | #309          |            | 1017 E.      |            | 6-27-12         |            |
|         |           |        |       |         | 1+74.7              |            |               |            |              |            |                 |            |
|         |           |        |       |         | 1+50.7              | 1+55.5     | #179          |            | No           | 114 S.     |                 | 3-31-10    |
|         |           |        |       |         | 1+26.6              |            | #343          |            | Record       |            | 6-10-18         |            |
| 1       | 108.89    | 101.87 | 7.02  |         | 1+07.2              |            |               |            |              |            |                 |            |
|         |           |        |       |         | 0+86.0              |            | #379          |            | No           | Record     |                 | 6-25-10    |
| 0       | 108.51    | 101.72 | 6.79  | 0+40.5  | 0+63.8              |            |               |            |              |            |                 |            |
|         |           |        |       |         | 7+52.0              | 7+54.0     | #1214         | #5949      | 202 S.       | 201 E.     | 12-31-46        | 6-1-82     |
|         |           |        |       |         | 7+28.4              | 7+30.4     |               | #1617      | Washington   | Ida        |                 | 6-23-44    |
| 7       | 107.59    | 103.00 | 4.59  |         | 7+04.5              | 7+06.5     |               | 10522      |              |            |                 | 3-30-84    |
|         |           |        |       |         | 6+80.6              | 6+82.6     | #275          | #234       |              |            | 5-13-10         | 3-25-22    |
|         |           |        |       |         | 6+56.7              | 6+58.7     | #18           |            |              |            | 2-27-06         |            |
|         |           |        |       |         | 6+32.9              | 6+34.9     | #91           |            |              |            | 5-8-06          |            |
| 6       | 108.61    | 102.70 | 5.91  |         | 6+09.0              | 6+11.0     |               |            |              |            |                 |            |
|         |           |        |       |         | 5+84.7              | 5+86.7     |               |            |              |            |                 |            |
|         |           |        |       |         | 5+60.8              | 5+62.8     | #410          | 10180      | 200 S.       | 201 E.     | 3-23-23         | 2-9-84     |
|         |           |        |       |         | 5+36.5              | 5+38.5     | #17           |            | Washington   | Ida        | 2-16-06         |            |
| 5       | 107.21    | 102.40 | 4.81  | 5+30.5  | 5+12.5              | 5+14.5     | #10           | #52        |              |            | 2-19-06         | 2-24-09    |
|         |           |        |       |         | 4+90.0              | 4+92.0     | #11           |            |              |            | 2-19-06         |            |
|         |           |        |       |         | 4+66.0              | 4+68.0     |               |            |              |            |                 | 5-6-09     |
|         |           |        |       |         | 4+42.0              | 4+44.0     |               |            |              |            |                 | 1-12-65    |
| 4       | 106.89    | 102.10 | 4.79  |         | 4+17.6              | 4+19.6     |               | #843       |              |            |                 | 9-14-21    |
|         |           |        |       |         | 3+94.0              | 3+96.0     |               |            |              |            |                 |            |
|         |           |        |       |         | 3+68.2              | 3+70.2     |               |            |              |            |                 |            |
|         |           |        |       |         | 3+46.2              | 3+48.2     |               |            |              |            |                 |            |
|         |           |        |       |         | 3+22.0              | 3+24.0     | #200          | #449       |              | 247        | 3-20-20         | 7-21-47    |
| 3       | 106.72    | 101.80 | 4.92  |         | 3+00.2              |            |               |            |              | Ida        |                 |            |
|         |           |        |       |         | 2+98.2              |            |               |            |              |            |                 |            |
|         |           |        |       |         | 2+74.5              | 2+76.5     |               | #83        |              | 251        |                 | 5-9-21     |
|         |           |        |       |         | 2+50.6              | 2+52.6     | #189          | #271       | 1016 E.      | 1018 E.    | 8-21-08         | 3-25-25    |
| 2       | 106.85    | 101.57 | 5.28  | 2+23.0  | 2+26.2              | 2+28.2     |               |            |              |            |                 |            |
| 1       | 107.10    | 100.72 | 6.38  | 1+90.0  |                     |            |               |            |              |            |                 |            |
| 0       | 107.43    | 100.62 | 6.81  | 0+0     |                     |            |               |            |              |            |                 |            |

Dead line  
see page 2  
18"

Do not use to obtain "Y" measurements.

17125-1020 E. English - 10-14-86 - Robert Fox - (43' wop mt (543) and 1' inside prop. line)  
 97-10859-7 103-97 1006 E Waterman (remold) between the tap 56' S. of Mt 4" sch wopvc trap  
 66157-831-72-226 S. Washington - 8-21-78 (4140.5)  
 62870-4-6-77-1006 E. Waterman (4140.5) - Red all but lower 2' (wye opp 129' S. of Mt) 4" ABS 40-4" trap  
 62869-4-6-77-1006 E. Waterman (2195)  
 21655-230 S. Washington - Seal off - at Newburg 10-30-69  
 10100-123 Ida - Seal off - at Newburg 8-19-68  
 #1166 Tap - 9-9-22-142 S. Washington  
 #53 Tap - 150 S. Washington - 2-12-30 - H.J. Geile  
 #816 - Used old conn. - 1020 E. Waterman - 9-29-47 - Davidson Pibg.  
 #1886 - Used old conn. - 240 Ida - 1-6-49 - Frederick Pibg.  
 #4784 - 229 Ida - 6 on 8 wye - 5-16-55 - Reynolds Pibg.  
 #619 - Used old conn. - E.B. Brinnon - 4-24-56 - 24? Ida.  
 #3389 - Used old conn. - 220 S. Washington - Carl Brodie - 12-20-56  
 #16744 - 1017 E Douglas - Seal off - 3-8-63  
 #82344 - 225 Ida - Seal off - at Newburg - 11-18-64  
 94-3027-7 3-874 201 S. Ida (addition) - N.C.  
 4" PVC 40 - 4" City Tap - 104 ft South (6155) 4" trap installed  
 94-9943-7-4/27/91 - 1013 E Douglas - Replns - 6" PVC 40 - Replaced 6" trap  
 Replaced 4' section of line to point 7 ft from main - 1/2" p.f.

A