

MAIN "D" FROM SECOND ST. TO CENTRAL AVE.
S.S. No. 1 - 1889

Scale 1"=100'

Plat 9-50

TRAP AREA

Easement #275 com. 661' W. & 385' S. of N.E. cor. of N.W. 1/4, Sec. 21, S. 50', E. 165.25', N. 50', W 165 1/4' to beg.

Sewer Rehab & Mosley Relief Sewer
Dist 1 & 20, North of Douglas
468-80-990-80271-000-000-001
Built By Stannard Const.
Booked 8-7-85 from As Built

2003-03066-11/20/03-337 N Rock Island - Superior
Bldg out 8' tied to 8" clay going to main 4" sch 40, 17' twin co,
1 running trap (4-4.5V) 1-8x4 saddle, 14" ferro, 1-8" ferro

2003-02726 10/21/03 355 N Rock Island - Radsett
Riser = trap- 3.1' deep - 54.6' S of MH 102+89.8 (102+35.2)
2-6x4 wyes (directional clo) 6" sch 40 PVC, 1 running trap (4-6"
45 E 115) 6" sch 40 PVC - 16" predco

2002-00701 3/14/02 331 N Rock Island - McCullough
63' S of MH

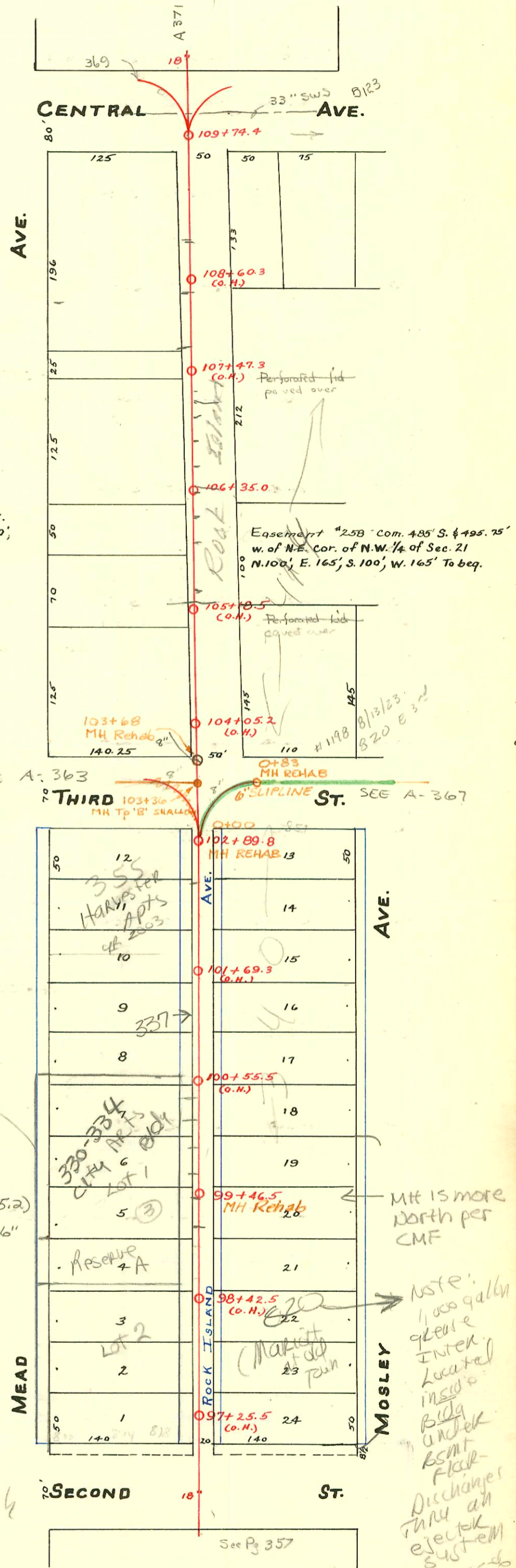
2002-00703 3/14/02 333 N Rock Island - McCullough
S/O OK 69' N of MH 99+46.5 (100+15.5)

2002-00702 3/14/02 325 N Rock Island - McCullough
S/O OK 6' S of MH

2003-03101 11/25/03 330-334 N Mead - Boardman

2003-03102 11/25/03 330-337 N Mead (Grease Inter) Boardman 4" PVC 1000 gal
grease interceptor, 4" twin co (inlet + outlet)

2003-03104 11/25/03 330-334 N Mead - (Sewer) Boardman 4" PVC 4" city tap 66' S of MH
99+46.5 (98+79.9) 14" fall, shallow, 4" trap installed, 1V2, 2H45, 4" twin co @ bldg
Tap by city 4" Predco w/ epoxy, paved alley cut



Proposed to
add twin square
Addition

MH is more
North per
CMF

Note:
1000 gal
grease
interceptor
located
inside
Bldg
under
BSMT
floor
Discharge
trap an
ejector
system
1-25-86
B2

SEE A-363

SEE A-367

6" SLOPLINE

0+83 MH REHAB

0+00

102+89.8 MH REHAB 13

101+69.3 (O.H.)

100+55.5 (O.H.)

99+46.5 MH Rehab 26

98+42.5 (O.H.)

97+25.5 (O.H.)

103+36

MH TO 'B' SHALLOW

102+89.8

101+69.3

100+55.5

99+46.5

98+42.5

97+25.5

103+36

MH TO 'B' SHALLOW

102+89.8

101+69.3

100+55.5

99+46.5

98+42.5

97+25.5

103+36

MH TO 'B' SHALLOW

102+89.8

101+69.3

100+55.5

99+46.5

98+42.5

97+25.5

103+36

MH TO 'B' SHALLOW

102+89.8

101+69.3

100+55.5

99+46.5

98+42.5

97+25.5

103+36

MH TO 'B' SHALLOW

102+89.8

101+69.3

100+55.5

99+46.5

98+42.5

97+25.5

103+36

MH TO 'B' SHALLOW

102+89.8

101+69.3

100+55.5

99+46.5

98+42.5

97+25.5

103+36

MH TO 'B' SHALLOW

102+89.8

101+69.3

100+55.5

99+46.5

98+42.5

97+25.5

103+36

MH TO 'B' SHALLOW

102+89.8

101+69.3

100+55.5

99+46.5

98+42.5

97+25.5

103+36

MH TO 'B' SHALLOW

102+89.8

101+69.3

100+55.5

99+46.5

98+42.5

97+25.5

103+36

MH TO 'B' SHALLOW

102+89.8

101+69.3

100+55.5

99+46.5

98+42.5

97+25.5

103+36

MH TO 'B' SHALLOW

102+89.8

101+69.3

100+55.5

99+46.5

98+42.5

97+25.5

103+36

MH TO 'B' SHALLOW

102+89.8

101+69.3

100+55.5

99+46.5

98+42.5

97+25.5

103+36

MH TO 'B' SHALLOW

102+89.8

101+69.3

100+55.5

99+46.5

98+42.5

97+25.5

103+36

MH TO 'B' SHALLOW

102+89.8

101+69.3

100+55.5

99+46.5

98+42.5

97+25.5

103+36

MH TO 'B' SHALLOW

102+89.8

101+69.3

100+55.5

99+46.5

98+42.5

97+25.5

103+36

MH TO 'B' SHALLOW

102+89.8

101+69.3

100+55.5

99+46.5

98+42.5

97+25.5

103+36

MH TO 'B' SHALLOW

102+89.8

101+69.3

100+55.5

99+46.5

98+42.5

97+25.5

103+36

MH TO 'B' SHALLOW

102+89.8

101+69.3

100+55.5

99+46.5

98+42.5

97+25.5

103+36

MH TO 'B' SHALLOW

102+89.8

101+69.3

100+55.5

99+46.5

98+42.5

97+25.5

103+36

MH TO 'B' SHALLOW

102+89.8

101+69.3

100+55.5

99+46.5

98+42.5

97+25.5

103+36

MH TO 'B' SHALLOW

102+89.8

101+69.3

100+55.5

99+46.5

98+42.5

97+25.5

103+36

MH TO 'B' SHALLOW

102+89.8

101+69.3

100+55.5

99+46.5

98+42.5

97+25.5

103+36

MH TO 'B' SHALLOW

102+89.8

101+69.3

100+55.5

99+46.5

98+42.5

97+25.5

103+36

MH TO 'B' SHALLOW

102+89.8

101+69.3

100+55.5

99+46.5

98+42.5

97+25.5

103+36

MH TO 'B' SHALLOW

102+89.8

101+69.3

100+55.5

99+46.5

98+42.5

97+25.5

103+36

MH TO 'B' SHALLOW

102+89.8

101+69.3

100+55.5

99+46.5

98+42.5

97+25.5

103+36

MH TO 'B' SHALLOW

102+89.8

101+69.3

100+55.5

99+46.5

98+42.5

97+25.5

103+36

MH TO 'B' SHALLOW

102+89.8

101+69

CONSTRUCTION RECORD						SERVICE RECORD						
STATION	ELEVATION		Depth	MANHOLE	4-INCH "Y" BRANCHES		No. of Permit		House Number		DATE OF PERMITS	
	Ground	Grade			North West	South East	North West	South East	North West	South East	North West	South East
	111.31	104.92	6.39	109+74.4								
109	111.10	104.82	6.28		109+37.0	109+35.0	#747		825 E. Central		9-6-27	
					109+14.4	109+12.4	#1192		813 Central		8-29-19	
					108+91.5	108+89.5						
					108+66.5	108+64.5	#26		805 Central		3-20-05	
					108+41.8	108+39.8	#1104		719-21 E. Central		12-15-27	
108	110.85	104.72	6.13		108+17.0	108+15.0	#166		445 N. Rock Island		3-14-29	
					107+91.8	107+89.8						
					107+69.0	107+67.0	#540		433 N. Rock Island		5-20-25	
					107+42.5	107+40.5	#104		434 N. Rock Island		3-4-29	
107	111.51	104.62	6.89		107+17.6	107+15.6						
					106+92.7	106+90.7	#400		430 N. Rock Island		4-19-28	
					106+68.3	106+66.3						
					106+42.8	106+40.8						
				106+35.0								
106	110.93	104.52	6.41		106+13.4	106+11.4	#216		427 N. Rock Island		10-2-08	
					105+88.6	105+86.6						
					105+64.2	105+62.2						
					105+39.3	105+37.3	#955		418 N. Rock Island		9-17-48	
105	111.05	104.42	6.63		105+14.7	105+12.7						
					104+90.0	104+88.0						
					104+65.4	104+63.4	#2749		416 N. Rock Island		2-28-46	
					104+41.0	104+39.0	#1198		320 Central		8-13-23	
					104+15.8	104+13.8						
104	110.41	104.32	6.09		103+90.9	103+88.9						
103	109.99	104.22	5.77		103+65.6	103+63.6	#1081		N.W. Cor. 3rd & R.I.		8-16-29	
				102+89.8								
					102+73.0	102+71.0						
					102+48.4	102+46.4	#579		351 N. Rock Island		10-24-10	
					102+23.7	102+21.7						
102	109.66	104.12	5.54		101+96.8	101+94.8	#1746		851 E. 3rd		7-29-24	
					101+74.0	101+72.0						
					101+55.3	101+53.3						
101	109.58	104.02	5.56		101+22.0	101+20.0	#1573		340 332 N. Rock Island		6-1-44	
					100+89.0	100+91.0						
					100+64.0	100+66.0						
					100+45.0	100+47.0						
100	109.96	103.92	6.04		100+15.5	100+17.5	#259		333 N. monkey		4-6-20	
					99+90.5	99+92.5	#456		335 N. Rock Island		9-16-37	
					99+65.0	99+67.0						
				99+46.5								
99	110.19	103.82	6.37		99+40.0	99+42.0	#310		321 N. Rock Island	see next	3-2-23	
					99+15.0	99+17.0						
					98+92.5	98+94.5						
					98+64.5	98+66.5	#1457		323 N. Rock Island		3-20-44	
					98+39.0	98+41.0	#117		318 N. mead		6-9-93	
98	110.10	103.72	6.38		98+14.5	98+16.5						
					97+90.0	97+92.0						
					97+65.5	97+67.5	#895		802 E. 2nd		9-24-30	
97	110.45	103.62	6.83	97+25.5 (O.H.)	97+40.5	97+42.5	#546		315 305 305 N. Rock Island		8-30-09	7-16-18

N/C 2002-02037 - 300 N Head Bldg A - Boardman - 7/26/02 - 1-4" sch 40 twin co, 1 V22, Running trap (4-45° E115) New Procco Saddle 138' N of MH 99+46.5 (100+84.5)

GI 2002-02004 - 300 N Head Bldg A - Boardman - 8/6/02 - 1000 Gal grease interceptor, 3 twin co, 1 Div co, 2H45, 2 WYES (1 for Sanitary swr) 4" SCH 40 PVC

SWR 2001-01287 5-24-01 414 N Rock Island - Don Vajha: 4" SCH 40 - CITY TAP - 4" Procco 34'S of MH 106+35 (106+31) concrete alley cut, trap installed, 1 twin co, 1H45, 2H45

Seal off C16453 - J.C. Severa - 307 N Rock Island 10-23-69 - (97+52.5) 307+309 conn. with 814 E. 2nd conn. with bldg. on the north

#1072 - Top - 811 E. 3rd - 12-5-27
 #743 - Top - 426 N. Rock Island - 3-14-38 - Simmons P1b9
 13294 Top 823 Central by Habitation 9-22-60 (108+11.4)
 15153 - Top - 711 E 3rd - Justice City - 2-5-62 (102+51.8)