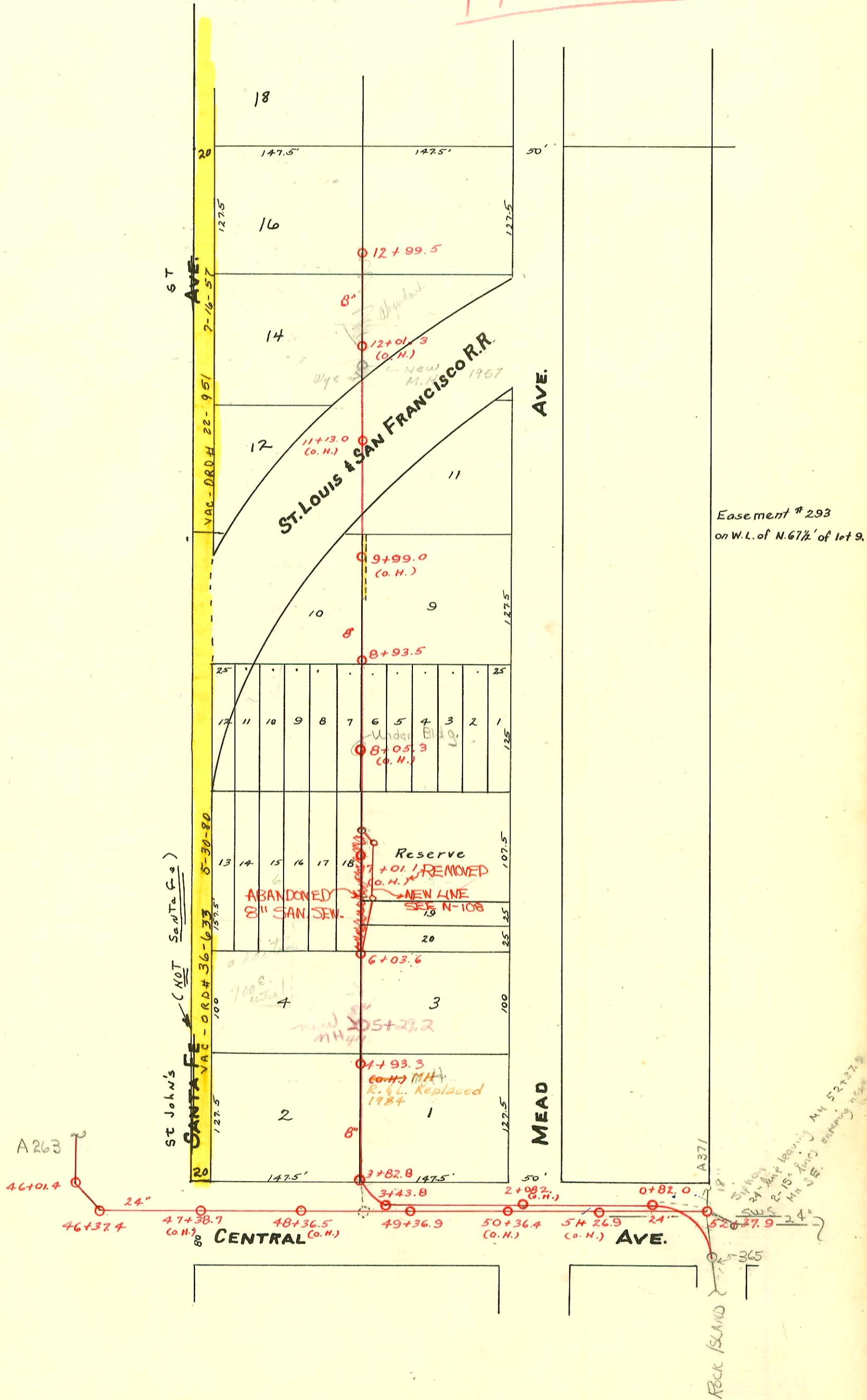


WEST SUB-MAIN "D" ON CENTRAL AVE. AND LAT. N.
S.S. No. 1 - 1889

Plat 9-47

TRAP AREA



CONSTRUCTION RECORD							SERVICE RECORD					
STATION	ELEVATION		Depth	MANHOLE	4-INCH "Y" BRANCHES		No. of Permit		House Number		DATE OF PERMITS	
	Ground	Grade			North West	South East	North West	South East	North West	South East	North West	South East
	113.12	108.67	4.45	12+99.5							12-5-98	
					12+98.0	12+96.0					9-15-00	
					12+77.8	12+75.8						
					12+53.5	12+51.5						
					12+29.8	12+27.8						
					12+05.7	12+03.7						
12	113.37	108.42	4.95									
					11+81.9	11+79.9						
					11+57.8	11+55.8						
					11+33.6	11+31.6						
11	114.62	108.17	6.45									
					10+66.0	10+64.0						
					10+41.0	10+39.0						
10	112.70	107.92	4.78									
					10+15.2	10+13.2						
					9+90.8	9+88.8						
					9+58.2	9+56.2	#1054		551 N. Mead		12-8-30	
					9+42.3	9+40.3						
9	112.70	107.67	5.03									
				8+93.5								
					8+90.4	8+88.4						
					8+67.6	8+65.6						
					8+42.5	8+40.5						
					8+17.5	8+15.5						
8	113.00	107.42	5.58									
					7+92.6	7+90.6						
					7+67.1	7+65.1						
					7+37.0	7+35.0						
					7+11.5	7+09.5	#2449	#2495	700 E. Central	700 E. Central	1-21-81	1-27-81
7	113.67	107.17	6.50									
					6+87.2	6+85.2						
					6+62.0	6+60.0						
					6+37.8	6+35.8						
					6+12.7	6+10.7	#428		524 N. Santa Fe		9-18-12	
6	113.62	106.92	6.70	6+03.6								
					5+88.0	5+86.0						
					5+64.4	5+62.4						
					5+38.6	5+37.6						
5	113.33	106.67	6.66									
					5+14.1	5+12.1	#374		720 E. Central		6-19-14	
					4+91.5	4+89.5						
					4+72.9	4+70.9	#474	#473	714 E. Central	718 E. Central	8-7-14	8-7-14
					4+46.0	4+44.0						
4					4+15.7	4+13.7						
					3+88.6	3+86.6						
	112.87	106.38	6.49	3+82.8								
	109.87	106.28	3.59	3+43.8								
3	111.87	106.17	5.70									
					3+05.3							
					2+78.3							
					2+52.0							
					2+25.6							
2	111.84	105.92	5.92									
					1+46.0		#2560		800 E. Central		8-7-40	
1					1+21.7							
					0+92.8		#2041		808 E. Central		12-15-39	
0	108.84	105.62	3.22	0+82.0								
46				46+01.4								
				46+37.4								
47				47+38.7 (O.H.)								
48				48+36.5 (O.H.)								
49				49+36.9								
50				50+36.4 (O.H.)								
51				50+26.9 (O.H.)								
52				52+37.9								

BK D Pg 91
200 Pg 263

#C9612 700 E. Central - Perry Bros. Pkg. 7-15-68 4" stub - near M.H. to be M.H. 5+29.2 - 4" stub N.W.
 #C9613 700 E. Central - Perry Bros. Pkg. 7-15-68 8" stub - near M.H. to be M.H. 5+29.2 - 8" stub W.

Top #126 - 4-28-36 - 700 E. Central - Simmons Pkg. Co.
 Top #354 - 700 E. Central - 7-3-46 - H.P. Dunaway
 Top #515 - 700 E. Central - 6-15-49 - H.P. Dunaway
 4834 701 E. Mead - 6-27-57 Ted Jones 6" stub N new end M.H.
 #24334 - 11-21-84 - 700 E. Central - Repair - MK Pkg - 4" ABS - serves truck wash and maint. Bldg tied into existing 4" private Line
 #24457 - 12-4-89 - 700 E. Central - Rep MK Pkg - (permit voided)