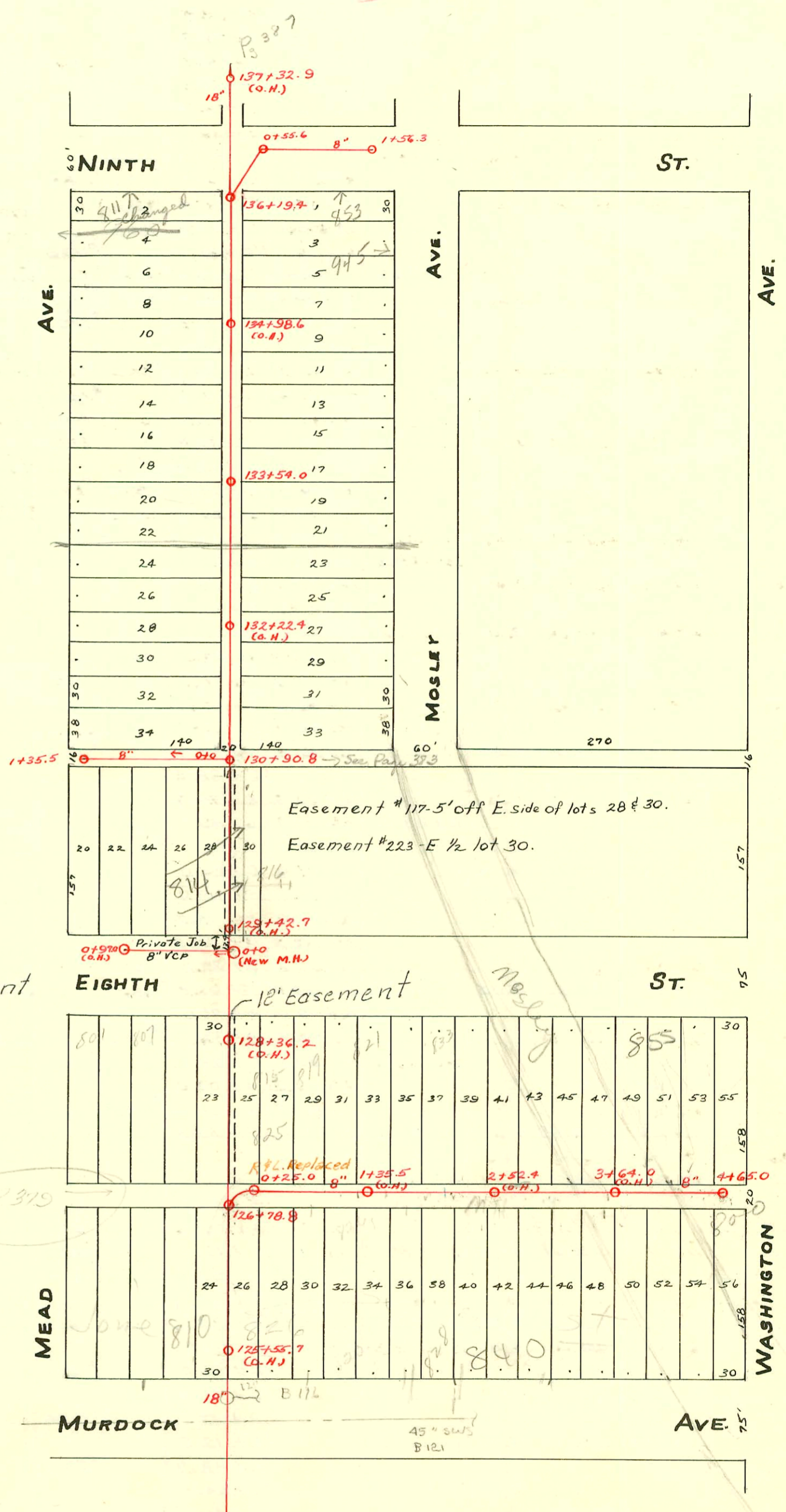


MAIN "D" FROM MURDOCK AVE. TO NINTH STREET
EAST SUB-MAIN "D" IN ALLEY NO. OF MURDOCK AVE.
S.S. No. 1- 1889

17100

Plat 9-47

TRAP AREA



Easement #121 on lot 25

Note:
Ord. No. 24-469
Vacates all the easement
across lot 25 8th St.
except the West 12'.

#24298-11889 - 826 E. MURDOCK - Ted Jones (Tied into 6" ABS private line that serves other units in Bldg)

91-21984-1-51319, 840 E MURDOCK - add 1 conn - Leon Shallop - (City top 20' of MH - 4" sch 40PC - Glease trap & cover)

A/C 2006-00000e-318 N Mosley - 47' west of MH, (1) twin clo, trap, (1) 45x8x4 saddle w/ epoxy - Padgett EX 3-8-00

CONSTRUCTION RECORD

SERVICE RECORD

STATION	ELEVATION		Depth	MANHOLE	4-INCH "Y" BRANCHES		No. of Permit		House Number		DATE OF PERMITS	
	Ground	Grade			North West	South East	North West	South East	North West	South East	North West	South East
				1+35.5								
1						1+28.5 1+04.5 0+79.5 0+54.3 0+29		#2281		804 E 8th St.		10-9-24
0						0+04		?				9-20-02
4	111.88	109.16	2.72	4+65.0	4+57.0 4+28.7 3+98.7 3+68.0 3+36.0 3+05.3	4+55.0 4+26.7 3+96.7 3+66.0 3+34.0 3+03.3		#1700 #267 #986 #317 #590	840 E. Murdock 857 E. 8th 855 E. 8th 847 E. 8th 843 E. 8th		12-11-22 8-18-65 11-12-08 9-9-25 10-4-79 4-20-26	10-27-19 10-27-19 10-4-79 9-9-18
3	112.28	108.75	3.53		2+74.8 2+44.7 1+82.8 1+54.0 1+23.5 0+93.5 0+62.7 0+31.5	2+72.8 2+42.7 1+81.8 1+52.0 1+21.5 0+91.5 0+60.7 0+29.5		#2344 #1701 #617 #2719 #112 #2718	835 E. 8th 829 E. 8th 821 E. 8th 819 E. 8th 815 E. 8th		6-1-18 6-8-25 11-10-77 12-16-24 6-17-63 10-12-25 12-16-24	10-17-24 12-11-22 1-10-68 8-12-12 1-6-23
2	112.31	108.50	3.81									
1	113.37	108.25	5.12									
0	113.04	108.06	4.98	0+25.0								
137	115.23	107.72	7.51	137+32.9 (O.H.)	137+18.8 136+88.4							
136	115.59	107.62	7.97	136+19.4	135+94.5 135+60.2 135+27.5 134+94.7 134+64.2 134+33.2	135+92.5 135+58.2 135+25.5 134+92.7 134+62.2 134+31.2		#283 #284	827 E. Ninth Johnson & Larimer		4-13-26 4-13-26	
135	115.10	107.52	7.58		134+02.5 133+71.5	134+00.5 133+69.5						
134	113.90	107.42	6.48	133+54.0	133+41.0 133+10.0 132+79.5 132+47.0	133+39.0 133+08.0 132+77.5 132+45.0						
133	113.00	107.32	5.68		132+16.4 131+81.7 131+49.4 131+13.0	132+14.4 131+79.7 131+47.4 131+11.0		#102 #654	925 N. Mosley 905 N. Mosley		2-1-24 9-12-46	
132	114.74	107.22	7.52		130+60.0 130+30.0 129+98.0 128+66.0 127+34.0	130+58.0 130+28.0 129+96.0 128+64.0 127+32.0		#3885	814 E. Eighth		2-21-57	
131	113.21	107.12	6.09	130+90.8	126+78.8							
130	114.22	107.02	7.20		126+36.0 125+55.7 (O.H.)	126+34.0 125+53.7 (O.H.)		#1390	816 E. Murdock		10-20-22	
129	113.84	106.92	6.92									
128	115.30	106.82	8.48									
127	113.22	106.72	6.50									
126	113.67	106.62	7.05									
125	112.66	106.52	6.15									
Ext. Sub-main D.S.S. #1, Jan 9, 1955. BK. K-34- Private job Joe McDonald.	0+0	113.0	108.31	4.7	0+0	0+93		#3522	910 N. Mead			2-17-55

Seoff - 071213-840 E. Murdock - 4-12-77 (3726)

Tap - 833 W. 8th Johnson - Ripst + Co.
 Tap - 848 E. Murdock - #819 - 8-26-30 - Wilson Pibg Co.
 #1019 - Private line - 907 N. Mosley - 8-8-29 - J. M. Connaughton
 #1020 - Private line - 909 N. Mosley - 8-8-29 - J. M. Connaughton
 #926 - Tap - 901 N. Mosley - 11-12-46 - C. Frank McCoy
 #1339 - Tap - 850 N. Mosley - 8-23-49 - A. E. Vaughn - 36932 - Judson
 #1922 - Tap - 804 E. 8th - 8-12-50 - Simmons Pibg Co.
 #4638 - Tap - 820 E. Murdock - 5-12-51 - H. H. Crea Kmore
 #5774 - Tap - 925 N. Mosley - 9-11-51 - Cowan Pibg - conn. at 132+79.8
 #3522 - 910 N. Mead - Joe McDonald - 2-17-55 - Private line conn.

3885 - Sept - 814 E. 8th - Reynolds - 3-23-57
 # B-558 - 811 N. Mosley - Darby City - 12-17-63 - Tap (3+14)
 # B-2348 - 811 E. 8th - Al Herming - 11-20-64 (136+154) (Box drain)
 820 E. Murdock - Fredrick Pibg - 10-7-64 - Tap (126+42.2)
 # B-5462 - 925 E. 8th - Bradford Jarvis - 4-18-66 (127+61.5) (addition)