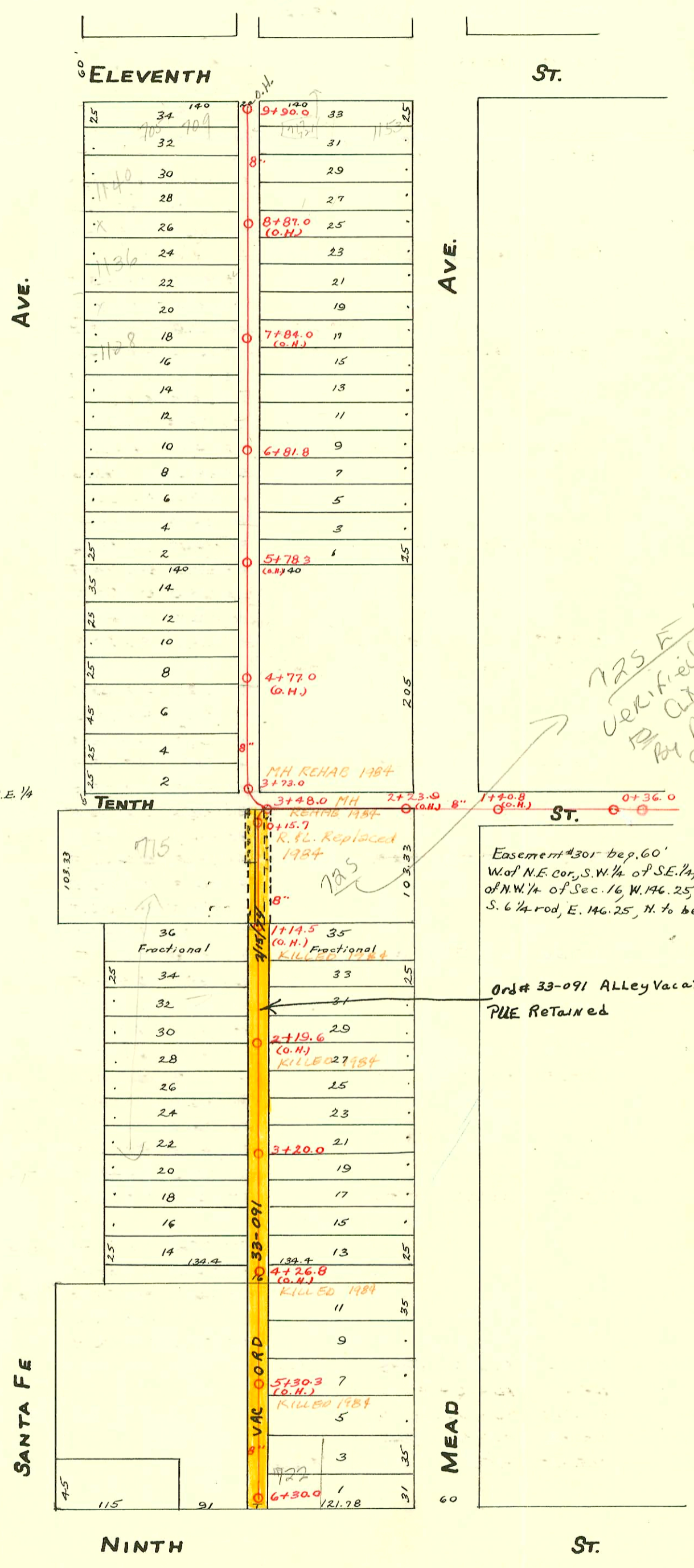


WEST SUB-MAIN "D" ON TENTH ST. AND LAT^s N. & S.
S.S. No. 1-1889

Plat 9-44

TRAP AREA

Sewer deed #160-25 rods w. of N.E. cor. of S.W. 1/4 of S.E. 1/4 of NW 1/4 Sec. 16-27-1E, S. 65', E. 12 1/2 rds, N. 65' W. 12 1/2 rds. to beg except 15' off N side on E. Line.



725 A-14th
verified connected
to City sewer
by Dye test
9/14/07
per
Chris
Johnson
sewer
maint.

Easement #301 beg. 60'
W of N.E. cor., S.W. 1/4 of S.E. 1/4,
of NW 1/4 of Sec. 16, W. 146.25
S. 6 1/2 rod, E. 146.25, N. to beg.

Ord # 33-091 Alley Vacated.
PUE Retained

SANTA FE

MEAD

NINTH

ST.

ELEVENTH

ST.

AVE.

AVE.

CONSTRUCTION RECORD						SERVICE RECORD						
STATION	ELEVATION		Depth	MANHOLE	4-INCH "Y" BRANCHES		No. of Permit		House Number		DATE OF PERMITS	
	Ground	Grade			North West	South East	North West	South East	North West	South East	North West	South East
				6 + 30.0								
6	113.91	111.19	2.72		6 + 24.8	6 + 26.8				723 E		
					6 + 06.0	6 + 08.0		#1917		711		12-28-23
					5 + 81.5	5 + 83.5						
					5 + 57.0	5 + 59.0	#208	C47532	Standard oil	715 E. 10th St.	5-24-16	1/26/74
					5 + 32.3	5 + 34.3						
5	114.17	110.94	3.23		5 + 07.5	5 + 09.5		#4220		722 E. 97th		6-10-94
					4 + 83.0	4 + 85.0		#121		1011 N mead		3-26-51
					4 + 58.0	4 + 60.0	#207					2-6-24
					4 + 33.0	4 + 35.0						
4	114.81	110.69	4.12		4 + 08.0	4 + 10.0						
					3 + 83.5	3 + 85.5						
					3 + 59.3	3 + 61.3						
				3 + 20.0	3 + 35.8	3 + 37.8	#206		Standard oil			5-24-16
3	114.97	110.44	4.53		3 + 11.2	3 + 13.2						
					2 + 87.0	2 + 89.0						
					2 + 62.5	2 + 64.5						
					2 + 38.5	2 + 40.5						
2	114.87	110.19	4.68		2 + 14.0	2 + 16.0						
					1 + 90.0	1 + 92.0						
					1 + 65.6	1 + 67.6	#57930					
					1 + 41.4	1 + 43.4	#192					
1	115.46	109.94	5.52		1 + 17.0	1 + 19.0		#602		1055 mead		3-28-24
					0 + 92.5	0 + 94.5						
					0 + 68.0	0 + 70.0	#189	#5114	715 E. 10th	1057 N. Mead	5-15-16	8-15-62
					0 + 43.7	0 + 45.7		#222				5-6-53
					0 + 19.3	0 + 21.3						2-18-24
0	115.27	109.73	5.54	0 + 15.7	0 + 19.3	0 + 21.3						
	115.14	111.30	3.84	9 + 90.0								
					9 + 87.5	9 + 85.5						
					9 + 67.0	9 + 65.0		935947		717 E. 11th		11-13-72
					9 + 42.7	9 + 40.7		#552				3-26-52
9	114.96	111.07	3.89		9 + 17.3	9 + 15.3						
					8 + 93.3	8 + 91.3						
					8 + 68.5	8 + 66.5	#1486	#907	1136 N. Santa Fe	1145 N. mead	6-25-24	4-22-24
8	115.04	110.82	4.22		8 + 44.0	8 + 42.0						
					8 + 19.5	8 + 17.5						
					7 + 94.5	7 + 92.5						
					7 + 69.5	7 + 67.5						
					7 + 45.2	7 + 43.2						
7	115.10	110.57	4.53		7 + 20.5	7 + 18.5						
					6 + 95.5	6 + 93.5						
				6 + 81.8								
					6 + 70.5	6 + 68.5						
					6 + 46.7	6 + 44.7						
6	115.15	110.32	4.83		6 + 21.7	6 + 19.7						
					5 + 97.2	5 + 95.2	#1627		1140 N. Santa Fe			7-15-24
					5 + 72.3	5 + 70.3	#1626		1128 N. Santa Fe			7-15-24
					5 + 48.5	5 + 46.5	#1584	#2500	1110 N. Santa Fe	1121 N. mead		8-28-59
5	115.66	110.07	5.59		5 + 23.6	5 + 21.6						
					5 + 00.0	5 + 98.0		#832		120 E. 10th		7-29-25
					4 + 75.4	4 + 73.4	#2424		722 E. 10th			11-3-54
					4 + 50.8	4 + 48.8	#1583		1106 N. Santa Fe			7-9-24
4					4 + 26.2	4 + 24.2	#357	#2050	1002 N. Santa Fe	716 E. 10th		5-6-20
					4 + 02.0	4 + 00.0						9-9-24
					3 + 78.8	3 + 76.8						
3	115.64	109.75	5.89	3 + 73.0								
2	115.45	109.69	5.76	3 + 48.0								
1	115.45	109.32	6.13									
0	115.51	109.07	6.44									
0	115.65	108.91	6.74	0 + 36.0								

Tap #42671 - 715 E. 10th - Jensen Pibg. - 12-11-73 (7th 0+15.2) - (Tap - 0+27.7)
 Top - 1106 N. Santa Fe Jensen Pibg. 3-30-48 #1903
 6 on 8 wye - 717 E. 11th - Roy Miller - #5063 - 5-1-53 - Seal off 719 - 11-13-72 - at Henning (9+51)
 #11319 Set bon 8 wye - 1121 N. Mead - Miller + Underhill 8-24-59
 13554 tap 1153 N. Mead Charles Walburn 11-21-60 (7+45) @ 35948 - Seal off 11-13-72 at Henning