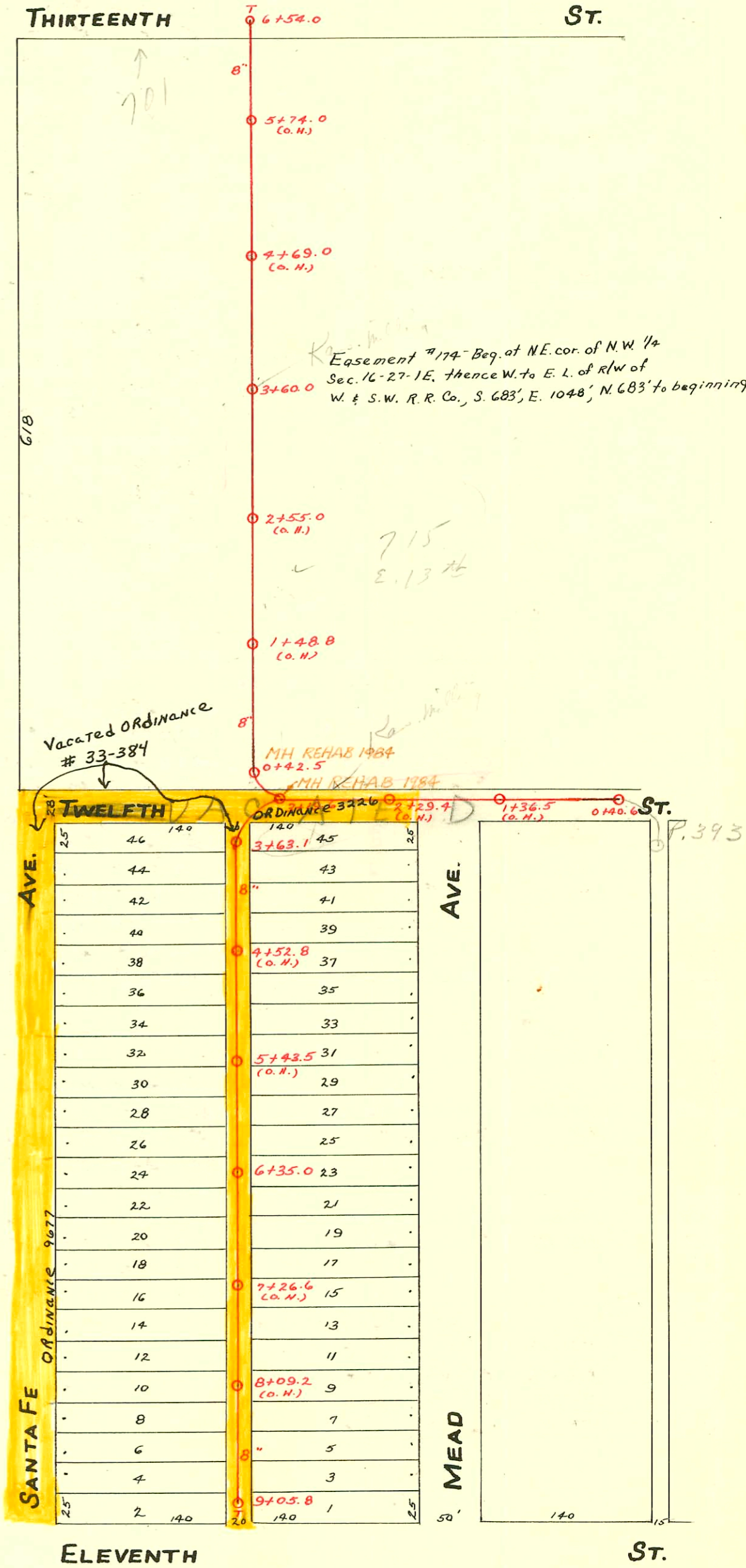


WEST SUB-MAIN "D" ON TWELFTH ST. AND LAT'S N. & S.

S.S. No. 1-1889

Plat J-44

TRAP AREA



CONSTRUCTION RECORD						SERVICE RECORD						
STATION	ELEVATION		Depth	MANHOLE	4-INCH "Y" BRANCHES		No. of Permit		House Number		DATE OF PERMITS	
	Ground	Grade			North West	South East	North West	South East	North West	South East	North West	South East
	115.93	112.53	3.40	6+54.0								
6	115.78	112.40	3.38		6+39.3	6+37.3			715 E 13th		12-17-06	
					6+15.0	6+13.0	#258					
					5+90.8	5+88.8						
					5+66.0	5+64.0	#80		715 E 13th St. (office)		3-9-18	1-12-71
					5+42.0	5+40.0						
5	116.00	112.15	3.85		5+17.0	5+15.0						
					4+92.5	4+90.5						
					4+67.8	4+65.8						
					4+43.4	4+41.4						
4	116.83	111.90	4.93		4+19.0	4+17.0						
					3+94.0	3+92.0						
					3+70.0	3+68.0						
				3+60.0	TAP 3+64.0			C34751	715 E 13th		9-7-72	
					3+45.0	3+43.0						
3	117.27	111.65	5.62		3+20.7	3+18.7						
					2+96.0	2+94.0						
					2+71.6	2+69.6						
					2+47.0	2+45.0						
2	116.45	111.40	5.05		2+22.0	2+20.0	#23197 1862		715 E 13th R		5-23-89 3-25-48	
					1+96.8	1+94.8						
					1+72.0	1+70.0						
					1+47.0	1+45.0						
1	115.75	111.15	4.60		1+22.0	1+20.0						
					0+97.0	0+95.0						
					0+72.5	0+70.5						
0				0+42.5								
				9+05.8								
9	115.22	112.35	2.87		9+03.8		#2145	#128	1202 N Santa Fe	1201 N mead	9-19-24	2-6-24
					8+85.0	8+87.0						
					8+60.5	8+62.5						
					8+36.3	8+38.3	#1669		1208 N Santa Fe		7-21-24	
8	115.55	112.10	3.45		8+03.5	8+05.5	#1670		1210 N Santa Fe		7-21-24	
					7+87.0	7+89.0	#1671		1212 N Santa Fe		7-21-24	
					7+62.0	7+64.0						
					7+37.4	7+39.4						
7	115.45	111.85	3.60		7+12.3	7+14.3	#1724		1218 N Santa Fe		7-25-24	
					6+88.0	6+90.0						
					6+63.4	6+65.4	#1869	#618	1222 N Santa Fe	1227 N Meade	8-15-24	6-8-25
					6+38.7	6+40.7						
				6+35.0								
6	116.52	111.60	4.92		6+13.5	6+15.5						
					5+89.0	5+91.0						
					5+64.0	5+66.0						
					5+40.0	5+42.0						
5	116.63	111.35	5.28		5+15.0	5+17.0						
					4+89.5	4+91.5						
					4+64.5	4+66.5						
					4+40.6	4+42.6						
4	116.07	111.10	4.97		4+16.2	4+18.2						
					3+91.8	3+93.8						
					3+67.3	3+69.3						
	115.73	111.01	4.72	3+63.1								
3	115.92	110.90	5.02	3+19.6								
2	115.53	110.60	4.93									
1	117.21	110.35	6.86									
0	117.18	110.20	6.98	0+40.6								

2000-01539-62900 - Piping + Equip - 4" SCH 40 - Tied in existing sewer (Refer to P1m 2000-02648)
 1999-01455-12/14/99-715 E 13th (Frederick, PLBG) instal 6" Sch 40 - Pit that goes to storm
 #94-00 3441 - 715 E 13th (Prunace Service - Repair) 3-15-94 - tied to existing line
 C20083 top 737 E. 13th Ernest Schwaner 7-13-70 (4+74.4)

#173 Top - 3-27-14
 #1793 - Kansas Mill - 50' E. of 3+19.6 - 12-6-23
 Top - #302 - Kansas Mill Co. - 7-31-36 - at M.H. 3+60 - Johnson Plbg.
 #1728 Top - 715 E. 13th - Proj. Bros. - 12-11-48