

MAIN "D" FROM ELEVENTH ST. TO THIRTEENTH ST.

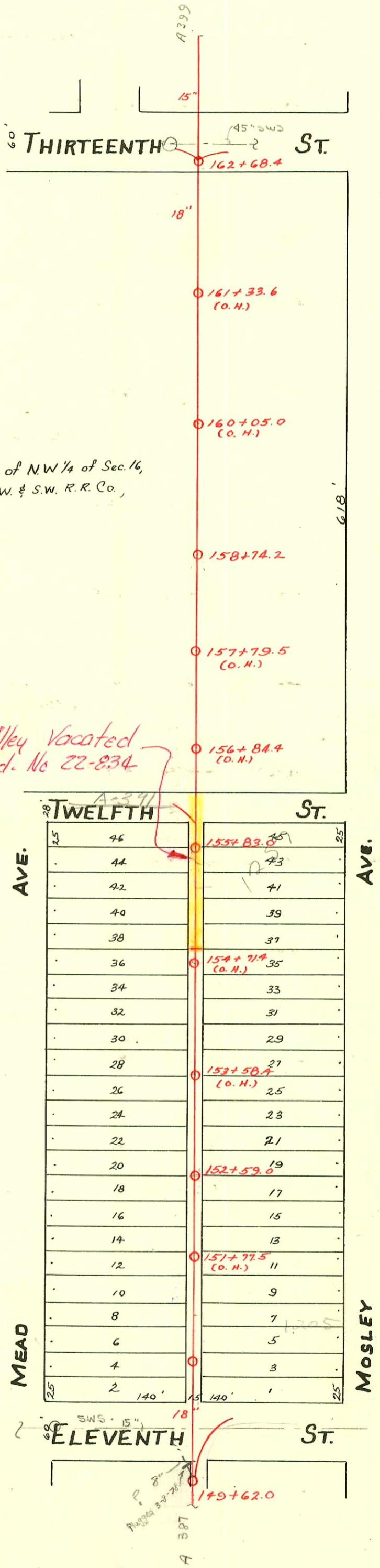
S.S. No. 1- 1889

Plat 9-44

TRAP AREA

Easement #174 - Beg. at N.E. cor. of N.W. 1/4 of Sec. 16,
27- 1E, thence W. to E.L. of R/W of W. & S.W. R.R. Co.,
So. 683', E. 1048', N. 683'

Alley Vacated
Ord. No 22-834



SCALE 1"=100'

CONSTRUCTION RECORD						SERVICE RECORD						
STATION	ELEVATION		Depth	MANHOLE	4-INCH "Y" BRANCHES		No. of Permit		House Number		DATE OF PERMITS	
	Ground	Grade			North West	South East	North West	South East	North West	South East	North West	South East
				162+68.4								
162	116.55	110.22	6.33		162+60.2	162+58.2						
					162+39.5	162+37.5						
					162+14.9	162+12.9						
					161+88.2	161+86.2						
					161+63.6	161+61.6						
161	116.33	110.12	6.21		161+41.1	161+39.1						
					161+16.1	161+14.1						
					160+91.0	160+89.0						
					160+66.0	160+64.0	#2187		1337 N. Mosley		12-19-80	
					160+41.8	160+39.8	#1626				11-13-29	
					160+17.5	160+15.5						
160	117.29	110.02	7.27									
					159+93.3	159+91.3						
					159+68.9	159+66.9						
					159+44.8	159+42.8						
159	117.41	109.92	7.49		159+20.5	159+18.5						
					158+96.2	158+94.2						
				158+74.2								
					158+69.3	158+67.3						
					158+45.0	158+43.0						
158	117.22	109.82	7.40		158+20.2	158+18.2						
					157+94.0	157+92.0						
					157+66.5	157+64.5						
					157+45.0	157+43.0	#1006		1309 N. Mosley		10-27-47	
157	117.17	109.72	7.45		157+18.2	157+16.2						
					156+92.0	156+90.0						
					156+69.4	156+67.4						
					156+44.4	156+42.4						
156	117.14	109.02	7.52		156+20.9	156+18.9						
				155+83.0								
					155+66.4	155+64.4	#16821		1257 N. Mosley		8-8-86	
					155+40.8	155+38.8	762		1257 N. Mosley		7-5-49	
					155+14.3	155+12.3	19300		1249 N. Mosley		6-12-87	
155	116.17	109.52	6.65		154+90.0	154+88.0	#1907				8-20-26	
					154+65.8	154+63.8	#183		1232 N. Mead		3-18-27	
					154+42.0	154+40.0	#184	#21061	1230 N. Mead	1247 N. Mosley	3-18-27	7-12-88
154	116.24	109.42	6.82		154+15.7	154+13.7	#185	1019	1228 N. Mead		3-18-27	9-15-25
					153+91.3	153+89.3	#186		1226 N. Mead		3-18-27	
					153+67.0	153+65.0						
					153+42.8	153+40.8	#14464	#553	1229 N. Mosley		2-19-64	5-21-25
153	115.57	109.32	6.25		153+18.0	153+16.0						
					152+93.5	152+91.5						
					152+69.0	152+67.0	#64		1227 N. Mosley		4-18-32	
				152+59.0								
					152+42.5	152+40.5	#2330		1217 N. Mosley		10-15-24	
152	114.84	109.22	5.62		152+17.2	152+15.6	#257		1227 N. Mead		7-17-51	
					151+92.8	151+90.8						
					151+67.2	151+65.2						
					151+43.9	151+41.9	#2152		800 E. 1179		3-11-49	
151	114.66	109.12	5.54		151+19.5	151+17.5						
150	115.10	109.02	6.08		150+95.1	150+93.1						

#3222 - Top - 1206 N. Mead - 11-28-50 - J. V. McKee
 #777 - Top - 1305 N. Mosley - 4-26-54 - Howard Cowan.
 4946 - Top - 1201 N. Mosley 8-14-57 Louise
 #6432 Top - 1305 N. Mosley 3-27-57 aldering