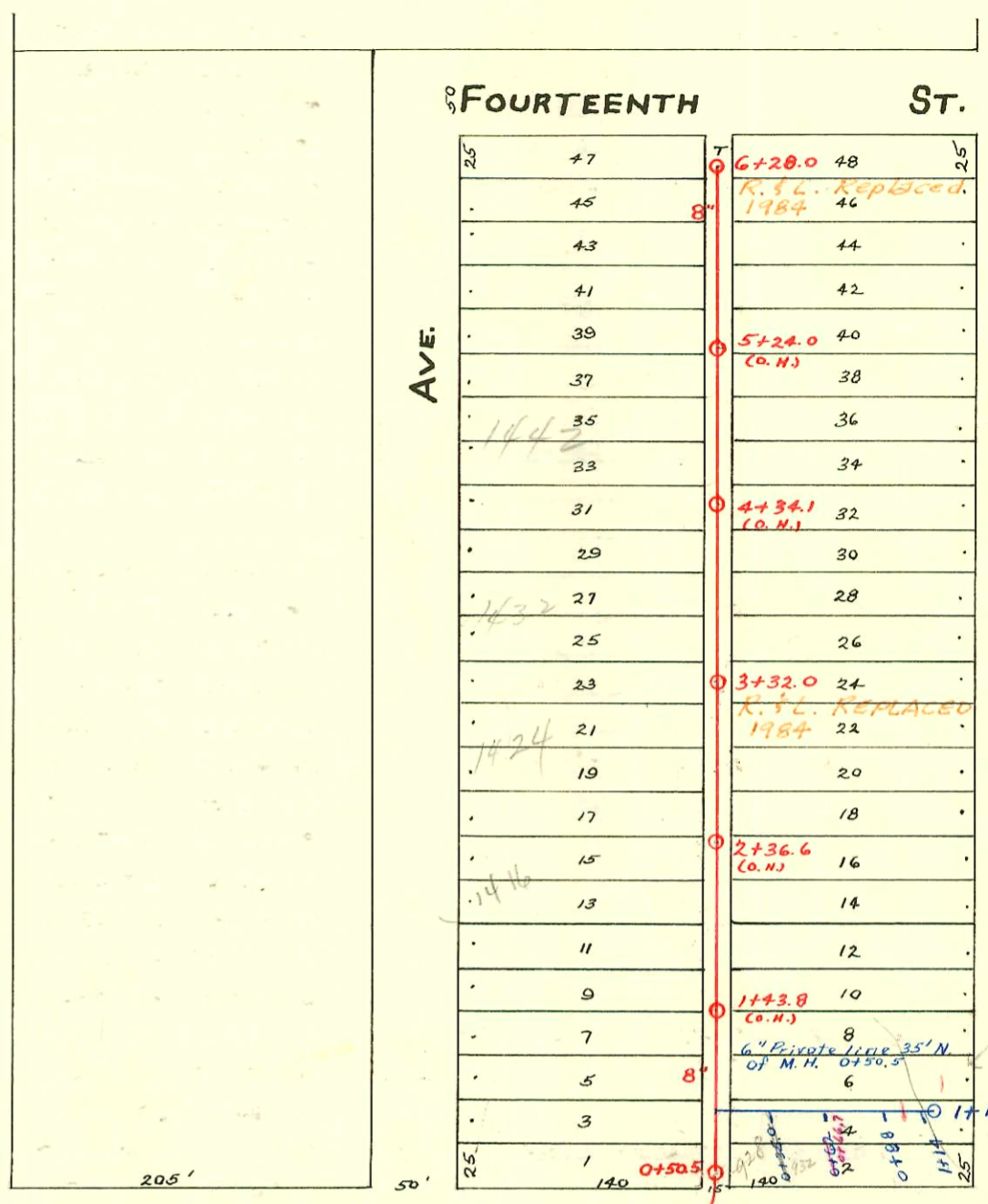


EAST SUB-MAIN "D" ON THIRTEENTH ST & LAT'S N. & S.
S. S. No. 1 - 1889

Plat 9-44

TRAP AREA



Easement #174 - Beg. at N.E. cor. of N.W. 1/4 Sec. 16-27-1E. thence W. to E. L. of R/W of W. & S.W. R.R. Co. thence S. 683', E. 1048', N. 683' to beg. of

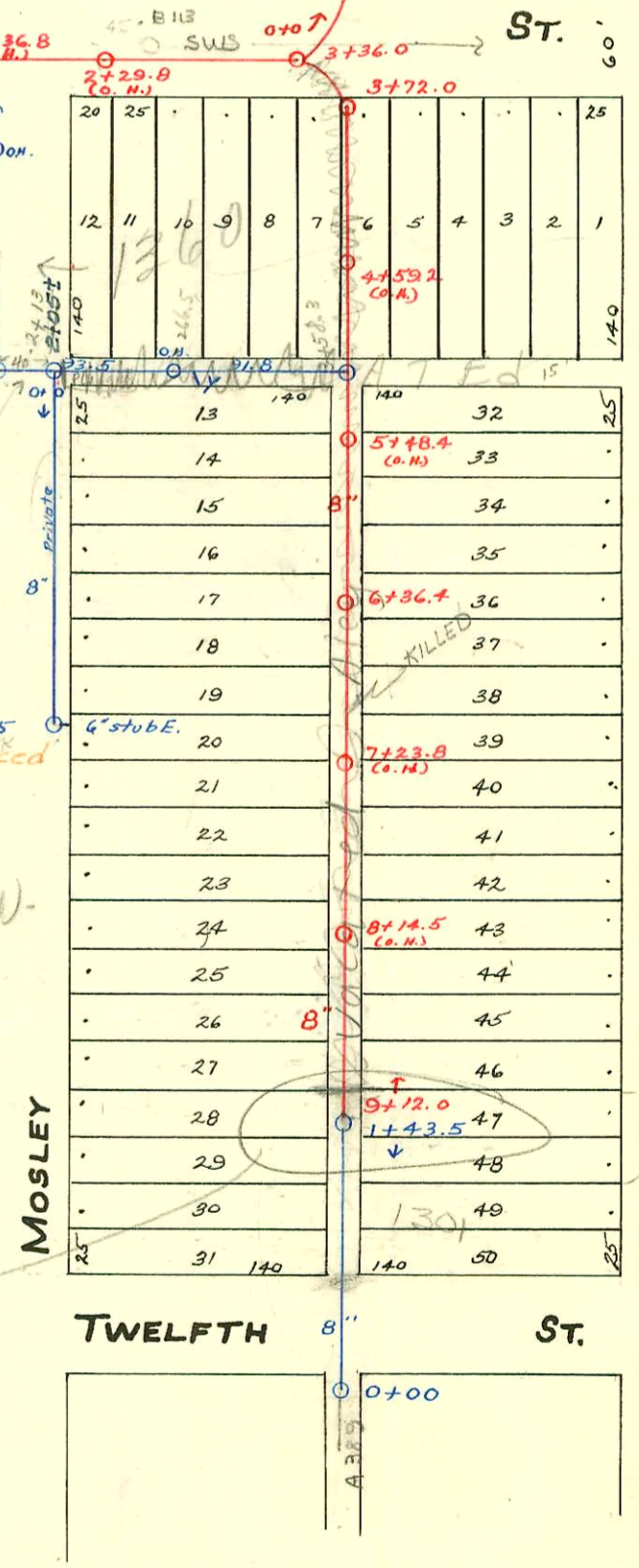
m. N. 2+13 is 6 ft. E. of Seal Coat on Mosley and 153 ft. S. of S. H. on S. side of 13-25

Tap #C17922 - 1360 N. Mosley - Herb Horner - 2-9-70 (Tap MA. 2+13.)

96182477 10-24-96 1428 N Mosley (2nd add 1424 - Dual add) - New Com for Bldg addition -

1340 N Mosley

MT 1+43.5 only has LEFT 8" stub N. of IF 1340 N Mosley wants to connect to this MT - must do join from EJM + from owner whose land he would like per final plan. Sewer Maint. 12-5-07



Completed by East from 20:1 ft. and gully to (w/pipe 6.7' east)

6-2-19-97 3-16-54

CONSTRUCTION RECORD

SERVICE RECORD

STATION	ELEVATION		Depth	MANHOLE	4-INCH "Y" BRANCHES		No. of Permit		House Number		DATE OF PERMITS			
	Ground	Grade			North West	South East	North West	South East	North West	South East	North West	South East	North West	South East
6	117.93	113.13	4.80	6+28.0	6+20.5	6+18.5	#28729		14545		10-26-71			
					5+96.0	5+94.0	#1888		770-6277		8-18-24			
					5+72.0	5+70.0	#1734	#710	1448 N Mosley	1455 N Washington	2-9-62	9-24-46		
5	118.09	112.88	5.21		5+47.0	5+45.0	#1489		1446 N Mosley		7-25-39			
					5+22.9	5+20.9					6-25-24			
					4+97.5	4+95.5								
					4+73.0	4+71.0	#2159		1434 N Mosley		9-22-24			
					4+48.5	4+46.5	#1487		1442 N Mosley		11-1-61			
					4+24.2		#1457		1440 N Mosley		6-27-24			
4	117.44	112.63	4.83		4+00.0	4+22.2	#1732	#1986	1437 N Washington		8-17-50			
						3+98.0								
					3+75.2	3+73.2	#1638		1420 N Mosley		7-16-24			
					3+57.6	3+49.6								
				3+32.0										
3	116.78	112.38	4.40		3+27.0	3+25.0	#4157		1428 N Mosley		4-22-74			
					3+02.0	3+00.0	#6680		1422 N Mosley		10-12-53			
					2+77.7	2+75.7	#2243				4-4-73			
					2+59.2	2+57.2					10-3-24			
					2+28.5	2+26.5	#1545		1416 N Mosley		12-1-65			
2	117.34	112.13	5.21		2+03.5	2+01.5	#652		Record		7-23-24			
					1+78.5	1+76.5	#1484				6-25-24	9-4-17		
					1+54.0	1+52.0	#2253		1412 N Mosley		8-27-45			
					1+30.0	1+28.0	#1113		1409 N Washington			11-14-21		
1	116.48	111.83	4.65		1+05.0	1+03.0	#59		922 E	730 E	4-22-49			
					0+80.5	0+78.5	#148	#1372	1375	1375	1-28-24	6-11-24		
					0+55.8	0+53.8	#185		912 E		3-15-20			
0	116.34	111.71	4.63	0+50.5										
					9+59.5	9+62	Taken	#422		1301 N Washington		5-24-27		
					9+34.5	9+37	Taken	?		1305 N Washington		?		
9	116.92	113.00	3.92	9+12.0	9+07.7	9+09.7	#2263		1306 N Mosley		10-12-38	9-6-50		
					8+83.4	8+85.4	#1139							
					8+59.0	8+61.0								
					8+34.6	8+36.6								
8	116.18	112.75	3.43		8+10.7	8+12.7								
					7+86.2	7+88.2								
					7+62.0	7+64.0								
					7+38.2	7+40.2								
7	116.50	112.50	4.00		7+14.0	7+16.0								
					6+89.5	6+91.5								
					6+65.5	6+67.5								
					6+41.8	6+43.8								
				6+36.4										
6	116.52	112.25	4.27		6+17.8	6+19.8								
					5+93.0	5+95.0								
					5+69.0	5+71.0								
					5+44.8	5+46.8								
5	117.17	112.00	5.17		5+20.8	5+22.8								
					4+96.2	4+98.2								
					4+62.0	4+64.0								
					4+48.0	4+50.0		#644		1009 E		8-19-20		
					4+23.8	4+25.8				1375				
4	116.75	111.75	5.00		4+00.0	4+02.0	#360		School Bd.		7-31-12			
					3+75.7	3+77.7	#298		School Bd.		6-25-12			
3	116.42	111.58	4.84	3+36.0			#299		School Bd.		6-25-12			
2	117.17	111.25	5.92											
1	117.16	111.00	6.16											
0	117.14	110.85	6.29	0+41.0										
0	116.5	112.20	4.3	0+0										
1	116.3	112.30	4.0											
	116.2	112.39	3.8	1+88.5		6" stub E.	#3302		1340 N Mosley		2-2-55			
	115.2	113.45	1.8	0+0										
					0+65	0+86.5								
					1+17.0	1+36.0								
					1+43.5									
					0+00									
					0+56.5 O.H.									
					1+79.0									
					2+05.2+13									

Rock Island Lbr. Co.-Private San. Sewer BK-JF 60. Dec. 6 1954 W.B. Carter Co.

Private san. sewer-W.B. Carter 12-6-54 BK-JF 60.

#693- Private line - 6-12-43 - 938 E. 13th - Frank McCoy (Conn. 1+14)
 #2856- Top-928 E. 13th - 12-16-49 - Eugene Reynolds #16387 Seal #1-928 E. 13th Lowell Miller 11-20-62
 #4868 - wye - 1411 N. Washington - 5-19-55 - Miller #176 Co. (17250)
 #83509 - Private line - 932 E. 13th - Kendall Perry 6-2-65 - (last sewer line under ally)
 C1071 - 9-22 E. 13th - Jones Elly 12-5-66 - top
 C54996 - 1424 N. Mosley - 4-26-76 (3+32.0)
 C70241 - 936 E. 13th - Sealoff - 2-20-77 - Henning
 C75925 S.O. 1300 N. Mosley Al Henning 1-3-80