

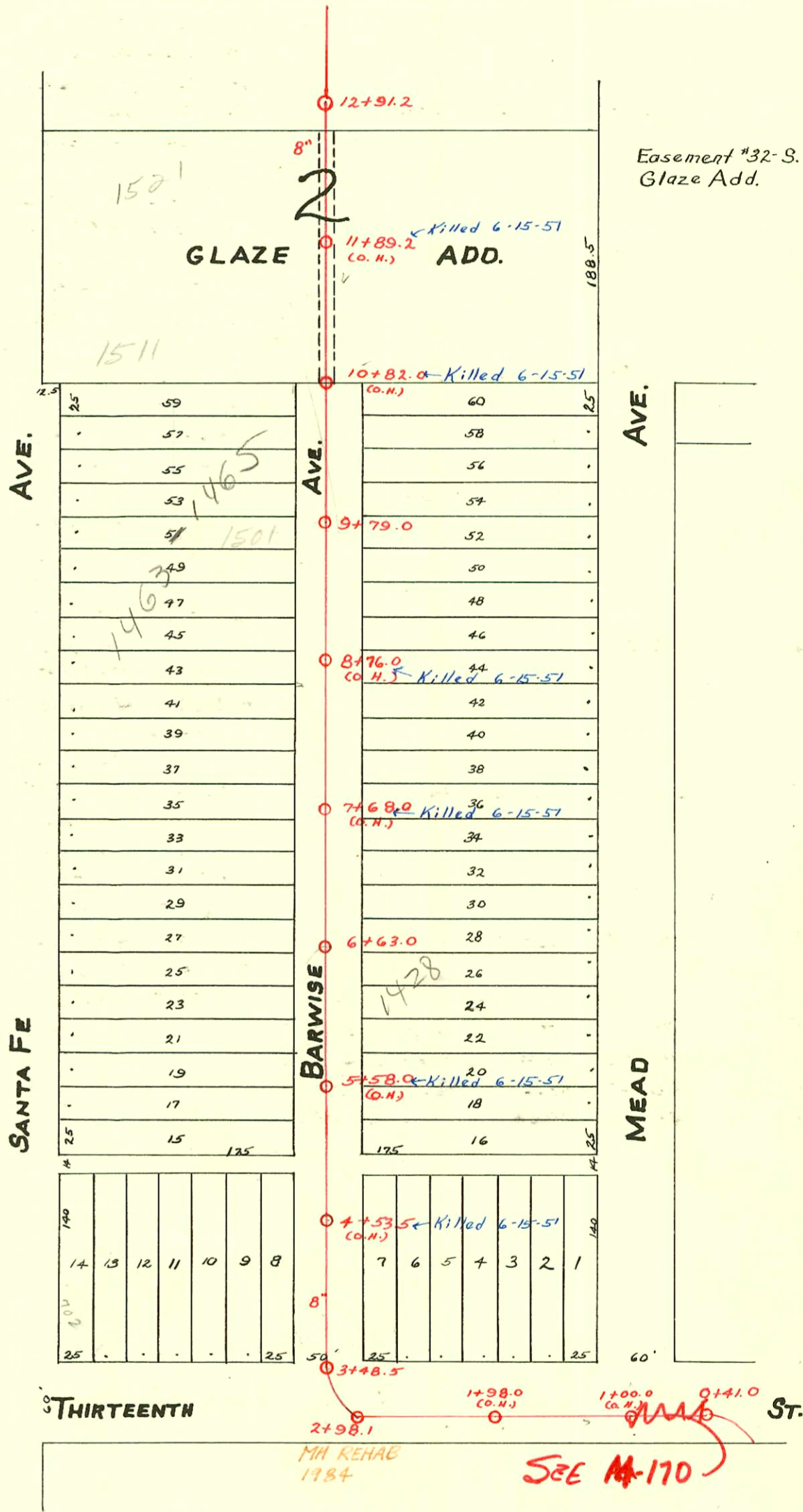
WEST SUB-MAIN "D" ON THIRTEENTH ST. AND LAT. N.
S.S.No. 1-1889

Plat 9-41

TRAP AREA

Easement #60-N. 1/2 Lot 2- Glaze Add.

Easement #32-S. 1/2 Lot 2- Glaze Add.



THIRTEENTH

ST.

MH REHAB
1984

SEE M-170

CONSTRUCTION RECORD						SERVICE RECORD						
STATION	ELEVATION		Depth	MANHOLE	4-INCH "Y" BRANCHES		No. of Permit		House Number		DATE OF PERMITS	
	Ground	Grade			North West	South East	North West	South East	North West	South East	North West	South East
				12+91.2								
					12+87.0	12+85.0						
					12+62.0	12+60.0						
					12+37.0	12+35.0						
12	116.75	113.75	3.00		12+12.0	12+10.0						
					11+87.0	11+85.0						
					11+62.0	11+60.0		#235	1515 N Mead			6-18-48
					11+42.2	11+38.2						
11	117.27	113.50	3.77		11+15.7	11+13.7	#18943 725		1511 Barwise		2-27-64 6-15-43	
					10+90.7	10+88.7						
					10+66.0	10+64.0		#19	1506 Barwise			2-16-21
					10+40.8	10+38.8						
10	117.81	113.25	4.56		10+16.3	10+14.3						
					9+91.0	9+89.0						
				9+79.0	Seal off 9+71							
					9+66.0	9+64.0	#201 00103	#952 #926	1501 Barwise	1508 Barwise	2-23-41 8-28-25	10-15-47
					9+40.7	9+38.7						
9	118.73	113.00	5.73		9+15.8	9+13.8						
					8+91.0	8+89.0						
					8+66.0	8+64.0						
					8+41.0	8+39.0						
8	118.15	112.75	5.40		8+16.0	8+14.0						
					7+91.0	7+89.0		#598	1448 Barwise			7-28-20
					7+67.0	7+65.0						
					7+41.0	7+39.0						
7	118.17	112.50	5.67		7+16.7	7+14.7						
					6+92.7	6+90.7						
					6+69.0	6+67.0		#2440	1446 Barwise			11-19-45
				6+63.0								
					6+44.5	6+42.5						
6	116.84	112.25	4.59		6+20.7	6+18.7						
					5+96.5	5+94.5	#01198		710 E. 13th		9-10-50	2-8-50
					5+80.0	5+78.0	#3248					
					5+72.3	5+70.3						
					5+49.0							
					5+24.5	5+22.5	#242		NO Record 1409 Barwise		5-3-18	
5	116.67	112.00	4.67		5+00.5	5+22.5	#246				10-28-08	
						4+98.5		#271	1434 Barwise			3-31-50
					4+76.4	4+74.4		#6959	1408 Barwise			11-28-55
					4+52.0	4+50.0						
					4+27.5	4+25.5		#1127	736 E. 13th			10-12-20
4	116.65	111.75	4.90		4+54.5	4+52.5	#59	#6960	702 E. 13th		2-13-11	11-28-55
					4+03.0	4+01.0		#2322	730 E. 13th			3-23-49
					3+79.0	3+77.0		#650	726 E. 13th			6-16-25
					3+54.5	3+52.5			730 E. 13th			
3	116.51	111.62	4.89	3+48.5								
2	116.23	111.49	4.74	2+98.1								
1	118.05	111.00	7.05									
0	117.27	110.83	6.44	0+41.0								

2001-00485-3161-1520 Barwise-Bowers-4" SCH 40, installed Trap, ITWINCO

S.O. 072184-710 E. 13th-6-4-79

#2559 Tap-1533 Barwise-10-4-50-R. LaFoy
 JUNE 2006-01297-730 E 13th St-Trap replacement-28.7' N y mt, trap, (1)224, (2)45V, (1)22V-mies-5-22-04