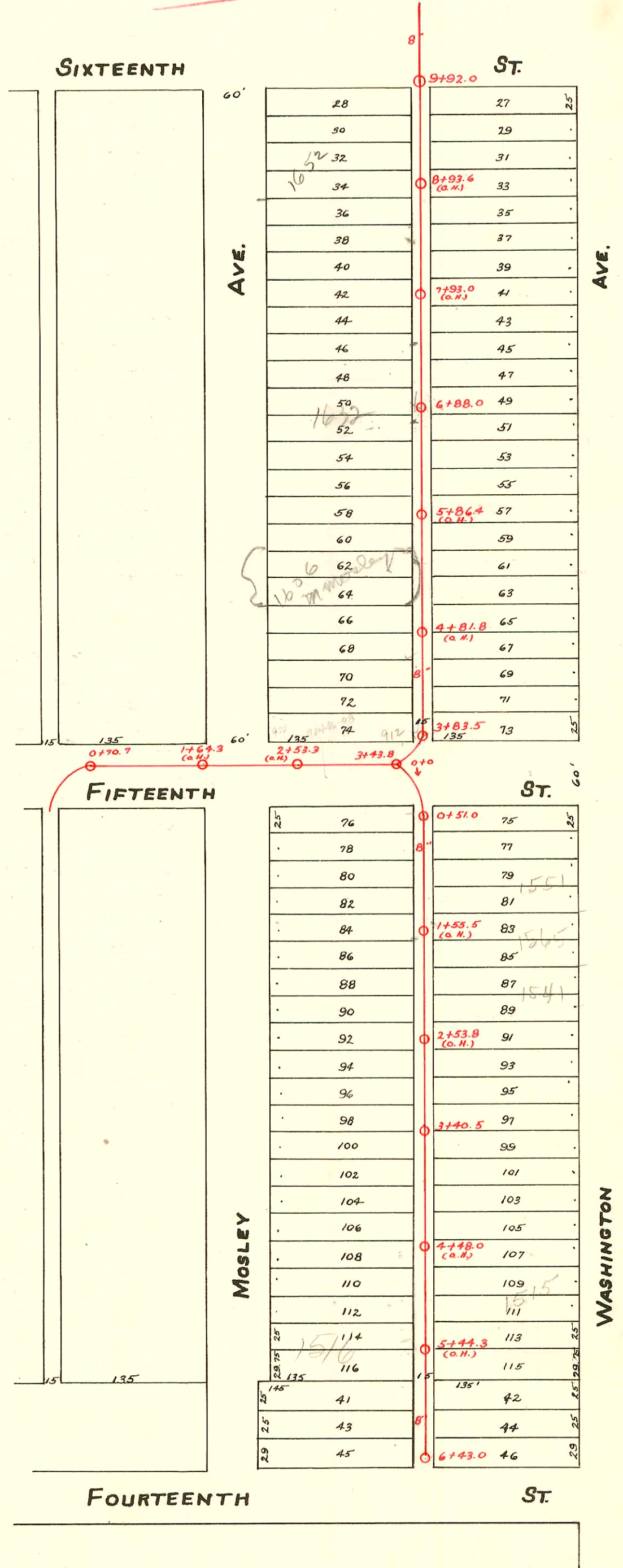


EAST SUB-MAIN "D" ON FIFTEENTH ST. AND LAT<sup>s</sup> N. & S.  
S. S. No. 1- 1889

Plat 9-41

TRAP AREA



CONSTRUCTION RECORD

SERVICE RECORD

STATION	ELEVATION		Depth	MANHOLE	4-INCH "Y" BRANCHES		No. of Permit		House Number		DATE OF PERMITS	
	Ground	Grade			North West	South East	North West	South East	North West	South East	North West	South East
				6+43.0								
6	117.84	114.57	3.27		6+32.3	6+34.3	#6731	#1647	1500 N. Mosley	1501 N. Washington	10-19-53	7-13-44
					6+08.5	6+10.5	#1658		1504 N. Mosley		7-18-24	
					5+84.5	5+86.5						
					5+60.5	5+62.5						
5	118.59	114.32	4.27		5+36.5	5+38.5	#1722	#3049	1506 N. Mosley	1511 N. Washington	7-25-24	10-16-63 6-13-56
					5+13.5	5+15.5						4-7-65
					4+88.5	4+90.5						
					4+64.5	4+66.5	#2076		1518 N. Mosley		9-12-24	
					4+40.5	4+42.5						
4	118.85	114.07	4.78		4+16.0	4+18.0						
					3+92.3	3+94.3	#1678		1524 N. Mosley		10-26-71	
					3+68.0	3+70.0	#2024		1528 N. Mosley		7-21-24	
3	117.90	113.72	4.18	3+40.5	3+44.0	3+46.0					8-21-50	
					3+20.0	3+22.0	#4049		1532 N. Mosley		4-5-66	
					2+96.5	2+98.5					4-5-55	
					2+72.5	2+74.5	#340		1534 N. Mosley		10-26-71	
					2+48.2	2+50.2	#5767		1541 N. Washington		4-6-25	10-16-63 7-9-53
					2+24.0	2+26.0						
2	117.90	113.47	4.43		2+00.0	2+02.0	#2340		1538 N. Mosley		10-16-24	
					1+75.5	1+77.5	#11248		1540 N. Mosley		8-21-59	
					1+51.0	1+53.0						
					1+27.5	1+29.5	#1917		1540 N. Mosley		8-22-24	
1	118.13	113.22	4.91		1+03.5	1+05.5	#2325	#1249	1542 N. Mosley	1557 N. Washington	10-9-45	5-13-52
					0+79.0	0+81.0						
0	117.61	113.10	4.51	0+51.0	0+54.5	0+56.5	#806		1546 N. Mosley		7-20-25	
				9+92.0								
					9+69.3	9+67.3						
					9+45.7	9+43.7	#2534			921 E. 16th		11-21-49
9	117.94	114.36	3.58		9+21.8	9+19.8						
					9+08.0	8+96.0						
					8+71.5	8+69.5	#20783		1640 N. Mosley		6-3-88	
					8+47.5	8+45.5	#1783		1640 N. Mosley		8-11-65	
8	117.76	114.11	3.65		8+23.8	8+21.8					8-7-24	
					7+99.5	7+97.5						
					7+75.0	7+73.0						
					7+51.5	7+49.5	#2079		1638 N. Mosley		9-12-24	
					7+27.5	7+25.5	#46		1639 N. Washington		5-19-47	
7	117.74	113.86	3.88		7+03.5	7+01.5						
				6+88.0								
					6+79.5	6+77.5	#782		1620 N. Mosley		4-25-50	
					6+55.2	6+53.2						
					6+31.2	6+29.2	#28026		1632 N. Mosley		9-16-71	
6	117.90	113.61	4.29		6+07.0	6+05.0	#1113		1621 N. Washington		9-30-66	10-1-43
					5+82.7	5+80.7	#2381		1606 N. Mosley		12/12/71	
					5+58.6	5+56.6	#57521		1610 N. Mosley		10-22-24	
					5+34.7	5+32.7					9-2-76	
5	117.40	113.36	4.04		5+10.5	5+08.5	#38414		1610 N. Mosley		4-19-73	
					4+86.0	4+84.0	#633				6-11-25	
					4+62.0	4+60.0	#2816	#1647	906 E. 15th	914 E. 15th	4-4-73	8-8-72
					4+38.3	4+36.3	#38056		1577	1576	3-14-46	3-20-47
4					4+14.0	4+12.0					4-4-73	
					3+89.3	3+87.3						
3	117.36	113.07	4.29	3+83.5								
2	117.66	112.97	4.69	3+43.8								
1	117.84	112.36	5.48									
0	118.18	112.29	5.89	0+70.7								

C54392 - 1530 N. Mosley - 3-24-76  
 C6857-1642 N. Mosley - Dealoff - at Henry - 9-12-68  
 C38353 #110 - Tap - 1600 N. Mosley - 7-1-32 - Tess Hanna - Dealoff - Dealoff - 4-18-73  
 #2741 - Tap - 1650 N. Mosley - 10-17-50 - Cherry Pkwy. Co.  
 #6944 - 4 on 10 wye - 1500 N. Mosley - 1-13-55 - Miller & Nebert Pkwy.  
 C450917570 6 on 8 (1565 N. Washington) at Henry 7-23-58 C-3-74 at Henry (1+65.8)  
 #22255 - 10/14/88 1652 N. Mosley - Newcom - Rick Nany - (9+21.5 top 4" ABS 40)