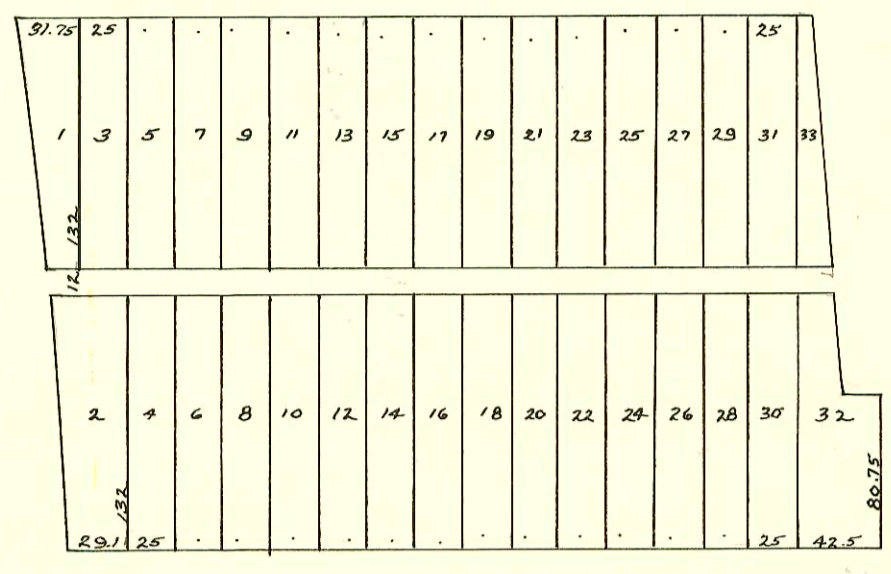


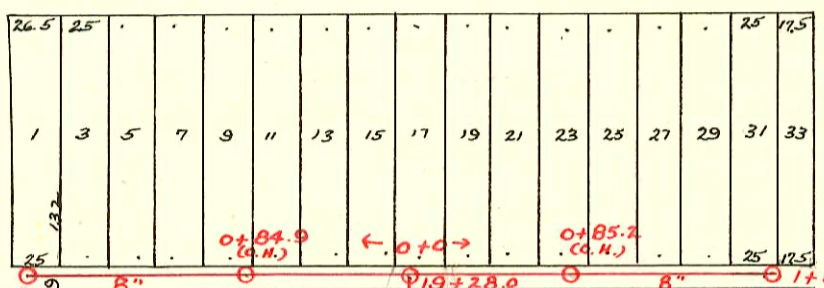
NORTH END OF LAT. No. FROM WEST SUB-MAIN "D" ON 13TH ST.
ALSO WEST SUB-MAIN "D" IN ALLEY SOUTH OF PEARL ST.

S.S. No. 1-1089

Plat 9-41



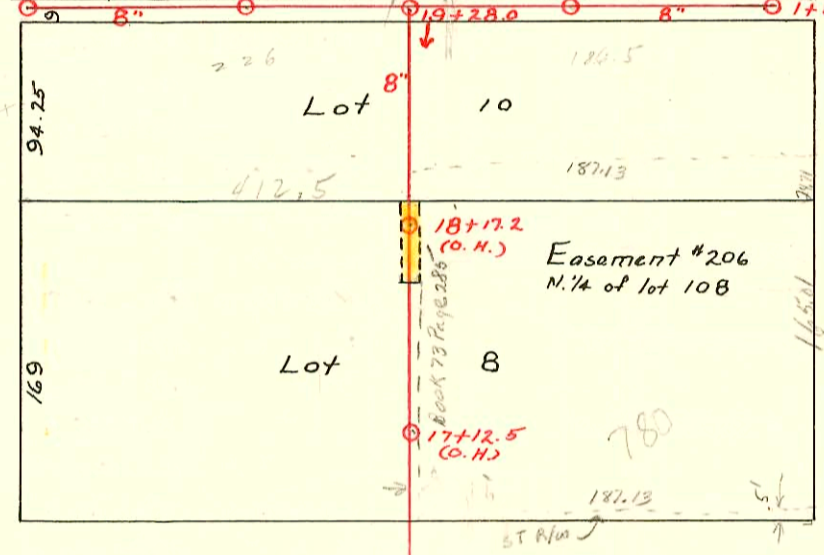
PEARL ST.



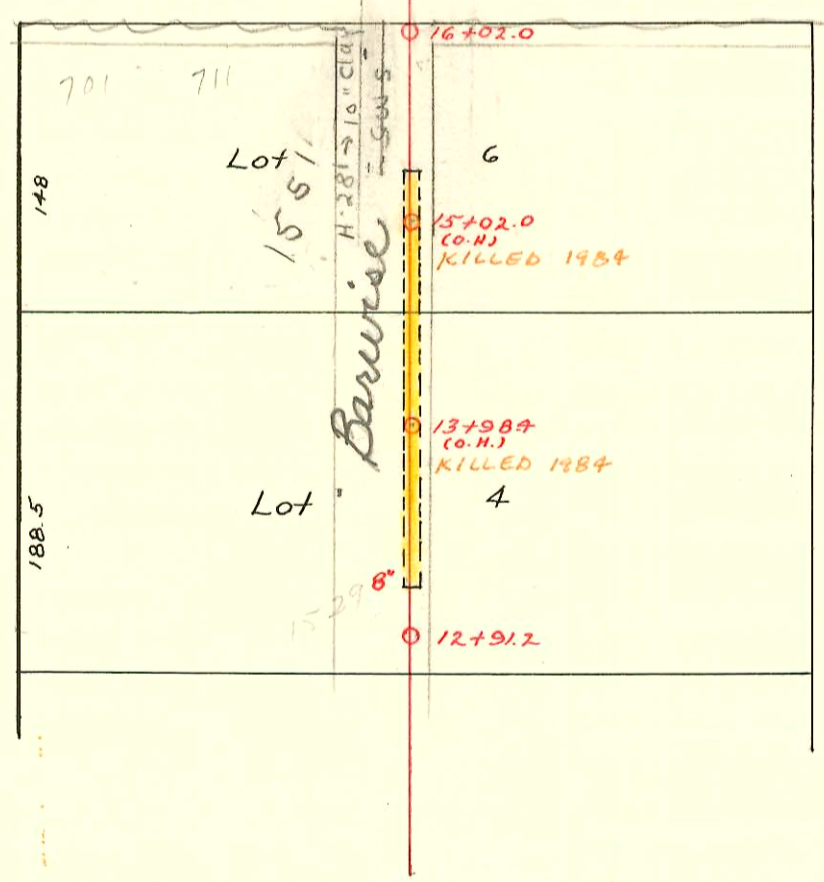
TRAP AREA

1+99.0 (C.H.)

AVE.



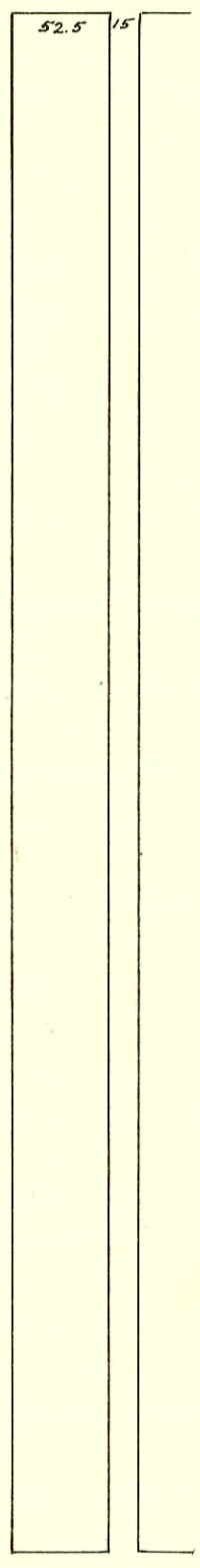
FIFTEENTH ST.



Easement #60 Thru S. 1/2 lot 6 and N 3/4 lot 4.

SANTA FE

MEAD



CONSTRUCTION RECORD

SERVICE RECORD

STATION	ELEVATION		Depth	MANHOLE	4-INCH "Y" BRANCHES		No. of Permit		House Number		DATE OF PERMITS	
	Ground	Grade			North West	South East	North West	South East	North West	South East	North West	South East
Branch West	118.94	116.07	2.87	1+99.0 (6.4)								
					1+97.5							
					1+76.0							
					1+51.0							
					1+26.5							
1	118.95	115.82	3.13									
					0+77.0							
					0+52.0							
					0+27.2							
0					0+03.5							
Branch East.	119.55	116.03	3.52	1+85.0								
					1+61.4							
					1+37.0							
1	119.87	115.82	4.05									
					1+12.2							
					0+63.0							
					0+39.0							
0					0+15.0							
				19+28.0								
19	118.41	115.50	2.91		19+02.0	19+00.0						
					18+77.3	18+75.3						
					18+52.5	18+50.5						
					18+27.7	18+25.7						
18	117.85	115.25	2.60		18+03.0	18+01.0	#2432	#91	Swallow #2	1607 N. Mead	4-7-49	2-27-11
					17+78.4	17+76.4						
					17+54.0	17+52.0						
					17+29.0	17+27.0	#232	#429	1600 N. Santa Fe		10-14-08	8-24-15
17	118.03	115.00	3.03		17+06.5	17+04.5	#241	#202	1500 N. Santa Fe	1636 N. Mead	10-24-08	4-8-10
					16+82.0	16+80.0						
					16+57.0	16+55.0						
					16+32.5	16+30.5						
16	117.45	114.75	2.70	16+02.0	16+07.2	16+05.2						
					15+83.0	15+81.0						
					15+58.0	15+56.0						
					15+33.5	15+31.5						
15	117.84	114.50	3.34		15+08.5	15+06.5	#5043		1545 Barwise	717 E. 15th	6-19-57	6-30-26
					14+83.5	14+81.5		#563				
					14+58.5	14+56.5						
					14+34.0	14+32.0						
14	116.95	114.25	2.70		14+09.3	14+07.3	#874		1537 Barwise		7-15-49	
					13+84.0	13+82.0						
					13+59.0	13+57.0						
					13+34.0	13+32.0						
13	116.60	114.00	2.60		13+11.0	13+09.0						
12				12+91.2								

Tap C51625 - 780 E. 15th No. 9/30/75 (18+06)
 Tap C49964 - 780 E. 15th No. 6/18/75 (11+03.6)
 #2320 - Tap in 15th St. Sewer - 711 E. 15th - 10-9-45 - Nelson P/bq. Co.
 #416 - Tap - 712 E. 15th - 7-19-48 - C.L. Brodie
 #4770 - Tap - 1537 Barwise - 4-9-53 - LaFoy P/bq. Co.
 93-1619-7 1-27-93 1551 N. Barwise - Miles Const -
 Replaced 19th of 6" SDR35 at Building - Tied onto 6" Clay Tile