

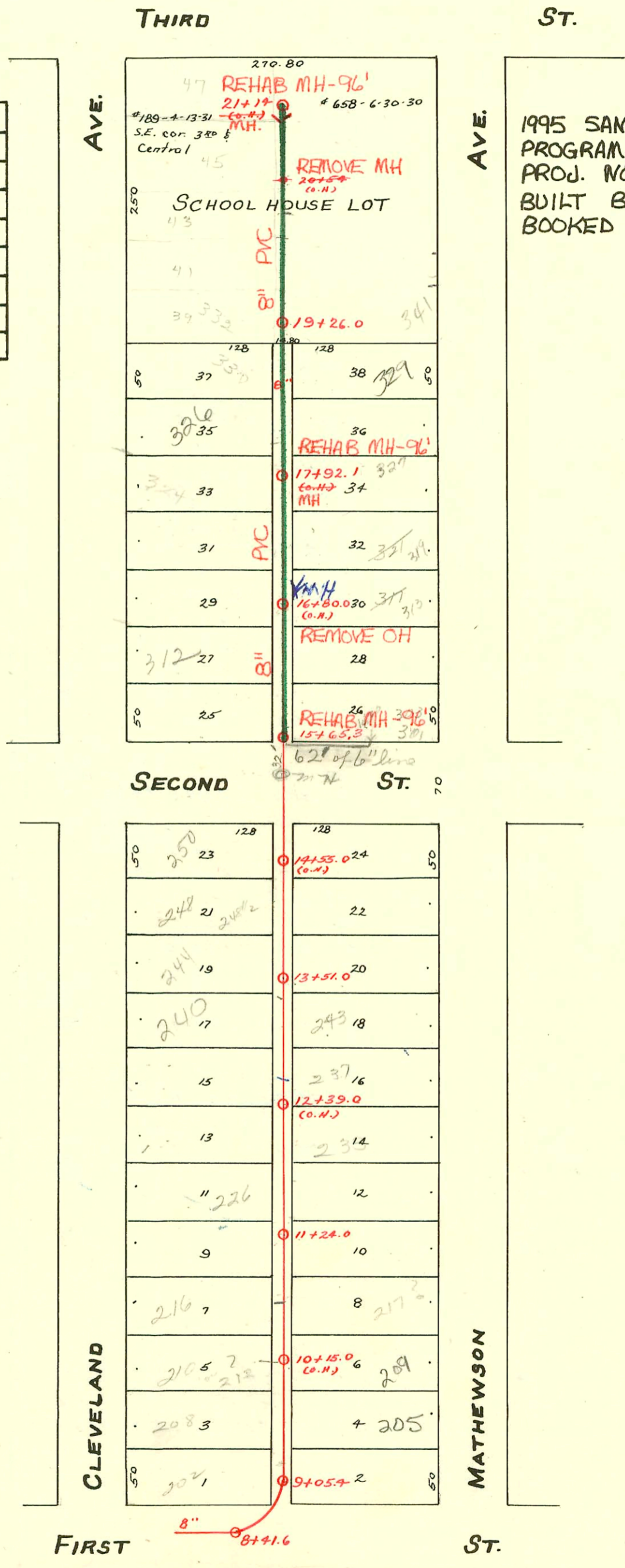
CLEVELAND LATERAL EAST - S.S. No. 2-1900
 DIST. Y- S.S. No. 20-1920

Plat 9-55

TRAP AREA

RECONNECTIONS

STA.	ADDRESS	DIRECTION
19+53.3	332 Cleveland	Left
19+91.3	344 Cleveland	Left
20+30.3	347 Mathewson	Right
20+34.3	346 Cleveland	Left
20+59.3	355 Mathewson	Right
20+75.3	352 Cleveland	Left
21+07.3	415, 417, 419 & 421 E. 3 RD	Right
21+06.3	401, 403, 405 & 407 E. 3 RD	Left



1995 SANITARY SEWER REHABILITATION PROGRAM - PHASE IV
 PROJ. NO. N/A (621128)
 BUILT BY W. B. CARTER CONST. CO.
 BOOKED 7/29/96 FROM AS BUILTS

91-39419-7 12-26-91 217 N. Mathewson - Hennings (This permit expired on 1/26/92 with NO inspection)

92-39050-7 10/27/92 217 N Mathewson 5/8" of Hennings - (sealed off 50 ft south MH at edge of Hwy) 10+174.0

92-42617-7 11/18/92 217 N Mathewson N/C was sealed off earlier, installed 4" trap & hooked sewer back on line

CONSTRUCTION RECORD

SERVICE RECORD

STATION	ELEVATION		Depth	MANHOLE	4-INCH "Y" BRANCHES		No. of Permit		House Number		DATE OF PERMITS	
	Ground	Grade			EAST	WEST	North West	South East	North West	South East	North West	South East
				20+57 (G.H.)	20+52.7			To Ken				
					20+24	20+17	#1420	#4	347	346	11-2-26	1-3-29
					19+98	19+92		#1147	Mathewson	Cleveland		9-5-22
					19+69	19+65				Cleveland		
				19+26.0	19+39	19+37						
	109.40	108.00	1.40		19+20		#60				3-10-16	
					19+07.0	19+04.5						
19	109.44	107.94	1.50									
					18+81.2	18+78.7			329R	330G	5-3-02	10-30-75
					18+56.0	18+53.5	#270	#799	Mathewson	Cleveland	6-6-12	1-17-10
					18+30.5	18+28.0	#172	#205	Mathewson	Mathewson	9-3-07	4-16-48
					18+05.0	18+02.5	#1		Cleveland	Mathewson	2-1-09	4-9-10
18	110.75	107.69	3.06									
					17+79.7	17+77.2	#144				10-2-68	
					17+54.5	17+52.0	#25				7-6-08	
					17+28.8	17+26.3					12-1-77	1-24-72
					17+03.3	17+00.8					3-14-07	
17	111.22	107.44	3.78									
					16+75.7	16+73.2					4-12-76	5-18-14
					16+49.8	16+47.3						
					16+24.5	16+22.0						
16	110.87	107.19	3.68		15+99.6	15+97.1	#171	#507	Mathewson	2ND	9-3-07	6-17-26
					15+65.3	15+74.2						
15	110.30	106.94	3.36									
					14+81.5	14+79.0						
					14+48.0	14+45.5	#88	#60	Record	Washington School SE. cor. Cleveland	4-30-07	5-7-06
					14+22.5	14+20.0		#92				3-20-07
					13+96.5	13+94.3						10-7-77
					13+51.0	13+71.0						
					13+46.5	13+44.0						
					13+21.1	13+18.6						
13	110.65	106.44	4.21									
					12+95.0	12+92.5						
					12+70.0	12+67.5						
					12+44.0	12+41.5						
12	110.82	106.19	4.63		12+19.0	12+16.5						
					11+93.7	11+91.2						
					11+71.5	11+69.0						
					11+45.7	11+43.2						
11	110.54	105.94	4.60	11+24.0								
					11+19.5	11+17.0	#825	17542	Mathewson	318 N 300 Cleveland	11-10-17	12-30-86 Al Henning
					10+98.7	10+96.2						
					10+73.5	10+71.0						
					10+48.5	10+46.0						
					10+23.5	10+21.0						
10	109.50	105.69	3.81									
					9+98.3	9+95.9						
					9+72.9	9+70.4						
					9+47.8	9+45.4						
	109.57	105.45	4.12	9+05.4	9+22.6	9+20.2						
9	109.59	105.44	4.15									
					8+41.6	8+39.5						
8	109.42	105.19	4.23									

2002-01881 7/9/02 205 Mathewson - Dutchmans Drain - 4" SCH 40 - install cleanout, repaired 6' in middle of line 4" SCH 40

18884
 N.C. 5917 (240-42 Cleveland) 5-25-82 (Honey) M.H. 1351.0
 5146 - (240 N. Cleveland) 2-1-82 13+51.0 E. (40.25) Del Honey
 N.C. 8131 - 230-4N Cleveland - 5-12-83 - Del Honey - (139.154/13+51.0) (12+13.0)
 N.C. 8132 - 230-8N Cleveland - 5-12-83 - Del Honey - (89.105/13+51.0) (12+61.9)
 N.C. #00339 321 Mathewson 5-19-80 (Leeper) OH: 17+92.1 S. 43 (top 17+49.1)
 SO C42444 - 210 Cleveland - 11-27-73 - Al Henning (10+05.4)
 SO C42253 - 216 Cleveland - 4-29-75 - Byer - Al Henning (12+36)
 SO C38007 - 216 Cleveland - 3/30/73 - Al Henning (10+64)
 SO C36357 - 248 Cleveland - 12-14-72 - Al Henning
 SO C36359 - 250 Cleveland - 12-14-72
 SO C36357 - 244 Cleveland - 12-14-72
 C22333 - 237 Mathewson - 12-23-70 - Al Henning (12+59)
 C19925 - 318 Cleveland Seal off - 7-8-70 Al Henning

1414 E. 2nd - Tap - 50' N. of 15+65
 #2244 - Tap - 352 Cleveland - 7-6-42 - Stollenberger
 #1244 - Tap - 248 Cleveland - 1-11-47 - C.L. Brodie C36357-12-11-72
 #4688 - Tap - rear of 352 Cleveland - 5-17-51 - Joe McDonald
 #6230 - Wye - 233 Mathewson - 8-20-53 - Scotty Clark Pibg.
 #11881 - at bus stop (241 Mathewson) Frederick Pibg 11-19-59 (19+35) Henning
 N.C. C31058 - 312 N Cleveland with well (16+22) 5-20-72
 SO - C66470 - 230 Cleveland - 5-20-70 - Al Henning
 SO - C64518
 C7125-6 - 324 N. Cleveland - 5-21-79 (17+25.6)
 Tap C 7125-7 (326 N. Cleveland) 5-21-79 (18.21)
 #00647 313 Mathewson 6-28-80 (15+65.3) (14+65.3)
 #00648 319 Mathewson 6-28-80 (15+65.3) (17+49.2)