

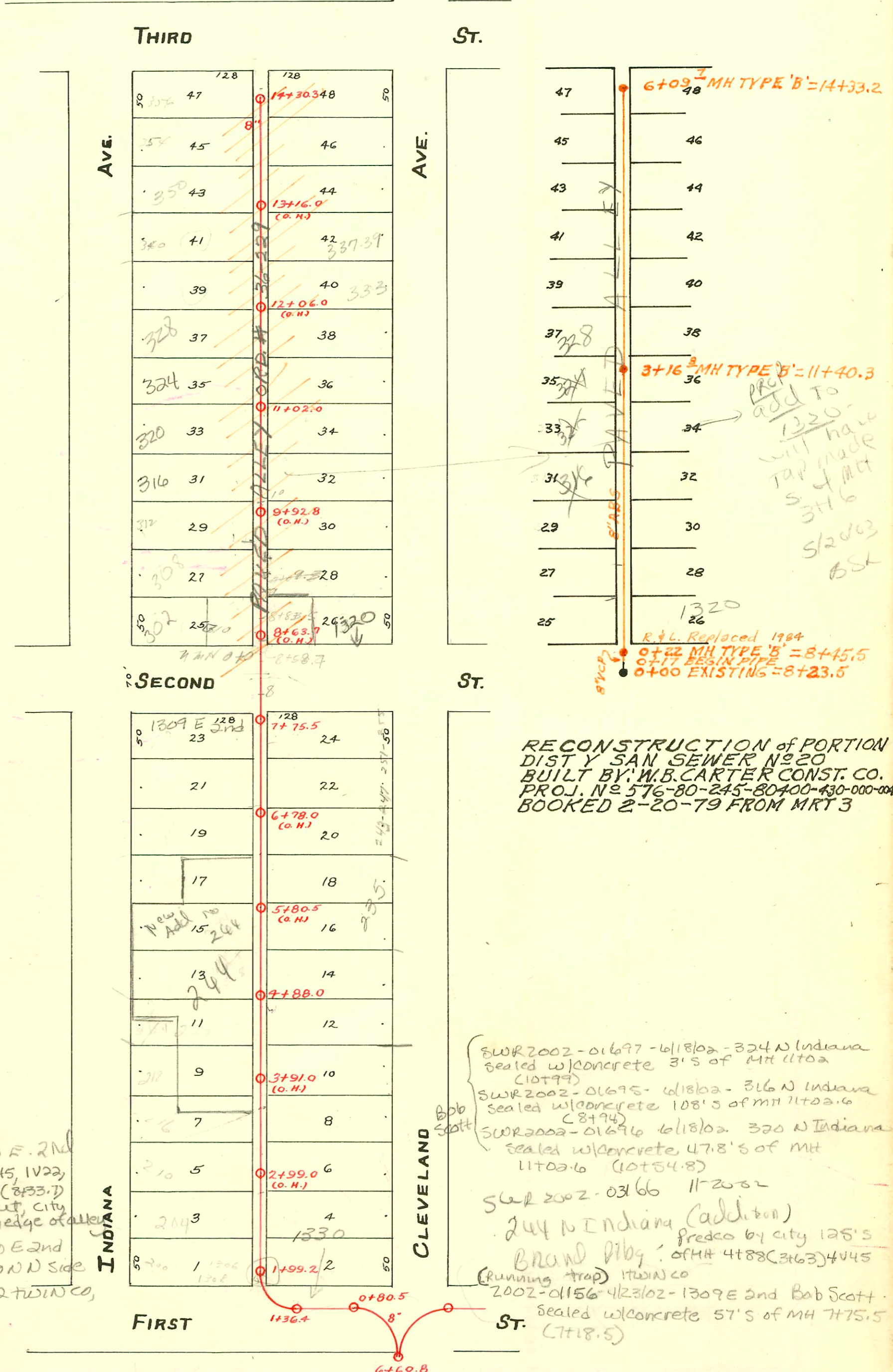
CLEVELAND LATERAL WEST

S.S. No. 2-1900 - Dist. Y- S.S. No. 20-1920

1=100

Plat 9-51

TRAP AREA



RECONSTRUCTION of PORTION
 DIST Y SAN SEWER NO 20
 BUILT BY: W.B. CARTER CONST. CO.
 PROJ. NO 576-80-245-80400-430-000-004
 BOOKED 2-20-79 FROM MRT 3

SWR 2002-01697-618102-324 N Indiana
 sealed w/ concrete 31'S of MH 1102
 (10+99)
 SWR 2002-01695-618102-316 N Indiana
 sealed w/ concrete 108'S of MH 1102.6
 (8+94)
 SWR 2002-01696-618102-320 N Indiana
 sealed w/ concrete 47.8'S of MH
 1102.6 (10+54.8)
 SWR 2002-03166 11-20-82
 244 N Indiana (addition)
 precast by city 125'S
 BRAND PIPING of MH 4+88(3+63)4V45
 (Running trap) 170W CO
 2002-01156-423102-1309 E 2nd Bob Scott
 sealed w/ concrete 57'S of MH 7+75.5
 (7+18.5)

2003-01674 6/26/03-1320 E. 2nd
 (New Bldg) A+A Mech: 1V45, 1V22,
 4" Preco 25'S of MH 8+58.7(8+33.7)
 shallow - concrete alley cut, city
 trap - trap inside bldg. bldg on edge of alley
 2003-01408 - 5/27/03-1320 E 2nd
 A+A Mech - alley cut - MH on N side
 of 2nd - 6x4 Red, New trap, 2 twin CO,
 1H45, 4V45

24241-11-7-87 (246 N. Indiana) - Henning (7+06.5)
 # 26776-12-8-90 235 N. Cleveland - N.C (6+24.5 trap)

92-45561-7 12-23-92 328 N. Indiana - Tim Lubbers - 52' N of MH, 6' Clay
 Edge of alley. Paved alley (3+68.8)

CONSTRUCTION RECORD

SERVICE RECORD

STATION	ELEVATION		Depth	MANHOLE	4-INCH "Y" BRANCHES		No. of Permit		House Number		DATE OF PERMITS	
	Ground	Grade			EAST	WEST	North West	South East	North West	South East	North West	South East
	110.46	107.59	2.9	14+33.2	14+27.5							
	110.41	108.40	2.01	14+30.3	14+23.9							
14	110.36	108.34	2.02		14+06.5	14+06.5	#162		1413 E			4-14-15
					14+03.5	14+04.0	#311		353 N. Cleveland			12-19-08
					13+92.1	13+86.2	#112					3-22-15
					13+88.7	13+64.5	#3609					6-17-65
					13+63.7	13+61.2	#57					6-17-65
13	110.21	108.09	2.12		13+17.5	13+17.5	#3610		354 Indiana			6-20-01
					13+14.1	13+15.5	#57		355 Indiana			4-14-06
					13+01.5	12+89.5	#3562		337 Cleveland			9-12-06
					12+88.9	12+86.7	#100					9-16-78
					12+61.5	12+59.0	#21					2-27-06
					12+36.9	12+34.4	#489		333 Cleveland			12-26-02
					12+27.5	12+27.5						2-6-08
					12+11.8	12+09.3						
12	110.08	107.84	2.24		11+86.7	11+84.2	#3443		331 Cleveland			4-11-80
					11+81.5	11+81.5	#231					4-12-02
					11+61.3	11+59.0	#40					11-5-06
	111.03	107.30	3.7	11+40.3	11+37.5	11+37.5	#309		324 Indiana			3-17-08
					11+36.5	11+34.0						4-8-02
					11+11.3	11+08.8						
11	109.86	107.59	2.27	11+02.0	10+92.5	10+92.5	#5		317 SP Cleveland			7-5-78
					10+83.5	10+80.6						1-16-03
					10+58.5	10+56.0	#198					3-3-04
					10+33.5	10+31.0	#198					3-3-04
10	109.72	107.34	2.38		10+10.4	10+05.5	#244		313 SP Cleveland			8-30-73
					9+75.5	9+81.6	#538					3-31-11
					9+59.3	9+56.8						9-9-14
					9+34.3	9+31.8	#64					1-23-61
9	110.57	107.09	3.48		9+06.9	9+03.0	#174					5-9-05
					8+82.8	8+81.0						12-30-03
8	109.47	106.84	2.63	8+45.5	8+58.7	8+56.2	#215		235 Indiana			4-7-04
					7+75.5	7+58.9	#160		245 Indiana			4-28-03
					7+33.5	7+31.0	#25					8-19-07
7	111.17	106.59	4.58		7+08.3	7+05.8	#25		245 Indiana			3-17-05
					6+83.8	6+81.3	#203					8-26-01
					6+76.0	6+58.6						1-30-01
					6+36.1	6+33.6						
6	110.73	106.34	4.39		6+10.8	6+08.3	#274		239 Cleveland			1-30-08
					5+85.5	5+83.0	#233					6-16-04
					5+60.5	5+58.0	#390					10-3-00
					5+35.3	5+32.8	#388					8-15-01
5	109.33	106.09	3.24		5+10.3	5+08.0	#388					8-13-01
					4+88.0	4+85.5	#27					8-13-01
					4+63.1	4+60.6	#27					3-21-05
					4+38.1	4+35.6						10-14-80
4	110.04	105.84	5.20		4+12.5	4+10.0	#671					7-22-71
					3+86.5	3+84.0	#333					10-28-09
					3+60.7	3+58.2	#56					6-5-09
					3+35.5	3+33.0	#339					4-2-08
3	110.69	105.59	5.10		3+10.3	3+07.8	#463					6-7-02
					2+85.3	2+82.8						9-20-04
						2+57.0						11-5-02
					2+49.2	2+31.7	#317					12-14-70
2	110.46	105.34	5.12		2+21.2	2+07.0	#492					9-29-00
					1+99.2	1+99.2						12-14-70
1	109.01	105.09	3.92	1+36.4	1+36.4	1+36.4						9-4-03
0	108.85	104.84	4.01	0+80.5	0+80.5	0+80.5						10-28-41

70 C69270-312 Cleveland - 11-7-78 (4159)
 C69271-312 Cleveland - 11-7-78 (4159)
 C69272-312 Cleveland - 11-7-78 (4159)
 C69273-312 Cleveland - 11-7-78 (4159)
 C69274-312 Cleveland - 11-7-78 (4159)
 C69275-312 Cleveland - 11-7-78 (4159)
 C69276-312 Cleveland - 11-7-78 (4159)
 C69277-312 Cleveland - 11-7-78 (4159)
 C69278-312 Cleveland - 11-7-78 (4159)
 C69279-312 Cleveland - 11-7-78 (4159)
 C69280-312 Cleveland - 11-7-78 (4159)
 C69281-312 Cleveland - 11-7-78 (4159)
 C69282-312 Cleveland - 11-7-78 (4159)
 C69283-312 Cleveland - 11-7-78 (4159)
 C69284-312 Cleveland - 11-7-78 (4159)
 C69285-312 Cleveland - 11-7-78 (4159)
 C69286-312 Cleveland - 11-7-78 (4159)
 C69287-312 Cleveland - 11-7-78 (4159)
 C69288-312 Cleveland - 11-7-78 (4159)
 C69289-312 Cleveland - 11-7-78 (4159)
 C69290-312 Cleveland - 11-7-78 (4159)
 C69291-312 Cleveland - 11-7-78 (4159)
 C69292-312 Cleveland - 11-7-78 (4159)
 C69293-312 Cleveland - 11-7-78 (4159)
 C69294-312 Cleveland - 11-7-78 (4159)
 C69295-312 Cleveland - 11-7-78 (4159)
 C69296-312 Cleveland - 11-7-78 (4159)
 C69297-312 Cleveland - 11-7-78 (4159)
 C69298-312 Cleveland - 11-7-78 (4159)
 C69299-312 Cleveland - 11-7-78 (4159)
 C69300-312 Cleveland - 11-7-78 (4159)
 C69301-312 Cleveland - 11-7-78 (4159)
 C69302-312 Cleveland - 11-7-78 (4159)
 C69303-312 Cleveland - 11-7-78 (4159)
 C69304-312 Cleveland - 11-7-78 (4159)
 C69305-312 Cleveland - 11-7-78 (4159)
 C69306-312 Cleveland - 11-7-78 (4159)
 C69307-312 Cleveland - 11-7-78 (4159)
 C69308-312 Cleveland - 11-7-78 (4159)
 C69309-312 Cleveland - 11-7-78 (4159)
 C69310-312 Cleveland - 11-7-78 (4159)
 C69311-312 Cleveland - 11-7-78 (4159)
 C69312-312 Cleveland - 11-7-78 (4159)
 C69313-312 Cleveland - 11-7-78 (4159)
 C69314-312 Cleveland - 11-7-78 (4159)
 C69315-312 Cleveland - 11-7-78 (4159)
 C69316-312 Cleveland - 11-7-78 (4159)
 C69317-312 Cleveland - 11-7-78 (4159)
 C69318-312 Cleveland - 11-7-78 (4159)
 C69319-312 Cleveland - 11-7-78 (4159)
 C69320-312 Cleveland - 11-7-78 (4159)
 C69321-312 Cleveland - 11-7-78 (4159)
 C69322-312 Cleveland - 11-7-78 (4159)
 C69323-312 Cleveland - 11-7-78 (4159)
 C69324-312 Cleveland - 11-7-78 (4159)
 C69325-312 Cleveland - 11-7-78 (4159)
 C69326-312 Cleveland - 11-7-78 (4159)
 C69327-312 Cleveland - 11-7-78 (4159)
 C69328-312 Cleveland - 11-7-78 (4159)
 C69329-312 Cleveland - 11-7-78 (4159)
 C69330-312 Cleveland - 11-7-78 (4159)
 C69331-312 Cleveland - 11-7-78 (4159)
 C69332-312 Cleveland - 11-7-78 (4159)
 C69333-312 Cleveland - 11-7-78 (4159)
 C69334-312 Cleveland - 11-7-78 (4159)
 C69335-312 Cleveland - 11-7-78 (4159)
 C69336-312 Cleveland - 11-7-78 (4159)
 C69337-312 Cleveland - 11-7-78 (4159)
 C69338-312 Cleveland - 11-7-78 (4159)
 C69339-312 Cleveland - 11-7-78 (4159)
 C69340-312 Cleveland - 11-7-78 (4159)
 C69341-312 Cleveland - 11-7-78 (4159)
 C69342-312 Cleveland - 11-7-78 (4159)
 C69343-312 Cleveland - 11-7-78 (4159)
 C69344-312 Cleveland - 11-7-78 (4159)
 C69345-312 Cleveland - 11-7-78 (4159)
 C69346-312 Cleveland - 11-7-78 (4159)
 C69347-312 Cleveland - 11-7-78 (4159)
 C69348-312 Cleveland - 11-7-78 (4159)
 C69349-312 Cleveland - 11-7-78 (4159)
 C69350-312 Cleveland - 11-7-78 (4159)
 C69351-312 Cleveland - 11-7-78 (4159)
 C69352-312 Cleveland - 11-7-78 (4159)
 C69353-312 Cleveland - 11-7-78 (4159)
 C69354-312 Cleveland - 11-7-78 (4159)
 C69355-312 Cleveland - 11-7-78 (4159)
 C69356-312 Cleveland - 11-7-78 (4159)
 C69357-312 Cleveland - 11-7-78 (4159)
 C69358-312 Cleveland - 11-7-78 (4159)
 C69359-312 Cleveland - 11-7-78 (4159)
 C69360-312 Cleveland - 11-7-78 (4159)
 C69361-312 Cleveland - 11-7-78 (4159)
 C69362-312 Cleveland - 11-7-78 (4159)
 C69363-312 Cleveland - 11-7-78 (4159)
 C69364-312 Cleveland - 11-7-78 (4159)
 C69365-312 Cleveland - 11-7-78 (4159)
 C69366-312 Cleveland - 11-7-78 (4159)
 C69367-312 Cleveland - 11-7-78 (4159)
 C69368-312 Cleveland - 11-7-78 (4159)
 C69369-312 Cleveland - 11-7-78 (4159)
 C69370-312 Cleveland - 11-7-78 (4159)
 C69371-312 Cleveland - 11-7-78 (4159)
 C69372-312 Cleveland - 11-7-78 (4159)
 C69373-312 Cleveland - 11-7-78 (4159)
 C69374-312 Cleveland - 11-7-78 (4159)
 C69375-312 Cleveland - 11-7-78 (4159)
 C69376-312 Cleveland - 11-7-78 (4159)
 C69377-312 Cleveland - 11-7-78 (4159)
 C69378-312 Cleveland - 11-7-78 (4159)
 C69379-312 Cleveland - 11-7-78 (4159)
 C69380-312 Cleveland - 11-7-78 (4159)
 C69381-312 Cleveland - 11-7-78 (4159)
 C69382-312 Cleveland - 11-7-78 (4159)
 C69383-312 Cleveland - 11-7-78 (4159)
 C69384-312 Cleveland - 11-7-78 (4159)
 C69385-312 Cleveland - 11-7-78 (4159)
 C69386-312 Cleveland - 11-7-78 (4159)
 C69387-312 Cleveland - 11-7-78 (4159)
 C69388-312 Cleveland - 11-7-78 (4159)
 C69389-312 Cleveland - 11-7-78 (4159)
 C69390-312 Cleveland - 11-7-78 (4159)
 C69391-312 Cleveland - 11-7-78 (4159)
 C69392-312 Cleveland - 11-7-78 (4159)
 C69393-312 Cleveland - 11-7-78 (4159)
 C69394-312 Cleveland - 11-7-78 (4159)
 C69395-312 Cleveland - 11-7-78 (4159)
 C69396-312 Cleveland - 11-7-78 (4159)
 C69397-312 Cleveland - 11-7-78 (4159)
 C69398-312 Cleveland - 11-7-78 (4159)
 C69399-312 Cleveland - 11-7-78 (4159)
 C69400-312 Cleveland - 11-7-78 (4159)
 C69401-312 Cleveland - 11-7-78 (4159)
 C69402-312 Cleveland - 11-7-78 (4159)
 C69403-312 Cleveland - 11-7-78 (4159)
 C69404-312 Cleveland - 11-7-78 (4159)
 C69405-312 Cleveland - 11-7-78 (4159)
 C69406-312 Cleveland - 11-7-78 (4159)
 C69407-312 Cleveland - 11-7-78 (4159)
 C69408-312 Cleveland - 11-7-78 (4159)
 C69409-312 Cleveland - 11-7-78 (4159)
 C69410-312 Cleveland - 11-7-78 (4159)
 C69411-312 Cleveland - 11-7-78 (4159)
 C69412-312 Cleveland - 11-7-78 (4159)
 C69413-312 Cleveland - 11-7-78 (4159)
 C69414-312 Cleveland - 11-7-78 (4159)
 C69415-312 Cleveland - 11-7-78 (4159)
 C69416-312 Cleveland - 11-7-78 (4159)
 C69417-312 Cleveland - 11-7-78 (4159)
 C69418-312 Cleveland - 11-7-78 (4159)
 C69419-312 Cleveland - 11-7-78 (4159)
 C69420-312 Cleveland - 11-7-78 (4159)
 C69421-312 Cleveland - 11-7-78 (4159)
 C69422-312 Cleveland - 11-7-78 (4159)
 C69423-312 Cleveland - 11-7-78 (4159)
 C69424-312 Cleveland - 11-7-78 (4159)
 C69425-312 Cleveland - 11-7-78 (4159)
 C69426-312 Cleveland - 11-7-78 (4159)
 C69427-312 Cleveland - 11-7-78 (4159)
 C69428-312 Cleveland - 11-7-78 (4159)
 C69429-312 Cleveland - 11-7-78 (4159)
 C69430-312 Cleveland - 11-7-78 (4159)
 C69431-312 Cleveland - 11-7-78 (4159)
 C69432-312 Cleveland - 11-7-78 (4159)
 C69433-312 Cleveland - 11-7-78 (4159)
 C69434-312 Cleveland - 11-7-78 (4159)
 C69435-312 Cleveland - 11-7-78 (4159)
 C69436-312 Cleveland - 11-7-78 (4159)
 C69437-312 Cleveland - 11-7-78 (4159)
 C69438-312 Cleveland - 11-7-78 (4159)
 C69439-312 Cleveland - 11-7-78 (4159)
 C69440-312 Cleveland - 11-7-78 (4159)
 C69441-312 Cleveland - 11-7-78 (4159)
 C69442-312 Cleveland - 11-7-78 (4159)
 C69443-312 Cleveland - 11-7-78 (4159)
 C69444-312 Cleveland - 11-7-78 (4159)
 C69445-312 Cleveland - 11-7-78 (4159)
 C69446-312 Cleveland - 11-7-78 (4159)
 C69447-312 Cleveland - 11-7-78 (4159)
 C69448-312 Cleveland - 11-7-78 (4159)
 C69449-312 Cleveland - 11-7-78 (4159)
 C69450-312 Cleveland - 11-7-78 (4159)
 C69451-312 Cleveland - 11-7-78 (4159)
 C69452-312 Cleveland - 11-7-78 (4159)
 C69453-312 Cleveland - 11-7-78 (4159)
 C69454-312 Cleveland - 11-7-78 (4159)
 C69455-312 Cleveland - 11-7-78 (4159)
 C69456-312 Cleveland - 11-7-78 (4159)
 C69457-312 Cleveland - 11-7-78 (4159)
 C69458-312 Cleveland - 11-7-78 (4159)
 C69459-312 Cleveland - 11-7-78 (4159)
 C69460-312 Cleveland - 11-7-78 (4159)
 C69461-312 Cleveland - 11-7-78 (4159)
 C69462-312 Cleveland - 11-7-78 (4159)
 C6946