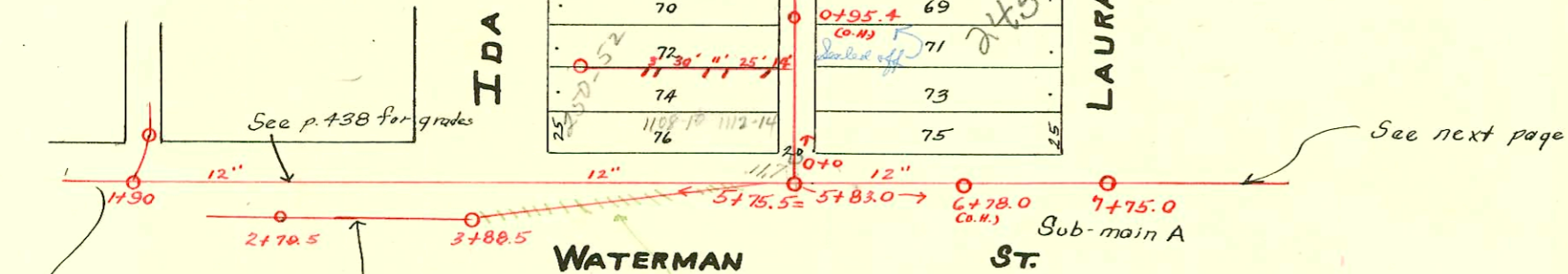
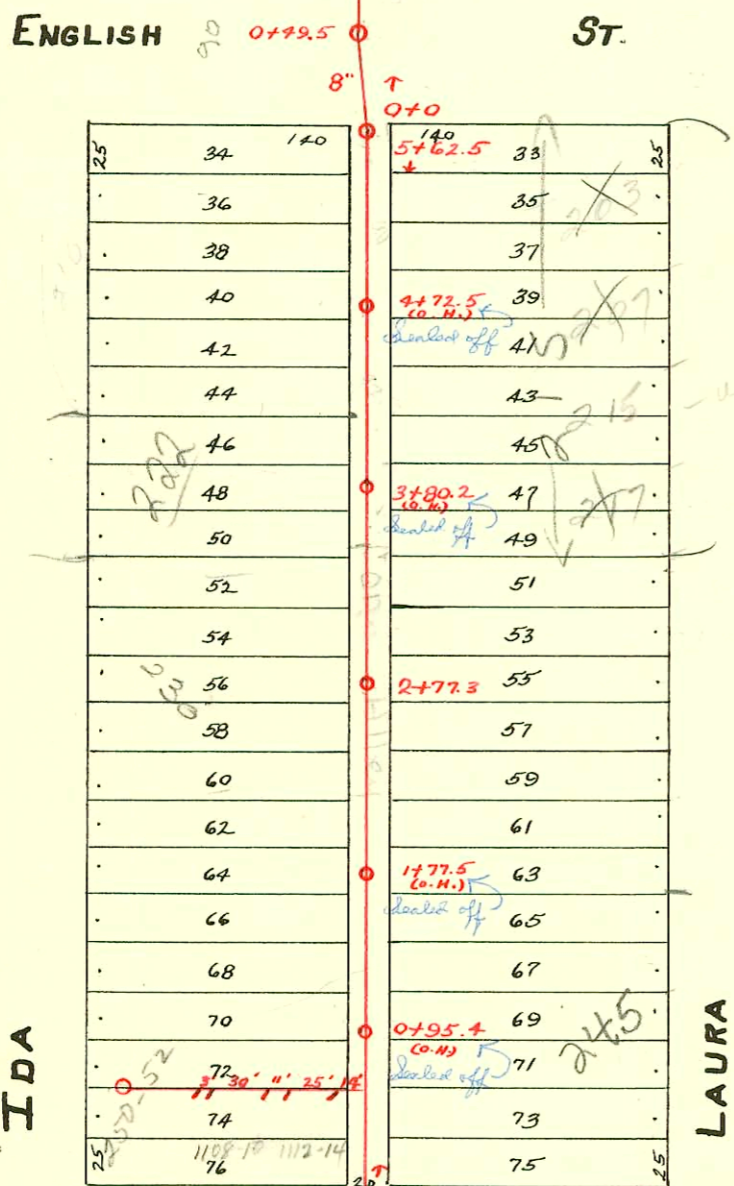
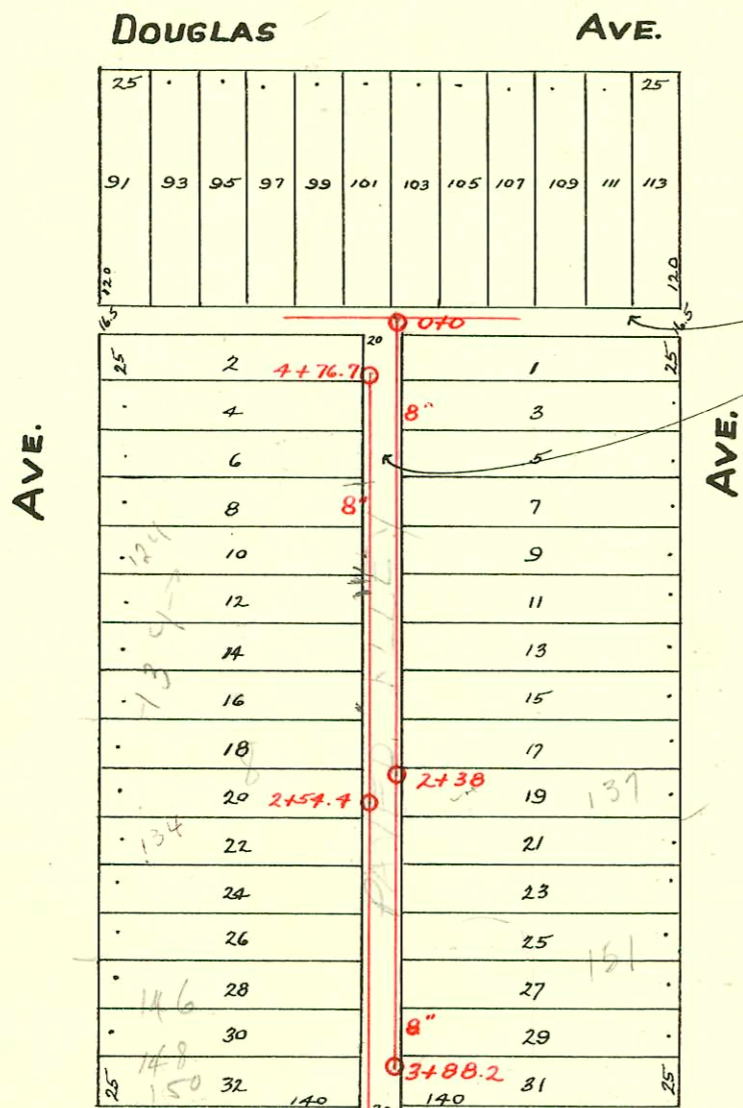


LAT. 1 NORTH - S.S. No. 4 - 1904.
S.S. No. 20 - DIST. Y - 1920.



Line From M.H. 3+88.5 in Ida to alley E. of Ida
Killed when S.W.S. 420 was built (1927). New line extended
East from 3+88.5 on S.S. Waterman to catch lines from South.

CONSTRUCTION RECORD

SERVICE RECORD

| STATION | ELEVATION | | Depth | MANHOLE | 4-INCH "Y" BRANCHES | | No. of Permit | | House Number | | DATE OF PERMITS | |
|---|-----------|--------|--------|---------|---------------------|----------------------------|---------------|------------|--------------|------------|-----------------|------------|
| | Ground | Grade | | | North West | South East | North West | South East | North West | South East | North West | South East |
| LINE ON WEST SIDE OF ALLEY BET. IDA & LAURA, From ENGLISH No. | 0+0 | 109.14 | 103.07 | 6.07 | 0+0 | 1+06.5 | 57 | 15013 | | 150 Ida | | 12-4-61 |
| | | | | | 0+49.5 | 1+31.4 | 81.9 | 1218 | | 150 Ida | | 8-17-59 |
| | | | | | | 1+47 | 17.5 | connected | | 146 Ida | | 8-17-59 |
| | 1+0 | 109.07 | 103.17 | 5.90 | | 1+69 | 119.5 | connected | | 138 Ida | | |
| | | | | | | 1+98.6 | 149.1 | connected | | | | |
| | | | | | | 2+22.8 | | connected | | | | 2-2-70 |
| | 2+0 | 109.17 | 103.27 | 5.90 | | 2+49.6 | | connected | | | | |
| | | | | | 2+54.4 | 2+66.5 | | connected | | | | |
| | | | | | | 2+72 | | connected | | | | |
| | 3+0 | 108.75 | 103.37 | 5.38 | | 3+01 | | connected | | | | |
| | | | | | 3+25.5 | | | | | | | |
| | | | | | 3+50.7 | | | 9512110-7 | | 134 Ida | | 8-7-95 |
| | | | | | 3+72.6 | | connected | | | | | |
| | | | | | 3+97.8 | | | | | | | |
| 4+0 | 108.42 | 103.47 | 4.95 | | 4+23.8 | | | #2850 | | 120 Ida | | 3-20-46 |
| | | | | | 4+49.7 | | | | | | | |
| 4+76.7 | 108.67 | 103.55 | 5.07 | 4+76.7 | 4+75.3 | | | | | | | |
| LINE ON EAST SIDE OF ALLEY BET. IDA & LAURA, FROM ENGLISH No. | 0+0 | 108.70 | 100.50 | 8.20 | 0+0 | | | | | | | |
| | | | | | | 0+22 | | | | | | |
| | | | | | | 0+52 | | | | | | |
| | | | | | | 0+76.5 | | #1528 | | 119 Laura | | 5-8-44 |
| | 1+0 | 108.37 | 100.60 | 7.77 | | 1+04.3 | | #1399 | | 123 Laura | | 2-17-44 |
| | | | | | | 1+31.8 | | | | | | |
| | | | | | | 1+54.7 | | | | | | |
| | | | | | | 1+83 | | connected | | | | |
| | 2+0 | 108.46 | 100.70 | 7.76 | | 2+04.3 | | | | | | |
| | | | | | 2+38 | 2+30 | | | | | | |
| | | | | | 2+58 | | connected | | 127 Laura | | 1-12-60 | |
| | | | | | 2+82.8 | | | | | | | |
| 3+0 | 108.99 | 100.80 | 8.19 | | 3+09.7 | | | 92-161359 | | 141 Laura | | 7-29-92 |
| | | | | | 3+32.4 | | | | | | | |
| | | | | | 3+38.5 | | | #6203 | | 147 Laura | | 8-18-53 |
| | | | | | 3+61 | | | | | | | |
| 3+88.2 | 109.16 | 100.89 | 8.27 | 3+88.2 | 3+80.7 | | | connected | | | | |
| LINE IN No. SIDE OF WATERMAN, WASHINGTON E. TO ALLEY E. OF IDA. | 0+0 | 107.43 | 100.62 | 6.81 | 0+0 | | | | | | | |
| | 1+0 | 107.10 | 100.72 | 6.38 | | | | | | | | |
| | 2+0 | 107.24 | 100.82 | 6.42 | 1+90 | | | | | | | |
| | 3+0 | 106.90 | 100.92 | 5.98 | | | | | | | | |
| | 4+0 | 107.14 | 101.02 | 6.12 | | | | | | | | |
| | 5+0 | 107.24 | 101.12 | 6.12 | 5+75.5 | | | | | | | |
| | 5+75.5 | 107.24 | 101.20 | 6.04 | 5+83 | for line on E. in Waterman | | | | | | |
| Easement from Permit #916 9-29-21 - West from Y 0+68.5 | 0 | | | | 0+0 | 0+21.0 | 0+18.5 | | | | | |
| | | | | | | 0+43.5 | | | | | | |
| | | | | | | 0+46.0 | 0+66.0 | | | | | |
| | | | | | | 0+68.5 | 0+90.5 | #916 | | 250 Ida | | 9-29-21 |
| | | | | | | 0+93.0 | | | | | | |
| | 1 | | | | | 1+18.2 | 1+15.8 | #486 | #7083 | 248 Ida | 233 Laura | 11-30-82 |
| | | | | | | 1+48.0 | 1+45.5 | #1886 | #1336 | 242 Ida | | 6-9-24 |
| | | | | | | 1+73.0 | 1+70.5 | #94 | | 242 Ida | | 1-6-49 |
| | | | | | | 1+98.0 | 1+95.5 | #1407 | | 250 Ida | | 9-15-41 |
| | | | | | | 2+20.2 | 2+17.7 | #4236 | | 228 Ida | | 9-24-23 |
| | 2 | | | | | 2+50.0 | 2+47.5 | | | | | 3-30-51 |
| | | | | | 2+77.3 | 2+72.5 | 2+70.0 | #665 | #901 | 228 Ida | NO Record | 7-29-21 |
| | | | | | | 2+96.3 | 2+93.8 | #735 | | 226 Ida | | 7-27-21 |
| | | | | | | 3+20.5 | 3+18.0 | #1541 | | 226 Ida | | 8-18-21 |
| | 3 | | | | | 3+45.5 | 3+43.0 | #1007 | | | | 11-14-22 |
| | | | | | | 3+70.5 | 3+68.0 | #71 | #148 | 218 Ida | 211 Laura | 8-18-60 |
| | | | | | | 3+95.2 | 3+92.7 | | | | | 10-22-21 |
| | | | | | | 4+20.5 | 4+18.0 | | | | | 2-25-63 |
| | 4 | | | | | 4+43.0 | 4+40.5 | | | | | 3-19-14 |
| | | | | | | 4+68.0 | 4+65.5 | #713 | #459 | 208 Ida | 208 Laura | 1-12-15 |
| | | | | | 4+93.0 | 4+90.5 | | | | | 2-13-63 | |
| | | | | | 5+17.5 | 5+15.0 | | | | | 2-28-08 | |
| 5 | | | | | 5+42.5 | 5+40.0 | #696 | | 208 Ida | 208 Laura | 9-24-59 | |
| | | | | | | | | | | | 8-11-21 | |
| | | | | | | | | | | | 7-26-09 | |
| | | | | | | | | | | | 11-6-81 | |
| | | | | | | | | | | | 2-29-12 | |
| | | | | | | | | | | | 8-26-77 | |
| | | | | | | | | | | | 11-8-09 | |
| | | | | | | | | | | | 8-3-08 | |

0+14
0+39
0+50
0+80
0+83

#11841 210 Ida 8-22-84 Kirkland (2nd 5' 60") section (E. Waterman) (6+11.0)
 #6013-Tap - 210 Ida - 7-30-53 - Pray Bros. - sub off - C19878 - 210 Ida (front house) 6-30-70 (4+59.5)
 #6648 - Used old conn. - 140 Ida - 10-7-53 - Kendall P/Bq.
 C30613 - 222 Ida - 2-24-72 - John & Stewart - Tap (1+26.3)
 C59522 - 233 Laura - tap 7-2-76 - Dean Norris (107.7' m)
 80C 62221-1114 E. English - 7-25-97 - K.M. Jewell - (3+63.2)
 9512110-7 8-7-95 126 S. Ida - slo clay tile line at sta. 3+65.7