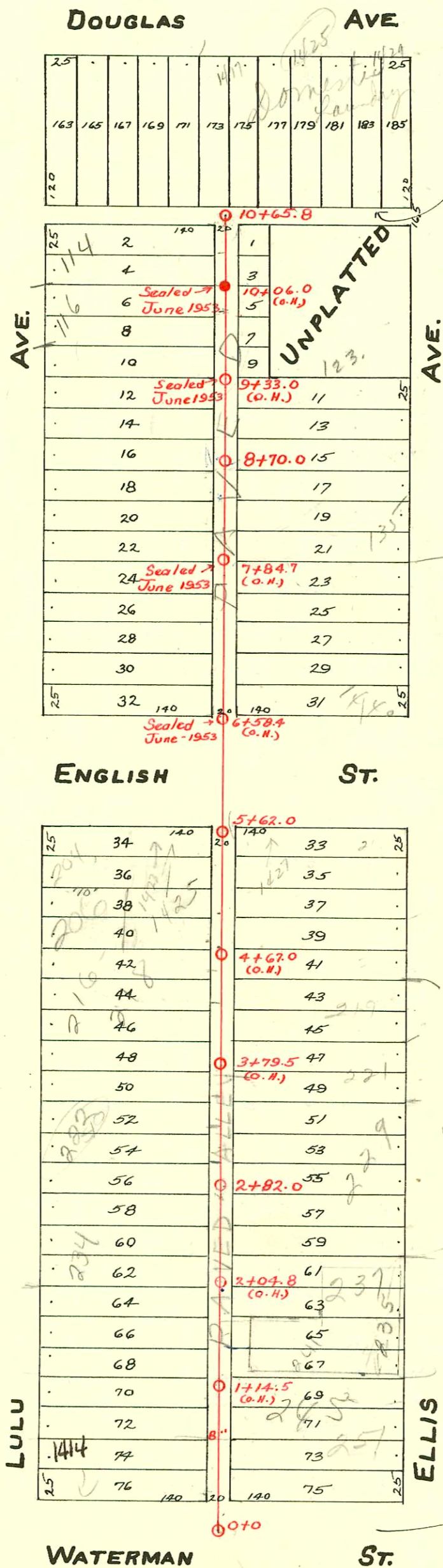


LAT. 4-NORTH
S.S.No. 4-DIST. Y.- S.S.No. 20-1920.

Plat 9-54



S.S. in this Alley Killed - See Page 208 - BK. 2 for new line

TRAP AREA

San. Sewer line in Waterman Killed - see P. 445 for new line.

#26521-11-13-90-116 S. Lulu - Boardman - New Conn (wye? 9+45.8)

CONSTRUCTION RECORD

SERVICE RECORD

STATION	ELEVATION		Depth	MANHOLE	4-INCH "Y" BRANCHES		No. of Permit		House Number		DATE OF PERMITS	
	Ground	Grade			North West	South East	North West	South East	North West	South East	North West	South East
0				0+0	0+19.0	0+17.0			248	N. W. Cor		
					0+43.5	0+41.5	#819	#106	Lulu		8-2-28	6-20-05
					0+71.0	0+69.0						
					0+99.0	0+97.0	#23750	#55	242	315 E.	8-15-89	3-18-12
1				1+50 ^e	1+24.0	1+22.0	#450	#28185	Lulu	Douglas	7-21-47	11-25-86
					1+57.5	1+49.5						
					1+74.0	1+72.0	#298				12-19-10	
					1+99.0	1+97.0	#222	#4436	231	Ellis	6-7-89	4-24-51
2					2+24.5	2+22.5					11-12-07	
					2+47.0	2+45.0	#1306	#75	230		?	5-9-90
					2+77.0	2+75.0						9-18-08
				2+82.0								5-8-07
3					3+02.5	3+00.5	#196	C46331	232	229 (addn.)	4-5-10	
					3+26.2	3+24.2	#228	#52			5-30-04	4-23-07
					3+52.0	3+50.0						5-13-04
					3+77.0	3+75.0	#710				11-28-79	9-24-17
						3+90.0						
4					4+00.0	4+26.0	#167				4-7-09	
					4+47.1	4+45.1	#341				11-3-15	
					4+71.8	4+69.8	#259				12-16-21	
					4+95.0	4+84.8	#86				4-2-10	3-12-73
5					5+20.2	5+30.0						9-10-07
					5+47.2	5+45.2						3-12-73
				5+62.0								3-3-06
6					6+63.8	6+61.8	#883		150	Lulu	1-19-45	
					6+88.8	6+86.8	#39	#2204		1628 E.	3-28-07	9-29-24
7					7+13.5	7+11.5	#167			English	6-1-18	6-27-04
					7+38.8	7+36.8						1-18-05
					7+64.3	7+62.3	#329	#5314	140	Ellis	9-9-04	5-25-53
					7+88.5	7+86.5	#213				4-22-09	
8					8+14.0	8+12.0	#627	C39004	150	Ellis	8-27-17	5-15-73
					8+39.5	8+37.5		#230				11-3-06
					8+64.7	8+62.7						
				8+70.0								
					8+88.3	8+86.3	#123				5-2-67	6-8-08
9					9+12.8	9+10.8	#835				4-14-19	10-12-71
					9+38.0	9+36.0						
					9+63.2	9+61.2	#236				6-1-78	11-8-06
					9+88.4	9+86.4	#974				10-14-21	
10					10+14.0	10+03.5		#243				5-21-04
					10+38.5	10+36.5	#2629				10-16-90	
					10+65.8		#193				10-9-05	

Grade on	0+0	106.28	98.33	7.95	0+0 = M.H. on #20 Main in Hydraulic
Line N.S.	1+0	106.40	98.43	7.97	
Waterman	2+0	106.72	98.53	8.19	
Hydraulic	3+0	106.79	98.63	8.16	1+86 = M.H. at Alley W. of Hydraulic
West.	4+0	106.84	98.73	8.11	
Newline	5+0	107.19	98.83	8.36	5+06 = M.H. W. of Fannie (now Greenwood)
built 1927	6+0	107.24	98.93	8.31	
	7+0	107.51	99.03	8.48	7+22 = M.H. at Ellis No.
	8+0	107.26	99.13	8.13	
	9+0	106.96	99.23	7.73	9+22 = M.H. at Alley W. of Ellis
	10+0	106.10	99.33	6.77	
	11+0	105.46	99.43	6.03	
	12+0	106.19	99.53	6.66	
	12+75	106.36	99.62	6.74	12+75 M.H. at Alley W. of Lulu.

Soe 68777-232 Lulu - 10-6-78. Al Henning (1+78)

July 3 65910-136 Lulu - A. Mary - 4-14-78 (7+98.3)

#158-5-23-40 Tap - 230 Lulu - (Rear) - Jim Haano.

#2279 - 245 Ellis - 6 on 8th wye - Raymonds (P189) Trailer - 9-11-56

#106094 Seal off - 1427 E. English - Kenneth Thompson - 8-1-66

C45098 #6098 - tap - 1427 E. English - Kenneth Thompson - 8-1-66 (5+23.6)

C10864 Seal off 219 Ellis 10-9-68 (3+94)

#24230 - 11-6-89 - 1414 E. Waterman vic (1+17.0 TAP)

#13297 - Lulu - H. - 229 Ellis - Kendall Kelly - 9-19-60

#16560 - Seal off - Daniel Williams - 1-10-63-1426 E. English

C374 C32183 - S.O. - 221 Ellis (3+43)

#2332 - 5/15/81 - 222 S. Lulu - Henning - (3+11)

#25293 - 5-9-90 - 229 S. Ellis - Brand - Rep. -