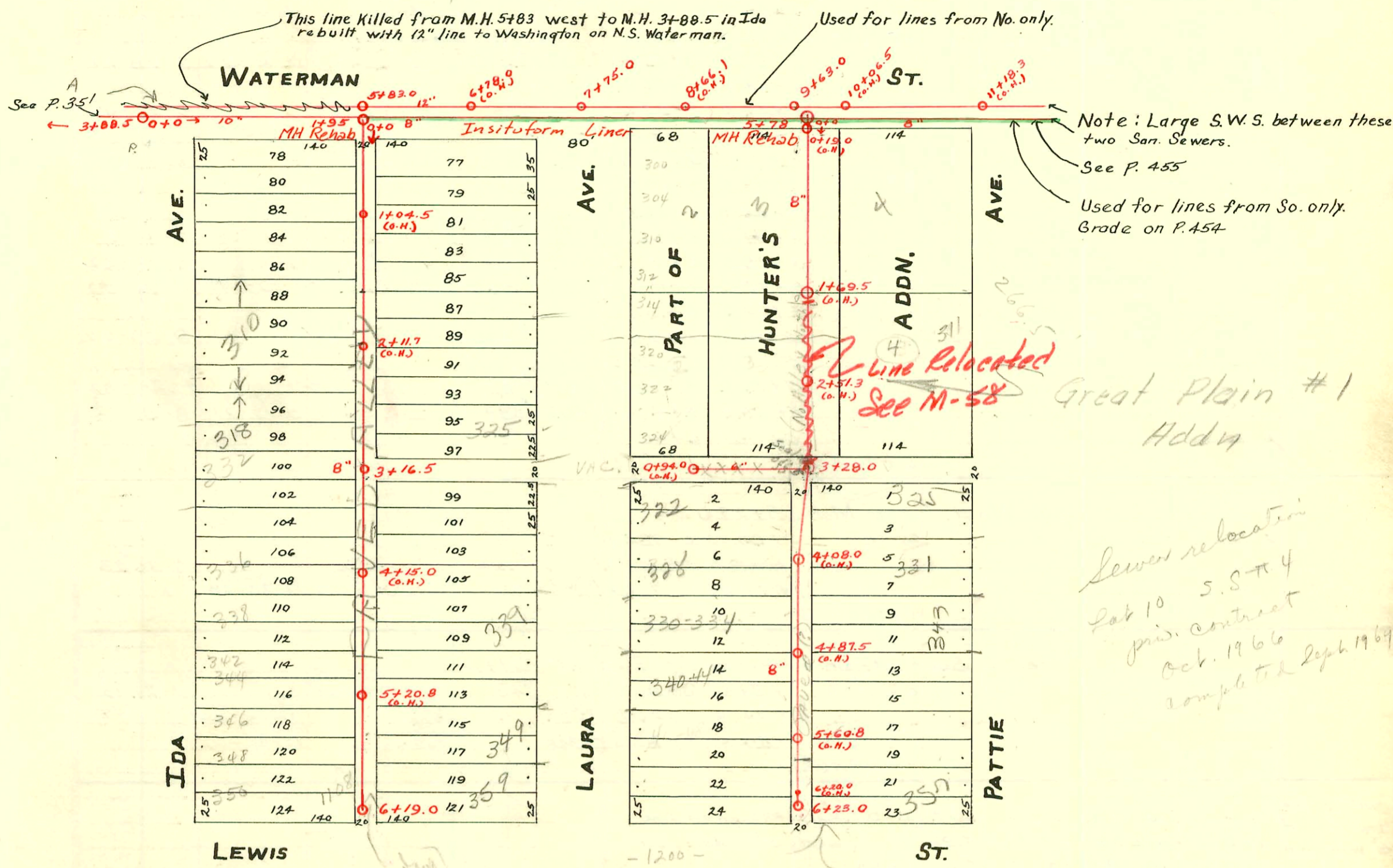


LAT. 9 FROM LEWIS ST. NORTH TO WATERMAN ST.  
LAT. 10 AND SPUR EAST AND WEST IN ALLEY No. OF LEWIS ST.  
S.S. No. 4- 1904- S.S. No. 20- DIST. Y- 1920.

1989 S.S. Reconst. Phs II  
468-82011 (725002)  
Built By Insituform Plains  
Booked 10-17-90 from Plan

Plat 9-54



TRAP AREA

2005-03190 - 357 S Pattie - slow concrete edge Bldg (David Lies. 1-4-06)  
S.W.P. 2004-00478 - 2/24/04 349 S. Laura (New shell Bldg) A Plus Plumbing =

91-24622-7 6/18/91 312 S Laura - Jerry Boardman (City top 212' S. of MH 4" SPR 35)

94-1892-7 - 3/11/04 - 310 S. Ida - Wheatland - Repairs - 4" PVC 90 - Replaced 715

CONSTRUCTION RECORD

SERVICE RECORD

STATION	ELEVATION		Depth	MANHOLE	4-INCH "Y" BRANCHES		No. of Permit		House Number		DATE OF PERMITS	
	Ground	Grade			North West	South East	North West	South East	North West	South East	North West	South East
<b>LATERAL 9</b>												
0				0+0	0+33.0	0+35.5			1105	301		
					0+60.0	0+57.5	#601	#673	Davidson	Laura	11-10-10	11-28-41
					0+82.5	0+85.0	#219	#1038	Ida	Laura	10-18-06	10-27-21
1					1+10.0	1+12.0			307	311		
					1+35.0	1+37.0	#309	#197	Ida	Laura	4-22-20	6-3-46
					1+59.6	1+61.6	#1278		Ida		10-9-19	
					1+84.6	1+86.6			310			
2					2+07.0	2+08.0	#452		310		5-25-21	
					2+35.0	2+37.0	#86		Ida	Laura	2-29-46	2-1-73
					2+59.8	2+61.8	#999		Ida		6-16-19	2-9-22
					2+82.5	2+84.5	#660		Goldman			12-8-13
3				3+16.5	3+07.0	3+09.0	#4821		Ida	Laura		12-22-65
					3+33.0	3+35.0	#58	#273	Ida	Laura	3-1-18	5-13-31
					3+58.0	3+60.0	#976		Ida	Laura		3-4-64
					3+81.0	3+83.0	#708		Ida		9-14-70	9-22-17
4					4+06.0	4+08.0	#692		Ida		12-16-10	
					4+33.6	4+35.6	#467		Ida	Laura	1-26-70	5-25-11
					4+58.5	4+60.5			Ida			
					4+83.5	4+85.5	#2546	#11768	Ida	Laura	11-17-24	8-15-84
5					5+08.5	5+10.5	#3351		Ida	Laura	3-1-24	5-29-84
					5+31.0	5+33.0	#52	#447	Ida		5-8-08	5-24-21
					5+53.8	5+55.8	#887	#530	Ida	Laura	7-24-22	6-20-21
					5+79.8	5+81.8			Ida			
6				6+19.0	6+03.0	6+05.0	#943	#903	Ida	Laura	8-3-22	9-28-21

LATERAL 10 and SPUR WEST in ALLEY

0				0+19.0 (G.H.)	0+22.5	0+24.5			304	301	1-17-89	5-18-14
					0+47.0	0+49.0	#305		Ida	Laura		
					0+73.5	0+76.0	#818	#864	Ida	Waterman	7-12-22	9-8-48
					0+98.5				Ida			
1					1+01.0	1+01.0	#46		310	301		3-21-08
					1+24.0	1+26.0	#2979	#444	Laura	Pattie	1-3-50	10-23-36
					1+49.5	1+52.0	#556	#47	Ida	Pattie	7-9-20	3-21-08
					1+75.5	1+78.0	#849	#48	Ida	Pattie	7-18-22	3-21-08
					2+00.5	2+03.0	#333		Ida		7-10-12	
					2+20.5	2+23.0	#104		Ida	Pattie		3-14-69
					2+41.5	2+39.0	#21		Ida		12-22-65	8-5-31
					2+72.0	2+74.5			Ida		5-27-12	
					2+95.0	2+97.5	#387		Ida		12-22-65	
3			31	3+28.0	3+39.0	3+41.5	#446		Ida	Pattie	8-22-12	7-2-17
					3+64.5	3+67.0	#2		Ida	Pattie	10-1-65	2-3-06
					3+90.0	3+92.5	#531		Ida	Pattie	9-18-14	3-30-70
4					4+14.0	4+16.5	#2346		Ida	Pattie	10-1-65	10-17-24
					4+40.0	4+42.5	#707	#440	Ida	Pattie	6-22-22	5-27-20
					4+65.0	4+67.5			Ida			
					4+90.0	4+92.5	#1233	#1583	Ida	Pattie	5-2-79	7-1-58-79
5					5+15.5	5+18.0	#459		Ida	Pattie	9-21-22	9-28-29
					5+40.5	5+43.0	#343	#591	Ida	Pattie	8-1-10	8-1-10
					5+66.0	5+68.5			Ida	Pattie	4-30-20	9-16-09
					5+91.0	5+93.5			Ida			
6				6+23.0	6+13.5	6+16.0	#66071		Ida	Pattie		4-25-78

Spur West from M.H. 3+28.0

0				0+94.0 (G.H.)	0+90.8M.							
					0+95.0 (G.H.) D.E.							

15068 - (325) Pattie 11-19-85 - 253.5' N - 253.5' N of M.H.  
 NC #1571 - 348 Ida Don Coleman 10-23-80 6+19.0 N (110.5' N - 5+08.5)  
 C12788 - 340-41 Laura 7-579 (5+18.3 Tap)  
 S.O. C50532 - (329) J. Pattie 7-25-75 - Charwick  
 C40774 - 359 Laura - Joe Matthews - 8-20-73  
 C32449 - 322-328 J Laura Jay Senter 5-24-72 (4+11.2)  
 C32231 - 322-328 J Laura Jay Senter 5-15-72 (3+51.5)  
 C17738 - 338 J Ida - Donald Thompson - 1-26-70 (4+38.5) - Seal off - 11-27-72 C#36089

#213-312 Ida - 4-21-31 Home Builders Plbg. Co. - Used old connection. #8916 seal off. 332 Ida - Seal off - 2-24-64  
 #188-Top - 309 Laura - 5-31-46 - Chester Davidson.  
 #1957 - 5-6-47 - Davidson Plbg.  
 #1005 - 6 on 8 wye - 301 Laura - Davidson Plbg. - 4-24-52  
 #2420 - 6 on 8 wye - 350 Ida - Shepherd Plbg. - 9-8-52  
 #556 - Used old conn. - 302 Laura - 8-4-47 - Davidson Plbg. Co.  
 #2094 - Top - 1221 E. Waterman - Cowan Plbg. Co. - 4-15-48  
 #1469 - Tap - 1108 E. Lewis - 11-10-48 - Howard Shepherd Plbg. Co. Seal off #C2392-1108 E Lewis 3/24/67  
 #267 - Used old conn. - 303 Pattie - 3-31-50 - Davidson Plbg. Co. Top - New Conn - C32173 - 331 Pattie Seal off Thompson 5-11-72  
 #3571 - Used old conn. - 312 Laura - 1-4-51 - Max Hinstaw.  
 B-9 - Seal off 311 Pattie - 8-12-63 Donald Williams  
 B790 Seal off 333 Laura - 2-6-64 - Headgatch Plbg. #20811-316 S. Ida - 4/17/85 - Davidson Plbg. Repair -