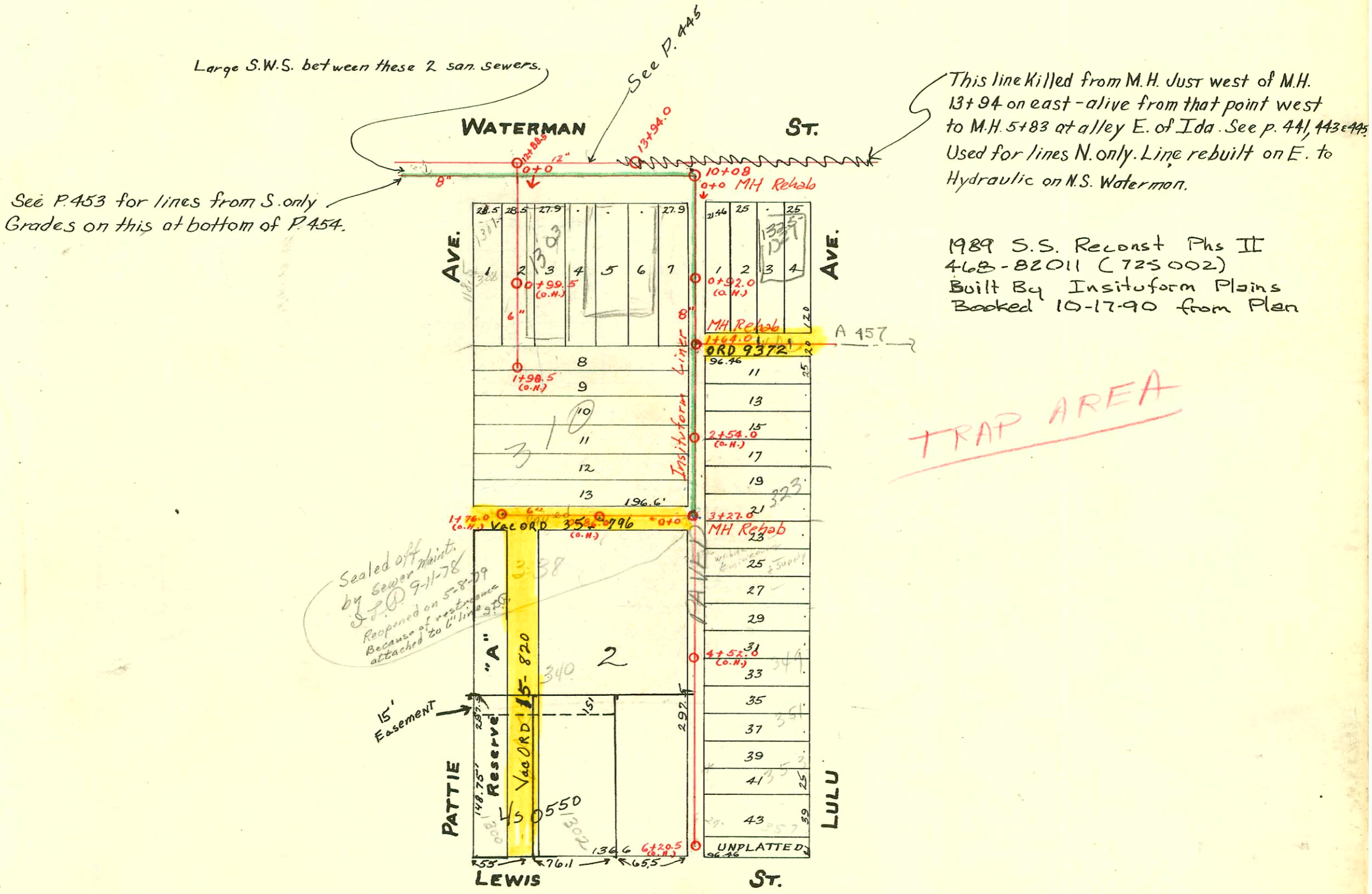


LAT. 11 FROM LEWIS ST. NORTH TO WATERMAN ST.
SPUR WEST IN ALLEY NORTH OF LEWIS STREET.
SPUR SOUTH FROM SUB-MAIN "A" ON WATERMAN ST.
S.S. No. 4 - 1904 - DIST. Y - S.S. No. 20 - 1920.

Plat 9-54



CONSTRUCTION RECORD

SERVICE RECORD

STATION	ELEVATION		Depth	MANHOLE	4-INCH "Y" BRANCHES		No. of Permit		House Number		DATE OF PERMITS	
	Ground	Grade			North West	South East	North West	South East	North West	South East	North West	South East
0				0+0	0+88.0			#2009	1307 E. 50 Waterman		1-29-74	
1				1+64.0	1+56.5 1+64.0	1+74.0		#17230 #1191	1309 E. 510 Waterman		7-28-52	
2				2+27.0	2+72.0 2+95.0	2+74.0 2+97.0		#13800 #1263	319 Pattie	315 Lulu	10-30-86	11-10-66
3				3+27.0	3+24.5 3+50.0	3+26.5 3+52.0		#1267 #877	324 Pattie	323 Lulu	9-21-66	11-1-77
4				4+19.5	4+64.0 4+94.0	4+21.5 4+96.0		#1224 #684	333 Lulu	339 Lulu	9-28-22	3-25-09
5				5+23.0	4+45.0 4+70.5	4+47.0 4+72.5		1009 #1586 #1272	340 Pattie	349 Lulu	5-22-58	5-30-74
6				6+20.5	4+96.0 5+23.0	4+98.0 5+25.0		#10482 #389	353 Lulu	357 Lulu	9-29-22	9-2-69

Spur West From M.H. 3+27.0

0				0+0	0+80.5	0+78.5						
1				1+76.0	1+76.0 S	1+72.0 N		#1132 #275	338 Pattie	336 Pattie	5-3-60	7-31-23

Lateral South from Waterman St. East of Pattie.

0				0+0	0+84.0	0+86.0		#140	1305 Waterman		5-26-78	1-27-10
1				1+98.5	1+44.8	1+46.8		#629 #1348	315 Pattie	310 Pattie	9-21-66	10-5-09

Grade on new line on S. side of Waterman from M.H. in Ida to M.H. 10+08 at alley W. of Lulu.	Station	Ground	Grade	Depth	MANHOLE
	0+0	107.17	101.0	6.17	0+0 = M.H. 3+885 on old line west, of Ida.
	1+0	107.06	101.0	5.96	
	2+0	106.87	101.2	5.67	1+95
	3+0	106.75	101.3	5.45	
	4+0	106.79	101.4	5.39	
	5+0	106.59	101.5	5.09	
	6+0	106.82	101.65	5.17	5+78
	7+0	106.48	101.75	4.73	
	8+0	106.23	101.85	4.38	
	9+0	106.00	101.95	4.05	
	10+0	106.04	102.05	3.99	
	10+08	106.06	102.06	4.00	10+08

2003-01274 5/9/03 1305 E Waterman - Attenning (1325+1327 1/2 duplex in corner) sealed w/concrete 54' W of MH + 5' N of main w/ claytile

96-78587-5-14-76 340 S. Pattie - Bldg Add -

#557 (1306 E Lewis) 6-12-80 Attenning (60' N of MH in Alley N. Pkg of Lewis) (may be tied into 1302 E Lewis)

C70051-333 Lulu - 1-4-79 - Brake - New Conn. (31 #5)

C66613 - 1303 E. Waterman - seal off - Attenning 5-2-78 (0498)

C56956 - 326 Pattie - seal off - Attenning - 7-25-76 (1425)

C18995 - 308 Pattie - seal off - Attenning 4-28-70 (15585) curb gutter - 4' ESE end line of Pattie

C15339 - 335 Lulu - seal off - Attenning 8-11-69 (3+71)

C15338 - 325 Lulu - seal off - Attenning 8-11-69 (together)

#185 - Tap - 1301 E. Waterman - 4-13-31 - L. W. Murphy

#1848 - Tap - 1309 E. Waterman - 12-14-44 - Simon's Plbg. Co.

#1558 - Tap - 1300 E. Lewis - 11-18-48 - Wayne Warren.

C68745 - 330 Pattie - Sade Plbg. - 10-5-78 - New Conn. (2+85)

#70804 - 317 Lulu - 3-22-79 - Attenning

Tap C74294 - 1305 E. Waterman - 6-12-79 - New Conn. (0+72.3)

93-21950-7 2/18/93 303S Lulu - Attenning 5/6 at 574 E of MH at 1107.0

See Permit