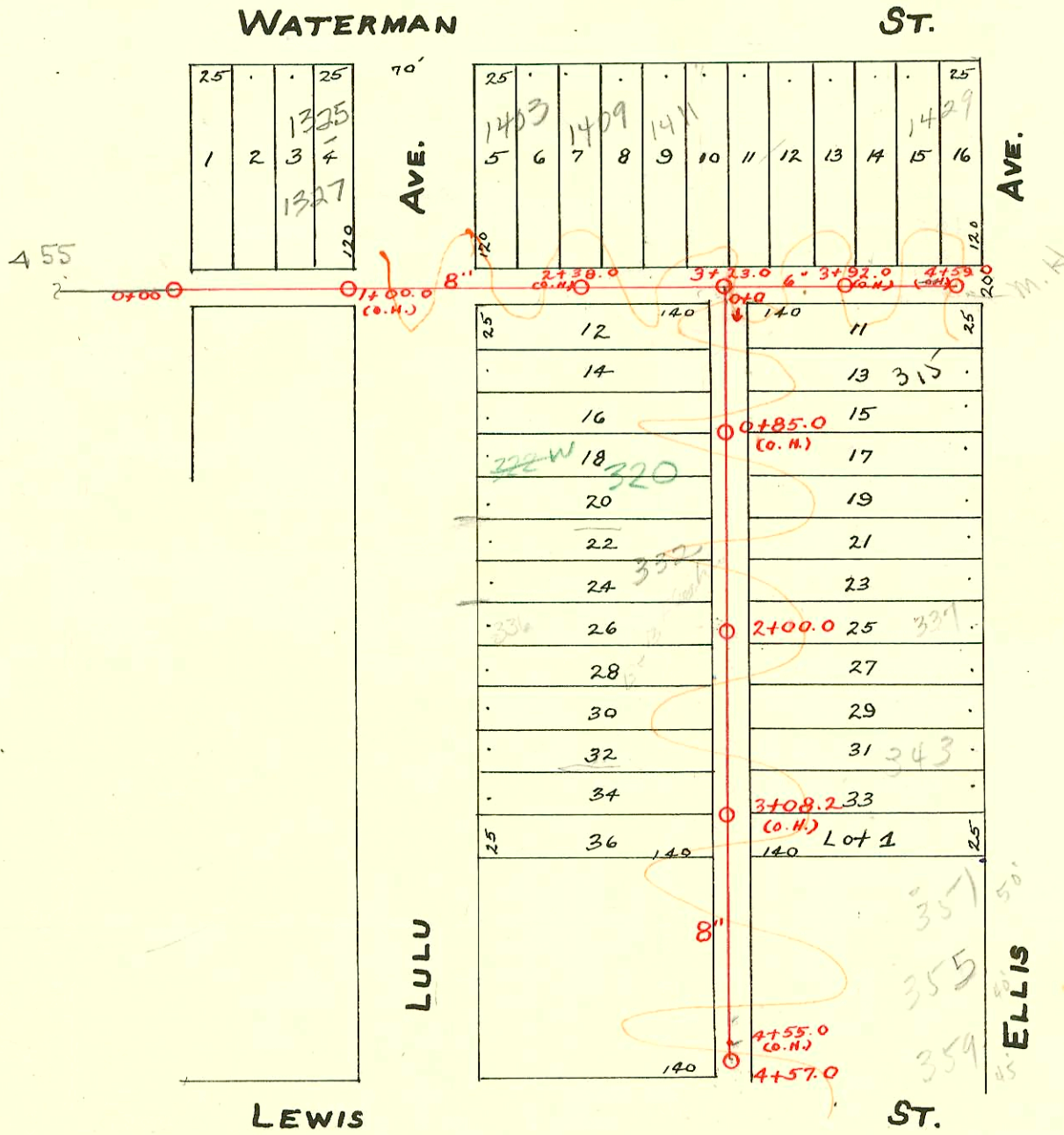


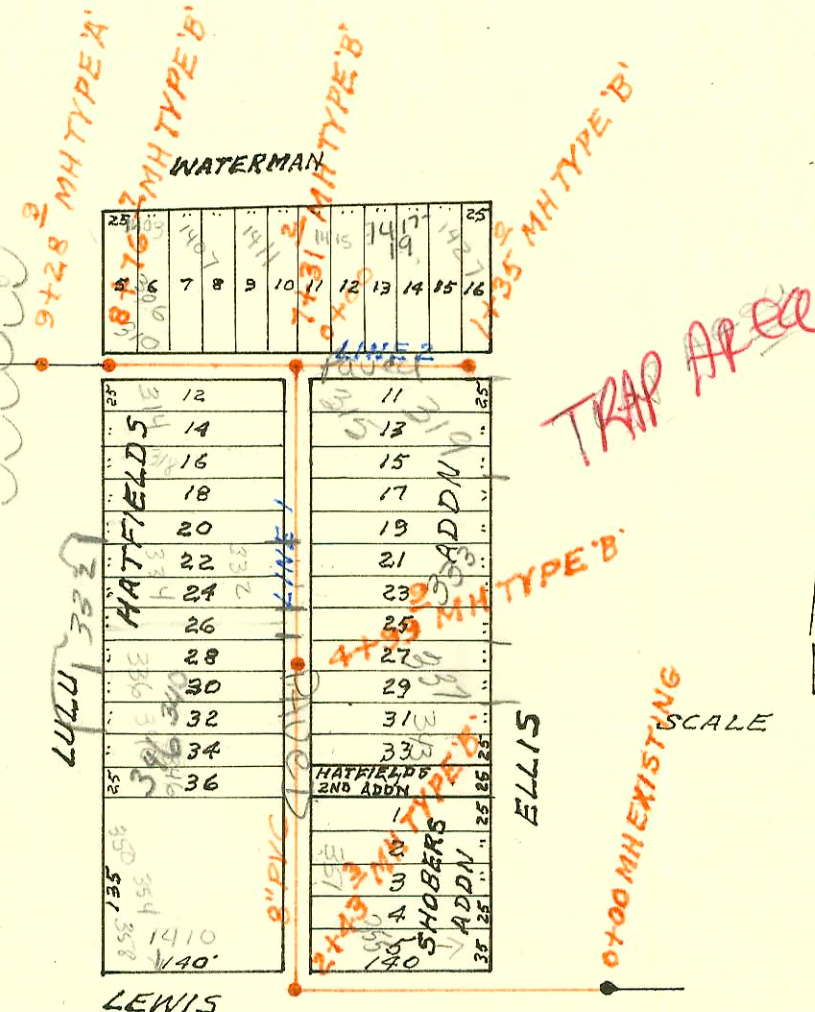
LAT. 12 IN ALLEY BET. LULU AND ELLIS FROM LEWIS STREET NORTH
SPURR EAST AND WEST IN ALLEY SOUTH OF WATERMAN BET. LULU & ELLIS
S.S. No. 4-1904 - Dist. Y- S.S. No. 20-1920.

Plat 9-54



TRAP AREA

- R/c - 1276 - 1409 waterman - 9-5-80 (eng. unapproved - did not get owner)
- R/c - 1275 - 1411 " " " " " " " " " " " "
- R/c - 1274 - 1415 " " " " " " " " " " " "
- R/c - 1273 - 1417 " " " " " " " " " " " "
- R/c - 1272 - 1419 " " " " " " " " " " " "
- R/c - 1271 - 1427 " " " " " " " " " " " "



RECON PART OF LATERAL 12 DISTRICT Y SS No 20
BUILT BY: MID STATES CONST. CO.
PROJ. No 542-80-80002-000-000-001
BOOKED 6-6-81 FROM SRL 2

96-46297 4-5-96 332 S Lulu (Bldg add - Betzen)

CONSTRUCTION RECORD

SERVICE RECORD

STATION	ELEVATION		Depth	MANHOLE	4-INCH "Y" BRANCHES		No. of Permit		House Number		DATE OF PERMITS	
	Ground	Grade			North West	South East	North West	South East	North West	South East	North West	South East
0					0+15.5		#257					1-8-04
					0+46.0							
					0+54.0		#138					3-30-19
					0+85.0		#225					5-9-63
1					1+24.0		#1542					4-21-17
					1+91.0		#C5874					1-13-67
						1+93.0		#3393				11-29-67
2					2+23.5		#300					12-5-52
					2+49.0		#329					4-16-21
					2+74.0							1-15-73
3					3+00.0		#16					4-26-20
					3+23.0		#4504					8-28-68
					3+34.5		#834					1-13-20
					3+60.5							4-15-74
						3+82.5						9-13-21
4					3+96		#1063					12-1-65
					4+06.5							7-11-19
					4+34.5							
					4+59.0(0.1)							3-21-66

0					0+0	0+13.5	0+15.5	#396	#1522	314	311 S	7-6-10	11-13-22
						0+38.5	0+40.5		#38649	315 S	Ellis		5-1-73
						0+62.5	0+64.5	#3544		318	Lulu	12-16-52	
						0+88.0	0+90.0		#1222	320	Ellis		2-5-69
1					1+13.0	1+15.0		#576		332-334	333	4-11-23	8-16-23
					1+38.8	1+40.8		#91	#1368	337	Ellis	3-3-13	10-17-22
					1+64.5	1+66.5		#15	#31379	336.50	Ellis	7-28-74	4-5-72
					1+90.5	1+92.5		#652	#1224	336	Ellis	1-13-11	
2					2+00.0	2+18.0	2+20.0	#1348	#1650	337	Ellis	10-20-09	9-15-19
					2+43.5	2+45.5		#212	#1163	340	Ellis		7-23-17
					2+69.0	2+71.0		#1539		343	Ellis	9-12-23	11-9-23
					2+98.0	3+00.0				345	Ellis	4-13-14	
3					3+24.0	3+26.0		#97	#3606	350	Ellis	4-3-78	1-30-23
					3+50.0	3+52.0				351	Ellis		5-9-39
					3+75.0	3+77.0						10-7-70	
4					4+01.0	4+03.0				358	Ellis	2-24-21	
					4+27.0	4+29.0							6-20-67
					4+53.0	4+55.0							11-21-21
					4+57.0								1-23-68

RECON LAT 12 DIST V SAN SEWER N^o 20

LINE 1	0+00	104.8	99.07	5.7	0+00								
	1+00	104.6	99.27	5.3									
	2+00	104.7	99.47	5.2									
		104.6	99.66	4.9	2+43.3								
					2+54.7								
	3+00	104.6	99.77	4.8	3+13.7								
					3+59								
	4+00	105.0	99.97	5.0	4+33.5								
		105.4	100.17	5.2	4+99.9								
	5+00	105.4	100.17	5.2	5+21.7								
					5+72.6								
	6+00	106.0	100.37	5.6	5+96.8								
					6+11.3								
	7+00	106.7	100.57	6.1	6+81.5								
		106.9	100.63	6.3									
			100.74	6.2	7+31.2								
	8+00	106.1	100.88	5.2	7+38								
		105.6	101.03	4.6	8+06.5								
		105.6	101.14	4.5	8+76.7								
					9+28.9								
LINE 2	0+00	106.8	100.74	6.1	0+00								
	1+00	106.5	100.94	5.6	1+11.3								
		106.4	101.01	5.4	1+35.0								

2p - C49589 - 332 S Lulu - 11-29-74 - C. J. Rutledge (2+13.8) (addr.)
 C40925 - 354 Lulu - 8/27/73 - James Braden
 Seal off C38022 - 354 Lulu - 4/2/73 - Al Henning (3+93)
 Seal off C21701 - 332 Lulu - 11-9-70 - Darrell Williams (2+30)
 #987 - Tap at 60' N of Sta. 4+57 - 10-17-21 #C2820 seal off - 355 Ellis - Emory Pibg. - 4-26-67
 #2804 - Top - 310 Lulu - 12-12-49 - Frederick Pibg. Co.
 #2414 - Top - 333 Ellis - 9-20-50 - Joe McDonald
 #7027 - G on 8 wye - 1415 E. Waterman - 12-9-55 - Brodie Pibg.
 #B2086 - Seal off - 343 Lulu - 10-1-66 - Al Henning (2+96)
 #C6441 - 2.01 (316) Lulu - 12-11-72 - Al Henning (2+96)
 5/0 #14366 (356 Lulu) 8-1-85 Henning - 18' S. of N. property line 68.5' W. of main
 #26802 - 12 26 40 - 1410 E. Waterman - Henning (60' N of MH 2+43.3)
 #26497 - 1-28-91 - 354 S. Lulu - Ron Provine - registered temp and city of Lulu - 21' inside city
 92-23603-9 8/25/92 332 S. Lulu - Nelsmith - City add. - 4" sch 40 (TOP 4+82.9)