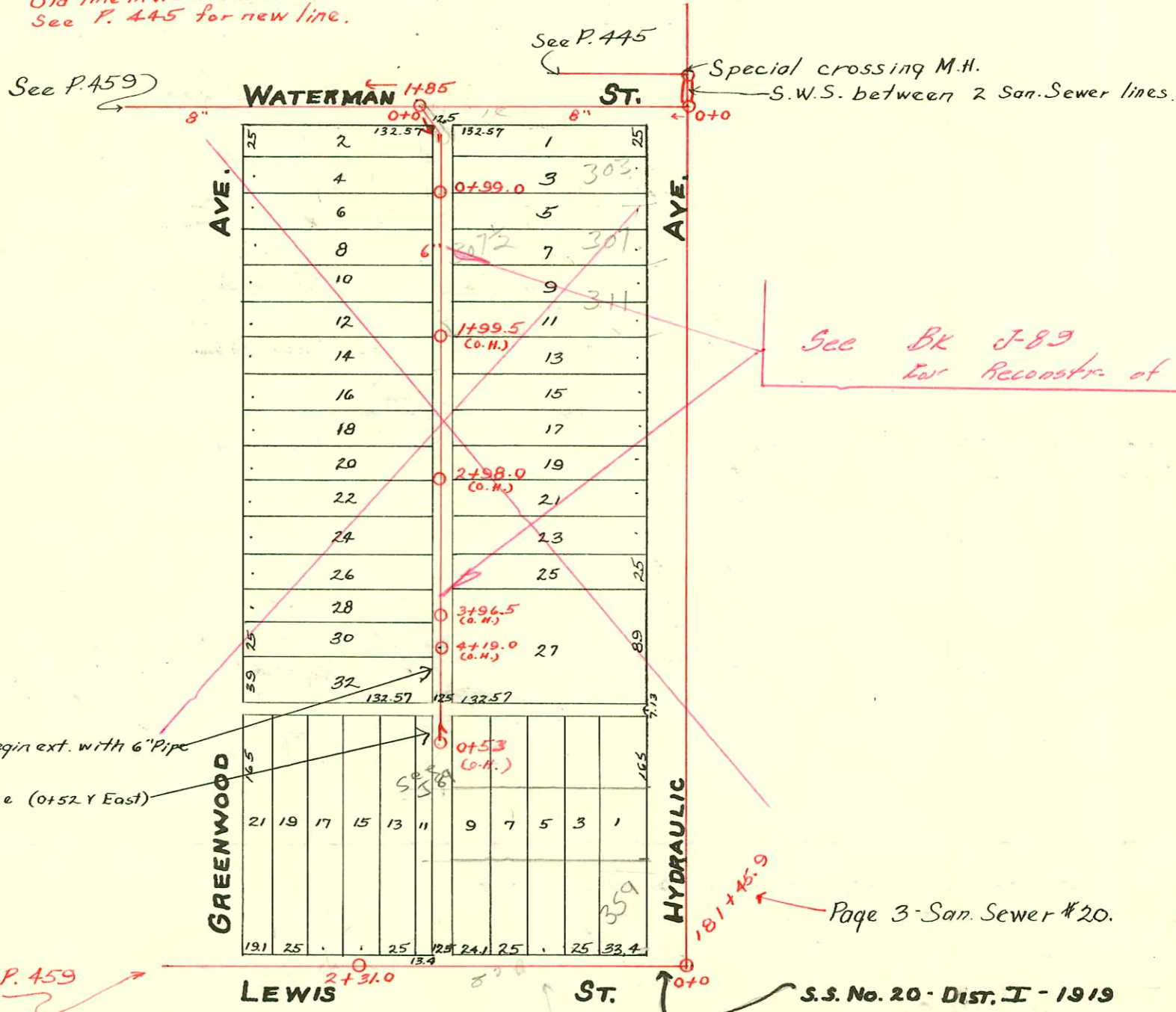


LAT. 14 FROM WATERMAN ST. SO. BET. GREENWOOD & HYDRAULIC
S.S. No. 4 - 1904 - Dist Y - S.S. No. 20 - 1920.

Plat 9-54

TRAP AREA

Old line in Waterman Killed - N. side.
See P. 445 for new line.



CONSTRUCTION RECORD						SERVICE RECORD						
STATION	ELEVATION		Depth	MANHOLE	4-INCH "Y" BRANCHES		No. of Permit		House Number		DATE OF PERMITS	
	Ground	Grade			North West	South East	North West	South East	North West	South East	North West	South East
0				0+0	0+54.5	0+56.5		#631				11-1-18
					0+81.0	0+83.0	#225		307 Greenwood		4-27-09	
				0+99.0								
1					1+08.0	1+10.0	#1020	#587	306 Greenwood		6-25-19	5-31-22
					1+35.0	1+37.0	#3874	#103	312 Greenwood	311 S. Hydraulic	7-17-41	2-25-14
					1+60.0	1+62.0						
					1+85.0	1+87.0	#372	#603	314 Greenwood	313 S. Hydraulic	7-3-13	9-22-09
2					2+11.0	2+13.0						
					2+37.5	2+39.5	#1225		318 Greenwood		9-15-19	
					2+66.0	2+68.0						
					2+92.0	2+94.0		#210		321 S. Hydraulic		4-22-13
3					3+18.0	3+20.0	#211		320 Record		3-24-19	
					3+44.5	3+46.5	#1024	#478	324 Greenwood	335 S. Hydraulic	6-26-19	7-12-17
					3+70.0	3+72.0						
4					4+01.0	4+03.0	#482	#1064	326 Greenwood	337 S. Hydraulic	5-29-11	11-1-21
				4+21.0 F.T.								
Lewis St. Lateral from Hydraulic Sta. 181+45.9												
0+0	105.29	98.60	6.69	0+0	0+56.0							2-22-99
					0+83.0							2-24-67
1	104.75	98.70	6.05		1+08.5		B1684		359 S. Hydraulic			7-22-64
					1+33.9		#857		355 S. Hydraulic			11-22-20
					1+61.6							
					1+87.7		#14894	#571	1608 S. Lewis			10-25-85
2	105.24	98.80	6.44		2+12.7		15366		1608 S. Lewis			4-19-23
					2+31.0	2+38.8	#15691	#533	350 S. Greenwood			2-7-86
					2+64.8							4-14-23
					2+90.0							
Line in S. Side of Waterman, Hydraulic West.	0+0	106.24	98.89	7.35	0+0	special Xing M.H. in Hydraulic						
	1+0	106.54	98.99	7.55								
	2+0	106.58	99.09	7.49	1+85							
	3+0	107.38	99.19	8.19								
	4+0	106.88	99.29	7.59								
	5+0	107.13	99.39	7.74								
	5+06	107.10	99.40	7.70	5+06							
Extension from o.H. 4-19.0 6"	0+00				Remove M.H.		12323 seal off	#7339	349 S. Hyd.			2-16-60
	0+53				0+53 (O.H.)		0+52		349 S. (Trailer) Hydraulic			1-30-52

#332-349 S. Hydraulic - 4-27-20 } #12321 seal off (69 ft. north of 2nd M.H. in new line - Bldg - 89) Kendall Bldg 2-16-60
 #382-351 S. Hydraulic - 5-15-20 } #12322 seal off (M.H. tap 181+45.9) line in hydraulic
 #7498 - Setting wye - 307 S. Hydraulic - 2-2-54
 Tap #527 - 342 Greenwood - 5-22-30 - O.W. Stinnett
 Private line - #528 - 346 Greenwood - 5-22-30 - O.W. Stinnett
 #7340 - Private line - 349 S. Hydraulic - Trailer - 1-30-52 - C.G. Coleman
 #5533 - Setting Wye - 307 S. Hydraulic - Hinshaw - 7-11-55
 #8133 - 4th Comp Wye - 311 S. Hydraulic - Reynolds Bldg 9-12-58 1476.5