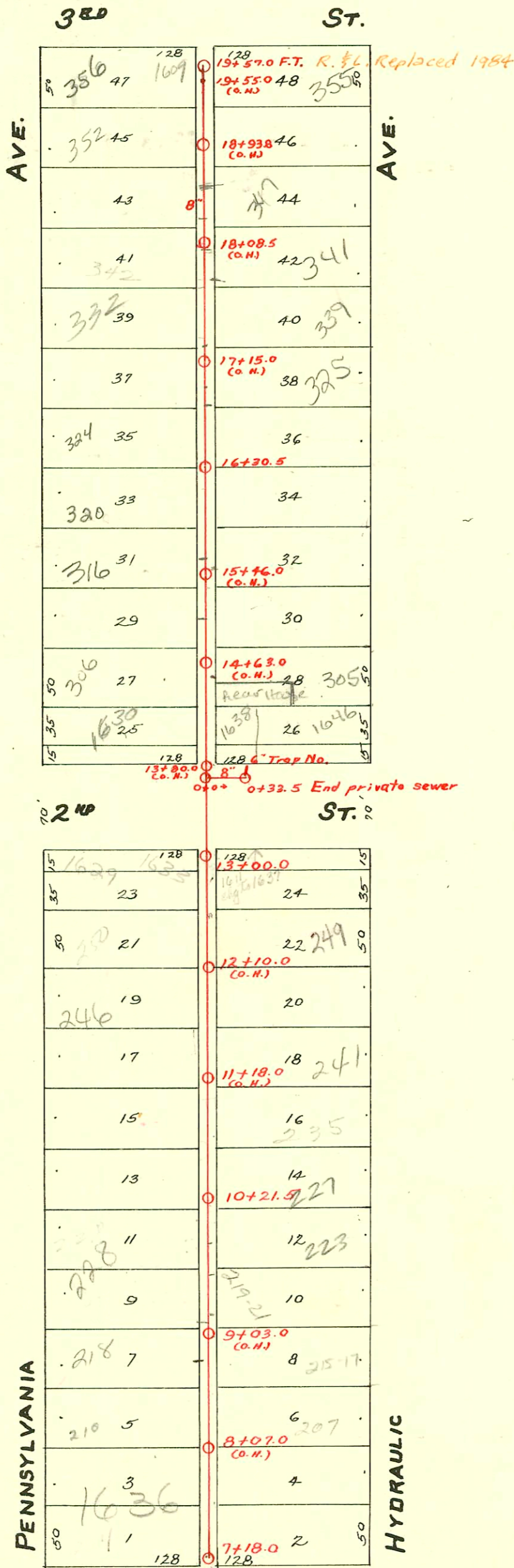


PART OF LAT. 18 FROM 1ST ST. No. TO 3RD ST. BET. PENNSYLVANIA & HYDRAULIC
 S.S. No. 4 - 1904 - Dist Y - S.S. No. 20 - 1920.

Plat 9-51



Trap Area
 1" = 100'

- SWR 2000-01526-6/14/00 351 N Hydraulic n/c
 SWR 2001-02740 10/21/01 341 N Hydraulic GP Pkg = 4" SCH 40 Predco Saddle 154.6' S of 19+57 (18+02.4) Trap 1045
- 2005-00001
 2000-01886-8/23/00-355 N Hydraulic Mcclung's - 4" SCH 40, Tied back to 6" clay^{4'} from main, 2 traps, 2 twin CO,
 2 Kickouts, 1 H22, 2 H45
- # 18632 - 7-2-87 347 N Hydraulic NO INSP TURNED IN
- # 19080 - 9-16-87 347 N Hydraulic - NK (18+54. wye)
- # 2014 - 4-6-88 1636 = 519ST STREET - (7+37)
- # 24540 - 1-3-90 356 N. Pennsylvania Henning Sealed 28' sy mt 19+57 (17+29)

CONSTRUCTION RECORD

SERVICE RECORD

STATION	ELEVATION		Depth	MANHOLE	4-INCH "Y" BRANCHES		No. of Permit		House Number		DATE OF PERMITS		
	Ground	Grade			North West	South East	North West	South East	North West	South East	North West	South East	
7				7+18.0	7+09.5 7+47.0 7+36.8 7+62.0 7+87.0	7+07.5 7+34.8 7+60.0 7+85.0	#3522 #2085 #7155 #3523 #168		1610-12 E. 1st 1636 5th 1638 E. 1610-12 E. 1st		5-22-41 6-7-86 11-3-71 2-14-08 5-22-41 3-25-10		
8					8+12.5 8+35.0 8+57.8 8+83.5	8+10.5 8+33.0 8+55.8 8+81.5	#120 #1450 #2485 #3542	#1318 #1450 C3542	210-11 Penn Leahy 214 215 N. 216 220 N. 219 N.	211 N. Hydraulic Hydraulic Hydraulic	2-22-60 5-31-06 10-2-23 12-7-06 4-18-07	9-6-23 10-2-23 10-17-72	
9					9+07.8 9+33.5 9+59.0 9+73.0 9+84.0 9+98.0	9+05.8 9+31.5 9+57.0 9+82.0	#139 #1317 #738 #1713 #696	#1317 #1713	220 220 222 225 N. 232 232	219 N. Hydraulic Hydraulic Hydraulic Hydraulic	3-22-17 10-7-66 4-14-37 2-10-19 12-5-73 1-13-19	3-3-51 9-6-23 6-7-68 2-10-19 12-9-29 1-13-19	
10				10+21.5	10+09.0 10+40.0 10+65.0 10+90.0	10+07.0 10+38.0 10+63.0 10+88.0	10211 #1400 #4661 #1919	#1714 #1400 C4661	232 232 540 240 241 N. 242 242 241 N. 241 N.	Hydraulic Hydraulic Hydraulic Hydraulic Hydraulic Hydraulic Hydraulic	2-14-84 12-5-73 12-28-23 12-15-24 12-15-24 10-24-04 8-30-23	12-9-29 9-24-23 8-29-67 12-28-23 11-21-64 8-25-22 5-9-21 7-23-19	
11					11+15.5 11+40.0 11+65.0 11+90.0	11+13.5 11+39.0 11+63.0 11+88.0	#1084 #2702 #378 #1292	#1084 #378 #1093	242 242 246 246	241 N. Hydraulic Hydraulic Hydraulic	12-24-91 12-15-24 10-24-04 8-30-23	4-21-64 8-25-22 5-9-21 7-23-19	
12					12+15.0 12+40.0 12+64.5 12+90.0	12+13.0 12+38.0 12+62.5 12+88.0	#1001 #755 #141	#13473 #220	246 246 246 246	241 N. Hydraulic Hydraulic Hydraulic	1-30-84 10-16-17 2-14-84 4-5-07	6-26-74 4-13-10	
13				13+00.0	13+76.0	13+74.0							
14					14+04.5 14+30.0 14+55.0 14+80.5 15+03.0 15+28.0 15+53.0 15+78.5	14+02.5 14+28.0 14+53.0 14+78.5 15+01.0 15+26.0 15+51.0 15+76.5	#617 #866 #84 #565 #885 #149 #233	#62 #102 #149	1620 E. 305 N. 306 312 N. 310 310 316	Hydraulic Hydraulic Hydraulic Hydraulic Hydraulic Hydraulic	12-3-58 11-19-10 6-5-23 5-20-07 10-15-13 5-8-50 5-1-18	8-25-57 2-14-11 3-9-21	
15					16+02.0 16+21.0 16+51.0 16+83.5	16+00.0 16+22.0 16+49.0 16+81.5 16+99.0	#705 #188 #703 #447	#188 #703	320 S10 321 324 325 N18	Hydraulic Hydraulic Hydraulic	8-14-11 11-9-09	8-2-68 8-23-06 8-7-17 3-30-23	
16				16+30.5	16+51.0 16+83.5	16+49.0 16+81.5	#703 #447	#703	324 325 N18	Hydraulic Hydraulic	11-9-09	8-7-17 3-30-23	
17					17+01.0 17+29.5 17+55.0 17+80.0	17+27.5 17+53.0 17+78.0	#467 #1854 #489	#467	328 339 339	Hydraulic Hydraulic	6-4-20 8-13-24		
18					18+05.8 18+31.0 18+56.0 18+81.0	18+03.8 18+29.0 18+54.0 18+79.0	#31 #886 #312	#31	338 346 347 355 N	Hydraulic Hydraulic Hydraulic	3-20-07 7-24-22 5-26-09	7-31-05 9-16-17 7-31-05	
19					19+08.5 19+28.5 19+51.0	19+06.5 19+26.5 19+49.0	#201 #651	#651	355 355 1609 E.	Hydraulic Hydraulic	9-9-08	11-28-10	

Private Sanitary Sewer in Book M-12 page 28
 0+0
 0+33.5

4954 245 N Hydraulic 12-22-81 Henry 1114 10+21.5
 65419-250 Pennsylvania-316-N-Al Henning (12+75)
 #5037-Setting wye-220 Pennsylvania-5-1-53-Jerson Plbg.
 #4020-Top-303 N.Hydraulic-2-4-53-J.Douglas Lansdowne
 #678-Tapped at 7+28.5-1638 E. 1st-1-11-38-Carl Carr.
 #255-Tapped at 1610 E. 2nd-Baker Plbg-6-19-47
 #4895-Private line conn.-1646-48 E. 2nd-6-7-51-J.Douglas Lansdowne
 7233 600 wye 1633 2nd J.Douglas Lansdowne 6-24-54
 9717 600 wye-207 N Hydraulic-Baker 8-6-58
 B1868-Set off-237 N Hydraulic-Charles H. Carr 8-31-64
 #5147-277 N Hydraulic (C) 13-00-20 Al Henning 2-1-84 (12+46.5) 5013