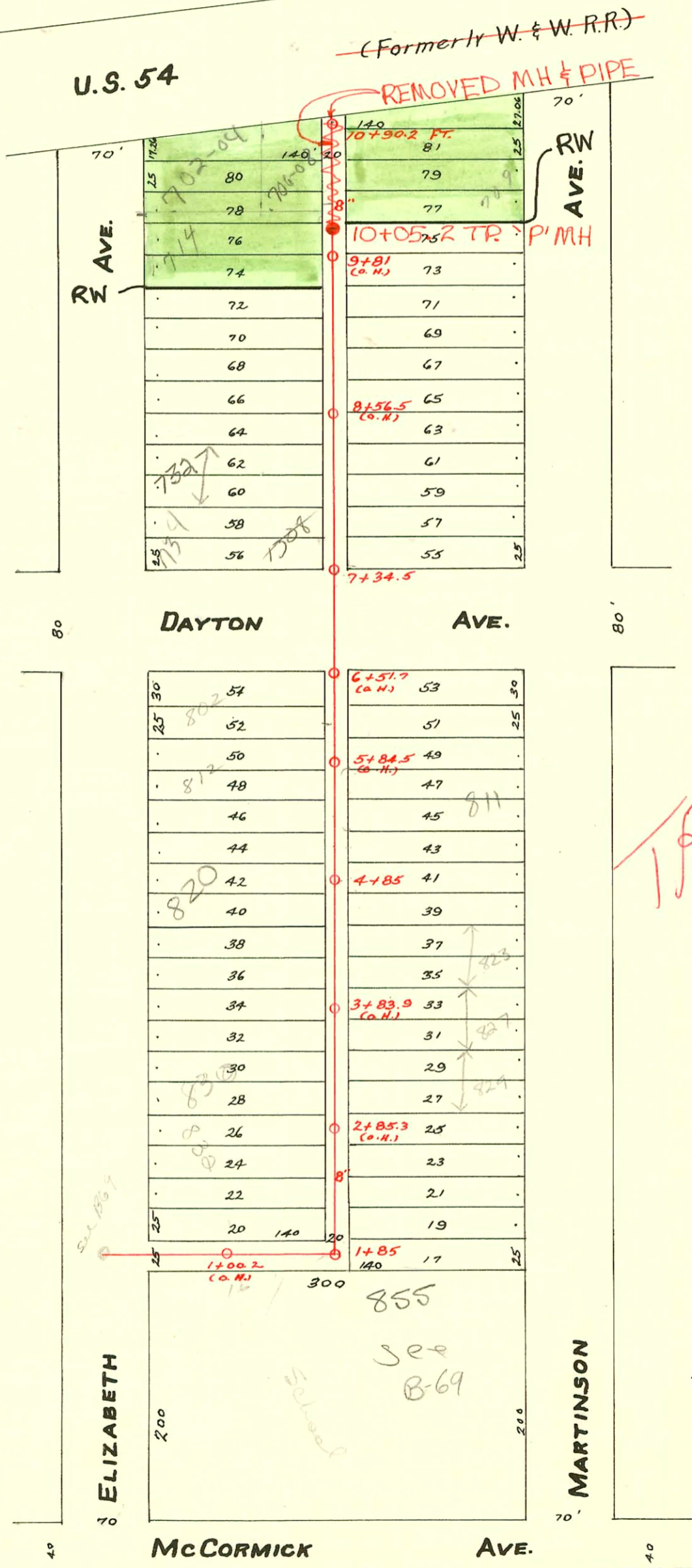


LATERAL No. 37-S.S. No. 8-1908

Trap Area

KELLOGG-K-42 TO SYCAMORE
(SANITARY SEWER CHANGES)
PROJ. NO. 700500
BUILT BY WILDGAT CONST. CO.
BOOKED 2-13-96 FROM AS BUILTS



TRAP AREA

2003-02159-8118103
855 Martinson ME Todd
6" PVC completion of
upper end 4" fall
shallow - 4" twin co
@ Bldg
Note: Per Virgil
School empl - tap to
21" main 65' w of
MH 5346-235

CONSTRUCTION RECORD

SERVICE RECORD

New MH
No info
on this
CKB
2-13-96

STATION	ELEVATION		Depth	MANHOLE	4-INCH "Y" BRANCHES		No. of Permit		House Number		DATE OF PERMITS		
	Ground	Grade			North West	South East	North West	South East	North West	South East	North West	South East	
				10+90.2	F.T.								
				10+82		10+79.5							
				10+56		10+53.5							
				10+30		10+27.5							
10	108.86	104.82	4.04	10+05.7		10+02							
				9+78.5		9+76							
				9+53		9+50.5							
				9+27.5		9+25	#1074	#904	718 S. Elizabeth		9-29-25	4-22-24	
9	108.86	104.52	4.34	9+02.5		9+00	#1282	#1017	722 S. Elizabeth	717 S. Martinson	11-30-25	11-19-30	
				8+77.5		8+75							
				8+52		8+49.5	#1773	#451	730 S. Elizabeth		8-4-24	8-14-13	
				8+26.5		8+24	#1759		832 S. R. Elizabeth		6-21-99	8-1-24	
8	108.57	104.22	4.32	8+00.0									
						7+97.5							
						7+74		#522 #217				10-26-15 4-15-14	
						7+48.5							
				7+34.5									
7	108.14	103.92	4.22										
						6+33.5							
						6+08		#91	#1996	802 S. Elizabeth	801 S. Martinson	3-1-29	9-3-24
6	108.64	102.62	5.02			5+82							
						5+56		#785	#193	812 S. Elizabeth	811 S. Martinson	7-5-22	3-11-25
						5+30.5							
						5+04.5		#1617		816 S. Elizabeth		7-14-24	
5	107.84	103.32	4.52			4+85							
						4+80		#2334 #1997		819 S. Martinson		9-3-24	
						4+54		#1616	#461	820 S. Elizabeth		7-14-24	5-27-21
						4+28		#13		824 S. Elizabeth		1-6-26	
4	107.44	103.02	4.42			4+04							
						3+76.5		#2655	#1998	826 S. Elizabeth	827 S. Martinson	12-5-24	9-3-24
						3+50.5							
						3+24.5		#833		830 S. Elizabeth		9-27-26	
3	106.79	102.72	4.02			2+98.5		#1094	#856	830 1/2 S. Elizabeth	829 S. Martinson	11-12-47	8-4-25
						2+72.5		#970		832 S. Elizabeth		9-7-28	
						2+48.5			#2646	845 S. Martinson		12-3-24	
2	106.89	102.42	4.47			2+28		#746		834 S. Elizabeth		7-12-28	
						1+94							
				1+85									
						1+70.5							
						1+26.5							
1	106.86	102.12	4.74			0+85							
0		101.82											

#1192 - Tap - 724 S. Elizabeth - 5-12-52 - G.A. Smith.

#145 - Tap - 829 1/2 S. Martinson - 2-25-54

22789 - 714 S. Elizabeth - 3-27-89 - Al Henry

#25766 - 7-14-90 - 1308 W. Day - 3A - Bob Scott - (S/O 17.5' N of MH)