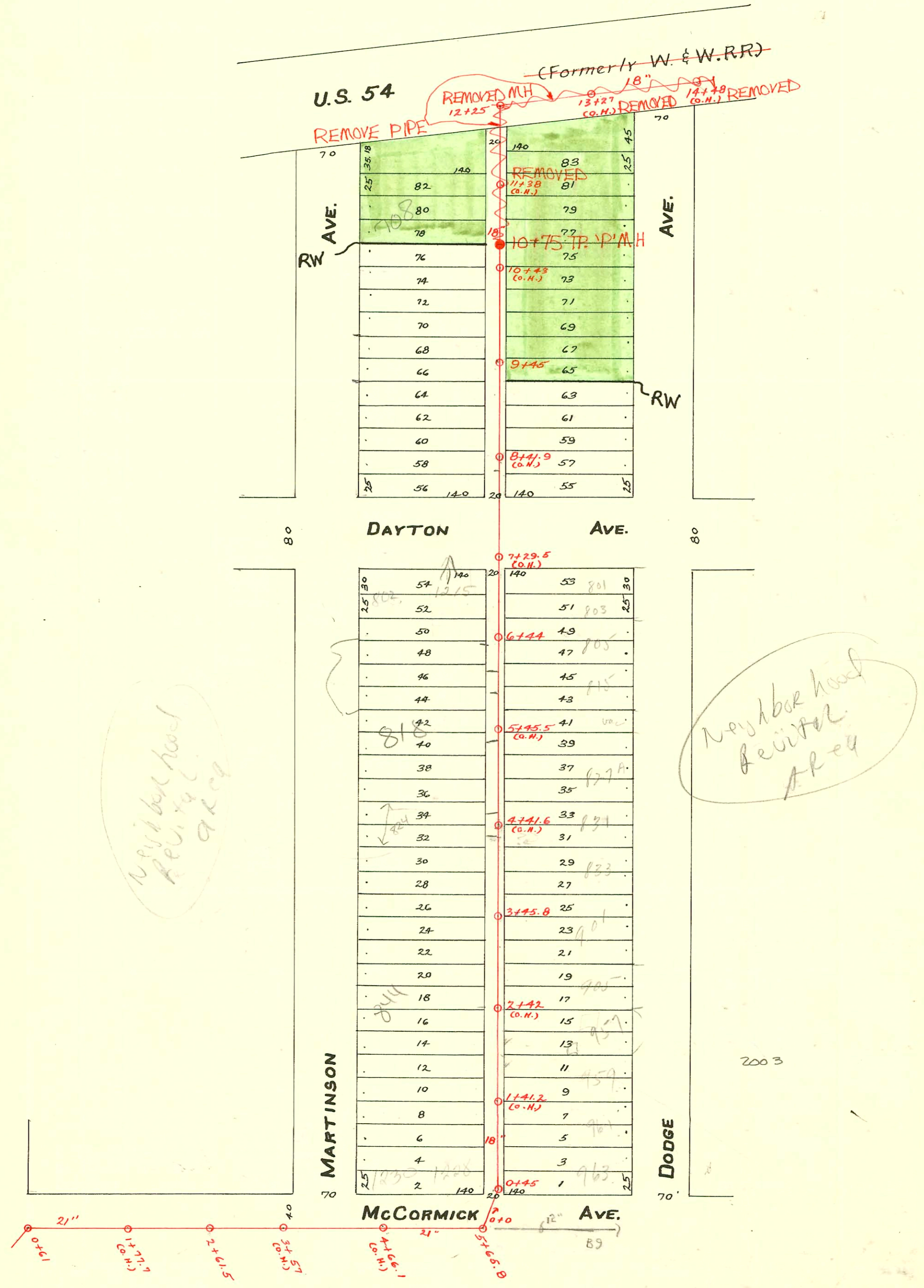


MAIN "C" S.S.No. 8-1908

TRAP AREA

KELLOGG - K-42 TO SYCAMORE
(SANITARY SEWER CHANGES)
PROJ. NO. 700500
BUILT BY WILDCAT CONST. CO.
BOOKED 2-13-96 AS PER PLAN



SWR 2001-00404 2-23-01 824 S. Martinson (newhouse by Habitat for Humanity) Boxes #/lbs =
4" SCH 40 -4" CITY TAP 196' S of MH 6+44 (4+48) -4" Trap, ITWIN CO, Dirt Alley Cut

CONSTRUCTION RECORD

SERVICE RECORD

STATION	ELEVATION		Depth	MANHOLE	4-INCH "Y" BRANCHES		No. of Permit		House Number		DATE OF PERMITS	
	Ground	Grade			North West	South East	North West	South East	North West	South East	North West	South East
22				22+41								
21	109.31	103.47	5.84	21+67		21+10 So. 20+84.5		#764				12-7-09
20	112.25	103.36	8.89									
19	108.09	103.25	4.84			19+16 18+92.5 18+69 18+43.5		#148				4-8-15
18	108.21	103.14	5.07	18+27		18+17.5 17+94 17+65 17+42.5		#1423 #1507				10-25-22 11-9-22
17	109.13	103.03	6.10			17+21.5 16+93 16+66.5 16+54		#910 #484				7-28-22 4-5-23
16	109.87	102.92	6.95			16+18 15+92.5 15+61.5		#409 #399				3-22-23 3-21-23
15	109.27	102.81	6.46	15+29		15+35.5						
14	110.44	102.70	7.74			14+97.5 13+45.5						
13	110.56	102.59	7.97									
12	110.46	102.48	7.98	12+25		11+94.5 E. 11+80.5 11+78 11+55 11+52.5		#932				8-1-22
11	110.32	102.37	7.95			11+02.0 11+07.5 10+81 10+78.5 10+58.5 10+56 10+33 10+30.5 10+07.5 10+05		#2802 #432 #573 #474 #557 #988	706 S. J. O. Martinson	5-24-91 4-29-25		4-10-23 4-4-23 8-10-21 8-11-22
10	110.47	102.26	8.21		10+75	9+81.5 9+79 9+56 9+53.5 9+31.5 9+29		#1963 #269	713 S. Dodge 715 S. Dodge			8-29-24 11-7-35
9	110.13	102.15	7.98			9+07.5 9+05 8+83.5 8+81 8+57.5 8+55 8+32 8+29.5 8+06.5 8+04		#223 #2559 #1163	719 S. Dodge 730 S. J. O. Martinson	3-27-91 6-9-13		2-18-24 11-18-24 8-18-19
8	109.46	102.04	7.42			8+06.5 8+04		#1077	861 S. J. O. Dodge	5-14-90 10-30-24		8-18-19
7	108.90	101.93	6.97			7+06 7+03.5 6+84 6+81.5 6+57.5 6+55 6+33 6+30.5 6+07 6+04.5 5+84.5 5+82 5+58.5 5+56 5+32.5 5+30 5+09 5+06.5 4+82 4+79.5 4+57.5 4+55 4+31.5 4+29		#170 #170 #641 #1774 #509 #1889 #2279 #24 #1675 #1822	720 S. J. O. Martinson 802 S. J. O. Martinson 1215 Dayton	9-19-22 3-26-10 3-8-56		10-17-19 7-17-19 7-25-21 8-4-24
6	108.97	101.82	7.15			6+07 6+04.5 5+84.5 5+82 5+58.5 5+56 5+32.5 5+30 5+09 5+06.5 4+82 4+79.5 4+57.5 4+55 4+31.5 4+29		#2101 #1774 #509 #1889 #2279 #24 #1675 #1822	808 S. Martinson 818 S. Martinson 827 S. Dodge 822 S. Martinson 831 S. Dodge 824 S. Martinson	9-15-24 4-3-54 9-19-24 10-15-54 5-14-47 7-21-24 10-25-94 8-11-24		8-4-24
5	108.72	101.71	7.01			4+06 4+03.5 3+82.5 3+80 3+56.5 3+54		#2104 #1493	832 S. Martinson 835 S. Dodge	9-15-24		6-26-24
4	108.30	101.60	6.70			3+32 3+29.5 3+06.5 3+04 2+83.5 2+81 2+57.5 2+55 2+32 2+29.5 2+08.5 2+06 1+82.5 1+80 1+57 1+54.5 1+31.5 1+29		#2104 #1493 #167 #129 #71 #63 #928 #2081 #893 #859 #38 #0047 #909	842 S. Martinson 905 S. Dodge 840 S. J. O. Martinson 957 S. Dodge 954 S. Dodge	10-10-83 9-17-24 2-13-25 8-22-25 9-27-68 9-22-54 9-27-21 9-20-21 8-13-24 2-24-12 2-8-21 4-22-24		4-3-13 4-3-13 2-1-26 8-22-25 9-27-68 9-22-54 9-20-21 8-13-24 2-8-21 2-8-21
3	108.22	101.49	6.73			0+82.5 0+83 0+53.5 0+51		#16940 #0048	856 S. Martinson 963 S. Dodge	4-22-24		9-10-56 2-8-21
2	108.25	101.38	6.87			0+45 0+44						
1	107.85	101.27	6.58									

See pages 9 & 10 for plat

New MH No info on this JKB 2-13-96

Line in McCormick

0+0 = 5+65.8 in McCormick
 Tap #470 - 1207 McCormick - Special Fee
 #2082 Trailer - 957 S. Dodge - 9-22-54 - Joe McDonald - Seal off
 #1527 Tap - 1230 McCormick - 5-8-44 - Jim Hanna
 #940 Tap - 1212 Dayton - 10-18-47 - George Sargent
 #6665 Tap - 724 S. Martinson - 10-10-53 George Magruder
 #4874 Tap - 731 S. Dodge - 7-10-57
 92-7609-1 1230 W. McCormick 5-21-92 (4" PVC 40 0+36.0 tap)