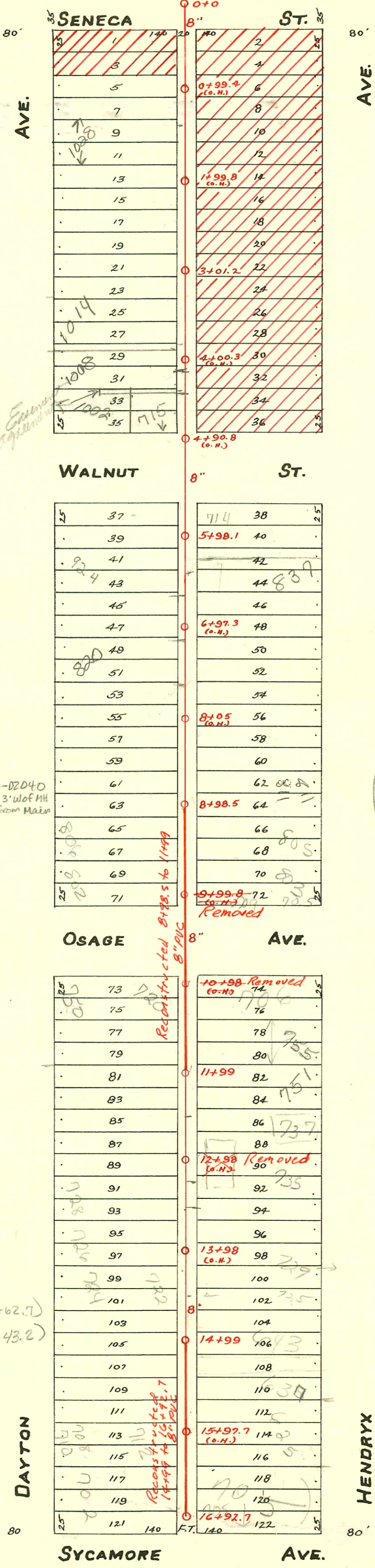


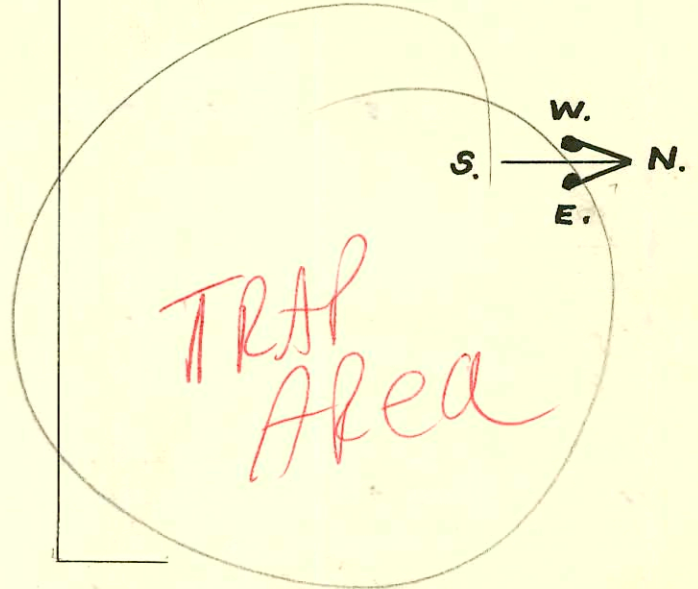
TRAP AREA

Re-Con 7-29-88

- # 21209 - 625 w. Hendryx (15+86.0)
- 21210 - 635 " " (15+70.0 tap)
- 21211 - 639 " " (15+21.6 tap)
- 21212 - 643 " "
- 21214 - 703 " "
- 21213 - 725 " "
- 21215 - 729 " "
- 21216 - 735 " "
- 21217 - 735 " "
- 21218 - 737 " "
- 21219 - 751 s/p " " s/p 9/15/00 2000-02040 s/p 3' w/ of MH 16' from Main
- 21220 - 753 " " (11+45.5 tap)
- 21221 - 765 " " (8-30-88)
- 21400 - 853 " " (8-30-88)
- 21398 - 805 " "
- # 21222 - 702 w. Dayton (16+62.7)
- 21223 - 708-10 (16+20.0 tap)
- 21224 - 712 (16+07.5 tap)
- 21225 - 714 (15+68.6 tap)
- 21228 - 720 (15+19.0 tap)
- 21229 - 724 " "
- 21230 - 724 " "
- 21231 - 726 " "
- 21232 - 728 " "
- 21233 - 734 " "
- 21234 - 734 " "
- 21235 - 736 (11+91.4 tap)
- 21236 - 750 " "
- 21237 - 750 " " (8-30-88)
- 21397 - 804 " " (8-30-88)
- 21399 - 802 " " (8-30-88)
- 2242 - 725 S. Sycamore
- 21241 - 705 S. Sycamore (16+62.7)
- 21240 - 703 S. Sycamore (16+43.2)
- 21239 - 701 S. Sycamore
- 21238 - 706 S. Osage (11+22.1)



NOTE:
CROSS-HATCHED
AREA CONDEMNED
FOR U.S. 54 HI-WAY R/W.



Alter, Repair or Reconstruct S. S. in Alley N of Dayton from Sycamore to W. of Osage 468-76-245-81771-000-000-001 Built By Utility Contr. Booked 1-4-89 from M6-7

Records for utility 14+99 to 16+92.7

CONSTRUCTION RECORD

SERVICE RECORD

STATION	ELEVATION		Depth	MANHOLE	4-INCH "Y" BRANCHES		No. of Permit		House Number		DATE OF PERMITS			
	Ground	Grade			SOUTH	NORTH	SOUTH	NORTH	SOUTH	NORTH	SOUTH	NORTH	SOUTH	NORTH
0	108.54	102.83	5.71	0+0	0+36 (R)	0+38.5 (P)	#526	#422			8-28-18	6-20-17		
					0+61	0+63.5	#20				2-4-09			
					0+79.5	0+82 (P)								
1	109.25	102.95	6.30		1+13	1+15.5	#600		1028 R see Dayton Below		3-1-02	8-20-17		
					1+38.5	1+41	#1012				10-24-21			
					1+62	1+64.5								
					1+87.5	1+90	#669	#2400	1025 Hendryx		10-28-09	9-5-52		
2	108.55	103.07	5.48		2+11	2+13.5	#20		1014 Hendryx		1-11-28			
					2+37	2+39.5	#291					4-19-20		
					2+65.5	2+68								
					2+86	2+88.5	#1013					10-24-21		
3	108.98	103.19	5.79	3+01.2	3+13.5	3+16	#596	#858	1014 (P) Dayton Below		4-23-23	9-19-21		
					3+37	3+39.5	#790				8-30-21			
					3+62.5	3+65	#503					9-10-13		
					3+86	3+88.5	#1548		1005 Hendryx			10-29-29		
4	109.06	103.31	5.75		4+11.5	4+14	#1054		1004? Dayton		12-7-46			
					4+35	4+37.5	#864	#86	115 Hendryx		9-21-21	4-2-12		
					4+61	4+63.5								
5	109.02	103.43	5.59		5+66.5	5+69								
				5+98.1	5+92	5+94.5	#1328	#50			10-10-24	1-28-08		
6	109.12	103.45	5.57		6+16.5	6+19	#1265				9-28-22	3-10-97		
					6+40	6+42.5	#276		837 Hendryx			5-14-18		
					6+63	6+65.5	#50	#1185	922 Dayton	833 Hendryx	2-11-25	11-19-21		
					6+93.5	6+96								
7	108.76	103.67	5.09		7+14	7+16.5	#3940	#1572	820 R Dayton	821 Hendryx	9-30-02 see Below	6-22-26		
					7+40	7+42.5	#525	#1614				7-14-24		
					7+65.5	7+68								
					7+91	7+93.5	#1613		819 Hendryx			7-14-24		
8	109.06	103.79	5.27		8+17	8+19.5	#1548		815 Hendryx		7-3-24			
					8+40	8+42.5	#346				1-23-09			
					8+60.5	8+63	#1388				11-20-19			
					8+89	8+91.5								
				8+98.5										
9	108.91	103.91	5.00		9+15	9+17.5								
					9+39	9+41.5	#1143	#1981	805 Hendryx		9-2-22	9-2-24		
					9+64.5	9+67	#1487	#838	803 Hendryx		11-6-22	6-2-23		
					9+87.5	9+90								
10	108.59	104.03	4.56											
				10+98										
11	108.62	104.15	4.47		11+20	11+22.5	#267	#67156	765 Hendryx		11-7-73	6-29-78		
					11+43	11+45.5	#3940	#1572	760 Dayton		11-25-51	7-8-24		
					11+68.5	11+71	#51657				10-2-75	9-15-00		
				11+99	11+92	11+94.5	#87	#2087	736 Dayton	751 slip Hendryx	4-2-12	9-12-24		
12	108.91	104.27	4.64		12+20	12+22.5			734 Dayton	737 R Hendryx	12-18-22	10-103		
					12+45.5	12+48	#1725	#2075				9-19-24		
					12+73.5	12+76								
					12+94.5	12+97	#68759		734 Dayton		10-5-75			
13	108.91	104.39	4.52		13+20	13+22.5	#4097			735 slip Hendryx		8-18-41		
					13+45.5	13+48	#1711					7-24-24		
					13+72	13+74.5	#24		728 Dayton		5-20-48			
					13+94.5	13+97	#13871					2-16-61		
14	108.99	104.51	4.48		14+20.5	14+23	#1839	#1659	726 Dayton	703 Hendryx	3-23-48	7-18-24		
					14+48.5	14+51	#703	#1225	724 Dayton	725 Hendryx	8-18-48	11-10-25		
					14+74.5	14+77	#2083		724 Dayton		6-5-45			
				14+99	14+93	14+95.5	#1864			643 Hendryx		12-30-44		
15	109.11	104.63	4.48		15+20	15+22.5	#25	#1628	720 Dayton	643 Hendryx	2-3-30	7-15-24		
					15+46	15+48.5								
					15+69	15+71.5	#1471	#202	714 Dayton	635 Hendryx	10-15-29	4-24-18		
					15+95	15+97.5	#132			625 Hendryx		8-25-32		
16	109.20	104.75	4.45		16+20.5	16+23	#726		708-10 Dayton		8-23-48			
					16+43.5	16+46								
					16+69.5	16+72								
					16+85	16+87.5								
				16+92.7 FT.										

2002-00559 3/1/02 1008 W Dayton Reddy Rostr - Fernco, Twinco, Repl 10' pipe @ house 4" sch 40
 2002-02701 9/30/02 820 W Dayton - A Good Pflr - Replace all but lower 3' of swr, twin 4" @ house, trap, 3H22
 051658 - 750 Dayton Hwy. B - 10-2-75 (12+92) (11+13.5 in)
 #94-19833-7-12-9-91-755 W. Hendryx - replaced all but upper 3' of line - 6" SDR35
 #132 - Top - 625 Hendryx - 8-23-32 - Roy E. Miller
 #1184 - Used old connection - 712 S. Seneca - 11-1-38 - Nelson Pflg. Co.
 #921 - Top - 1024 Dayton - 10-14-47 - Pray Bros.
 #455 - Private line - 1008 Dayton - 7-27-48 - Frederick Pflg.
 #621 - 701 S. Sycamore - 6-6-22
 #2293 - Top - 709 S. Walnut - 3-18-49 - Robinson Pflg.
 #4054 - Used old connection - 760 S. Osage - 3-7-51 - Millard Stagers
 #621 - Top - 712 Dayton - 4-13-54 - Frederick Pflg. Co.
 #2446 - Repair - 813 Hendryx - Jones Pflg. - 11-8-54.
 #667758 - 734 Dayton - 10-5-75 - Below