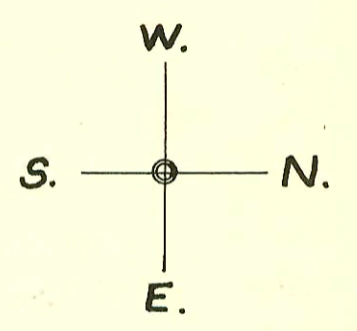
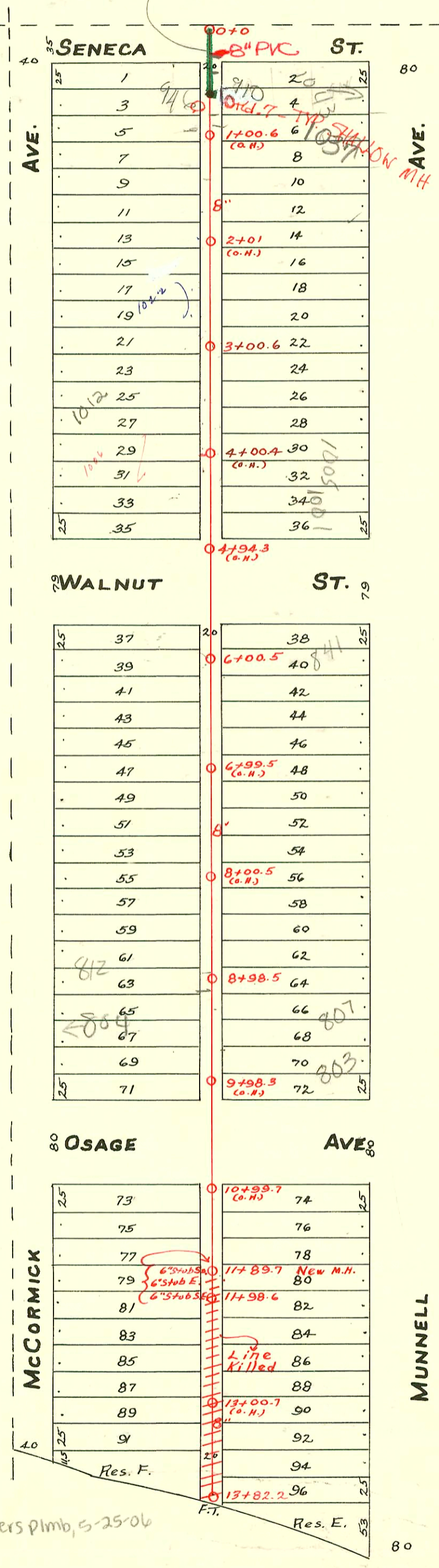


LATERAL No. 53  
S.S.No. 8-1908

See B-9

TRAP AREA

Reconnection  
0+25 North



2006-01312-324 Wm McCormick - Bowers Plmb, 5-25-06  
4" PVC, 10" dia C10

### CONSTRUCTION RECORD

### SERVICE RECORD

STATION	ELEVATION		Depth	MANHOLE	4-INCH "Y" BRANCHES		No. of Permit		House Number		DATE OF PERMITS	
	Ground	Grade			South	North	South	North	South	North	South	North
0	107.81	102.06	5.75	0+0	0+36.5	0+39	#60		908 S. Seneca		5-25-48	
					0+65.5	0+68	#311	#231	1035 Munnell		6-28-12	4-19-10
					0+88.5	0+90.5	#2781	#109	946 S. Seneca	1037 R See	10-15-56	6-3-03
1	107.57	102.18	5.36		1+12	1+14.5	#189	#492	1038 McCormick	Munnell	5-4-29	5-4-29
					1+39.5	1+42	#2412	#245	1032 McCormick		10-25-24	3-27-22
					1+62.5	1+65						
					1+86	1+88.5	#716		1028 McCormick	1029	12-3-41	
2	108.20	102.30	5.90		2+15	2+17.5	#167	#400	1028 1/2 McCormick	Munnell	6-9-48	7-16-46
					2+38	2+40.5	#424		1022 McCormick		6-2-80	
					2+63.5	2+66	#1364					9-17-23
					2+87.5	2+90	#2026		1020 McCormick	1017	4-30-45	
3	108.01	102.42	5.59	3+00.6	3+13	3+15.5	#512		1012 R McCormick	Munnell	8-28-02	8-13-46
					3+36	3+38.5	#790				10-15-46	
					3+64.2	3+67	#55954		1009 McCormick			6-16-76
					3+87.5	3+90	#297		1005 1/2 McCormick			4-10-22
4	107.65	102.54	5.11		4+10	4+13.5	#375		1006 McCormick			6-18-09
					4+37	4+39.5	#2558	#507	1002 McCormick	Munnell	11-18-24	8-13-46
					4+61	4+63.5						
5	107.27	102.66	4.61		5+64.5	5+67						
					5+90	5+92.5	#1078	#123	842 McCormick	Munnell	10-5-28	2-21-22
6	107.38	102.78	4.60	6+00.5	6+15	6+17.5	#2296	#520	830 McCormick	Munnell	5-7-40	6-21-26
					6+43.5	6+46						
					6+67	6+69.5	#781	#885	832 McCormick		8-5-24	9-29-21
					6+90	6+92.5	#2091		826 McCormick		9-12-24	
7	107.59	102.90	4.69		7+16	7+18.5		#494		Munnell		8-24-10
					7+39.5	7+42						
					7+65	7+67.5	#2383		822 McCormick		10-22-24	
					7+90.5	7+93		#982				8-10-22
8	108.06	103.02	5.04		8+14	8+16.5	#2194	#252	818 McCormick		8-31-56	4-6-21
					8+40	8+42.5		#81		807 W R Munnell		5-20-02
					8+66	8+68.5						3-4-09
			4.4	8+98.5	8+89.5	8+91	#1772				8-2-24	
9	107.46	103.14	4.32		9+14	9+16.5	#0057	#645	804 R McCormick	Munnell	2-23-21	11-25-10
					9+40	9+42.5	#1711	#482			7-22-24	8-13-10
					9+65.5	9+68	#1700		819 S. Osage		10-27-47	
					9+89.5	9+92					7-22-24	
10	107.33	103.26	4.07		10+96	10+98.5						
11	107.49	103.38	4.11		11+20	11+22.5	#1191	#890	728 McCormick		10-30-25	12-5-17
					11+45.5	11+48						
					11+89.7	11+71		#7771		723 Munnell		8-2-24
			3.4	11+98.6	11+95	11+97.5	#1734	#337	722 McCormick		7-28-24	8-23-16
12	106.91	103.50	3.41		12+19.5	12+22		#520		717 Munnell		10-11-37
					12+45.5	12+48		#336				8-23-16
					12+71	12+73.5	#2455		700 McCormick		10-31-24	
					12+95	12+97.5		#183		717 Munnell		3-2-28
13	106.33	103.62	2.71		13+20.5	13+23						
					13+82.2 FT.	13+45.5		#2299		715 Munnell		10-13-24
14	104.83	103.74	1.09									

SWR2003-0 1454 63-03 1037 W Munnell (Pop at appol) Redd; Root 4" 40 PVC Replaced 9' of sewer to point 9'5' from main New 4" trap installed 11" fall shallow no alley cut 90.5' of MH to 0+90.5

2003-00339 804 W McCormick 2/12/03 Adams Custom Plbg - 4" PVC 40 - 4" CI TAP - New 5' section of main replaced by city - 19' E of MH 8+98.5 (9+17.5) Replaced entire line, new trap, 4" twin cu @ house, dirt alley cut

2001-02703 10126/01 803 W Munnell - HD Mills 5/0 3'E of WPL and 59' N of SPL (RPL)

95-151451 61066 - 908 S. Seneca 10-5-45 5-1-77 TAP (0+78.8)

- #5204 - Building New Manhole - 820 S. Osage - 5-13-53 - Ripstra-Turner
- Top - #1561 - 714 McCormick - 10-30-29 - C. C. McLaughlin
- #1660 - Used old connection - 904 S. Seneca - 3-21-47 - C. Frank McCoy
- Top - #4646 - 812 McCormick - 5-14-51 - J. N. Hanna 4-6-06 - 2006 - 00932
- #6204 - Top - 812 1/2 McCormick - 11-12-51 - Harry Mann.
- #2261 - Stub East in 11+89.7 } West High School
- #2262 - " South in 11+89.7 } 8-21-52
- #2263 - " S.E. in 11+89.7 } Ripstra-Turner Co.