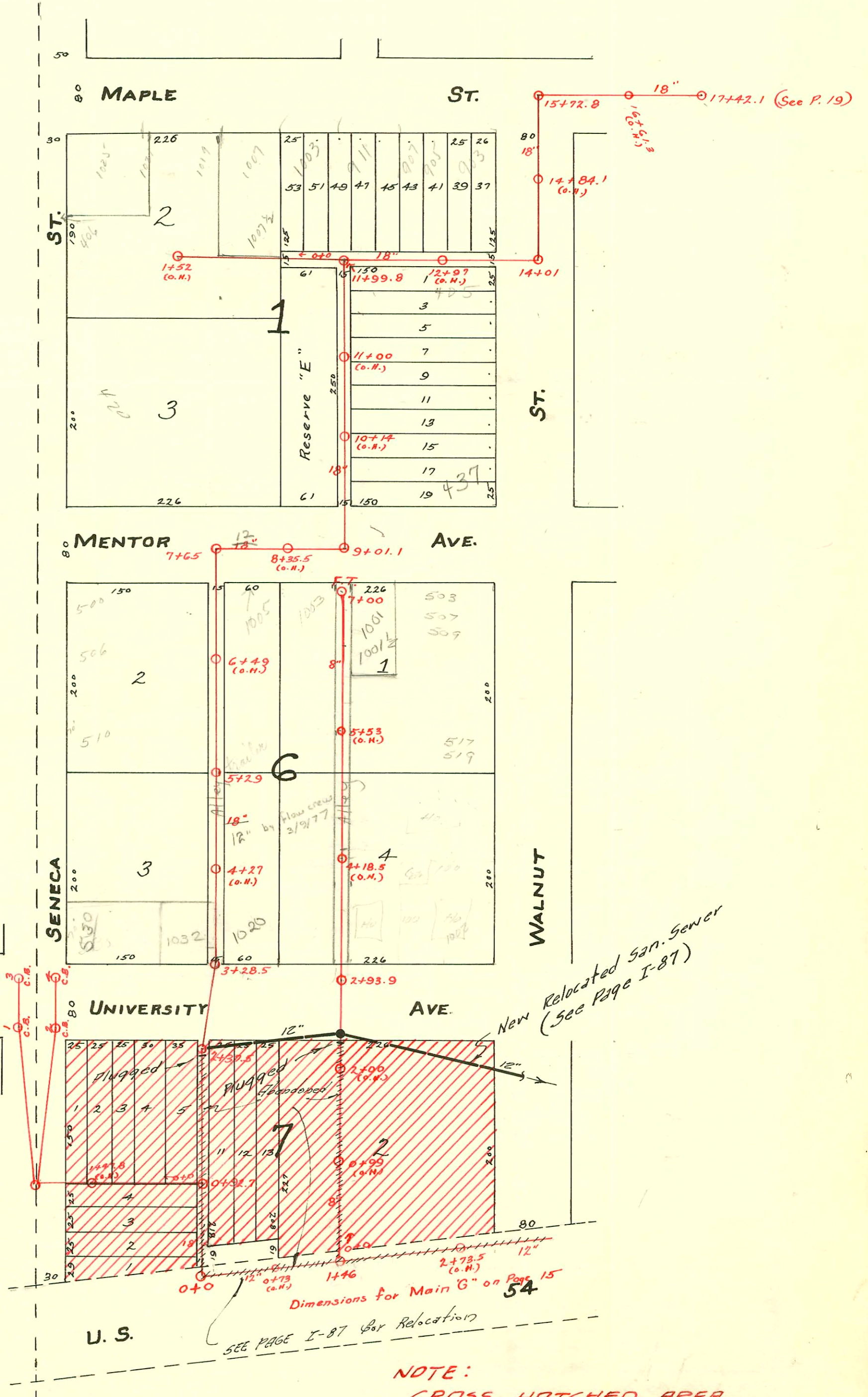


LAT'S 39, 40, & 46 AND MAIN G. & E.  
S.S. No. 8-1908

257

TRAP AREA

169' of 6" Pipe from each of the  
C. 83 1 & 2 to M.H.. From M.H. to  
O.H. on San. Sewer there is 56'  
of 8" Pipe.



NOTE:  
CROSS-HATCHED AREA  
CONDEMNED FOR U.S. 54  
HI-WAY R/W

### CONSTRUCTION RECORD

### SERVICE RECORD

STATION	ELEVATION		Depth	MANHOLE	4-INCH "Y" BRANCHES		No. of Permit		House Number		DATE OF PERMITS	
	Ground	Grade			North West	South East	North West	South East	North West	South East	North West	South East
7	109.39	105.94	3.45	7+00 FT.		6+95		#118				2-18-22
6	109.45	105.64	3.81		6+45	6+42.5	26143	#201	100 1/2 R Mentor	503 S WALNUT	4-18-90	4-19-09
					5+56	5+81.5		#1200		509 S Walnut		3-17-42
						5+49		#279				4-6-22
5	109.66	105.34	4.32		4+60	4+57.5		#1291				6-4-24
						4+29		#1228				12-9-21
4	110.68	105.04	5.04		4+01	4+03.5		#523	1014 University		8-20-09	
3	109.70	104.74	4.96			3+72.5						
				2+93.9								
2	109.62	104.44	5.18									
1	108.98	104.14	4.84		1+52	1+49.5	#220	#1721	1019 University	601 Walnut	6-16-47	7-25-24
					0+96	0+93.5						
0	107.53	103.84	3.69		0+50.5	0+48						
				1+47.8 (O.H.)								
				0+0 M.H. 0+92.7 on Main E.								
1				1+52 (O.H.)	1+41	1+42.5	#278	#35	42nd S Seneca	410 S Seneca	5-14-10	2-13-09
					0+95		#717		1007 Maple		12-11-14	
					0+68.5		#1934		1007 1/2 W. Maple		10-7-49	
0					0+30		#406		1003 Maple		9-29-16	
17	110.77	105.38	5.39	17+42.1								
16	110.38	105.28	5.10									
15	110.47	105.18	5.29	15+72.8								
14	110.66	105.08	5.58	14+01								
					13+48							
13	109.77	104.98	4.79		13+07			#40	1103 Maple		2-13-09	
					12+81.5			#450	905-03 Maple	405 S Walnut	1-25-77	1-18-13
					12+63	12+79		#22	911 W Maple		10-3-12	
					12+45						3-21-77	
					12+29.5							
12	110.38	104.88	5.50		12+00.5			#695			9-18-17	
				11+99.8		11+44.5		#713		415 S Walnut		8-24-27
11	110.51	104.78	5.73			11+04		#560				8-2-17
					10+84	10+81.5						
						10+38						
					10+22.5	10+20						
10	110.48	104.68	5.80			9+70		#10		437 S Walnut		2-3-09
9	109.66	104.58	5.08	9+01.1	9+48.1			15267	400 Seneca		12-13-25	
8	109.54	104.48	5.06									
				7+65								
7	110.64	104.38	6.26		7+06.5							
					6+85			#325				3-5-23
					6+64			#813				4-14-24
					6+32.5	6+30						
6	110.84	104.28	6.56		6+07.5			#400	510 S Seneca		3-18-66	6-28-09
					5+86.5							
					5+64							
					5+35							
5	110.79	104.18	6.61	5+29	5+10			#286	501 S Seneca		5-17-09	
					4+85							
					4+56.5			#247				5-4-09
					4+40.5	4+37.5						
4	110.49	104.08	6.41		4+11			#87				3-13-09
					3+91	3+88.5		#161				4-5-09
					3+59.5			#137				2-7-24
3	108.64	103.98	4.66	3+28.5	3+46			#7	520 S Seneca	501 S Seneca	2-2-09	
2	109.82	103.88	5.94	2+37.5								
1	109.80	103.78	6.02			1+98.5		#538				11-19-12
				0+92.7								
					0+79							
					0+55							
					0+24.5							
0	108.75	103.68	5.07	0+0	0+10			#145				3-24-13

LAT. No. 40.

LAT. 46

No. E.

Main

22. 57508-68 Seneca 911 W Maple 1-18-77 (12+00.0)

#1098-Top-406 S. Seneca - 12-13-27-5909 12-20-57 Use all connections for 406 S. Seneca  
 #3792-Top-1009 Mentor - 7-9-41 - Ray Bryant (Tap at 6+46.5)  
 #1199-Top-1011 Mentor - 3-17-42 - Cherry Pkg. Co.  
 #2423-Top-1003 Mentor - 11-14-45 - Robinson Pkg.  
 #858-Top-1002 Mentor  
 #6890-Setting wye-Trailer - 615 S. Walnut - 11-5-53 - Joe McDonald  
 #6891-Private line-Trailer - 615 S. Walnut - 11-5-53 - Joe McDonald  
 #3890-Top-420 S. Seneca - 2-28-51 - Davidson Pkg. Tap at 11  
 #4180-Setting wye - 1003 W. Maple - 2-24-53 - C.G. Clemon-Trailer  
 #6444-Setting wye-trailer - 633 S. Walnut - 9-15-53 - Joe McDonald  
 #6445-Private line-trailer - 633 S. Walnut - 9-15-53 - Joe McDonald

9105 Top 404 S. Seneca Seneca 9-9-54 M.H. 7165  
 #14020 24 wye-trailer 1005 Mentor Robinson Pkg. 3-29-61 (5+23.5)  
 #15443-Set wye-Trailer - 1003 Mentor - Cherry Pkg. 4-6-62 (5+41)  
 #85280-Top 510 S. Seneca Paul Seneca - 3-18-66 (5+39.7)  
 2000-02605 for 510 S. Seneca 112200 Attentioning-10'N  
 of MH 5+29 + 8' from main