

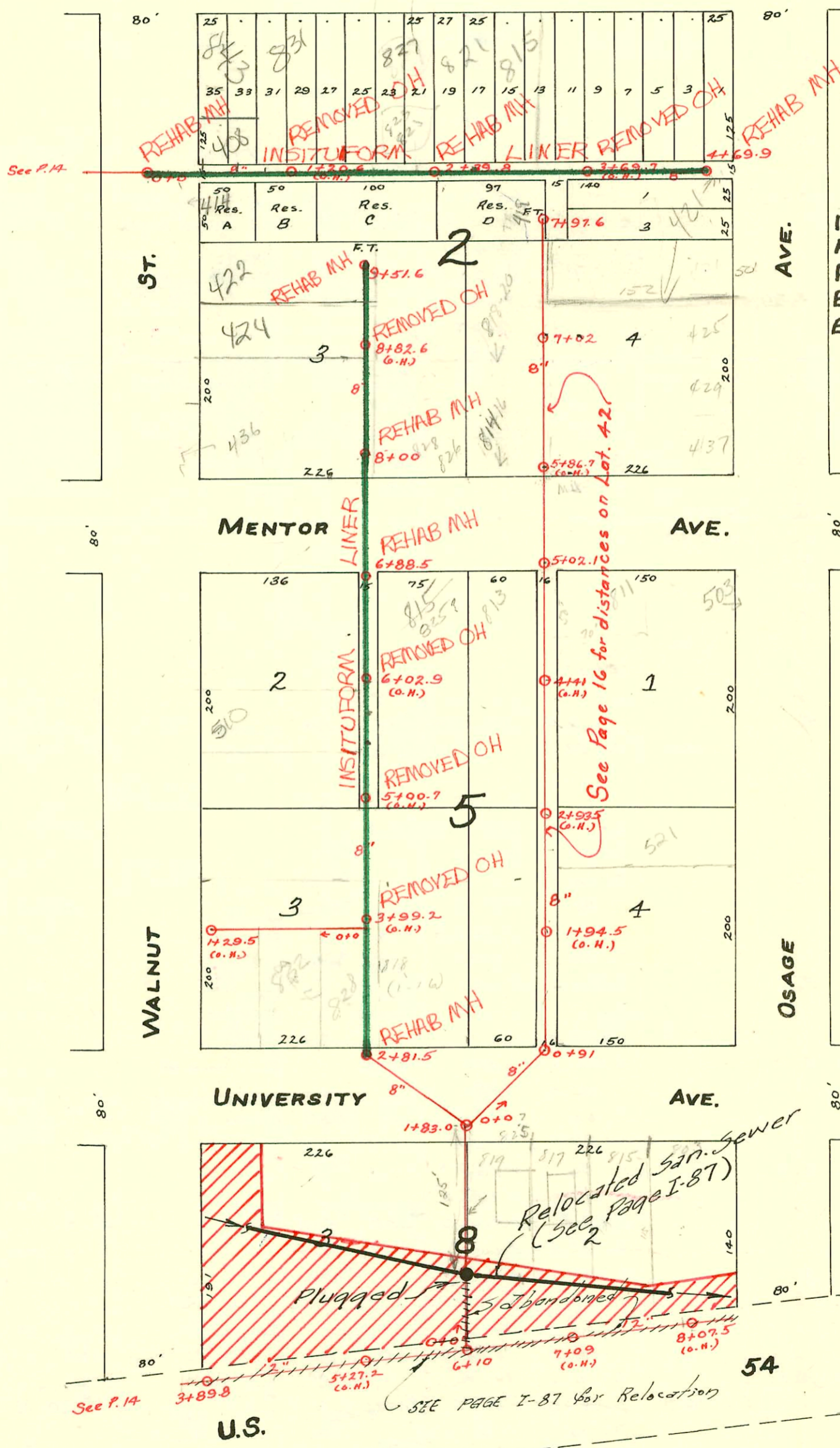
RECONNECTIONS

STA.	ADDRESS	DIRECTION
4+61.1	801 & 803 W. Maple	North
4+15.6	805 & 807 W. Maple	North
3+88.4	809 & 811 W. Maple	North
3+30.4	813 W. Maple	North
2+96.1	815 W. Maple	North
2+53.1	821 W. Maple	North
1+96.4	823, 825 & 827 W. Maple	North
1+53.4	829 W. Maple	North
1+02.7	831 W. Maple	North
0+75.2	414 S. Walnut	South
0+99.4	408 S. Walnut	North
0+55.7	404 & 406 S. Walnut	North
9+44.6	422 S. Walnut	West
8+87.4	424 S. Walnut	West
8+80.8	824 W. Mentor	East
8+60.9	430 S. Walnut	West
8+43.1	828 W. Mentor	East
8+38.0	430 S. Walnut	West

**PART OF MAIN "G"
LATERALS 41-42 AND 43,
S.S. No. 8-1908.**

→ see Below - next page
→ 517605 SUR 2005-0479 - Betzenbach
→ SUR 2005-00437 - Betzenbach
2002-02714 Add it up - 4" sch 40 Replace all but lower 1' 3" with 1" way CO, 2" kickouts, trap

TRAP AREA



RECONNECTIONS

STA.	ADDRESS	DIRECTION
6+55.6	502 S. Walnut	West
6+30.4	506 S. Walnut	West
6+21.7	825 W. Mentor	East
5+57.9	510 S. Walnut	West
5+06.8	516 S. Walnut	West
4+57.1	518 S. Walnut	West
4+09.7	832 & 836 W. University	West

RECONNECTIONS

STA.	ADDRESS	DIRECTION
3+52.2	824 W. University	East
3+37.7	828 W. University	West

**NOTE:
CROSS-HATCHED AREA CONDEMNED
FOR U.S. 54 HI-WAY R/W.**

CONSTRUCTION RECORD

SERVICE RECORD

STATION	ELEVATION		Depth	MANHOLE	4-INCH "Y" BRANCHES		No. of Permit		House Number		DATE OF PERMITS	
	Ground	Grade			North West	South East	North West	South East	North West	South East	North West	South East
1				1+29.5 (O.H.)		1+22						
						0+97		#1483				11-6-22
						0+77						
0				0+0 = (3+99.2)		0+45.5		#778				7-3-22
				4+69.9	4+60	4+42.5		#300	803 W. Maple		10-21-37	5-25-31
4	112.11	106.48	5.63		4+13.5	4+01		#4487	481 S. Osage			3-27-95
					3+82	3+83		#522	809 W. Maple		10-21-37	
					3+65			#538	813 W. Maple		10-21-37	
					3+39			#893	807 W. Maple		6-21-21	
3	110.94	106.18	4.76		3+16			#123			9-23-30	1-24-23
					2+90.5							
					2+65	2+62.5			821 S. Osage			10-21-13
					2+46.5			#572				
				2+39.8								
2	111.37	105.88	5.49		2+16.5			#274	827 W. Maple			7-1-16
					1+88.5							
					1+65							
1	110.93	105.58	5.35		1+42	1+39.5		#581	829 W. Maple			7-7-26
					1+16.5							
					0+93.5							
					0+67.5							
					0+43.5			#364	1949-01448	414 R. Walnut St	12-13-99	2-17-22
0	110.66	105.28	5.38	0+00								
				9+51.6 FT.	9+44.6	9+14		#428				7-19-10
9	110.73	106.97			9+11.5			#194				4-5-10
					8+85.6			#335				6-7-09
					8+58							
					8+34	8+31.5		#289	436 Walnut			5-18-10
					8+08.5							
8	110.53	106.67	3.86		7+93							
7	110.13	106.37	3.76		6+88.5	6+73		#721	502 S. Walnut			4-7-24
					6+47.5							
					6+21.5							
6	110.53	106.07			5+96							
					5+72.5	5+34.5		#94	510 S. Walnut			3-8-94
					4+73.5			#374	514 S. Walnut			12-3-93
					4+45.5							
5	110.55	105.77	4.78		4+196.0	4+71.0		#94	514 S. Walnut			3-13-15
					4+123.0							
					3+97.0							
					3+72.0	3+74.5						
					3+46.5							
3	109.41	105.17			3+23.5			#172	824 University			3-27-14
					2+98.5							
					2+77.0			1907	818-9-6 University			
2	109.01	104.87		2+81.5								
1	109.31	104.57		1+83		1+76.0		1906	818-1-8 University			11-17-80
						0+83.0		#153	University			4-2-09
0	109.30	104.27		0+00								
0	108.67	103.63	5.04	0+0		0+25						
						1+01.5						
1	107.34	103.69	3.65	1+46		1+53						
						1+97		#402				4-29-11
						2+48.5						
2	107.54	103.89	3.66			3+98.5		#148				4-3-18
3	110.02	103.99	6.03	3+89.8		4+45						
4	108.63	104.09	4.54			4+94.5		#610				4-25-23
						5+94						
5	109.34	104.19	5.15			6+94		#547	819 University			5-23-22
6	107.54	104.29	3.25	6+10		7+17		#92	815 University			3-2-10
7	107.16	104.39	2.77			7+69						
						7+92		#1609	803 S. University			11-2-23
8	108.64	104.49	4.15			9+49		#194	608 S. Osage			3-22-27
9	109.17	104.59	4.58	9+28.5								
10	108.93	104.69	4.24									
11	108.21	104.79	3.42	11+41								

Lot. No. 45

Lot. No. 41

#312 - Top 88' E. of 0+0 - Lat. 45 - 4-13-22 - 408 S. Walnut - 510 S. Osage - 818 University - 12-29-77 Henning (1165)

#313 - Top 814 University - 4-7-30 - Geo. Sargent

#31 - Top - 813 Mentor - 1-22-31 - P.C. Fish.

#118 - Top at 8+77.6 - 826 Mentor - 9-18-41 - Jensen Plbg.

#231 - Private line - 514 S. Walnut - 6-18-48 - Baker Plbg.

#589 - 608 S. Osage - 101 W. Maple - 3rdwick Plbg - 12-21-51

#12003 - 811 Mentor - 811 Mentor - 11-27-59 4487

#33365 - 4198 Osage - 5-7-65 - 610 (7+86.6)

C71800 818 S. Walnut - 5-16-79 - Bauer

H.00163 - 4/29/91 - 827 W. University - Henning - 5/0 6' clay 89's of HH.

95-8712-2 - 6-15-9 - 827 W. Maple - Rear - 50 15' E of apt house w/ and 53' N of SR.