

TRAP AREA

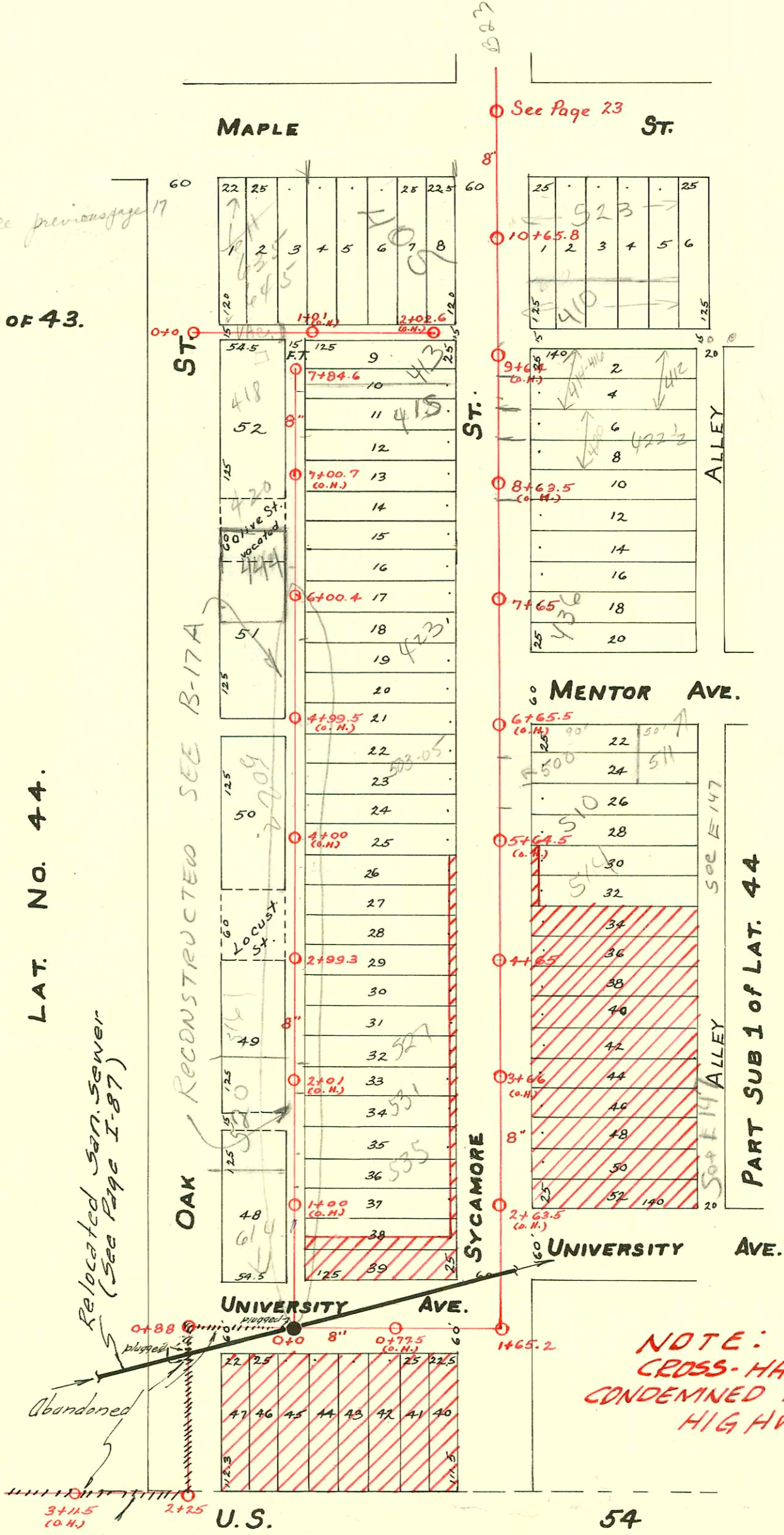
SUB. EAST OF 43.

LAT. NO. 44.

Relocated San. Sewer  
(See Page I-87)

Abandoned

SEE PAGE I-87 for Relocation



NOTE:  
CROSS-HATCHED AREA  
CONDEMNED FOR U.S. 54  
HIGHWAY R.I.W.

### CONSTRUCTION RECORD

### SERVICE RECORD

Part of Sub-Lot No. 1 of Lot 44.

East Sub-Lot of Lot 43.

Lot No. 44.

STATION	ELEVATION		Depth	MANHOLE	4-INCH "Y" BRANCHES		No. of Permit		House Number		DATE OF PERMITS	
	Ground	Grade			North West	South East	North West	South East	North West	South East	North West	South East
						10+75						
				10+65.8		10+50.5						
10	110.50	106.39	4.11			10+24.5		#274		4107 S Sycamore		5-11-09
						10+01.5						
						9+74.5		#147		410 S. 5th Sycamore		3-17-50
						9+51.5		#376		412 S Sycamore		6-18-09
						9+25.0		#447		411 S Sycamore		7-20-09
9	110.60	106.29	4.31			9+00.0		#309		412 S Sycamore		5-25-09
						8+75.0						
						8+50.0		#774		420 S Sycamore		12-23-09
						8+25.0						
						7+99.5						
						7+75.0						
						7+50.0		#451		426 S Sycamore		7-22-09
7	110.57	106.09	4.48	7+65		7+25.0		95-3358-7				10-17-95
						6+75.0		91-3455-7		500 S R Sycamore		1-10-10
						6+35.0		#788				
6	110.59	105.99	5.40			6+20.0		95-4115-701		510 S S10 Sycamore		3-29-95
						5+94.5		#273				5-11-10
						5+70.0						
						5+45						
5	110.84	105.89	5.05			5+20.5		17097		514 S S10 Sycamore		3-27-07
						4+95		#322				6-2-10
						4+70						
					4+65	4+45		#508		520 S Sycamore		9-3-10
4	110.81	105.79	4.98			4+20						
						3+95		#778				9-21-11
						3+70		#779				9-21-11
						3+36						
3	110.51	105.69	5.18			3+07.5						
						2+84.5						
2	110.79	105.59	5.20			2+58.5						
						1+71.5						
1	110.28	105.49	4.79	1+65.2		1+11.5						
						0+86						
						0+60.5		#303				2-26-24
						0+34.5		#448				7-3-17
0	110.18	105.39	4.79			0+11.5						
<hr/>												
2	111.16	108.01	3.15	2+02.6	1+78.5			14235		615 Sycamore		9-14-95
1	111.56	106.95	4.61		1+35			13310		405 S Sycamore		3-25-86
					0+98.5			#331				1-21-09
					0+83.0			#1193				11-30-21
0	111.13	105.95	5.18	0+70	0+37			13357		635-4 S W. Maple		4-1-69
<hr/>												
					7+84.6	7+77.5						
						7+64.5						
						7+41.5		14056		418 S Oak		5-13-69
7	112.36	106.79	5.57			7+39		#314	#319			10-24-19
						7+16						8-14-16
						6+91		#756				6-29-22
						6+83		#47	#15			2-23-09
						6+57						1-16-13
						6+40						
6	111.96	106.59	5.73	6+00.4	6+24.5	6+14.5		24067	#178	421 S R Sycamore		12-28-09
					5+95.5	5+90.5		#118	#432	404 S Oak		3-31-16
						5+65				423 S Sycamore		6-22-01
						5+42		#53				5-11-11
						5+15.5		#26				2-6-13
						4+92.5						1-23-13
						4+90				425 S Sycamore		10-5-10
						4+65				503-05 S Sycamore		5-1-73
						4+41.5		15535		502 S Oak		3-2-09
4	111.83	106.19	5.64		4+05.5	4+16		#323				1-28-86
						3+89.5						6-30-15
						3+66						
						3+58.5		#485				11-13-16
3	111.65	105.99	5.66		3+06.6	3+17		2000-01377	#432	515 S R Sycamore		6-8-00
						2+99.3			#487	528 S Sycamore		7-13-09
						2+91						8-16-10
						2+66.5						
						2+40.5						
2	110.57	105.79	4.78			2+14.5		#604				7-13-21
						1+96		#1307	#672			10-7-22
						1+65						4-3-24
						1+42		#153				2-11-24
1	110.39	105.59	4.80		1+21	1+16		#1630				11-28-22
						0+75		#648		602 University		7-26-21

#C13366 leaf off 611 W. Maple - Ben. Whiffen - 4-1-69 (0+50) (S.E. corner) **Cont. on P. 17A**

#985-520 S. Oak - 11-1-30 - Preston P1b9. (120' N Y MH)

#1923-Top in University Ave. line - 607 S. Sycamore - 2-20-45 - C.L. Brodie

#2900-Top in Sycamore St. - 523 W. Maple - 12-5-49 - Simmons P1b9.

#93-19393-7 - 426 S. Sycamore - 7/21/93 - 3/4" clay - edge of sidewalk 18' S. of curb

95-2174-7 436 S. Sycamore 24571 - 6" clay s/o 6.5' S of curb and just inside sidewalk

#93-5384-7 - 523 W. Maple (10352) 3/18/93 - 6" Clay tile line sealed off 30.5' S. of MH and 30' from main in Sycamore St. Note: 410 S. Sycamore was tied into this line

#93-5382-7 - 410 S. Sycamore (10352) 3/18/93 - 6" Clay tile line sealed off 30.5' S of MH and 30' from main. (523 W. Maple was tied into this line.)

97-4167 1-1097 415 S. Sycamore - Pudgett