

S.S. No. 8 - 1908

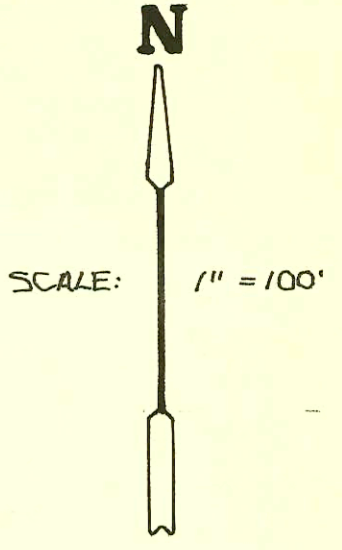
RECONNECTIONS

STATION	ADDRESS	DIRECTION
4+39.1	124 S. Seneca	South
4+34.8	1029 W. Douglas	North
4+09.7	1019 W. Douglas	North
3+82.2	1017 W. Douglas	North
3+59.7	1015 & 1011 W. Douglas	North
3+30.6	1009 W. Douglas #A+B	North
3+05.4	1007 W. Douglas	North
2+62.2	1003 W. Douglas	North

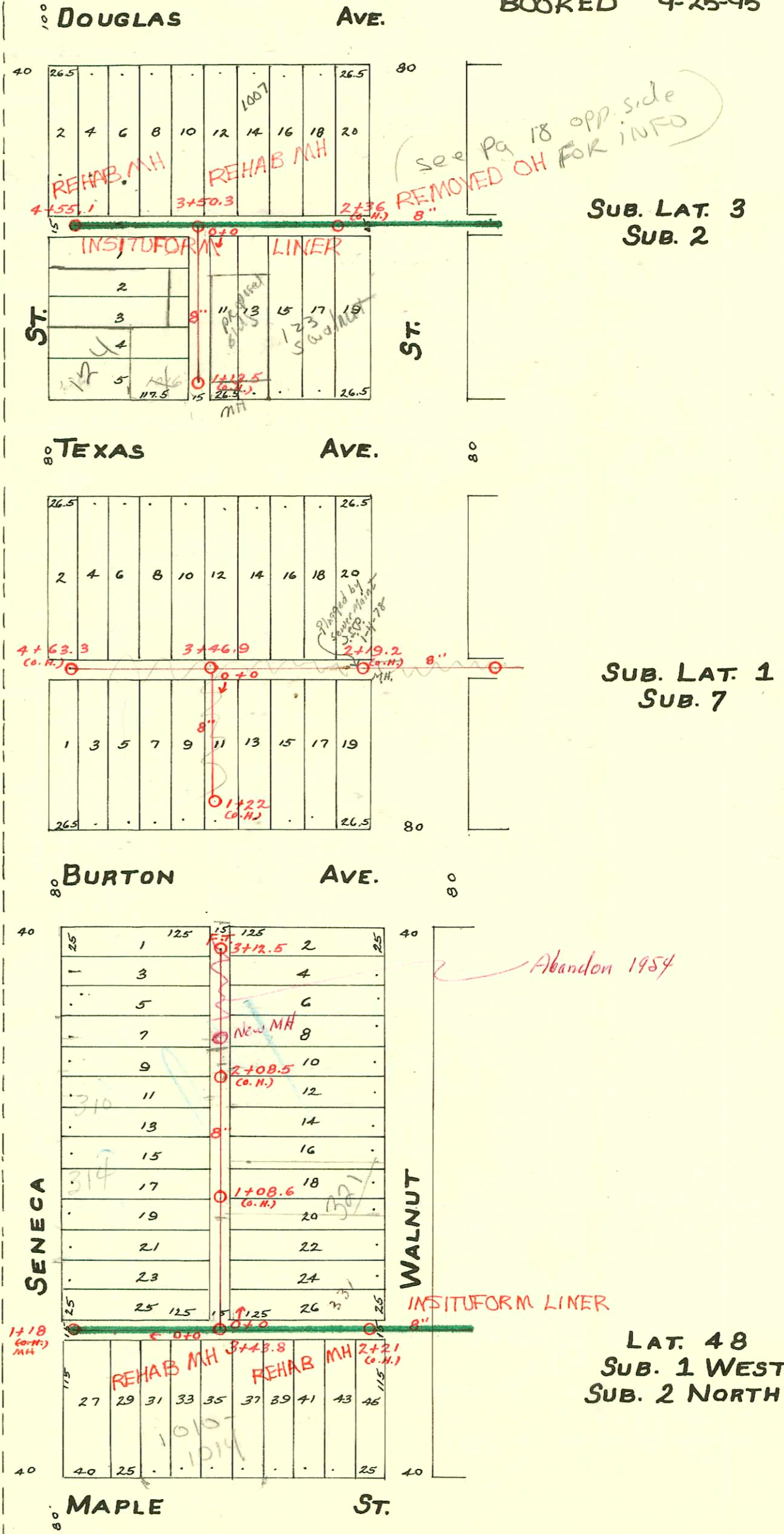
SWR 2001-0342 12101 - Sewer Maint Div.
6" sch 40 - PVC saddle - 1-6" trap - Concrete Alley CUT

SWR 2002-00883 3125102 - AAAH NO LEAKS
4" PVC - 2 TWIN CO, 2H 22, 1H 45 Tied
5' from main, 2 KICKBUTS, PAVED ALLEY CUT
Trap

TRAP AREA



1995 SANITARY SEWER REHABILITATION PROGRAM - PHASE III
PROJ. NO. N/A (621078)
BUILT BY INSITUFORM PLAINS, INC.
BOOKED 9-25-95 FROM AS BUILTS



RECONNECTIONS

STA.	ADDRESS	DIRECTION
2+83.7	331 S. Walnut	North
2+62.4	1006 W. Maple	South
2+40.1	1002 W. Maple	South
0+87.5	1020 W. Maple	South
0+41.9	1016 & 1018 W. Maple	South

1993 SANITARY SEWER REHABILITATION PROGRAM - PHASE I
PROJ. NO. 468-82348 (632006)
BUILT BY INSITUFORM PLAINS, INC.
BOOKED 5-12-94 FROM AS BUILTS

CONSTRUCTION RECORD

SERVICE RECORD

STATION	ELEVATION		Depth	MANHOLE	4-INCH "Y" BRANCHES		No. of Permit		House Number		DATE OF PERMITS	
	Ground	Grade			North West	South East	North West	South East	North West	South East	North West	South East
Bet. Texas & Burton, So. from Alley				1+22 (o.H.)	1+19.5							
1	111.58	108.34	3.24		1+09							
					0+83.5							
					0+58							
0	111.72	107.86	3.86	0+0	0+35							
E. & W. Alley So. of Douglas				4+55.1								
	112.26	108.30	3.96		4+48.5	4+38.5	#101		1029 W. Douglas		3-24-37	
					4+133	3+20.5	#32				1-25-11	
4	112.36	108.19	4.17		4+07		#526		1021 W. Douglas		9-16-10	
					3+80		#1880		1015 W. Douglas		1-15-45	
				3+50.3	3+57		#879				12-7-20	
					3+26.5		#880				12-7-20	
3	112.06	107.99	4.07		3+00.5		#573		1011 W. Douglas		10-19-10	
					2+70	2+82.5	#572		1009 W. Douglas		10-19-10	10-20-10
					2+57.5	2+62	#185	#12	119 Walnut		4-1-10	11-26-13
2	111.78	107.79	3.99		2+19.3		#121		1008 W. Douglas		2-20-20	2-3-09
Bet. Seneca & Walnut, S. from Alley So. of Douglas				1+13.5 (o.H.)	1+11.5	1+09	#1120	#42328	1016 Texas		11-25-21	11-26-73
1	111.30	108.41	2.89		0+86	0+83.5	#166	#35704	1016 Texas		5-27-46	7-31-72
					0+63	0+60.5	#127	#1432	1165 Seneca		2-24-26	10-27-22
					0+37.5	0+35						
0	111.80	107.45	4.35	0+0	0+11.5	0+09						
Line bet. Texas & Burton				4+63.3 (o.H.)	4+58.5							
4	111.50	107.85	3.65		4+36							
					4+10.5							
				3+46.9	3+59							
3	111.53	107.55	3.98		3+25							
					2+99.5							
					2+73.5							
2	111.85	107.25	4.60	2+19.26 (o.H.)	2+25							
Line bet. Walnut & Seneca, So. from Burton				3+12.5 FT.	3+06.5	3+04	#577	#363	315 S. Walnut		9-11-09	8-1-12
3	111.63	107.88	3.75		2+91.5	2+81	#19		308 S. Seneca		2-4-09	
					2+68	2+65.5	#339		305 S. Seneca		6-8-09	
					2+42	2+39.5	#364		314 S. Seneca			8-1-12
2	110.97	107.48	3.49		2+14	2+21.5	#426		308 S. Seneca		12-19-11	
					1+91	1+88.5						
					1+65.5	1+63	#716		311 S. Walnut		8-24-27	
					1+39.5	1+37	#361		314 S. Seneca		7-10-20	
1	110.69	107.08	3.61		1+16.5	1+14	#562	#3890	312 S. Walnut		7-10-20	2-21-51
					0+91	0+88.5	#290				6-16-15	
					0+65	0+62.5	#1448	#500			10-30-22	8-14-18
0				0+0	0+17	0+14.5	#501				8-14-18	
Line No. of Maple, E. from Seneca				1+18 (o.H.)		1+13.5	#476		334 S. Seneca		7-31-09	
1	110.08	106.88	3.20			0+90.5	#2867		1020 W. Maple		3-28-46	
						0+65	#907				10-24-27	
						0+39.5	#330				5-27-14	
0				0+0		0+14.5						
Line N. of Maple, W. from Walnut				3+43.8		3+36	#329				5-27-14	
3	110.72	106.60	4.12			3+16						
						2+85	#1837				8-12-24	
						2+59.5						
						2+36.5	#12140		1002 W. Maple		1-5-60	
2	110.80	106.40	4.40	2+21 (o.H.)	2+11		#232		1002 W. Maple		5-20-12	

MC #22578 1020 W. Maple 2-9-81 (Leag) 0+00 W (top 86.6' W of 0+00)
 #2496-115 S. Walnut - Henning - 12-20-89 - (2499.3)

#2420 - Top - 1029 W. Douglas - 6-17-40 - Chas. Callison (Top at 4+57.1)
 #478 - Top - 113 S. Walnut - 9-1-49 - Riggs P/bq.
 #3403 - Top - 311 S. Walnut - 2-21-50 - Baker P/bq.
 #6107 - Top - 301 S. Walnut - 8-11-53 - Kendall P/bq.
 #6108 - 8" Stop N. - 3+12.8 - 8-11-53 - Kendall P/bq.
 #17377 Seal off 310 S. Seneca - K. M. Dunley - 7-10-63
 B2065 Seal off 316 S. Seneca - Frederick P/bq - 10-1-64

#2496-115 S. Walnut - Henning - 12-20-89 - (2499.3)
 #27025-215/91 1012 W. Maple - Tim Lubbers - 27' x 9" MH
 #921774-7 84/121014 W. Maple - Tim Lubbers - (3+36.8 top 6" clay