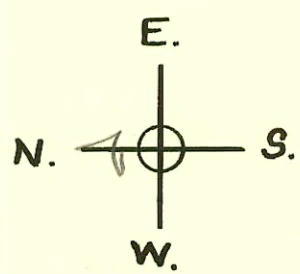
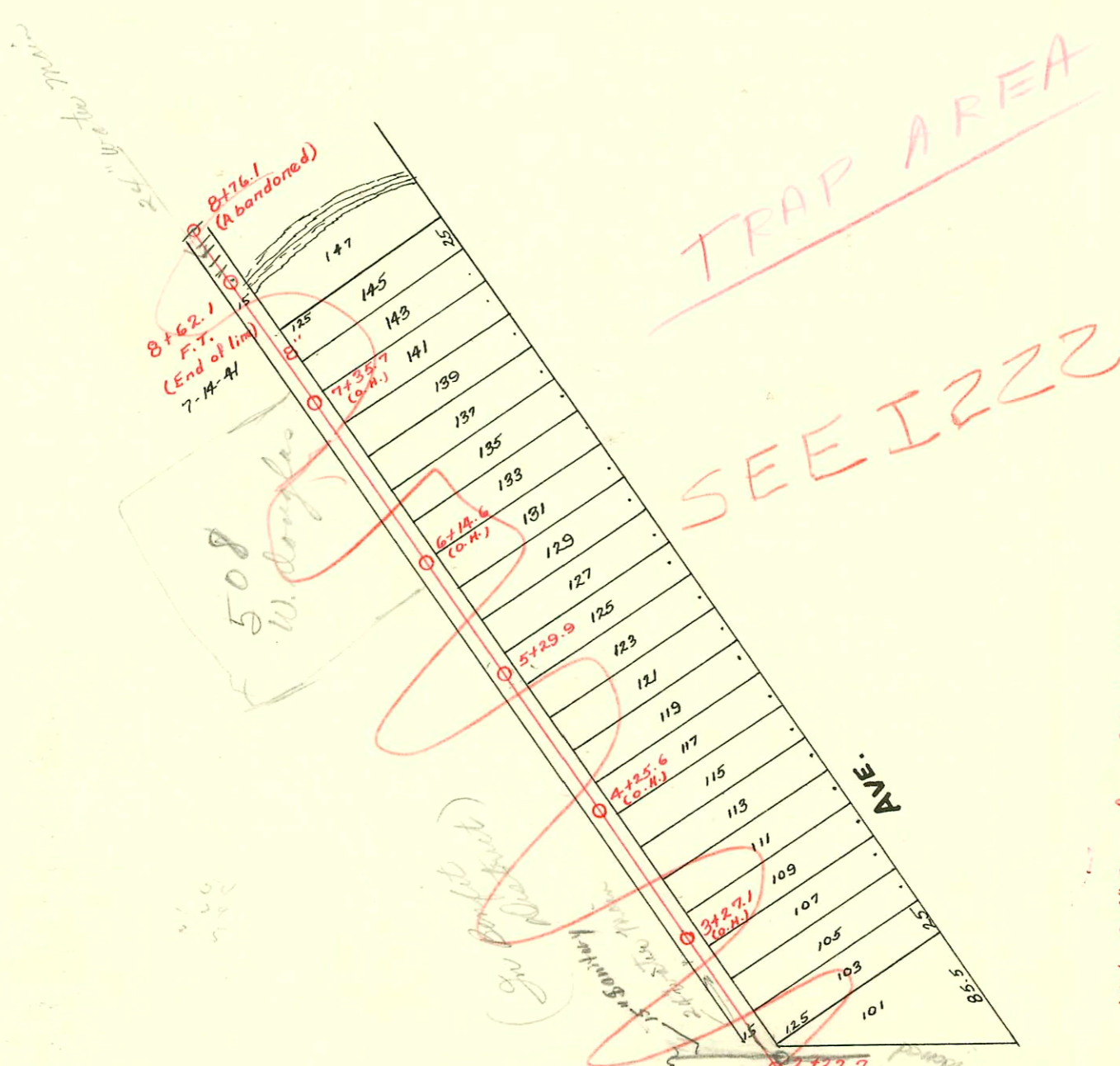
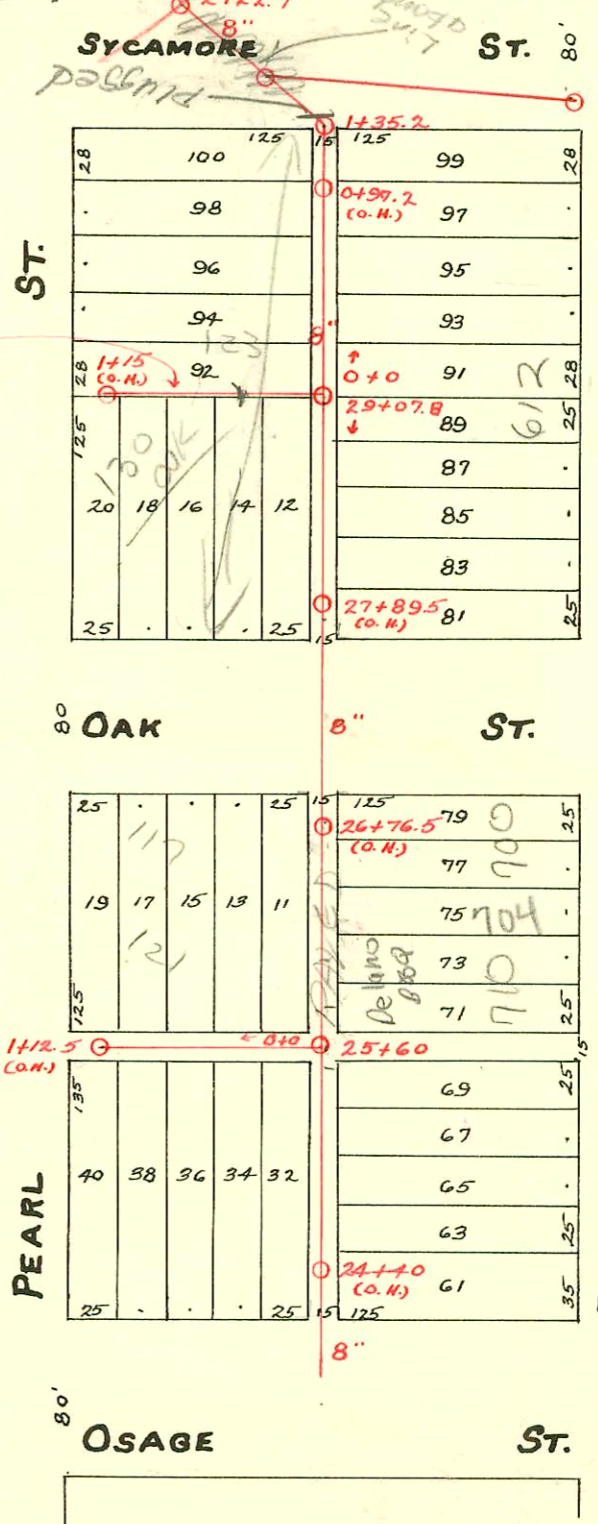


S.S. No. 8-1908



152' of 6" Pipe from C.B. to M.H.  
Siphoning Hospital Sewer under San.  
Sewer. Water from C.B. empties into  
Hospital Sewer at M.H.



Sewer destroyed from 0+45 to  
1+15 by owner of lots 12 to 20  
4/3/56 J.H.E.

2000-00400-700 W Douglas 21/100-Rect. Rootr  
4" SCH 40, Paved Alley Cul, 4' trap, 1V22

SWR 2004-00498 02/26/04 710 W Douglas  
M.F. Todd Prop.

SWR 2004-00499-02/26/04 710 W Douglas  
(Green FWH) M.F. Todd Prop.

CONSTRUCTION RECORD						SERVICE RECORD						
STATION	ELEVATION		Depth	MANHOLE	4-INCH "Y" BRANCHES		No. of Permit		House Number		DATE OF PERMITS	
	Ground	Grade			North West	South East	North West	South East	North West	South East	North West	South East
1	110.10	107.73	2.37	1 + 15 (G.H.)	0 + 98	0 + 95.5						
					0 + 72.5	0 + 70						
					0 + 47.5	0 + 45						
					0 + 22.5	0 + 20						
0	110.11	107.53	2.58	0 + 0 = 29 + 07.8 on Lat. 25			#2718	#463	121 N. Sycamore		9-29-52	7-31-18
1	110.06	107.73	2.33	1 + 12.5 (G.H.)	1 + 10	1 + 07.5						
					0 + 87.5	0 + 85						
					0 + 62.5	0 + 60	#232	#864	115 N. Oak		2-19-24	8-5-25
					0 + 37.5	0 + 35						
					0 + 12.5	0 + 10	#4846	#4115	116 N. Osage	115 N. Oak	4-15-53	2-14-53
0	110.16	107.53	2.63	0 + 0 = 25 + 60 on Lat. 25								
				8 + 76.1 (Abandoned)	8 + 66.4							
				8 + 62.1 F.T. End of line	8 + 32.7							
8	111.78	108.33	3.45		8 + 02.4		#1276					6-3-24
					7 + 76.8							
					7 + 59.2							
					7 + 26.2		#874					4-18-24
7	111.77	108.23	3.54		7 + 00.7		#801					1-18-10
					6 + 75.7		#279		528 W. Douglas			5-11-09
					6 + 71		#187					3-15-20
					6 + 50.7							
6	111.27	108.13	3.14		6 + 25.2		#1476		500 W. Douglas			2-19-47
					5 + 99.7		#384					4-25-11
					5 + 74.7							
					5 + 54.7		#635		520 W. Douglas			5-29-29
5	110.64	108.03	2.61	5 + 29.9	5 + 24.7		#847		540 W. Douglas			8-11-28
					4 + 92.2							
					4 + 73.7		#278		536 W. Douglas			4-19-27
					4 + 48.7		#1559					11-17-22
4	110.74	107.93	2.81		4 + 23.2							
					3 + 98.2							
					3 + 72.7		#420		548 W. Douglas			5-19-26
					3 + 46.2		#1207		560 W. Douglas			11-15-28
3	110.76	107.83	2.93		3 + 20.2							
					2 + 97.7		#884					7-24-22
					2 + 69.7		#649					7-20-11
					2 + 46.1							
2	109.59	107.73	1.86	2 + 22.7	2 + 25.2		#1680		120 W. Sycamore			9-30-70
				1 + 35.2	N.		#499		109 N. Sycamore			11-14-23
							#517		607 W. Pearl			6-22-20
1	108.79	107.63	1.16	1 + 17.2	0 + 94.7	0 + 92.2	#857					11-21-17
					0 + 68.2	0 + 65.7						7-6-18
					0 + 43.7	0 + 41.2						
					0 + 16.2	0 + 13.7						
0	109.76	107.53	2.23	0 + 0 = 29 + 07.8 on Lat. 25								
29	109.76	107.52	2.24	29 + 07.8	29 + 04.5		1999-01220		612 W. Douglas			11-18-99
					28 + 75.5		#380					4-16-29
					28 + 55		#339					4-16-23
					28 + 23		#370		116 N. Oak			5-12-27
28	112.92	107.42	5.50		28 + 04.5							
					27 + 80		#1051		624 W. Douglas			5-7-24
27	111.84	107.32	4.52				205-05400					
					26 + 74		048480		780 W. Douglas			2-11-02
					26 + 49		#782		702 W. Douglas			2-26-75
26	113.08	107.22	5.86		26 + 24		#527					6-28-29
					25 + 99		#147		712 W. Douglas Laundry			7-25-17
					25 + 79		#230					3-18-10
					25 + 50		#2980					2-19-23
25	113.11	107.12	5.99	25 + 60	25 + 24		#394		718 W. Douglas			11-6-50
					24 + 99							7-3-18
					24 + 76							
					24 + 74		#737					10-9-17
24	113.59	107.02	6.57		24 + 25.5							
23	(See Page 25)											

4054 (117 N Oak) 9-2-81 Al Henning

46920 123 N Sycamore - 11-5-82 - Miller Bauers 0700 F (3'17 - 0103.0)

- Tap 130' from M.H. 1435.2 - #293 - 3-31-21
- #309 - Tap - 118 N. Osage - P.C. Fish - 5-28-31
- #137 - Tap - 116 N. Sycamore - Creed Plummer - Skinnell - 9-9-32
- #391 - Tap - 536-556 W. Douglas - Brodie Plbg. - 7-29-37
- #1664 - Tap - 720 W. Douglas - R. La Foy - 6-19-39
- #1295 - Tap - 116 N. Sycamore - 11-12-43 - Brodie Plbg.
- #2032 - Tap - 130 N. Oak - 5-2-45 - Callison Plbg. Co.
- #1906 - Tap - 129 N. Oak - 8-10-50 - C.G. Coleman
- #3686 - 6 on 8 wye - 722 W. Douglas - Al Henning - 2-7-57
- 14769 - Tap - 115 N. Oak - Daniel Williams - 10-3-61 (26+73.5)
- #012663 - Tap - 508 W. Douglas - Schuster Plbg. - 2-6-69 (6+66.4) (-In Benefit Trust)