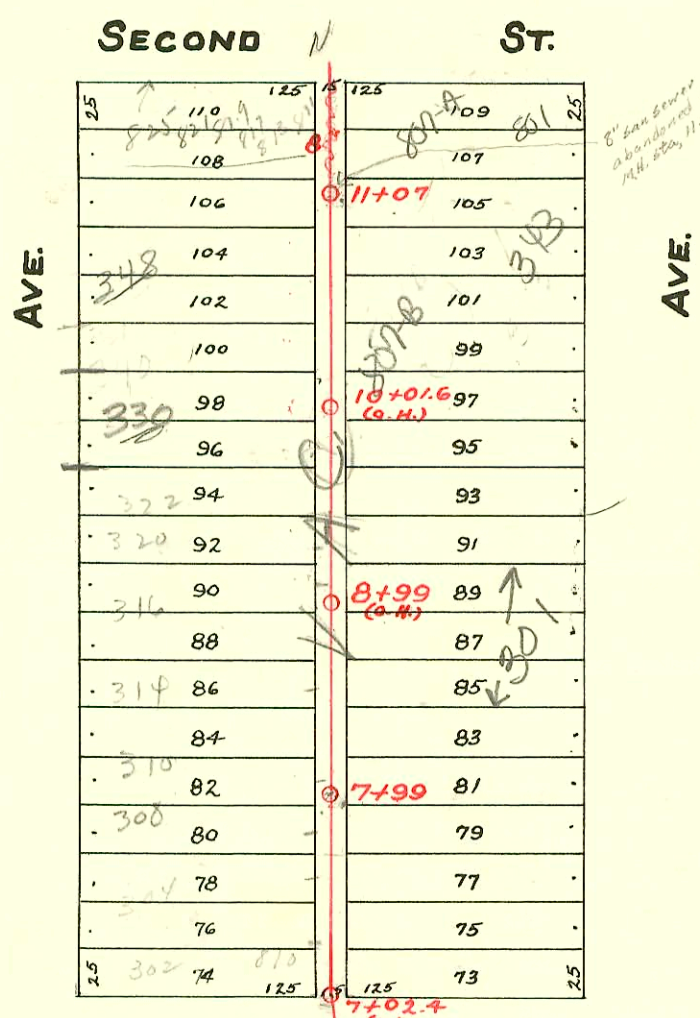
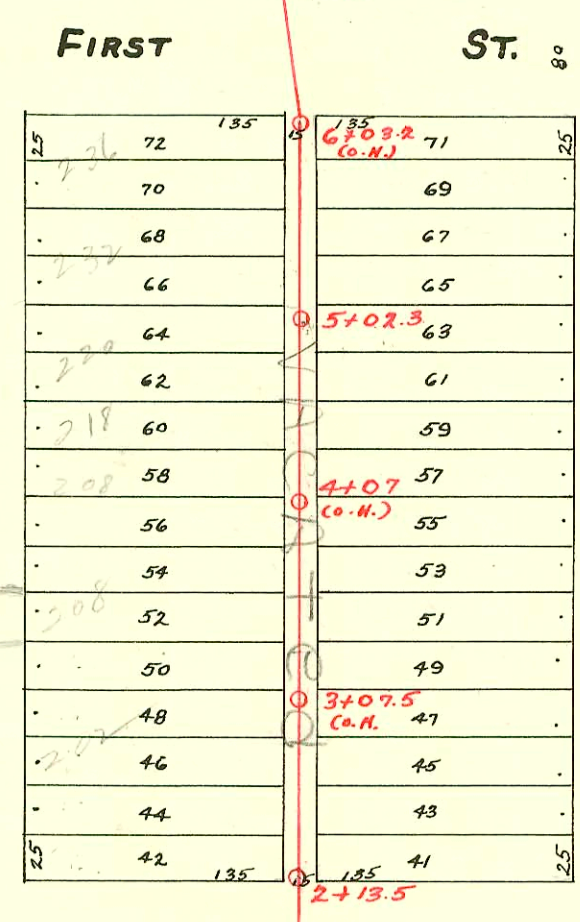


# S.S. No. 8 - 1908



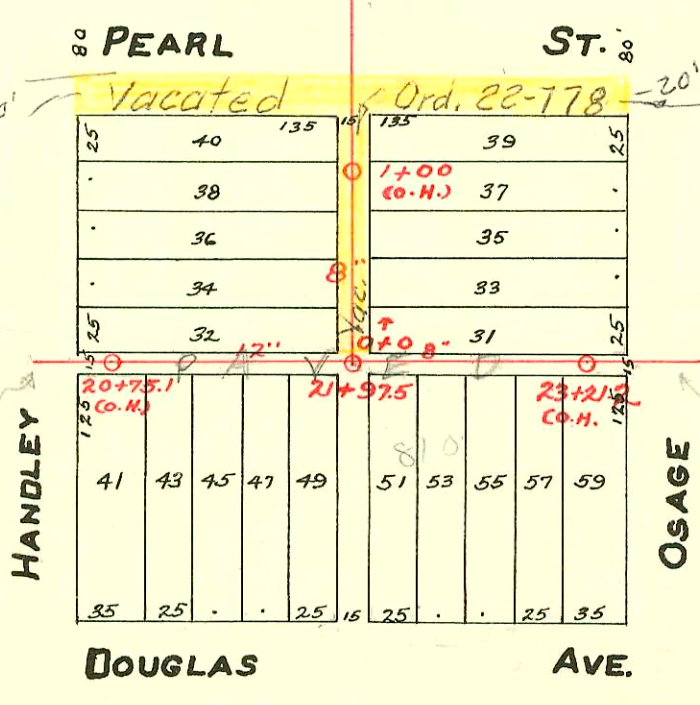
*San Diego  
Abandoned Gravel  
M.H. 22, 11+07 March  
25.8*

**TRAP AREA**



**PEARL ST.**  
20' vacated Ord. 22-778  
Portion of St. & Alley vacated  
Ord. No. 22-778

See page 27



Page 24

### CONSTRUCTION RECORD

### SERVICE RECORD

STATION	ELEVATION		Depth	MANHOLE	4-INCH "Y" BRANCHES		No. of Permit		House Number		DATE OF PERMITS	
	Ground	Grade			North West	South East	North West	South East	North West	South East	North West	South East
	Continued on Page 26				11+55	11+52.5						
11	108.35	107.91	.34	11+07	11+30	11+27.5	#868		842 N. Handley		8-6-25	
					10+83	10+80.5	07233	#307	355 N. Osage		12-13-35	
					10+57.5	10+55			807 W. 2nd		12-21-82	
10	107.81	107.81	.00		10+32.75	10+30	7233	#8	807 W. 2nd	353 N. Osage	12-21-82	2-10-34
					10+07.0	10+04.5			338 N. Handley		12-17-62	
					9+81	9+78.5	#551		350 N. Handley		6-25-26	
					9+55.5	9+53	C395631		318 N. Handley		6-19-73	
9	108.50	107.71	.79		9+30.5	9+28	#472		316 N. Handley		9-17-31	
					9+04.5	9+02	#719		317 N. Osage		4-7-24	58-21-48
					8+79	8+76.5	#123				12-19-29	11-2-34
					8+53	8+50.5	#1264				6-11-69	
					8+28	8+25.5					4-9-24	2-17-70
8	108.70	107.61	1.08	7+99	8+07.5	8+05	#758	C18027	310 N. Handley	309 S. Osage	6-11-69	
					7+77	7+74.5	#838		306 N. Handley		6-11-69	
					7+57	7+48.5	#216		304 N. Handley		2-16-24	
					7+25.5	7+23	#77		302 N. Handley		4-6-62	
7	108.25	107.51	.74		6+97.5	6+95	#217				2-16-24	
6	109.53	107.41	2.12		6+00.5		#84		238 N. Handley		7-26-33	
						5+98						
					5+69.5	5+67						
					5+41	5+38.5						
5	109.26	107.31	1.95	5+02.3	5+18	5+15.5	#215		232 N. Handley		4-15-66	
					4+94	4+91.5					2-16-24	
					4+69	4+66.5	#555				6-15-11	
					4+48.5	4+46	#462	#1848	218 N. Handley		5-27-21	12-15-23
					4+30.5	4+28	#463				3-6-24	
4	113.73	107.21	6.52		4+17.5	4+15						
					3+95	3+92.5						
					3+71.5	3+69		#780		201 N. Osage		3-31-38
					3+48.5	3+46						
3	114.03	107.11	6.92		3+23	3+20.5	#209		202 N. Handley		3-18-26	
					2+98	2+95.5						
					2+73	2+70.5	#1831				2-13-23	
					2+47.5	2+45	#143				3-30-09	
					2+22.5	2+20	#144	#392			3-30-09	8-11-15
2	113.55	107.01	6.54	2+13.5								
					1+32.5	1+30.5	#2109		128 N. Handley		2-28-40	
1	112.82	106.91	5.91		1+12.5	1+10						
					0+87.5	0+85	#19101	#C-78	120 N. Handley	119 N. Osage	8-19-67	1-15-72
					0+62	0+59.5	#592	#489			10-29-22	9-5-13
					0+36.5	0+34						
					0+11	0+08.5						
0	113.19	106.81	6.38	0+0 = (21+97.5)								

23	113.19	106.92	6.27	23+21.2 (O.H.)	23+32		#569		802 W. Douglas		8-7-17	
					23+11							
					22+71.2	22+81.5	#663		111 W. Osage		12-1-10	
					22+58.5	22+36						
22	113.01	106.82	6.19		22+12.5							
				21+97.5	21+79		#4018		818 W. Douglas		8-25-65	
					21+61							
					21+35.5		#677					
21	113.09	106.72	6.37		21+10.5							
					20+85							
20	112.32	106.62	5.70	20+75.1 (O.H.)	20+60		#25				2-13-12	
19 (See Page 27)												

C60614-240 N Handley - 4-4-77 - Tap (5+90.4)  
 C58149 - 202 N. Handley - 10-13-76 - Tap (2+58)  
 C23207-304 N. Handley - James Kooley - 3-11-71 - Tap (7+92)  
 Deal off #6192-340-42 N. Handley - Riggs Kelly - 12-19-67 (from line across) the water N. Pl.  
 #1108 - Tap - 202 N. Handley - 12-16-27.  
 #302 - Tap - 115 N. Osage - 4-4-29 - C. A. Baker.  
 #214 - Tap - 810 W. 1st - 2-11-43 - Simmons Plbg. #83037 deal off 810 W. 1st - Richard Hanna - 4-6-65  
 #1103 - Tap - 313 N. Osage - 12-13-46 - Wichita Plbg. Co. (last wire + 6.10 of S. Pl.)  
 #198 - Tap - 201 N. Osage - 3-1-54 - Nelson Plbg.  
 #1762 - 818 W. Douglas - 12-20-48 - E. B. Brannon - Used old connection.  
 1797 - 810 W. Douglas - 7-31-87 - Don Douglas - repair  
 18797 - 810 W. Douglas - 7-31-87 - Don Douglas - repair