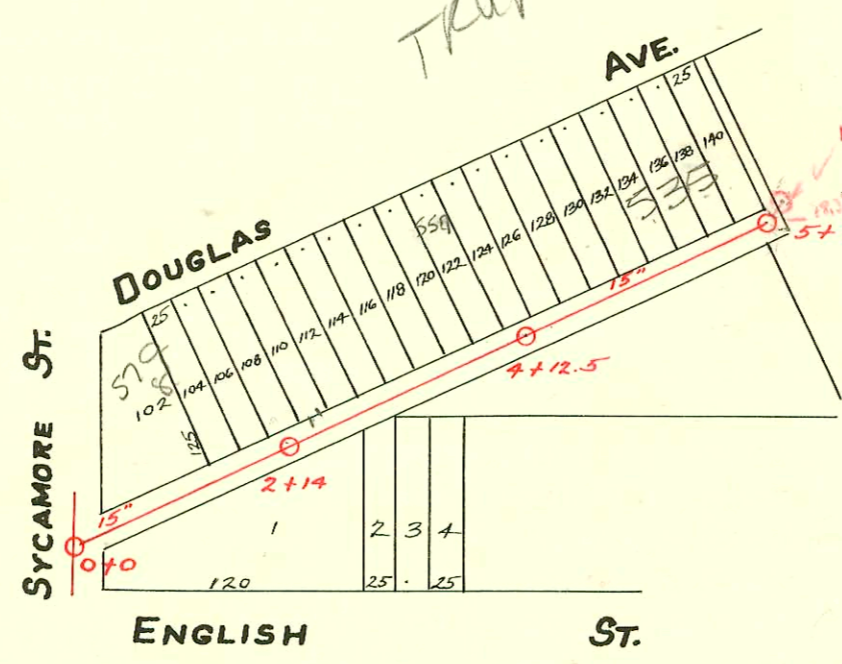


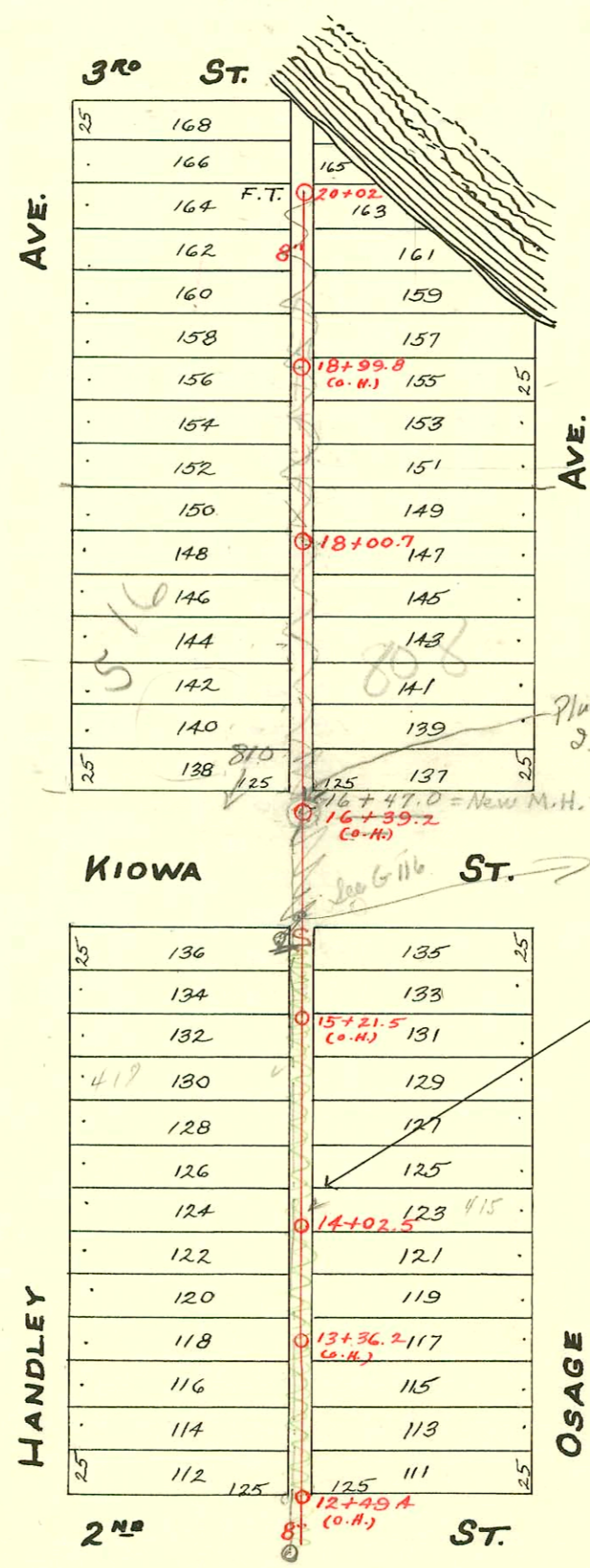
TRAP Reqd because of 15" Main



LINE CONTINUES EAST ON PAGE 23
(Line East from 5+97.3 abandoned 1964)

LAT. 1 - S.S. No. 21
W.B. CARTER - 1931.

TRAP AREA



S.S. No. 8 - 1908

Plugged 6-4-75
J.F.P.

Note: This portion has been abandoned. See BK. G - Page 116 for reconstruction.

Ref
SUT 2002-02179 8/12/02 579 w Douglas - but Scott 4" PVC, TWIN CO (club) Tied to claytile - used 43' plastic

CONSTRUCTION RECORD

SERVICE RECORD

STATION	ELEVATION		Depth	MANHOLE	4-INCH "Y" BRANCHES		No. of Permit		House Number		DATE OF PERMITS	
	Ground	Grade			North West	South East	North West	South East	North West	South East	North West	South East
0+0	111.58	102.50	9.08	0+0								
0+34 = E. L. Sycamore					0+80							
1+0	111.04	102.70	8.34		1+23	1+26						
					1+49							
					1+76	1+79						
2+0	110.85	102.90	7.95		2+06							
				2+14	2+25							
					2+45							
					2+85		#54		565 W. Douglas		5-18-33	
3+0	110.33	103.10	7.23		3+10							
					3+51							
4+0	110.79	103.30	7.49	4+12.5	3+70							
					4+67.5							
5+0	111.19	103.50	7.69		5+03							
					5+33	5+36						
					5+55.5	5+58.5						
5+97.3	111.84	103.68	8.16	5+97.3	5+78.5	5+81.5						

Note: 6+09.3 point where depot sewer angles to this sewer.

20	110.21	108.81	1.4	20+02.0 FT.	19+89.5	19+87						
					19+69	19+66.5						
					19+46	19+43.5						
19	109.51	108.71	0.8		19+23	19+20.5	#1030		536 N. Handley		9-18-25	
					18+97.5	18+95	#2010		528 N. Handley		9-4-24	
					18+72	18+69.5	#1676		524 N. Handley		4-18-66	
					18+46.5	18+44	#1355				7-21-24	
18	109.01	108.61	0.4	18+00.7	18+21	18+18.5	#356		516 N. Handley		12-23-66	
					17+95.5	17+93	#1213				5-1-26	
					17+72.5	17+70	#2297		512 N. Handley		12-21-66	
					17+47	17+44.5			810 Kiowa		5-26-24	
17	108.71	108.57	0.2		17+21.5	17+19	#1733		815 Kiowa		10-13-24	
					16+96	16+93.5	#1133		436 N. Handley		3-9-48	
16	110.41	108.41	2.0	16+47.0 (manhole)	16+75.5	16+72	#91		815 Kiowa		7-11-46	
					15+68	15+65.5	#729		418 N. Handley	421 N. Osage	1-24-67	
					15+42.5	15+40	#436		408 N. Handley	417 N. Osage	3-24-26	8-25-26
					15+16.5	15+14	#240		407 N. Osage	415 N. Osage	3-26-29	4-27-28
14	109.11	108.21	0.9	14+02.5	14+91	14+88.5	#1084		406 N. Handley	802 W. 2nd	3-26-29	9-16-43
					14+65.5	14+63	#423		816 W. 1st	403 N. Osage	4-24-28	
					14+40	14+37.5	#1382		417 N. Handley	417 N. Handley	4-24-28	4-27-28
					14+15.0	14+12.5	#1698				3-26-29	9-16-43
					13+87.5	13+85	#1455				4-24-28	
					13+62	13+59.5					4-24-28	
					13+34	13+31.5					4-24-28	
13	108.91	108.11	0.8		13+08.5	13+06	#1085		802 W. 2nd	403 N. Osage	6-12-24	3-14-51
					12+89	12+80.5	#424		816 W. 1st	417 N. Handley	7-23-24	4-24-28
					12+57.5	12+55					6-21-24	
12	108.50	108.01	.49	12+49.4 (O.H.)								
11	108.50	108.01	.49									

2001-01004-4/26/01-535 W Douglas B+L-4" SCH 40 No Hsmt- Replace all but Lower 15', 4" trap installed, 2/22, 1/4/5

99-00824 10-11-99 581 W Douglas (Clean portion of Bldg known as 120 S Sycamore) - Clean water

96-11238-7 7-11-96 516 N Handley - Henning

30 049727 - 808 Kiowa - Krablin - 6-2-75 (16+43) Tap
 50 C42386-500 N Handley - 11-26-73 - Al Henning (sealed in north pty of Kiowa n of 16+47)
 #214-810 W. 1st - Simmons Pibq. - 2-11-43
 #4426-561 W. Douglas - Brodie Pibq. - 3-12-53 - Tap
 #8234 525 W. Douglas - Al Henning 10-7-58 Tap. M.H. 5+91.3
 #1318 Tap 511 W. Douglas (church) Ripetier + Assoc. 5-28-64 (O.H. 5+97.3)
 #17837 557 W. Douglas Rep. 2/23/87 C. Lee Trade (Replaced 41' of clay tile from Bldg out 41' - still no record of conn to main)