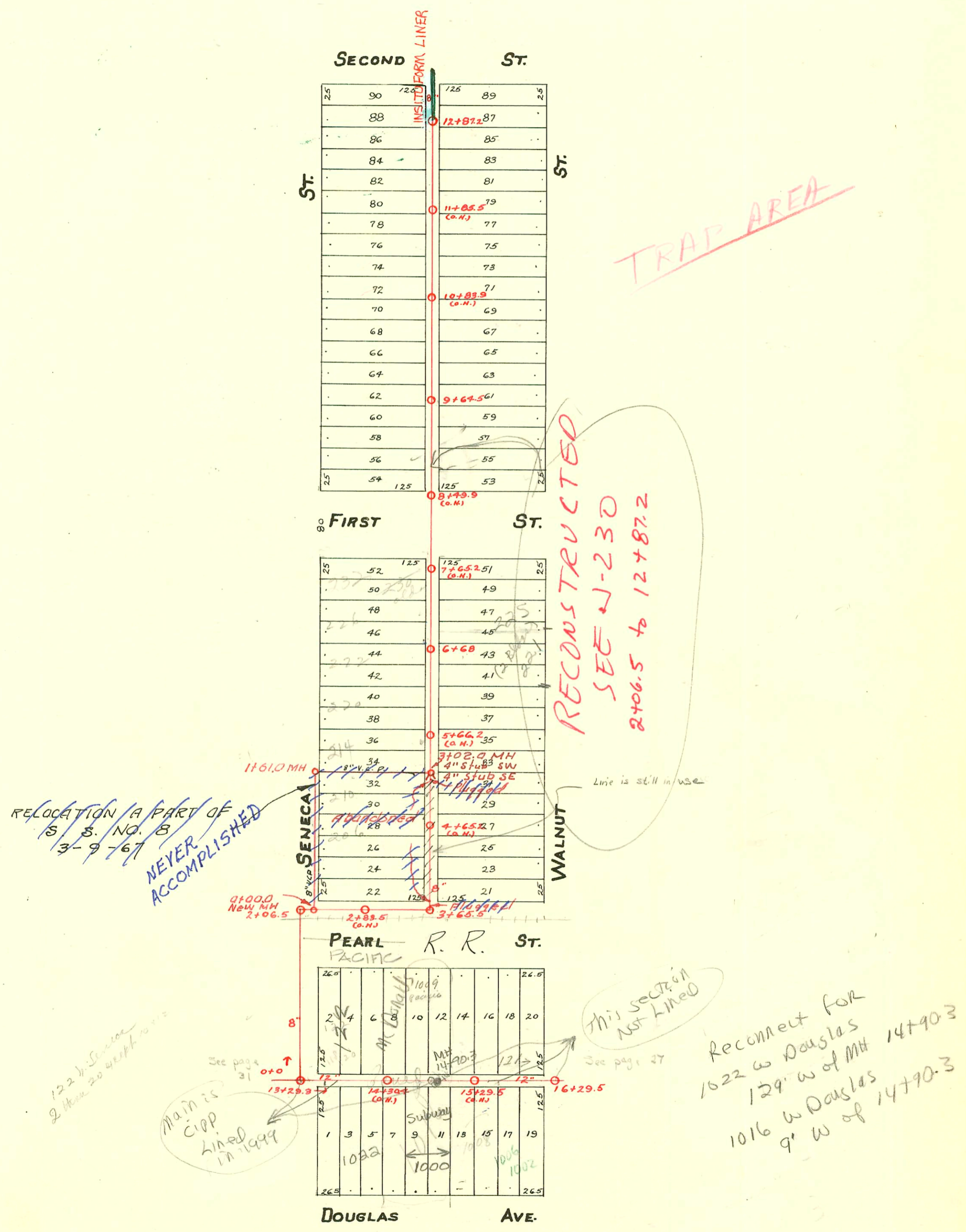


S.S. No. 8- 1908

1994 SANITARY SEWER REHABILITATION PROGRAM-PHASE I
 PROJ. NO. 468-87399 (623124)
 BUILT BY INSITUFORM PLAINS, INC.
 BOOKED 2-16-95 FROM AS BUILTS



76-8297 5-29-96 122 W Seneca - playground for McDonald's
 2000-01052-5-1-00 1002 W DOUGLAS AVE - slo w/ concrete 22' E of MH ON PL BY McCLUNG'S
 2001-01608 7/2/01 - Todd Plbg - City Wye Repair 6" Predco - 4" SCH 40 24.8' E of MH 14+90.3 (15+15.1) trap, 2 TWINCO,
 1-4" WYE, 1H22, 1V45, 3H45 NOTE from inspector Young - 2nd slo was 34' E of MH 14+90.3 (15+24.3)

CONSTRUCTION RECORD

SERVICE RECORD

STATION	ELEVATION		Depth	MANHOLE	4-INCH "Y" BRANCHES		No. of Permit		House Number		DATE OF PERMITS	
	Ground	Grade			North West	South East	North West	South East	North West	South East	North West	South East
Continued on Page 30												
13	110.07	107.25	2.82		13+29.4	13+27.9	#523		336 N Seneca		12-6-63	
					13+06	13+03.5	#17658		344 N Seneca		1-16-70	
				12+87.2	12+81.5	12+79	#159	#549			2-11-24	3-25-24
					12+56.5	12+54	#756				2-24-19	
12	109.84	107.15	2.69		12+31	12+28.5	#555	#3323	328 N Seneca	1005 W Walnut	4-17-50	2-15-50
					12+05.5	12+03	#1578	#3837	332 N Seneca		11-1-29	2-19-51
					11+83.5	11+81						
					11+57	11+55.5		#460				3-12-24
					11+34	11+31.5						
11	109.85	107.05	2.80		11+07.5	11+05	#95	#421	336 N Seneca		2-1-24	3-6-24
					10+82.5	10+80	#513				3-20-24	
					10+59.5	10+57		#421	317 N Walnut			7-18-46
					10+34	10+31.5		#39	319 N Walnut			1-23-24
10	110.10	106.95	3.15		10+09	10+06.5	#364		318 N Seneca		6-16-09	
					9+83.5	9+81	#1190	#842	356 N Seneca		8-28-19	9-12-20
				9+64.5	9+68.5	9+56		#82				2-18-21
					9+32.5	9+31	#1191	#302	354 N Seneca		8-28-19	2-26-24
9	110.88	106.85	4.03		9+10.5	9+08						
					8+85.5	8+83	#1220	#581	303 N Walnut		9-12-19	6-26-25
					8+60.2	8+58						
8	111.00	106.75	4.25		7+58	7+55.5	#1765	#827	330 N Seneca		5-3-60	7-14-22
					7+32	7+29.5	#15136		332 N Seneca		4-5-62	
7	114.40	106.65	6.75		7+07	7+04.5	#920		226 N Seneca		4-23-79	
					6+79.5	6+77		#587	225 N Walnut		5-13-21	10-31-10
				6+68	6+55.5	6+53	#3285	#5742	221 N Walnut		2-1-24	9-4-51
					6+29.5	6+27		#245	225 N Walnut			10-16-35
6	113.93	106.55	7.38		6+07.5	6+05	3284		220 N Seneca		5-13-81	
					5+81.5	5+79	#382				10-19-22	
					5+59.5	5+57	#177		214 N Seneca		2-12-24	
					5+32.5	5+30	#17302	#691	214 N Seneca		6-3-69	5-8-23
5	113.93	106.45	7.48		5+07.5	5+05		#781			8-27-21	
					4+82.5	4+80	#246	#446			4-1-11	5-5-22
					4+57.5	4+55	#259				5-6-09	
					4+32.5	4+30						
4	113.24	106.35	6.89		4+07	4+04.5		#2478	201 N Walnut			11-26-45
3	113.35	106.25	7.10	3+65.5	3+81.5	3+79						
2	114.13	106.16	7.97	2+06.5								
1	113.94	106.05	7.89									
0				0+0				14575	125 N Seneca			8-28-25

16	113.10	106.22	6.88		16+29.5	16+17.5	16+15					
					15+94.5	15+92		#337	1002 W Douglas		5-10	6-8-10
					15+65.5	15+63		#216	1002 W Douglas		3-14-10	4-19-17
					15+42	15+39.5						
15	113.10	106.12	6.98		15+17	15+14.5	#1290	#1456	1009 Pacific	1014 Douglas	6-4-24	10-31-22
				14+90.3	14+91.5	14+89		#1430	1016 W Douglas			17-30-19
					14+66.5	14+64						
					14+41	14+38.5		#324				3-5-23
14	113.29	106.02	7.27		14+10	14+07.5						
					13+85.5	13+83						
13	113.20	105.92	7.28	13+29.3	13+60.5	13+58	#979	#89	1018 W Douglas		8-10-22	1-13-66
12	(See Page 31)							#5934	1022 R Douglas		5-13-75	2-27-11
								#6120	Below		1-23-75	12-13-67

RELOCATION OF A PART OF S. S. NO. 8 3-9-67

0+00	106.17	0+00.0 NEW MH	
1+00			
	106.29	1+61°	Never constructed
2+00			
3+00	106.38	3+02°	4" stub SW 4" " SE

14099 (1227 Seneca) 6-25-15 Henning
 13941 (1007 Douglas) 6-4-15 Henning (asst. next to prop.) (13+76.3) 4" P.V.C.
 C20226-1217 N Walnut - 7-24-70 at Henning (15+65.5)
 C17658-344 N Seneca - top - Hawk (Ply) 1-16-70 (top 12+79.2)
 C19258-1010 W Douglas - at Henning - 12-9-64
 Tap - #122 - 1020 W Douglas - 2-25-30 - O.W. Stinnett
 Private line - #410 - 220 N Walnut - 10-14-41 - H.J. Giele
 Tap - #153 - 226 N Seneca - 12-29-42 - C. Frank McCoy
 Tap - #540 - 229 N Walnut - 8-2-48 - R. LaFoy (7+50)
 #5305 - Connected at 4+20.2 - 205 N Walnut - 5-22-53 - Simmons Pibg.
 #5306 - Setting wye - 205 N Walnut - 5-22-53
 #6561 - Tap - 1002 W Douglas - Pray Bros. - 9-23-55
 10371 - 330 N Seneca - 5-15-59 Henning
 14880 - top - 207 N Walnut - 10-26-61 - Pray Bros. (11+82.5)
 50 C53656 - 21 N Walnut - 2/10/76 - at Henning (4+31.0)
 C71497-226 N Seneca (green) 4-30-79
 19075 - 220 N Seneca - new main 9-15-87
 (Tap 5+69)
 595-934-701-1-23-95-1022 W Douglas - Replaced App 30' at alley - 4" sch 40 P.V.C.
 wye top 1 4" P.V.C. 1 1/2" C.O.
 2000-00755-3/22/00-1022 W Douglas - 4" sch 40 - Tied to
 P.V.C. stub off of P.V.C. main, 4" trap, 17" dia, 2H22