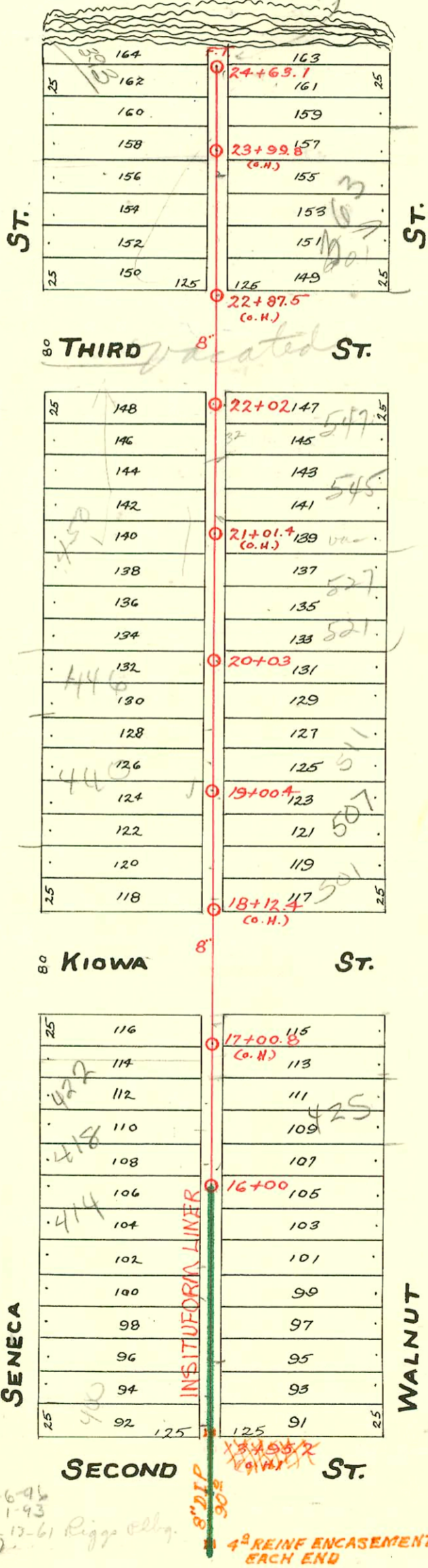


RECONNECTIONS

STA.	ADDRESS	DIRECTION
15+89.9	419 N. Walnut, Apt. #8-10	East
15+84.3	415 N. Walnut, Apt. #1-2	East
15+45.1	410 & 412 N. Seneca	West
15+34.2	411 N. Walnut	East
14+83.7	409 N. Walnut	East
14+67.3	406 N. Seneca	West
14+12	400 N. Seneca	West

S.S. No. 8- 1908

McLean (Do not give measurements from F.T. as they are incorrect. Refer to M.H. 22+02.0 for measurements both of 3rd.)



TRAP AREA

2005-03123 - 515 N Walnut - 6' x 8' sgmH
WIDHTA EX 12/1/05

96-36167
93-37597
#13960 private line com. 363 McLean Blvd. 3-1-93
(4" sch 40 wye at sta 23+80.5)
s/o @ 24+11.1

93-19541-7 7-21-93 (511 N Walnut) Lubbers -
wye 18.6' N of MH (19+19.0) 3/8" 6" clay edge of alley

96-3648-7 3-22-96 (369 N McLean) - McClung - s/o with concrete

1994 SANITARY SEWER REHABILITATION PROGRAM - PHASE I
PROJ. NO. 468-82399 (673124)
BUILT BY INSITUFORM PLAINS, INC.
BOOKED 2-16-95 FROM AS BUILTS

RECON PART 55N#8 & 55N#21
BUILT BY: UTILITY CONTR. INC.
PROJ N# DBKJ 576064
BOOKED 9-22-77 FROM CG 18

CONSTRUCTION RECORD						SERVICE RECORD						
STATION	ELEVATION		Depth	MANHOLE	4-INCH "Y" BRANCHES		No. of Permit		House Number		DATE OF PERMITS	
	Ground	Grade			North West	South East	North West	South East	North West	South East	North West	South East
	111.08	108.42	2.66	24+65.1 FT.	24+58	24+55.5						
24	111.02	108.35	2.67		24+35 24+12.5 23+87 23+77 23+61 23+33.5	24+32.5 24+10 23+84.5 23+58.5 23+31	9562 #8326 #220 9484		601 N. Walnut	10-31-83 5-11-23 10-19-83		
23	110.80	108.25	2.55		23+08 22+85 22+21	23+05.5 22+82.5 22+18.5	#350 #1187			3-3-24	8-12-47 5-22-24	
22	110.69	108.15	2.54	22+02	21+98 21+72.5 21+47	21+95.5 21+70 21+44.5			547 N. Walnut		5-15-24 5-21-24	
21	109.73	108.05	1.68		21+24 20+99 20+74 20+48.5 20+23.5	21+21.5 20+96.5 20+71.5 20+46 20+21	#804 #868 #1306		450 N. Seneca	5-28-23 10-29-46		
20	109.79	107.95	1.84		19+98 19+72.5 19+47	19+98 19+70 19+44.5	#15271 #694			9-14-46 6-9-43	4-30-24	
19	109.39	107.85	1.54	19+00.4	18+96.5 18+69.5 18+45.5 18+20	18+94 18+67 18+43 18+17.5	#59 #1801 #21607 #1468 #32857 #924 #2731		442 N. Seneca 440 N. Seneca	4-1-35	8-6-24	
18	109.08	107.75	1.33		17+13.6 16+88 16+62.9 16+37.5	17+11.1 16+85.5 16+60.4 16+35	#448 #193		507 N. Walnut 501 N. Walnut 501 N. Walnut	11-10-48 6-24-24 9-18-91 8-21-25 10-1-52		
17	110.76	107.65	3.11		16+12 15+87.5 15+63.4 15+37.7	16+9.5 15+85 15+60.9 15+35.2	#739 #1027 #1878		447 N. Walnut	3-11-24 2-13-24	7-28-24	
16	111.03	107.55	3.48	16+00	15+12 14+86.8 14+61.5 14+36	15+9.5 14+84.3 14+59 14+33.5	#776 #1307 #268 #499		418 N. Seneca 414 N. Seneca	4-8-24 6-27-19	9-25-24	
15	110.90	107.45	3.45		14+10.5	14+08	#1251 #1367		403 N. Walnut	8-26-21 6-4-24 5-9-10 11-17-16	5-31-24 6-11-24	
14	109.52	107.35	2.17									
13	(See Page 29)			13+95.2								

2002-01596
 97-16602-7 9/24/47- 400 N Seneca - Fernco, twin co, trap, 1H45, city repair, 4" Predec 165.6' S of MH
 16+00 (14+34.4)

97-1911-7 2-10-97 422 N Seneca - Henning -

9678974-7 11-13-96 485 N Walnut - McClung's

259325 - 600 N Seneca (Additional Conn) 12-30-76

#42 - Private line - 402 N. Seneca - 6-1-34 - Vernon Shellenberger.
 #1031-408 N. Seneca - 8-4-38 - W. O. Harrison - Used old connection.
 Top - #1429 - 444 N. Seneca - 4-3-39 - V. H. Patton.
 Top - #1852 - 419 N. Walnut - 12-15-44 - Collison Pibg. Co.
 Top - #5932 - 412 N. Seneca - 8-5-55
 #7090 - 6 on 8 wye - 610 N. Seneca - 12-20-55 - Joe McDonald.
 #2732 - Trailer - Private line connection - 501 N. Walnut - Lee Tade - 10-1-52
 #1347 - 600 N. Seneca - 12-29-47 - Moore-Robertson Pibg.
 #5228 - Top - 416 N. Seneca - 7-12-51 - Stigers Pibg.
 #5665 - Top - 609 N. Walnut - 8-22-51 - Fray Bros Pibg.
 #6398 - Top - 527 N. Walnut - 11-9-51 - Davidson Pibg.
 #4192 - Top - 415 1/2 N. Walnut - 2-24-53 - Ray Pibg.
 #6882 - 6 on 8 wye - Kendall Pibg. - 11-10-55
 13917 - 6 on 8 wye - 450 N. Seneca - 32-26 - Cat Pibg. - 2473

#91-32875-7 9/18/91 (50' N. Walnut) - Alvin Henning -

93-7725-7 4-13-93 414 N Seneca - Fruit House - Henning
 4" clay tile line sealed off 13' south of NPL and 42' from RPL Road.
 bldg still on line. No alley cut. see above