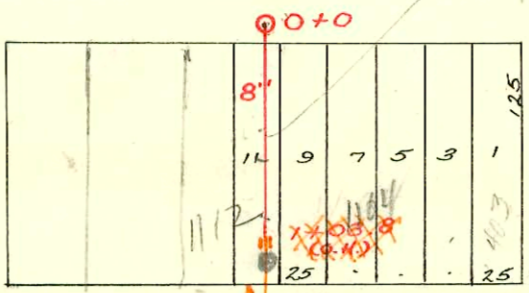
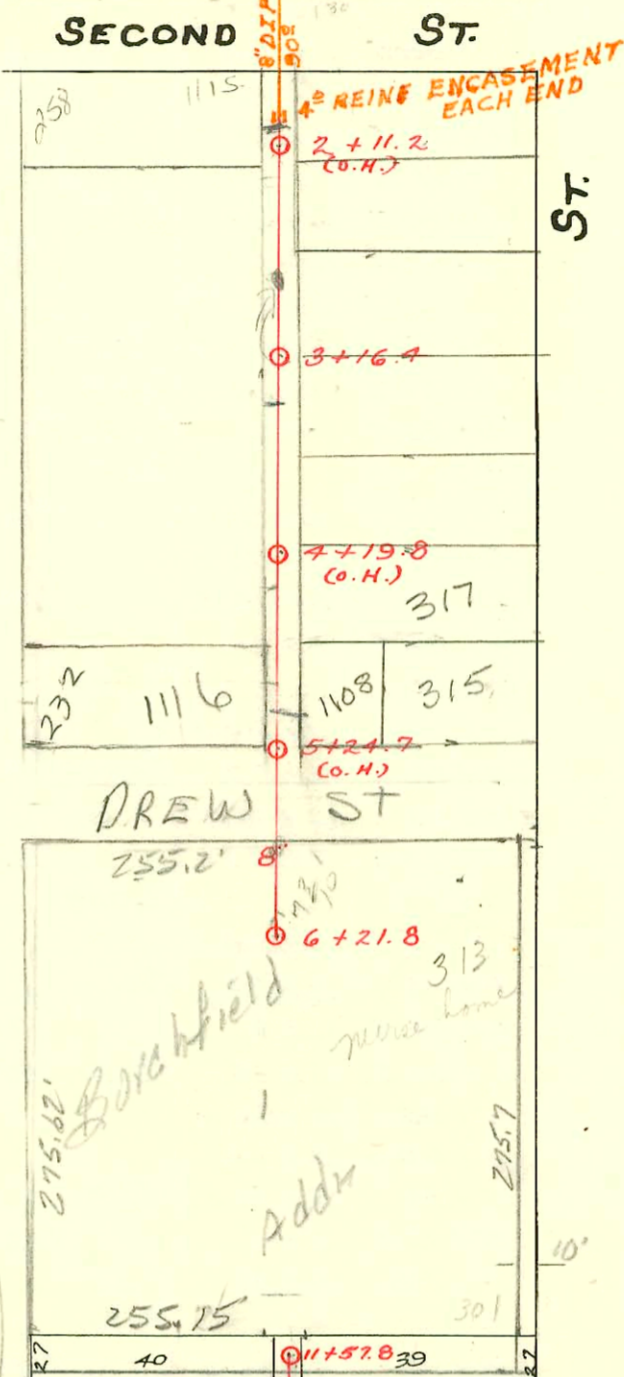


S.S. No. 8 - 1908

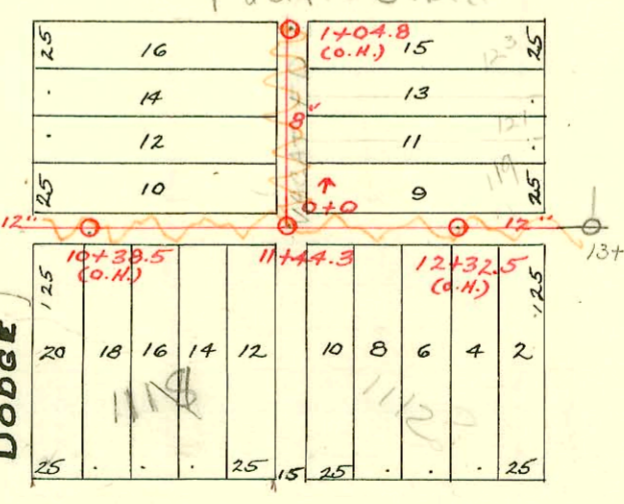
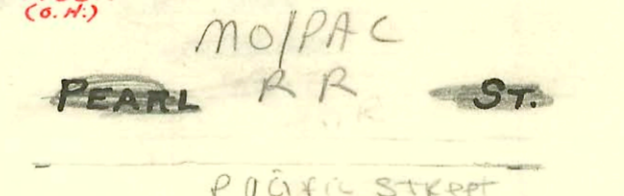
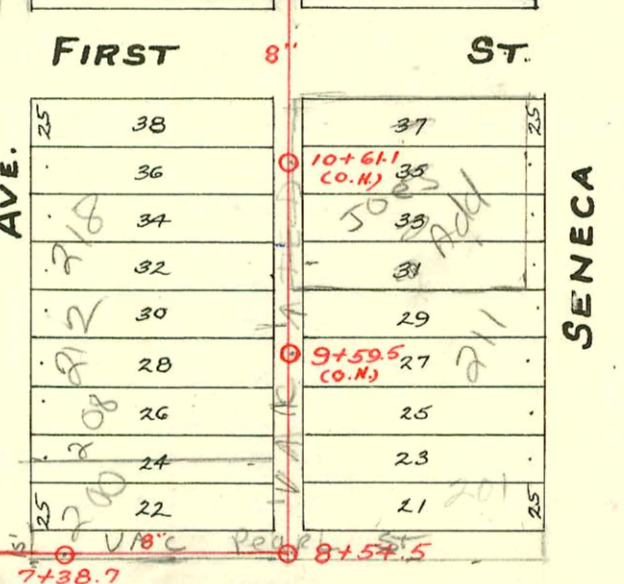
Line
in 97 (?)



RECON SS No 8 & SS No 21
BUILT BY: UTILITY CONTR. INC.
PROJ No DBKJ576064
BOOKED 9-22-77 FROM CG 18



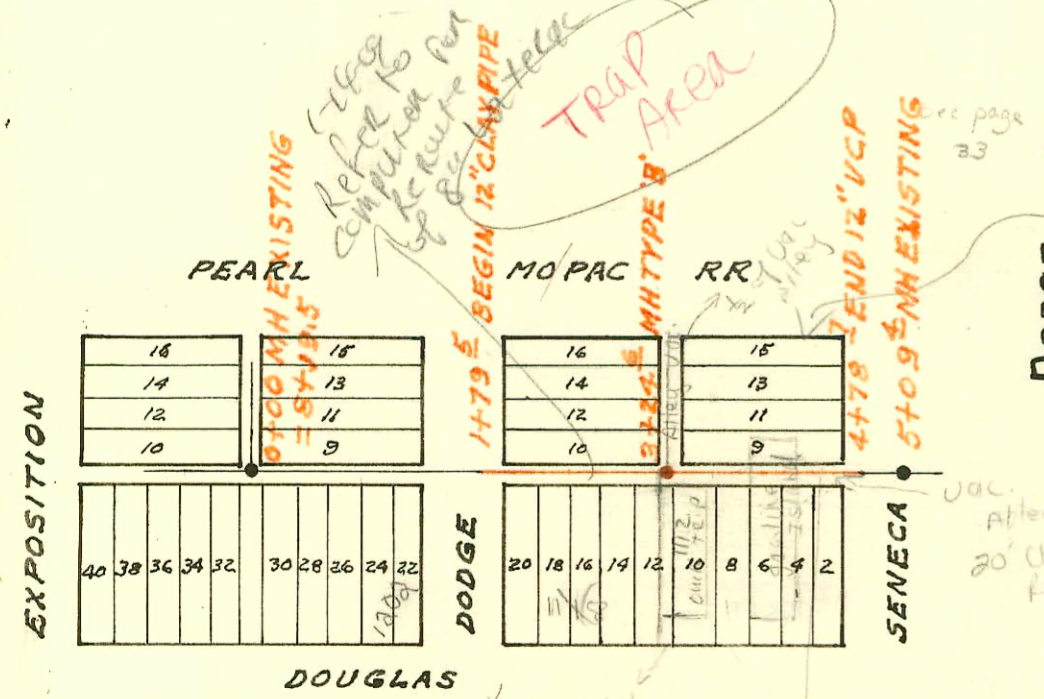
TRAP AREA



Waiver and Consent
Signed by Buddy Smith
System Planning, granting
Quick Trip permission
to install 995 camera
over City Main

RECON PORTION SAN SEWER No 8
IN ALLEY N of DOUGLAS SENECA - DODGE
BUILT BY: UTILITY CONTR. INC.
PROJ. No 542-80-245-80005-000-000-001
BOOKED 9-19-81 FROM AG 16

Plat 8-53



12-41451-7
1112 W. Douglas - 5/0
3 1/2 Ft. East of M.H.
2+88.6

93-2523-7 (1112 W. Douglas) N/C
Top at 3+19.6 (5' Ft East of MH) 1-4\"/>

Advised by Mike Gendel
Sewer MH int on 3/4/93
that Quick Trip had 8\"/>

