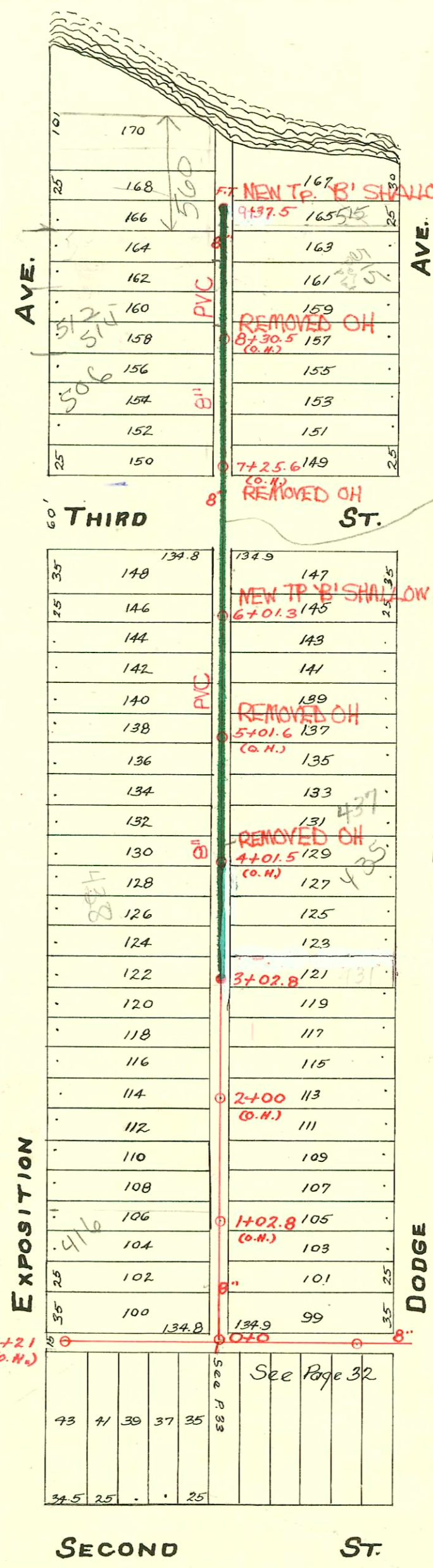


S.S. No. 8 - 1908

RECONNECTIONS

STATION	ADDRESS	DIRECTION
3+15	438 Exposition	Left
3+47	436 Exposition	Left
4+15 <sup>I</sup>	440 Exposition	Left
4+64	442 Exposition	Left
5+15	446 Exposition	Left
5+54 <sup>I</sup>	450 Exposition	Left
5+94	454 Exposition	Left
6+21	458 Exposition	Left
7+20	1212 W. 3RD St.	Left
7+44 <sup>I</sup>	502 Exposition	Left
7+80	506 Exposition	Left
8+41	512/514 Exposition Duplex	Left
8+89	560 Exposition	Left
9+26 <sup>E</sup>	419 McLean	Right
7+56	501 Dodge	Right
6+12	451 Dodge	Right
5+61	449 Dodge	Right
5+38	445 Dodge	Right
5+04	441 Dodge	Right
4+61	437 Dodge	Right
3+38 <sup>96</sup>	435 Dodge	Right
3+12	433 Dodge	Right
3+09	431 Dodge	Right
9+26 <sup>E</sup>	419 McLean	Right
7+56	501 Dodge	Right



TRAP AREA

New Sewer line is centered in alley. Old line was off alignment. Attached is drawing. Two services were rerouted from homes: 9+26<sup>E</sup> Rt. 419 S. McLean, 26' L.F. of 6" pipe & 1-22 1/2" Bend. 7+56 Rt. 501 S. Dodge, 66' L.F. of 6" pipe & no bends. CKB 7-26-96

1995 SANITARY SEWER REHABILITATION PROGRAM-  
 PROJ. NO. 468-82558 (621235)  
 BUILT BY W.B. CARTER CONST. CO.  
 BOOKED 7/26/96 FROM AS BUILTS

1118

SECOND ST.

73	71	39	37	35	See Page 32
34.5	25			25	

### CONSTRUCTION RECORD

### SERVICE RECORD

STATION	ELEVATION		Depth	MANHOLE	4-INCH "Y" BRANCHES		No. of Permit		House Number		DATE OF PERMITS		
	Ground	Grade			North West	South East	North West	South East	North West	South East	North West	South East	
				9+37.5 FT.									
9	111.51	108.16	3.35		9+33	9+30.5							
					9+15.5	9+13							
					8+90	8+87.5	#12953		560 N. Exposition		5-11-22	2-28-69	
					8+64	8+61.5							
8	111.41	108.01	3.40		8+41	8+38.5	#267549 #125		512-1421 Exposition		6-16-24	12-19-77 2-6-24	
					8+15.5	8+13							
					7+89.5	7+87	#1655		506 N. Exposition		7-18-24		
					7+67	7+64.5	#139		515 N. Dodge		2-17-24	3-1-26	
7	111.56	107.86	3.70		7+41.5	7+39	#1992		502 N. Exposition		9-3-24		
					7+16	7+13.5	#1269		1212th 3rd		6-2-24		
					6+39	6+36.5							
6	111.66	107.71	3.95	6+01.3	6+15	6+12.5	#669					4-3-24	
					5+91.5	5+89	#841	#91				4-16-24	2-22-21
					5+66.5	5+64							
					5+40.5	5+38	#1008					5-3-24	
5	111.58	107.56	4.02		5+14.5	5+12	#70	3182	441 N. Dodge		2-2-22	4-27-21	
					4+89	4+86.5	#700		441 N. Dodge		4-7-24	3-17-21	
					4+63.5	4+61	#1294					6-4-24	
					4+40.5	4+38	#917		437 N. Dodge			4-23-24	
4	110.97	107.41	3.56		4+14.5	4+12	#1930	#376	440 N. Exposition		8-25-24	3-4-24	
					3+91.5	3+89	#966		437 N. Dodge		4-28-24		
					3+66	3+63.5							
					3+39.5	3+37	#1054	#462	436 N. Exposition	437 N. Dodge	5-7-24	3-12-24	
3	110.77	107.26	3.51	3+02.8	3+14.5	3+12	#1387		438 N. Exposition		6-12-24		
					2+90	2+87.5	#1688		431 N. Dodge			11-15-23	
					2+64.5	2+62	#1695					11-16-23	
					2+38.5	2+36							
2	109.80	107.11	2.69		2+15.5	2+13	#847	#568			4-16-24	3-26-24	
					1+90	1+87.5	#1749		525 N. Dodge			7-30-24	
					1+64.5	1+62	#741				4-8-24		
					1+39	1+36.5	#844				4-16-24		
1	110.38	106.96	3.42		1+15.5	1+13							
					0+90.5	0+88	#702	#109			4-7-24	2-2-24	
					0+64.5	0+62	#1231	#170	412 N. Exposition	417 N. Dodge	3-1-66	5-28-24	
					0+46.5	0+44	#1052				5-7-24	3-6-25	
0				0+0	0+22	0+19.5							
<hr/>													
Sub-Lot 5 of Sub. 1	109.74	107.12	2.62	1+21 (O.H.)		1+14		#1156	1224 W. 2nd			10-21-38	
						0+89		#29				1-16-20	
						0+64							
						0+39							
0				0+0		0+14							

77-170-7 1-7-21 435 N Dodge - N/C - Buck's Dairy

96-148-7 10-21-26 560 N Exposition - News addition -

#2426 - Top - 423 N. Dodge - 6-17-40 - A & A. Plbg.

#163 - Private line - 420 N. Exposition - 1-5-43 - Kansas Plbg.

#4023 - 6 on 8 wye - 515 N. Dodge - 3-7-57 - Cherry Plbg. Co. Trailer.

#26947-7 - 7/15/71 - 511 N Dodge - minus Herring - (99's. of N.H. v. day)