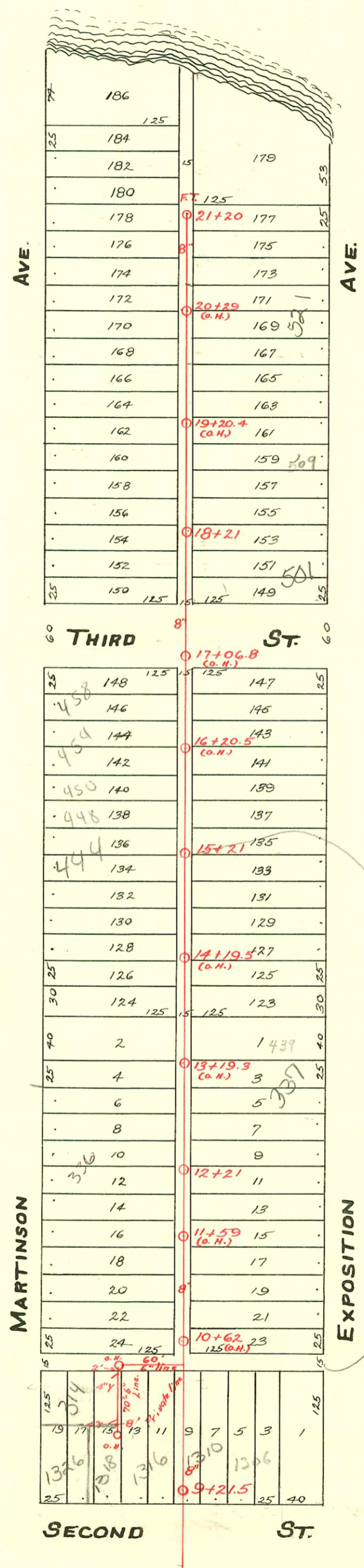


SUB. LAT. No. 2 OF LAT. No. 27  
S.S. No. 8- 1908



TRAP AREA

See Computer -  
City Line  
chg to DUC  
in 2003

CONSTRUCTION RECORD						SERVICE RECORD						
STATION	ELEVATION		Depth	MANHOLE	4-INCH "Y" BRANCHES		No. of Permit		House Number		DATE OF PERMITS	
	Ground	Grade			North West	South East	North West	South East	North West	South East	North West	South East
21	113.55	109.75	3.80	21+20 F.T.	21+08.5	21+06	#2538	7079	532 N. Martinson	533 N. Exposition	11-13-24	6-9-58
					20+82.5	20+80	#1864	#633		533 N. Exposition	8-15-24	11-17-41
					20+60	20+57.5		#1464				6-23-24
20	111.49	109.55	1.94		20+34.5	20+32	#1999		526 N. Martinson		11-3-25	
					20+09	20+05.5	#168		520 N. Martinson		3-9-26	
					19+84.5	19+82		#1673				7-21-24
					19+61	19+58.5	#223		516 N. Martinson		6-16-48	
					19+35.5	19+33		#1643				7-16-24
19	112.32	109.35	2.97		19+10.5	19+08						
					18+85.5	18+83		#1405				6-16-24
					18+59.5	18+57	#490	#1466	510 N. Martinson		5-7-25	6-24-24
					18+35.5	18+33	#190	#2003				
18	111.67	109.15	2.52		18+10.5	18+08	#1596	1400	501 N. R. Exposition	2-13-24	6-15-03	6-14-24
					17+85.5	17+83	#89		504 N. Martinson		1-31-24	
17	111.60	108.95	2.65		17+04.5	17+02		#1873				8-16-24
					16+84	16+81.5	#175				2-12-14	
					16+63.5	16+61	#174				2-12-24	
					16+41	16+38.5	#728	#918			4-8-24	4-23-24
16	111.59	108.75	2.84		16+15.5	16+13						
					15+90	15+87.5		#102	451 N. Exposition		2-12-26	
					15+64.5	15+62	#1474	#850	450 N. Martinson		6-25-24	4-16-24
15	111.32	108.55	2.77	15+21	15+39.5	15+37	#2151	#2163	444 N. Martinson	443 N. Exposition	2-21-92	9-22-24
					15+13.5	15+11	#983	#576	352 N. Martinson	351 N. Exposition	5-1-24	6-23-21
					14+88	14+85.5	#1405	#2003	338 N. Martinson	338 N. Exposition	6-27-50	12-1-39
					14+62.5	14+60		#762	438 N. Martinson	441 N. Exposition	7-10-25	
14	111.04	108.35	2.69		14+37.5	14+35		#752	348 N. Martinson	340 N. Martinson	11/02/87	7-8-25
					14+12.5	14+10	#19470	#3482	340 N. Martinson	429 N. Exposition	2-28-50	2-20-25
					13+86.5	13+84	#957	#98	327 N. R. Exposition	327 N. R. see below	8-31-25	1-22-00
					13+60.5	13+58	#74	#2401	339 N. Exposition	339 N. Exposition	2-14-25	2-14-25
13	111.17	108.15	3.02		13+37.5	13+35		#1141	338 N. Martinson	323 N. Exposition	6-7-38	10-24-24
					13+09	13+06.5	#905	#1709				10-16-25
					12+83.5	12+81						7-24-24
					12+57.5	12+55						
12	111.51	107.95	3.56	12+21	12+34.5	12+32	#1047				7-17-23	
					12+08	12+05.5	#345				3-3-24	
					11+82.5	11+80		#826				4-15-24
					11+57.5	11+55	#55	#1288			1-28-24	6-3-24
					11+34.5	11+32						
11	110.40	107.75	2.65		11+08.5	11+06	#18	#825	316 N. Martinson	315 N. Exposition	2-24-24	4-15-24
					10+80							
					10+59.5	10+57						
					10+33.5	10+31	#229		1316 W. 2nd			6-24-36
10	114.15	107.55	6.60		10+08.5	10+06						
					9+85	9+82.5						
					9+58.5	9+56		2655	1310 W. 2nd			2-20-81
					9+21.5	9+33		#682				6-17-22
9	115.31	107.35	7.96									
8	See Page 35 for the remainder.											

2003-01477-615103-501 N Exposition - Frederick Plog - Main repair, 6" Ardeo 39' S of MH, 2H45, 2H22, 6" 40 PVC, shallow alley cut, repair last 8' of sewerline

Sub 2000-00194 1-21-2005 439 N Exposition (Bldg Add) 4" PVC - changed out 15' at house

2654 - (1310 W. 2nd) 2-20-81 C.L. Rentschler (9+22.5) % (under Bldg)

Top #1641 - 1316 W. 1st  
 2003-01360 Top #758 - 314 N. Martinson - R.H. Anderson - 9-8-27 5/20/03 ASAP Plog - 4" PVC (TREN) CO, sewer line 20' long - Private % underground union  
 Top #342 - 300 N. Martinson - C.A. Baker - 4-6-28  
 #21-Top - 448 N. Martinson - Simmons Plog - 11-18-42.