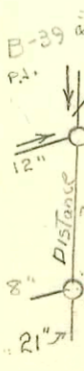
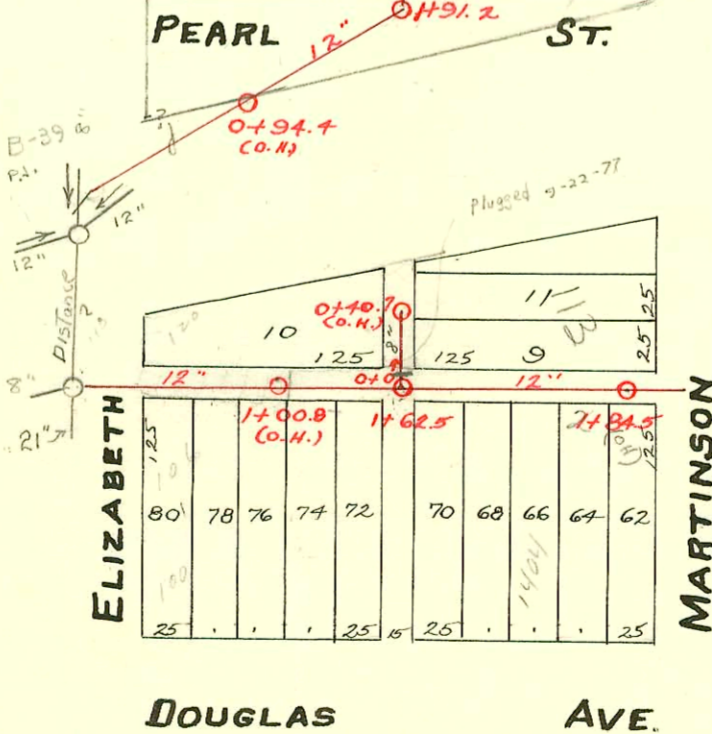
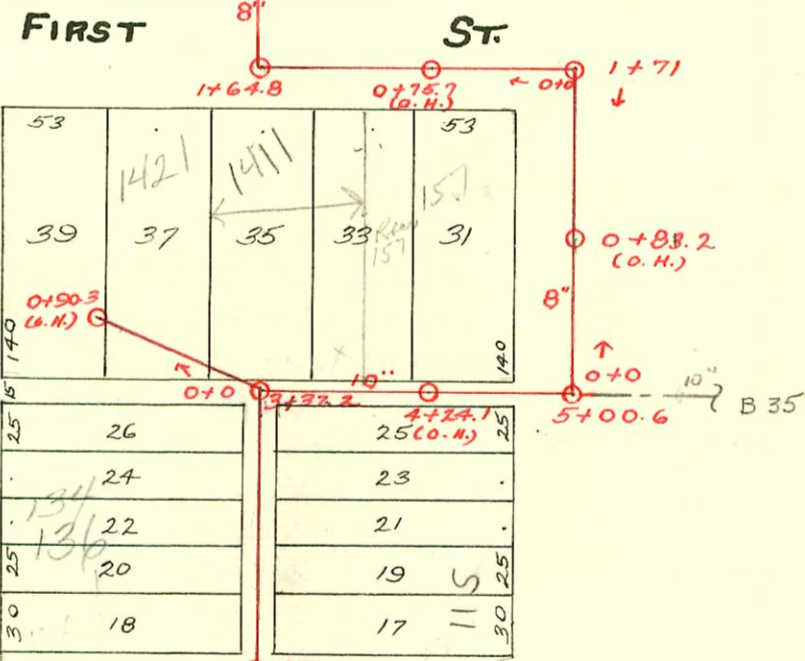
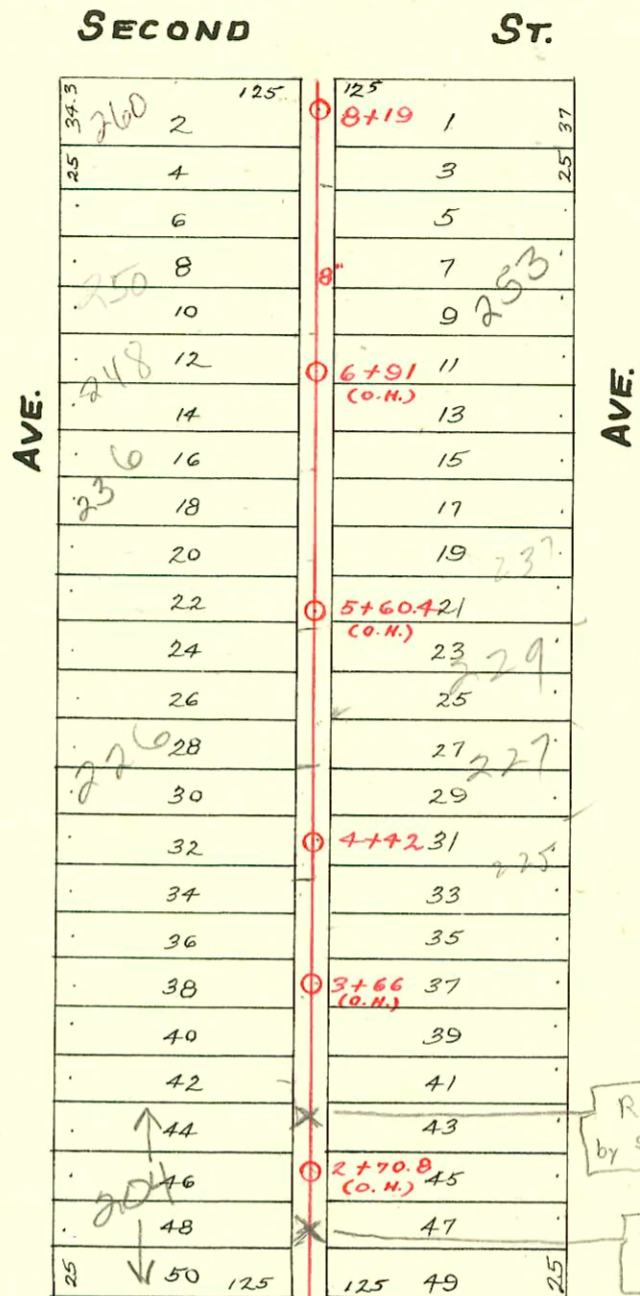


S.S. No. 8 - 1908



See page 35

Doesn't match up on Elizabeth. (pg 39)



CONSTRUCTION RECORD

SERVICE RECORD

STATION	ELEVATION		Depth	MANHOLE	4-INCH "Y" BRANCHES		No. of Permit		House Number		DATE OF PERMITS	
	Ground	Grade			North West	South East	North West	South East	North West	South East	North West	South East
8	115.16	106.98	8.18	8+19	8+09	8+06.5	#1502	#41			11-8-22	1-23-23
					7+83.5	7+81		#1159				8-18-19
					7+58	7+55.5						
					7+34.5	7+32						
7	115.72	106.78	8.94		7+01.0	7+09	#13717		253 R 248 N Elizabeth 247 N. Martinson		8-18-95	9-8-09
					7+71.5	7+09					9-1-95	
					6+86.5	6+84		#1403			11-28-19	
					6+57.5	6+55						
					6+32	6+29.5	#108				3-4-10	
6	115.26	106.58	8.68		6+07	6+04.5						
					5+81	5+78.5	#261	#854	232 N Elizabeth		5-5-10	9-19-21
					5+56	5+52.5	#146		230 N Elizabeth		3-16-10	
					5+31	5+28.5						
5	115.43	106.38	9.05		5+05.5	5+03		#135	227-229 N. Martinson			3-29-09
					4+78	4+75.5	#1160		228 N Elizabeth		9-8-22	
				4+42	4+54.5	4+52						
4	114.92	106.18	8.74		4+22.5	4+20	#5493	#203	224 N Elizabeth	225 R Martinson	3-27-82	7-21-03
					3+97	3+94.5	#1435	#568	220 N Elizabeth		3-26-78	11-15-15
					3+74	3+71.5					12-31-19	
					3+50.5	3+48						
					3+25	3+22.5	#1128				8-4-19	
3	114.14	105.98	8.16		3+02							
						2+99.5		#1616	209 S. Martinson			11-5-23
					2+76	2+73.5						
					2+51	2+48.5		#111	201 N. Martinson			3-7-10
					2+22.5	2+20						
2	114.33	105.78	8.55									
1	114.18	105.65	8.53	1+64.8								
				0+75.7 (O.H.)								
0				0+0								
Lot 27	114.16	105.55	8.61	1+71 (O.H.)								
1	114.18	105.41	8.77									
0			9.13	0+0								
Lot 26				0+90.3 (O.H.)	0+88.5		#611		1437 W. Douglas		11-16-10	
					0+84		#202		1421 R		3-2-11	4-14-17
					0+44.5							
					0+21.1 Rpt		#178		1411 W. Douglas		11-7-22	3-15-22
0				0+0								
5	114.35	105.22	9.13	5+00.6								
4	115.17	105.12	10.02		4+11.5	4+09.2	#1756-3		1577 S Douglas		12-27-87	1-5-70
					3+80		#1774		1402 W Douglas		12-3-23	
3	114.47	105.02	9.45	3+37.2								
						3+29.2						
						2+51.7						
2	114.03	104.92	9.11		2+04.2	2+01.7						
1	113.34	104.82	8.52	1+91.2								
0				0+94.4 (O.H.)								
Sub 1 of 25				0+40.7 (O.H.)								
					0+29.5	0+27						
					0+09	0+06.5						
0				0+0								
Part of Lot 25				2+84.5 (O.H.)								
						2+70	#2145		1402 W Douglas		6-25-42	
						2+44	#36		1400 W Douglas		1-18-26	
						2+24	#509				6-14-21	
2	112.21	104.82	7.39			2+03						
				1+62.5		1+76	#520		1416 W Douglas		1-30-37	
						1+35			1426 W Douglas		5-20-30	
1	111.89	104.72	7.17			1+09.5						
						0+90	#65101		1426 W Elizabeth		3-1-78	
						0+59						
						0+40	#133		1430 W Douglas		5-1-36	
0				0+0								

99-10280-7 5-21-99 226 N Elizabeth

5/2 #21024 (404 W Douglas) during 25/11
 Tap C18983 - Joe Franking - 227 N. Martinson - 4-27-70 (5+00.1)
 2000-00436 #227 Tap - 204 N. Elizabeth - 3-12-28 Van White 1-64-6 W - R. ROTO ROOTR
 #171 Tap - 1430 W. Douglas - 5-27-36 Brodie Plbg. Only cleaned line
 #172 Tap - 1430 W. Douglas - 5-27-36 Brodie Plbg.
 #316 Tap - 117 N. Martinson - 10-10-41 Johnson Plbg.
 #5791 to #5808 inc. - 118 N. Elizabeth - Private line - Trailers - 9-14-51 Eugene Reynolds.
 #5779 to #5782 inc. - Taps - 118 N. Elizabeth - 9-12-51 - Trailers - Eugene Reynolds.
 #948 Tap - 115 N. Martinson - 10-20-47 - C. B. Leidy
 #949 Private line - 120 N. Elizabeth - 9-16-48 - Davidson Plbg.
 8895 - private line 136 N. Elizabeth - 1-9-59 Ralt. Jost
 #24937 - 134 N. Elizabeth - 9/2/69 - Kennedy Plbg. (2+74.2)
 #248 N Elizabeth - advised by Sewer Maint Div 8/30/45 that 250 N Elizabeth ties together with 248 N Elizabeth in yard prior to connecting at main 118 S of Mt 8+19.