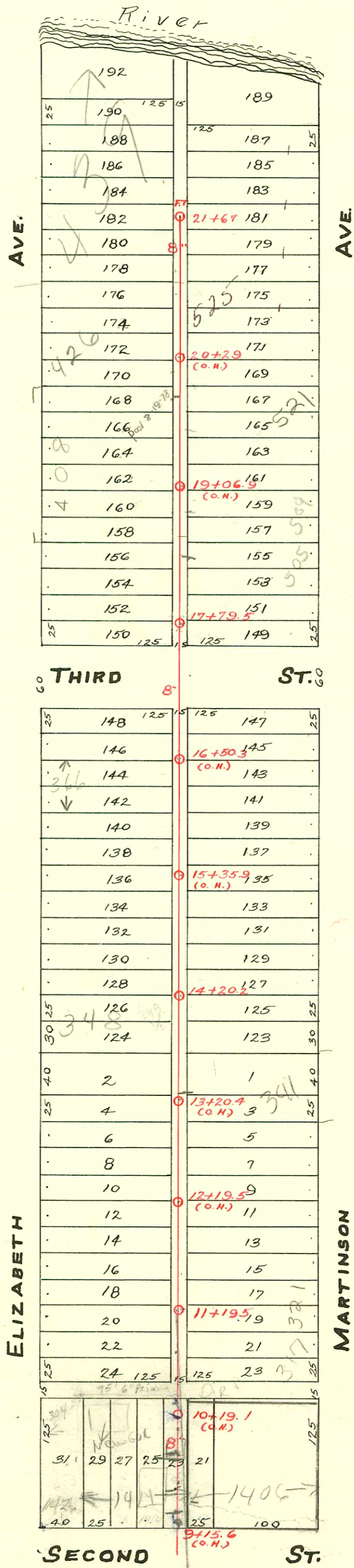


SUB LAT. 1 OF LAT. No 27.
S. S. No. 8-1908.



SWR 2002-63290 12-4-02 1414 w 2nd (Det'd Garage) Miles:

CONSTRUCTION RECORD						SERVICE RECORD						
STATION	ELEVATION		Depth	MANHOLE	4-INCH "Y" BRANCHES		No. of Permit		House Number		DATE OF PERMITS	
	Ground	Grade			North West	South East	North West	South East	North West	South East	North West	South East
				21+67 FT.								
21	113.29	109.58	3.71		21+59.25 21+62.5	21+60	19260		437 McLean	531 N. Martinson	5-4-87	
					21+44.5	21+42	#198					3-19-29
					21+19	21+16.5	#1257					6-2-24
					20+98.5	20+91	#167		536 N. Elizabeth		3-9-26	
					20+68	20+65.5	#755		529 N. Martinson		9-2-26	
					20+42	20+39.5	#1471		525 N. Martinson		6-24-24	
20	112.19	109.38	2.81		4" SCH 40 20+16.5	20+14	#1599		426 N. P. Elizabeth	See Below	10-20-98	3-17-47
					19+90.5	19+88	#269		408 N. Elizabeth		11-26-24	
					19+65	19+62.5	#61		359 N. Martinson		4-14-32	
					19+40	19+37.5	#571				3-26-24	
19	110.60	109.18	1.42		19+14.5	19+12	#33629					
					18+89.5	18+87	#2281	1293	404 N. Elizabeth		9-13-45	6-4-24
					18+64.5	18+62	#1228	#463	404 N. Elizabeth		11-10-25	2-12-24
					18+38.5	18+36	#1536		402 N. Elizabeth		7-5-50	
18	111.36	108.98	2.38		18+13.5	18+11	#974		402 N. Elizabeth		4-30-24	
				17+79.5		17+74.9		4921		501 N. Martinson		12-15-81
17	111.00	108.78	2.22		17+06	17+03.5						
					16+83.5	16+81	#1224				5-8-24	
					16+60.5	16+58	#145	#797	376 N. Elizabeth	457 N. Martinson	6-7-48	12-18-41
					16+35.5	16+33	#5715		445 N. Martinson		7-22-55	
16	110.36	108.58	1.78		16+09.5	16+07	B5544		366 N. Elizabeth		5-1-66	
					15+84.5	15+82						
					15+59	15+56.5						
					15+33.5	15+31	#1485		359 N. Martinson		9-2-49	
15	110.16	108.38	1.78		15+08	15+05.5	#62				1-29-24	
					14+82.5	14+8						
					14+57	14+54.5	#487		355 N. Martinson		5-12-30	
14	112.00	108.18	3.82		14+20.2	14+31.5	#25		350 N. Elizabeth		4-18-49	
					14+02	14+29	#3558		348 N. Elizabeth		5-31-41	
						13+99.5						
					13+77	13+74.5						
					13+53.5	13+51						
					13+28.5	13+26	#521	#1498		341 N. Martinson	4-12-23	10-21-29
13	114.59	107.98	6.61		13+03	13+00.5						
					12+79	12+76.5	#1629	#748		337 N. Martinson	11-7-23	7-7-25
					12+54.5	12+52						
					12+30.5	12+28	#91	#1706		331 N. Martinson	1-31-24	7-21-50
12	114.56	107.78	6.78		12+04.5	12+02						
					11+78.5	11+76	#1926					12-28-23
					11+53	11+50.5	#674		336 N. Elizabeth		6-23-25	
11	115.13	107.58	7.55		11+19.5	11+28.5	#285		317 N. Martinson		3-27-25	
					11+06.5	11+04	#194				2-7-24	
					10+78.5	10+76	#292	#1820	322 N. Elizabeth		5-20-31	12-11-23
					10+52.5	10+50	#71				1-30-24	
					10+29.5	10+27	#590	#1209	304 N. Elizabeth	?	5-22-29	12-5-21
10	114.18	107.38	6.80		10+03.5	10+01						
					9+80.5	10+78	#1821				12-11-23	
					9+52.5	9+50	#2003-00904		1406 W.R. see		4-7-03	
9	114.48	107.18	7.30		4" PVC 9+26.5	9+24	#707		2nd Below		5-9-23	
					9+01							
8	(See Page 37)					8+98.5						

2003-00904-47103-1406 W.R. - ASAP Pibg - 10'6" N of MH 8119(9+25), 27WINDCO, New trap, 4" SCH 40 PVC, WYE TO PICKUP Garage line, tied to 6" clay w/ 6x4 clamp apron 1' from main, 4#45

2002-02423 505 N. Martinson 9/3/02 A Good Plmr - 317'S of MH 21+67(18+50) twin co, trap, 4" sch 40, 1H22, 1V45, tied back to 6" PVC with 6x4 ferreo

98-19980-7 10/30/98-426 N Elizabeth Padgett ex-wye repair 151.5' S of MH (20+15.5) 4" SCH 40, Trap installed, ITWINCO 4V45 w/c 7753-330 N Elizabeth-3-23-83- Behl South 11+79.5 N (12+03.8)

4920-501 N. Martinson 12-15-81 Jim Duggan 17+79.5 N (10' W of MH + 18 E of MH)

* 304 N. Elizabeth connected to 6" line 75 ft W of 12' line

#1654-Top-Wichita Pibg Co. - 400 N. Elizabeth - 2-24-48.
 #B5204 Top-Van Hise - 350 N. Elizabeth - 3-8-66 (14+25.8)
 95-9891-7 63095 1426 Rep as 2nd - Brand -
 95-107557 713-95 1426 3rd 2nd - Brand