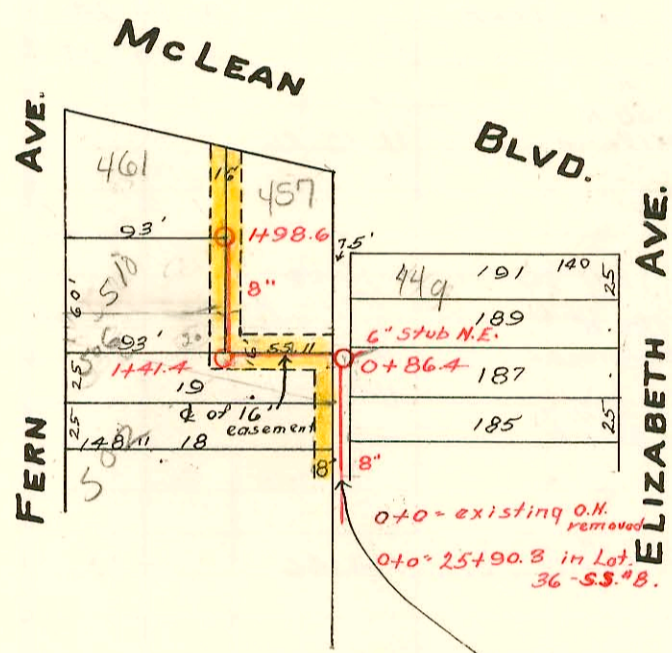


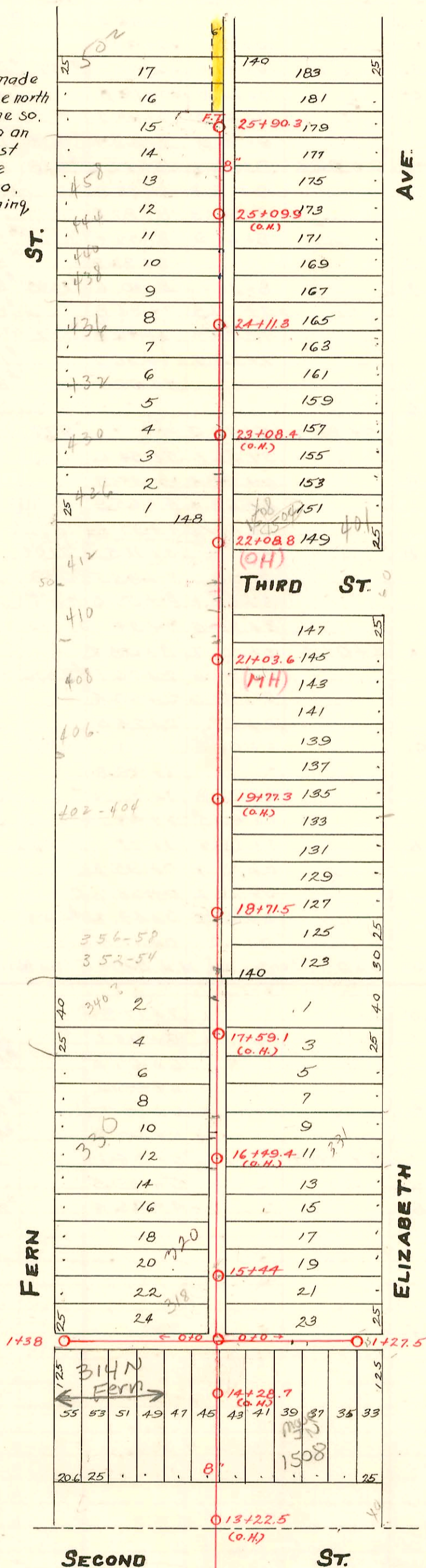
LAT. No. 36 - NORTH OF SECOND ST.  
S.S. No. 8 - 1908

Easement #2504 - From Alva E. Case & Opal Case, his wife, made July 21, 1951. The rear six feet of lots 16, 17, 18 & 19, also the north eight feet of the east sixty-five feet of lot 19, also the so. eight feet of the east sixty-five feet of lot 20, and also an easement beginning eighty-three and elevenths feet east of the southwest corner of Lot 20, thence north to the north line of Lot 24, thence east sixteen feet, thence so. to the So. Line of lot 20, thence west to point of beginning, all in Reeves Addition.



LAT. P - S.S. No. 8  
W.B. Carter - 1951  
Prod. No. C21-33 - BK. M-8.  
Sept. 6, 1951

25+90.3  
24+06.8



TRAP AREA

R-99-3591-7 2/16/99 458 N Fern - AE Henning - 4" SCH40 Wye repair w/Donut - 145H, ITWINCO, Trap installed, 1H22, 1 Fernco clamp

Rep- 2000-02355 - 314 N Fern 10/27/00 - Brand Pllg - 4" SCH40 - Wye Repair - 46' E of MH 1438 (0+95) Repl entire line from N Stubout to main & tied in line from S Stubout, Did not replace line from S Stubout to tie in <sup>NOTE</sup> South Stubout serves 2nd floor fixtures, Dirt Alley cut. ITWIN CO, 2 Kickouts, 2H45

### CONSTRUCTION RECORD

### SERVICE RECORD

STATION	ELEVATION		Depth	MANHOLE	4-INCH "Y" BRANCHES		No. of Permit		House Number		DATE OF PERMITS		
	Ground	Grade			North West	South East	North West	South East	North West	South East	North West	South East	
0+0	114.54	108.55	5.99	0+0									
+15	114.40	108.58	5.82	↓									
0+65	117.68	108.68	6.00	E.	1+09	0+92	249	954687	1508 W. 2ND		2-20-24	3-30-24	
1+27.5	117.48	108.80	5.68	1+27.5	1+15								
0+0	114.54	108.55	5.99	0+0				#346				3-3-24	
0+35	114.42	108.62	5.80	↓									
0+85	114.15	108.72	5.43	W				#970	314 N. R. Fern	See Next pg	10-27-00	8-16-43	
			4.90					#1757				11-28-23	
1+38	113.72	108.82		1+38	1+15.5								
L.A.T. Pass. 0+0	112.9	111.19	1.7	O.H. Removed	0+19.8	0+16.8 E.	1782	15321	502 N. Fern		7-2-52		
0+86.4	112.5	111.28 in	1.2	0+86.4				#58467	449 N. Elizabeth		11-3-76		
	112.4	111.38 out	1.1					#6415	449 N. Elizabeth		5-25-72	11-13-51	
1+00	112.5	111.39	1.1	1+08.8 N				#3744	1517 457 McLean		9-4-51		
1+41.4	112.7	111.53	1.21	1+41.4				#1062	506 N. Fern		3-21-94	7-30-52	
1+98.6	115.1	111.59	3.5	1+98.6	1+60.6 W. M.H. Tap			#5743	510 N. Fern	1521 461 McLean	9-4-53	3-4-57	
					25+90.3 FT.								
25	112.50	111.00	1.5		25+41.3	25+38.8	#792	#3351	438 N. Fern	441 N. Elizabeth	2-16-99	8-7-30	4-19-41
					25+15.3	25+12.8							
					24+86.8	24+84.3	#1001		444 N. Fern			5-15-51	
					24+58.8	24+56.3	#429					3-7-24	
					24+30.3	24+27.8	#98	#91	440 N. Fern	433 N. Elizabeth		3-4-31	6-3-32
24	112.26	110.76	1.5	24+11.3	24+03.8	24+01.3	#4321		438 N. Fern			4-9-51	
					23+78.3	23+75.8							
					23+52.3	23+49.8							
					23+26.8	23+24.3	#391					5-2-78	3-5-24
23	115.2	110.52	4.7		23+01.3								
						22+98.8		#248	430 N. Fern				5-31-24
					22+75.3	22+72.8	#1597		408 N. Fern			7-10-24	
					22+39.8	22+48.3	#1249	#457	426 N. Fern			5-31-24	7-29-18
22	114.3	110.28	4.1		22+21.8	22+19.3	#416		412 N. Fern			3-6-24	
					21+96.3	21+93.8	#1809	#3532	416 N. Fern	401 N. Elizabeth		8-20-64	5-22-69
					21+70.8	21+68.3							1-10-55
					21+45.3	21+42.8							
21	114.25	110.04	4.2	21+03.6	21+19.8	21+17.3			408 N. Fern				
					20+84.2	20+81.7							
					20+69.2	20+66.7		#1024					5-5-24
					20+43.8	20+41.3		#757		367 N. Elizabeth			6-25-29
20	113.8	109.80	4.0		20+18.4	20+15.9	#756		402 N. Fern			9-2-25	
					19+92.9	19+90.4		#789	404 N. Fern	363 N. Elizabeth			7-1-29
					19+67.1	19+64.9	#550	#5753				6-11-50	9-4-51
					19+41.8	19+39.3		#786	404 N. Fern	361 N. Elizabeth			6-29-29
19	114.2	109.56	4.7		19+16.9	19+14.4		#666		357 N. Elizabeth			6-8-29
					18+93.6	18+91.1	#2084		358 N. Fern			4-3-48	
					18+71.5	18+64.2	#1383	#220	356 N. Elizabeth			12-29-66	3-21-29
					18+41.7	18+38.7	#470		354 N. Elizabeth			3-12-24	
18	114.7	109.08	5.7		18+18.3	18+15.8	#1382	#193	352-354 N. Elizabeth			12-29-66	3-14-30
					17+92.5	17+90	#31602	#469	349 N. Fern			3-12-24	
					17+67.1	17+64.6							
					17+41.8	17+39.3		#763		339 N. Elizabeth			9-16-47
					17+16.3	17+13.8							
17	114.3	108.84	5.7		16+90.5	16+88	#1376	#1037	332 N. Fern	335 N. Elizabeth	2-11-24		11-28-27
					16+67.8	16+65.3	#297		339 N. Fern			2-22-96	
					16+42.3	16+39.8	#468		334 N. Fern			2-25-24	
16	114.0	108.36	5.7		16+16.7	16+14.2		#2484		325 N. Elizabeth			3-12-24
					15+71.1	15+88.6							11-6-24
					15+65.3	15+62.8							
15	114.1	108.12	6.0	15+44	15+39.5	15+37	#1486	#1277	320 N. Fern			10-8-23	6-3-24
					14+90.5	14+88	#1653						7-17-24
					14+67.1	14+64.6							
14	113.6	107.88	5.8		13+93.1	13+90.6		#287		1520 W. 1ST			4-13-26
					13+65.5	13+63	#701						7-2-28
					13+43	13+40.5							
13	113.4	107.64	5.8	13+22.5 (O.H.)									

#13106 431 N. Elizabeth 2-22-55 Jack  
 #13105 431 N. Elizabeth 2-21-55 Jack  
 #68979-432.34 N. Fern - 10-9-77 P.L. Crossman (224960)  
 B 1090 - Seal off 410 N. Fern - 3-30-64  
 #2680 - Top - 405 N. Elizabeth - 10-13-50 - Joe McDonald.  
 #3006 - Top - 340 N. Fern - 11-6-50 - Frederick Pilg.  
 #4432 - Top - 1520 W. 2ND - 4-23-51 - Millard Stigers  
 #2745 - Top - 371 N. Elizabeth - 10-2-52 - Tess Hanna, Jr.  
 #4966 - Top - 429 N. Elizabeth - 6-13-51 - J.N. Hanna.  
 #5146 - Top - 435 N. Elizabeth - 7-5-51 - Shepherd Pilg.  
 #5762 - Top - 347 N. Fern - 7-9-53 - Frederick Pilg.  
 #4299 - 6 on 8 wye - 1514 W. 3RD - 4-18-55 - Simmons Pilg. (21+93.8)  
 95-1831-7 2-10-75 354 N. Fern - 6" city wye  
 Repair at Sta 18+66 - Rep Line  
 with 4" SDR 35  
 96-2107 2-22-96 330 N. Fern - wye Rep 188' N. of MH  
 in E/W alley 4" SDR 35