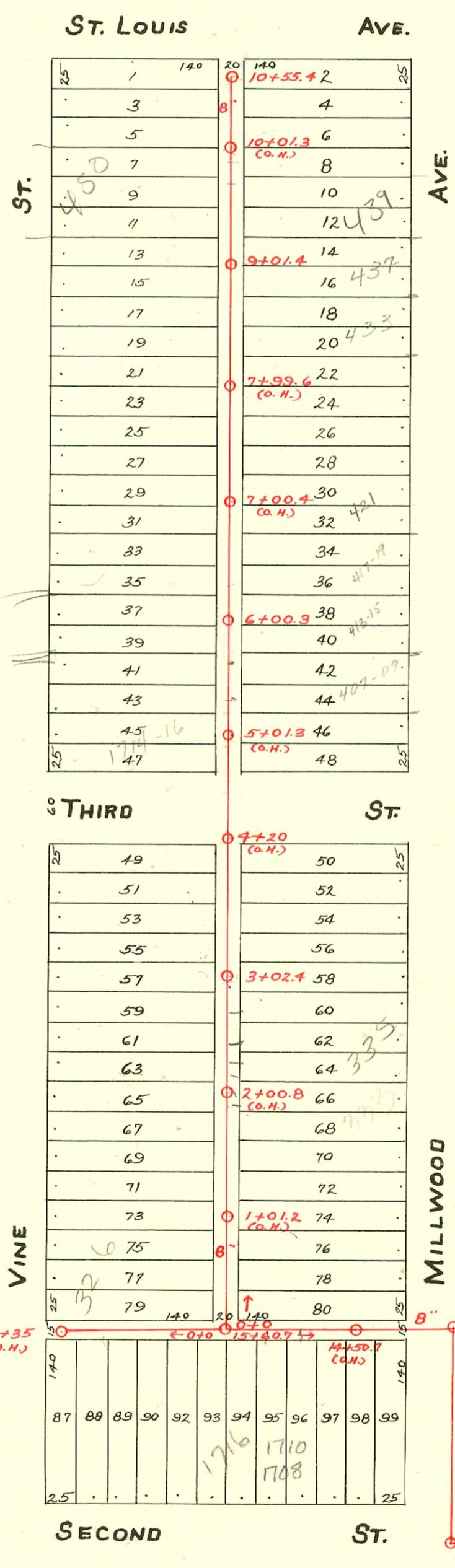


S.S. No. 8 - 1908

1=100



2003-00270- 407 S Millwood 1/30/03
 Boardman Ent- 3H45, 1V45, 1T4 WYE
 Repair (63.3' 50' MH 6100.3- 5+37) Fernco,
 Itwin co, Idico, Newtrap, 4" 40 PUC

do
 2006-00106- 354 N. Vine- 4" clo @ name
 American SWR 1-12-08

CONSTRUCTION RECORD						SERVICE RECORD							
STATION	ELEVATION		Depth	MANHOLE	4-INCH "Y" BRANCHES		No. of Permit		House Number		DATE OF PERMITS		
	Ground	Grade			North West	South East	North West	South East	North West	South East	North West	South East	
				10+55.4 FT.									
10	113.9	111.15	2.8		10+50	10+47.5	#179		447 N. Millwood			3-11-26	
					10+24.5	10+22	#1757		456 N. Vine			3-15-48	
					9+99.5	9+97			450 N.R. Vine	see below	1-16-02		
					9+73.5	9+71	#1783				7-2-52		
					9+48.5	9+46							
9	113.5	110.95	2.6	9+01.4	9+23	9+20.5	#5833		441 N. Millwood			8-1-55	
					8+96.5	8+85.1	#499	C46830	442 N. Vine	437 N. Millwood		5-12-25	9-26-74
					8+71	8+68.5			440 N. Vine	433 N. Millwood		9-30-25	8-11-24
					8+45.5	8+43	#1077	#1890				9-30-25	
8	114.2	110.75	3.5		8+20.5	8+18	#1078		436 N. Vine			12-1-53	
					7+94.5	7+92	#7084		430 N. Vine				
					7+69	7+66.5	#647		431 N. Millwood			6-15-25	
					7+43.5	7+41							
7	113.8	110.55	3.3		7+18.5	7+16							
					6+93.1	6+90.6	#464		424 N. Vine			7-30-46	
					6+67.5	6+65	#555		421 N. Millwood			5-22-25	
					6+41.9	6+39.4	#1890	C63463				12-21-23	10-11-77
6	113.6	110.35	3.3	6+00.3	6+16.5	6+14	#1790	C63462	413-15 N. Millwood			10-11-77	2-12-24
					5+90.2	5+87.7							
					5+64.8	5+62.3							
					5+39.5	5+37	#1163	2003-00200	407-09 R. Millwood	see next pg		8-4-23	1-30-03
5	113.7	110.15	3.6		5+14.3	5+11.8						8-10-76	
					4+88.6	4+86.1	#1172						
4	113.7	109.95	3.8		4+62.9	4+60.4							8-6-23
					3+97	3+94.5	#482	#11				3-13-24	1-3-23
					3+71.5	3+69	#1169						11-25-21
					3+46.3	3+43.8	#481		356 N. Vine			3-13-24	
3	113.4	109.75	3.7	3+02.4	3+21.1	3+18.6	#4247		341 N. Millwood			2-26-53	
					2+94.5	2+92	#1170	#746	352 N. Vine			5-21-24	6-27-22
					2+72	2+69.5							
					2+46.4	2+43.9	#1193		348 N. B. Vine			5-23-24	
2	114.0	109.55	4.5		2+21	2+18.5							
					1+95.4	1+92.9	#805						4-14-24
					1+69.6	1+67.1	#2636	9831	330 N. Vine			12-2-24	12-5-82
					1+44.5	1+42	#252		323 N. Millwood				5-5-09
1	112.9	109.35	3.6		1+19.3	1+16.8							
					0+93.8	0+91.3	#284	#44				6-3-24	2-10-15
					0+68.5	0+66	#219					12-7-21	
					0+43	0+40.5	#267	#110	326 N.R. Vine	313 N. Millwood		3-25-25	10-7-25
					0+17.9	0+15.4	#1069		311 1/2 N. Millwood			5-1-52	
0	113.5	109.15	4.4	0+0 = M.H. 15+60.7 on Main K.									
				1+35 (O.H.)		1+30							
1	114.0	109.37	4.7			1+07.5	#1457		1724 W. 1st St. Vine			6-27-27	
						0+81.5	#447		1722 W. 2nd St.			9-3-15	
						0+56							
						0+31.5	#7001-01380		1718 W. 1st St.	1716		7-17-24	
0	113.5	109.17	4.4	0+0 = M.H. 15+60.7 on Main "K"			#1652						
				15+60.7									
15	112.8	108.59	4.3		15+28.2	15+02.2	2001-01400	#502	1708-1710 R. 2nd	see Below		6-7-01	6-2-11
					14+81.7	14+66.5							
					14+30.7	14+07.7	#1154	#837				11-22-21	4-15-24
14	112.6	108.39	4.3										
13	113.3	108.79	5.2	13+62.1									
12	113.3	107.99	5.4	12+87									

2002-00160 450 N Vine 11602 Padgett Ex- 4" PVC, Twin co, new trap, tied to claytile 72' S of MH 10155.4 (9+33.4) dirt alley cut

2001-02306 911461 1716 W 2nd Royal Pkwy 4" SCH 40 17000, 145 ft, 1 House Trap, Tied to 6" Claytile 6' from main

2001-01400-61701-1708 W 2nd St-Royal Pkwy- 4" SCH 40 on msmt tied to claytile, about 10' from main, alley cut, trap, 4 1/2 TWIN co, 2 MH'S

2000-00539 224960 335 N Millwood - Wichita Exc- 4" PVC - Tied to 6" CLAYTILE - NO MSMT - TRAP + 1 TWIN co

#1051 - Top-406 N. Vine - 5-26-54 Hugh Brown.

#7084 - 430 N. Vine - Lee Layton - 12-1-53 - Used old connection.

#5866 - Top-412 N. Vine - 7-21-53 - Joe McDonald

#4994 - 6 on 8 wye - 1714-16 W. 3RD - 6-8-55 - Frederick Pkwy.

see above