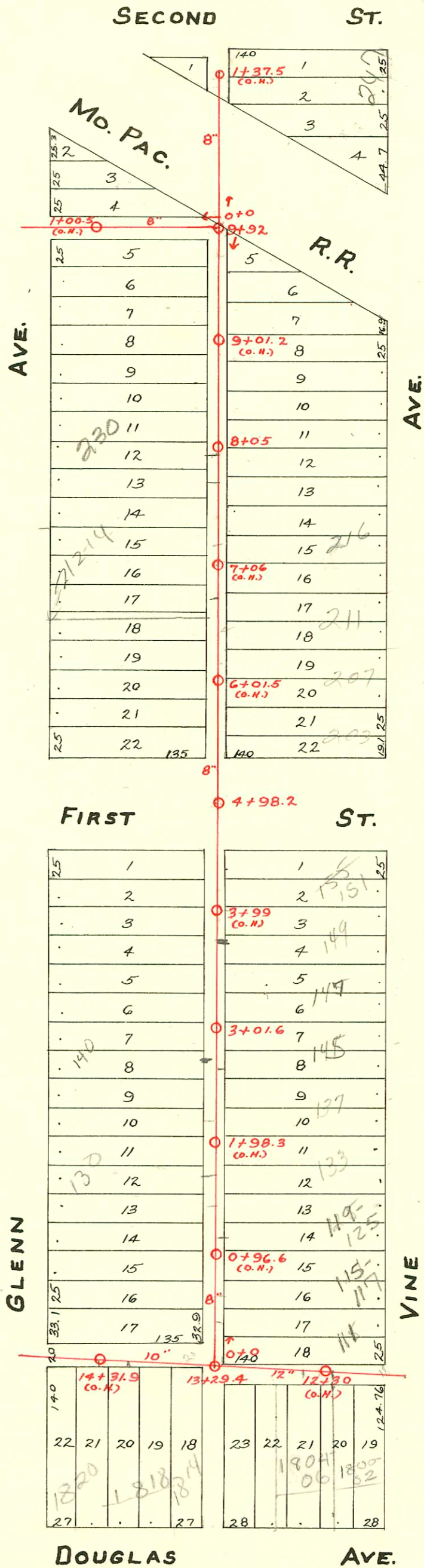


S.S. No. 8 - 1908



25775 7/23/90 - 1820 W. Douglas³⁰ Unit #8 - Hennings (seated 25' S. of Main and 19.5' W. of sidewalk on E. side of Glenn)

25776 7/23/90 - 1820 W. Douglas³⁰ Unit #9 - Hennings (seated 12' W. and 13' S. of Main in Junction of alley)

CONSTRUCTION RECORD

SERVICE RECORD

STATION	ELEVATION		Depth	MANHOLE	4-INCH "Y" BRANCHES		No. of Permit		House Number		DATE OF PERMITS	
	Ground	Grade			North West	South East	North West	South East	North West	South East	North West	South East
				1+37.5 (O.H.)				19916		249 N. S. 900 Glenn		12/31/87
1	113.53	110.93	2.6			1+35		#1424				6-17-24
0	112.95	109.65	3.3	0+0 = M.H. 9+92 on Lat. 33		0+41.5						
						1+25.8						
1	113.5	108.42	5.1					#880	248 N. Glenn			10-13-26
						0+98.2						
						0+71						
						0+45.5						
						0+19.5						
0	113.8	108.27	5.6	0+0 = M.H. 9+92 on Lat. 33								
						9+92						
						9+46.5	9+44	#1347	240 N. Glenn			12-18-25
9	113.6	108.15				9+06.5	9+04	#1178	236 N. Glenn			10-27-25
						8+78.3	8+75.8	#1179	234 N. Glenn	259 N. Vine		9-10-25
						8+53	8+50.5	#618				11-19-10
8	112.0	108.00	4.0	8+05		8+27.2	8+24.7	#120	230 N. Glenn			2-5-24
						7+99.6	7+97.1	#563				9-7-26
						7+76	7+73.5	#610				3-9-24
						7+50	7+47.5	#808				9-7-21
7	112.9	107.85	5.1			7+24.5	7+22	#677	216 N. Glenn			11-29-41
						6+98.5	6+96	#305				5-16-74
						6+73	6+70.5	#886				11-20-11
						6+47.5	6+45					6-23-58
6	114.4	107.70	6.7			6+25	6+22.5	#16	205 N. Vine			1-17-21
						5+99.3	5+96.8					8-22-50
						5+73.9	5+71.4	#468				11-2-16
5	112.3	107.55	4.8			5+48.2	5+45.7	#283				2-25-24
						4+98.2	4+95.7					10-3-89
						4+73.8	4+71.3					10-3-89
4	112.7	107.40	5.3			4+06.5	4+04	#1197	155 N. Vine			5-24-24
						3+80.5	3+78	#1196				10-5-19
						3+49.3	3+46.8					4-16-21
3	111.6	107.25	4.4	3+01.6		3+20.9	3+18.4	#538				4-16-23
						2+94	2+91.5	#1161				9-29-21
						2+68	2+65.5	#259				11-23-21
						2+42.1	2+39.6					2-23-23
2	111.1	107.10	4.0			2+16.5	2+14	#339				4-17-22
						1+90.7	1+88.2					7-14-16
						1+65.3	1+62.8	#327				4-23-21
						1+39.3	1+36.8	#129				7-10-16
1	110.8	106.95	3.9			1+14.3	1+11.8	#648	119-125 N. Vine			3-4-21
						0+88.5	0+86					8-27-02
						0+62.5	0+60	#1273				7-25-21
						0+39.5	0+37	#303				12-22-21
						0+14.2						12-20-15
0	110.6	106.80	3.8	0+0 = M.H. 13+29.4 on Main								
						14+75.4						
						14+52.4						
14	110.5	106.72	3.8	14+31.9 (O.H.)		14+29.4		#983	1824 W. Douglas			4-19-93
						14+03.9		#101	1818 W. Douglas			11-16-26
						13+78.7		#461	1814 W. Douglas			9-26-33
13	110.6	106.57	4.1	13+29.4		13+53.4		#672	1810 W. Douglas			5-2-28
						12+79		#20751				1-31-09
						12+53.5		#736				12/6/18
						12+27.8		#2750				3-20-89
12	110.2	106.42	3.8			12+04.5		#467				2-8-19

Reconnect - 2001-01656 - 7/10/1 - 145 S Vine - Wichita Exc - 4" SCH40 Predco 35' s of MH 3+01.6 (3+66.6) Dirt Alley Cut-Trap, 2 TWIN CO, 1/4 22, 1/4 45, 1/4 45

2001-01245 - 5/2/01 - 1814 W Douglas - 4" SCH40 Tied to PVC Conn - 24' W of MH 13+29.4 (13+53.4) trap installed, 1 TWIN CO

49-13553-7 - 6/23/99 - 149 N Vine - McCullough - 4" SCH40 - 4" Predco 103' s of MH 122V, 2+22, 14" wye - 145 H 2 TWIN CO - 2 Fernco

#1637 - Tap - 1812 W. Douglas - 6-12-39 - Frederick Pibq Co. #24994 - 3-27-90 - 110 N Glenn - Henning - (147 54.4)

#1636 - 1812 W. Douglas - 6-12-39 - Frederick Pibq Co. #24995 - 3-27-90 - 1820 W. Douglas 4" Units + 6" - Henning.

#1838 - Tap - 1812 W. Douglas - 9-15-39 - Frederick Pibq Co.

#2764 - Used old connection - 1810 W Douglas - 10-18-50 - C. G. Colomari.

#5746 - Used old connection - 243 N. Vine - 9-4-51 - Tess Hanna, Jr.

#93-8448-7 (1814 W. Douglas) - 4" Sch 40 - 6" Clay tile line sealed off 2 ft from main and 76 ft west of MH (405.4) No alloy cut #25774 - 7-23-90 - 1820 W. Douglas 4" Unit #7 (20' s of main and 19.5' W of side walk on 15' side of flow #)

94-192447 11-29-96 147 N VINE - repair in alloy only - ABS 45V