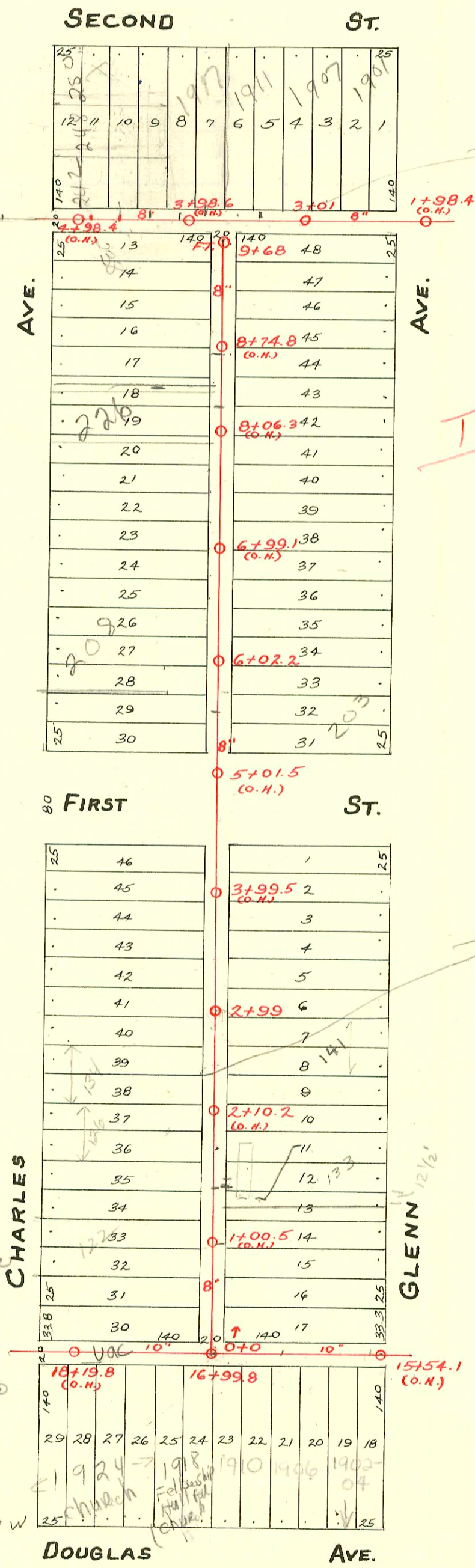


S.S. No. 8 - 1908

1=100



TV Log
Wye at 40'
162' + 188'
W of MH 3101

TRAP AREA

PVC PIPE
SEE AR 1111
SEE RECORD
IN G-11

TRAP AREA

N/C SWR 2004 - 2/11/04 - 141 N Glenn -
Wilks - PVC Saddle 23' S of MH 2179
(2+76) 1V45, 1TWINCO, New trap, shallow
dirt alley cut - 4" PVC

S/O SWR 2003 - 00353 2/11/04 (141 Glenn)
Wilks - Insp Grandstaff said DL dug 10'
in either dir of mount - found no
connection - so he told him to cover it up
(TV Log showed connected in 1998)

SWR 2002 - 02438 9/4/02 1718 W Douglas
(Fellowship Hall) 6" city tap 4" Preeco 8.16' W
of MH 16+99.8 (17+08.4) city main in situ form -
2H22, 1V45, 1TWIN CO, trap

43-005672-0701 - 109 N. Glenn - S/O
6" clay tile line S/O 5' from main and
30.5' ft east of WPL - No alley cut

