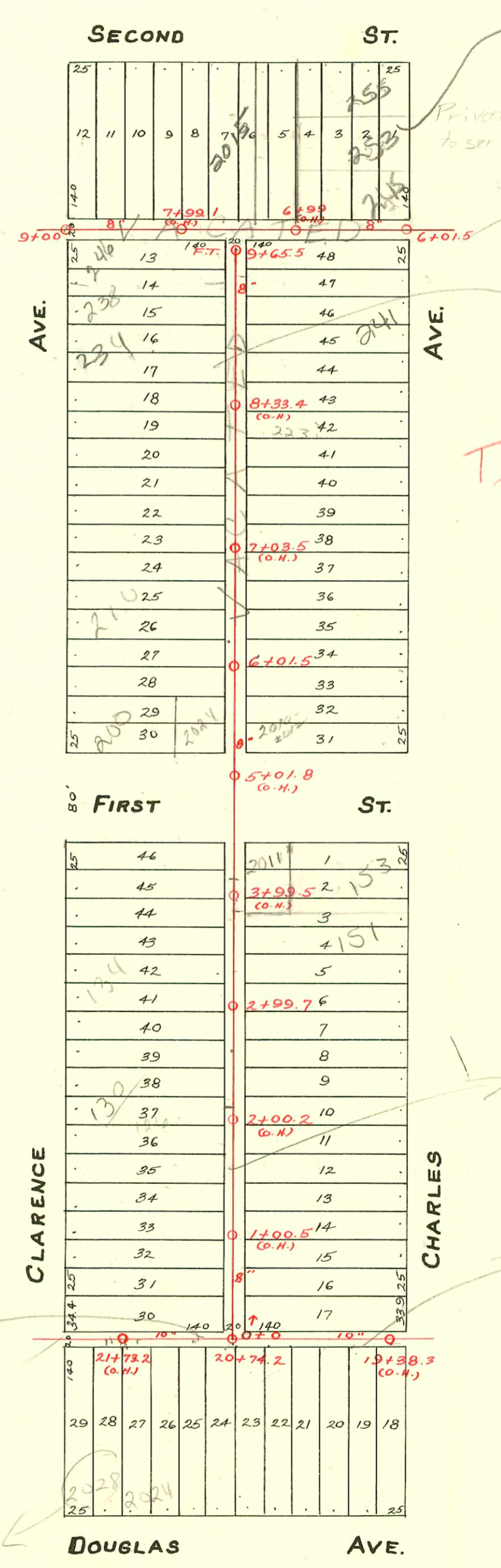


S.S. No. 8-1908

253 & 255 on same  
service line. Need  
to separate & obtain  
PRW. FSM +  
SEE atid  
K-Mail for  
instructions  
4/5/09  
BSC



Private line built  
to serve these lots.

Lined in  
1997  
TRAP AREA

PUC  
1998

PUC  
1998

Lined  
1998

advise DL  
to make  
sure this  
line was  
reconnected  
when main  
rehook  
Bella

2006-01925-151 N Charles - Full replacement - Connected to existing  
6" SD 35 leader from main, replace entire line. Clo - Wich Ex - 8-2-06

### CONSTRUCTION RECORD

### SERVICE RECORD

STATION	ELEVATION		Depth	MANHOLE	4-INCH "Y" BRANCHES		No. of Permit		House Number		DATE OF PERMITS		
	Ground	Grade			North West	South East	North West	South East	North West	South East	North West	South East	
9	113.7	109.82	3.9	9+00									
					8+73.8		#1652				11-9-23		
					8+51		#416		248 N. Clarence		4-23-28		
					8+28								
8	113.8	109.52	4.3		8+01.5								
					7+97.4								
					7+75		#2339		248 N. Clarence		10-16-24		
					7+49.5		#832				4-15-24		
7	114.6	109.37	5.3		7+24								
					6+93.5								
					6+68								
					6+43.7		#469		245 N. Charles		4-3-23		
6	114.9	109.32	5.6	6+01.5	6+18								
5	111.6	109.17	2.5										
					9+65.5 F.T.								
					9+56	9+53.5	#561	#783	246 N. Clarence		5-15-29	7-5-22	
					9+30.7	9+28.2	#432		248 N. Clarence		5-2-22		
9	114.0	109.52	4.5		9+05.4	9+02.9	#782		244 Charles see below		1-9-02	7-5-22	
					8+82.2	8+79.7	#1581		234 N R Clarence		7-9-24		
					8+56.8	8+54.3							
					8+28.7	8+26.2	#49	#549			1-25-22	4-17-23	
8	112.9	109.32	3.6		8+03.5	8+00.5	#202		223 N Charles		4-19-09		
					7+77.5	7+75							
					7+51.9	7+49.4		#493				5-13-22	
					7+26.6	7+24.1							
7	112.1	109.12	3.0		7+01.2								
						6+98.7							
					6+75.8	6+73.3	#210	#1712	224 N. Clarence		6-12-47	12-13-22	
					6+50.4	6+47.9	#202	#1509			3-24-11	11-9-22	
					6+25	6+22.5							
6	111.8	108.92	2.9	6+01.5									
					5+95.7	5+93.2	#49		220 N. Clarence		1-26-26		
					5+70.5	5+68	#166	#617	210 N Clarence		2-12-24	10-23-18	
					5+45	5+42.5	#157		2024 W. 1st		3-5-30		
5	111.7	108.72	3.0					5316		2012 W 1st		3-8-82	
					4+38.3	4+35.8							
4	112.1	108.52	3.6		4+12.8	4+10.3	#819	#753	153 N. Charles		4-7-19	7-26-30	
					3+84.6	3+82.1		#498				8-9-09	
					3+59.2	3+56.7	#818				4-7-19	6-29-99	
					3+33.8	3+31.3	#817	#333	151 N R Charles	see below	4-7-19	6-7-40	
3	111.6	108.32	3.3		3+08.3	3+05.8	#816				4-7-19	8-2-00	
					2+99.7	2+84.4	2+81.9	#459	137 N Charles		10-28-36		
					2+59	2+56.5	#815				4-7-19		
					2+33.5	2+31		#305				5-24-10	
2	111.2	108.12	3.1		2+10.5	2+08	#814		130 N Charles		1-17-59	4-7-19	
					1+85.1	1+82.6	20433	#179	130 N Charles		1-18-89	3-21-11	
					1+59.5	1+57							
					1+34	1+31.5	#6430		122 N. Clarence		11-13-51		
1	111.7	107.92	3.8		1+08.5	1+06	#786	#471			3-21-19	8-8-10	
					0+83	0+80.5	#1161				8-18-19		
					0+57.5	0+55		#902				4-22-24	
					0+29.5	0+27	#1162				8-18-19		
0	111.5	107.72	3.8	0+0 = M.H.	20+74.2 on Main K								
22	111.9	107.92	4.0			21+99							
					21+73.2 (o.H.)	21+83.7	#118				3-22-18		
						21+70	#411				7-9-18		
						21+58.4							
						21+33.2							
21	111.5	107.77	3.5			21+07.5	#410				7-9-18		
					20+74.2	20+82.4							
						20+56.9							
20	111.6	107.62	4.0			20+23.2							
						19+97.6	#59				1-31-20		
						19+72.0	#1189				8-28-19		
19	110.4	107.47	3.0	19+38.3 (o.H.)		19+46.3							

2002-00076 - 234 N Clarence Kansas Ditching - 4" PVC to Replaced all but lower 6', twin co @ house, trap

2000-01013-2015 W 2nd - 4" (2500) Pot to Rooter - 4" SCH40 - 4" TWINCO - NO msmt given

1999-00089 - 151 N Charles - 6/29/99 Reddi Rooter - 4" SCH40 - Repair - 2 Fernco - 1 Twin co (see next pg)

#241 - 255 N. Charles - connected to private line - 2-19-24

#947 - 10-7-21 - Twp.

R #581 2004 w. 1st y/c Sewers 6+01.5