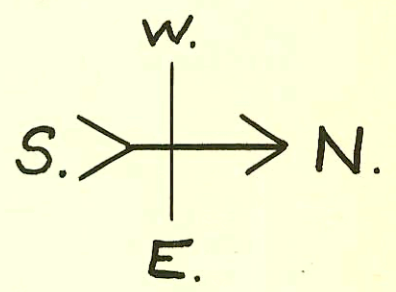
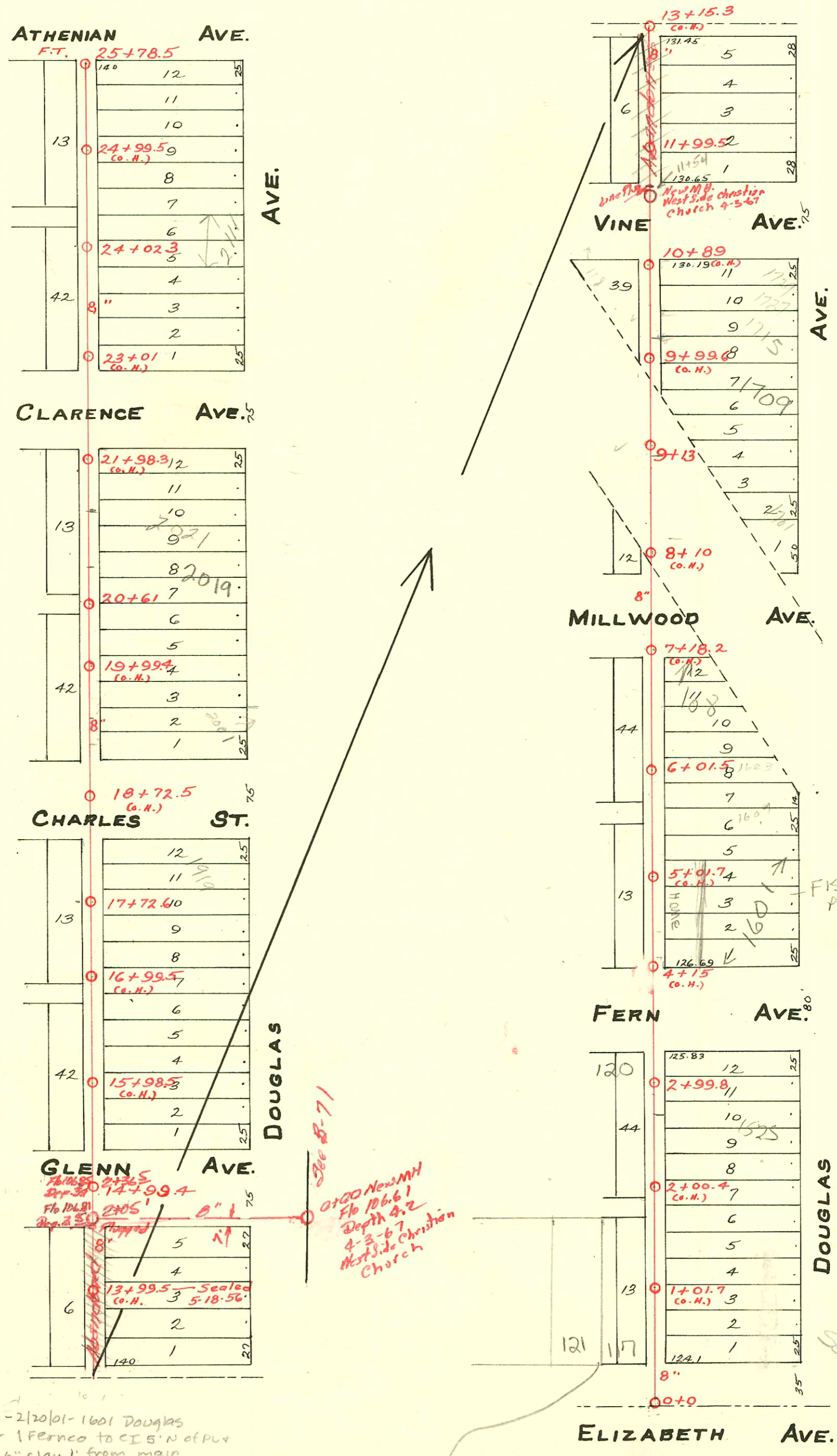


S.S. No. 8- 1908
 LAT. No. 23.
 FROM
 ELIZABETH AVE. TO ATHENIAN AVE.
 SOUTH OF DOUGLAS AVE.

TRAP AREA



2001-00 358 - 2/20/01 - 1601 Douglas
 Brand Plog - 1 Fernco to CI S'N of PLY
 1 Fernco to 6" clay 1' from main

per Dye Test & TV by Sewer Maint crew (M. Grider)
 on 8/23/00.
 121 S Elizabeth Conn. at 184' E of MH 2+99.8
 117 S Elizabeth Conn. at 233' E of MH 2+99.8
 (BR)

CONSTRUCTION RECORD						SERVICE RECORD						
STATION	ELEVATION		Depth	MANHOLE	4-INCH "Y" BRANCHES		No. of Permit		House Number		DATE OF PERMITS	
	Ground	Grade			North West	South East	North West	South East	North West	South East	North West	South East
				25+78.5 F.T.	25+61			#780				12-29-09
25	113.3	109.64	3.7			25+40.7 25+15 24+89.7 24+59.5 24+34						
24	112.5	109.64	3.1	24+02.3		24+08.8 23+77.5 23+52 23+29		#1250 #1895687 #321	211 Douglas			9-30-19 6-5-98 6-2-10
23	112.3	109.24	3.1			23+03.5 21+75.5 21+50		#112637 #437	2521 Douglas			5-2-03 5-25-20
21	110.5	108.84	1.7			21+24 20+96.2 20+70.5		#346				5-29-17
20	110.4	108.64	1.8	20+61		20+45 4" PVC CO 20+19.7 19+94.5 19+48.7	19+69.3	#203-60985 #783 #1241	2019 W Douglas 2010-12 R W. Douglas			4-16-03 9-16-26 8-21-23
19	110.9	108.44	2.5			19+23.7		#171	2001 W Douglas			3-16-21
18	112.0	108.24	3.8			18+09.7 17+84.5						
17	110.8	108.04	2.8	17+72.6		17+60.5 17+34.5 17+10		#332 #353	1719 W Douglas			6-7-10 6-17-10
16	109.8	107.84	2.0			16+84.5 16+64.5 16+34		#160				3-22-10
15	110.7	107.64	3.1			16+09 15+83.8 15+58.5 15+35.8		#443 #704				9-2-15 12-22-10
14	110.6	107.44	3.2	14+99.4		14+48.5 14+33 14+07.5 13+82 13+59		C2444 #541 #542	1825 W Douglas			3-29-67 11-19-12 11-3-15
13	110.7	107.04	3.0			13+35.3 13+07.5 12+79.2 12+54.2 12+28.7		#282 #7176	1815 W Douglas			6-18-12 12-7-53
12	110.1	106.84	3.3			12+03.5		#10 #309	103 S Vine 1184 E Douglas			3-1-33 6-25-15
11	109.6	106.64	3.0	11+99.5		11+79 10+74 10+43.3		#15 #460 #550	1715 W Douglas			3-21-33 11-29-63 10-7-10
10	110.0	106.44	3.6			9+84.5 9+59 9+20	10+20.3	#1584				11-22-22
9	111.6	106.04	5.6	9+13		9+20		#366 #338	1701 W Douglas 1709 E Douglas			11-7-63 10-29-19
8	109.3	105.84	3.4				8+22.5					
7	110.0	105.64	4.4									
6	110.3	105.44	4.9	6+01.5		6+20.8 5+96.3 5+70.3 5+46.6		#404 #218	108 S Millwood 1623 W Douglas			5-1-11 2-16-24
5	109.5	105.24	4.3			5+20.2 4+96.5 4+70.3 4+44.5		C57804 #78 #72	1609 W Douglas 1601 W Douglas 1601 W Douglas	1601 W Residence Douglas Fish Co Douglas		1-15-23 2-20-01 1-15-23
4	110.8	105.04	4.3			4+21		#469 #395				8-6-10 9-25-16
3	111.4	104.84	6.6	2+99.8		3+13 2+81.6 2+70.8 2+44.7	2+65.6	#365 #536				6-20-10 8-25-09
2	112.4	104.64	7.8			2+18.7 1+92.2 1+66.4 1+40.5 1+14.3 1+12 0+65 0+37.2						
1	113.7	104.46	9.3			1+15.8	0+66.8	#788 #347 #243 #238 #74	1501 W Douglas	181 S Douglas 117 Douglas		12-21-22 6-10-07 9-29-19 12-16-53 3-7-18

TAP #999-10-19-21-118 S. Atkinson
 #16-1501 W Douglas-1-10-31-E.B. Brannon-Used old connection.
 #814-Tap at 9+38-1717 W Douglas-4-19-38-J.E. Lansdowne
 #2448-Tap at 9+01-1707 W Douglas-6-25-40-H.J. Geile
 #1346-Tap-112 S Vine-12-29-47-Tess Hanna.
 #B3606-tap-118 S. Vine-Open Sewerline-6-17-65 (Tap 10+49.5)
 #93-102637-5/2/63-Repl.-2001 W Douglas-4" ABS 40-(was not uncovered) Replaced all but lower
 2 ft; 4" trap installed near house. 1/2 ft Fall-Status

SWR 2000-01209 5/16 1705 W Douglas-Brand-
 4" SCH-L-TWIN CO-NO MSMT GIVEN
 SWR 2000-01210-5/16/00-1709 W DOUGLAS-BRAND
 4" PVC-L-TWIN CO-NO MSMT GIVEN