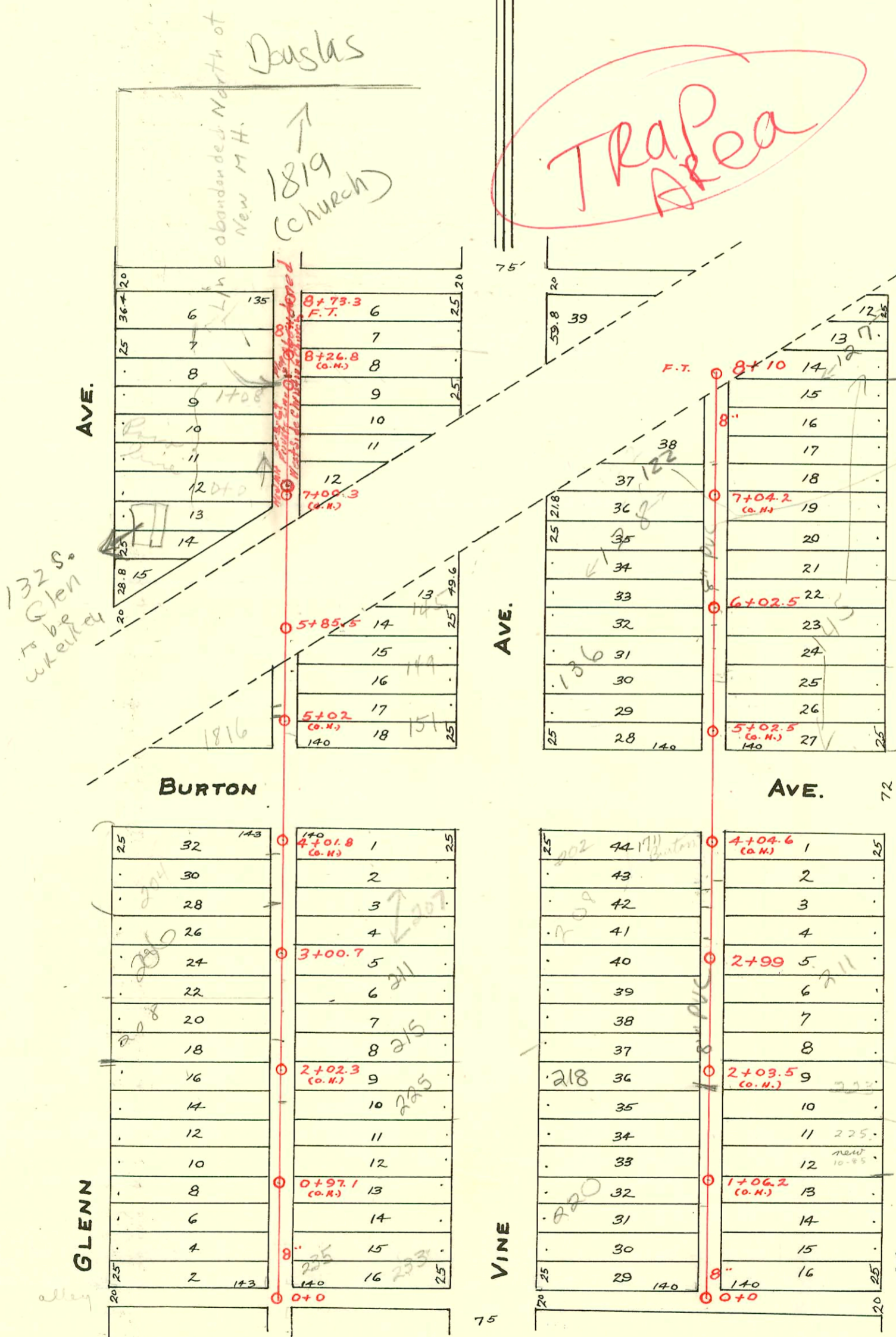


LAT. No. 18
FROM M.H. IN ALLEY NORTH
OF MAPLE, BET. VINE & GLENN

LAT. No. 19
BET. VINE & MILLWOOD
AVE'S.

S.S. No. 8 1908

Trap Area



8-53

Main Rehab
11-25-97.
122 S Vine
May have been
Bob Barnes' works
on private

2003-02384-208 S Glenn - 9/1/03
Add-it-Up - 4" PVC - replace all but
Lower 2' - 14" fall - shallow - 4" co
@ house, 4" trap installed, tied
into 6" SDR35 2' from main -
Dirt alley cut, DL also
replaced line from 2nd to
1st WGL,

218 S VINE - Repair
2003-02729-10/2/03
Betzen Trenching
Replace all except lower
10' to main, New 4" trap,
4" co @ house 4" 40 PVC
shallow, alley cut

- Maple
R-99-10380-7-5/24/99-208 S Vine - Denny's Cleanout - 4" SCH40 - Replace Lower 3' of line - 4" trap installed
- SWR 2002-02267 - 8/19/02 132 S. Glenn (SW corner of 1819 W. Douglas) McCullough
- SWR 2006-00512 repair - 4" SCH40 PVC s/o 7' S of MH + 1' from main
connected to existing 6" SDR35 line from main
25" fall 4" dia trap (2) 224 (2) 45 - mics const. 3-7-06

CONSTRUCTION RECORD

SERVICE RECORD

STATION	ELEVATION		Depth	MANHOLE	4-INCH "Y" BRANCHES		No. of Permit		House Number		DATE OF PERMITS	
	Ground	Grade			North West	South East	North West	South East	North West	South East	North West	South East
8	109.6	107.1	2.5	8+10 F.T.		8+10.5		2000 #277 #1349	127 Millwood		10-3-00 4-12-21 10-12-22	
7	109.9	106.8	3.1		7+78 7+51.5 7+30.5	7+75.5 7+49 7+28	#1227 #628 #1163 #669	#234 #661	122 S Vine 128 S. Vine	141 S. Millwood 145	9-6-29 11-28-22 8-10-49 12-6-10	
6	109.4	106.5	2.9	6+02.5	6+28.5 5+97.5 5+72 5+46.5	6+21 5+95 5+69.5 5+44	#334 #214 #229	#989 #296 #1181 #25	145 145 145 S. Millwood		11-23-21 8-11-22 5-19-22 3-28-11 3-30-20	
5	109.5	106.2	3.3		5+21 4+92	5+18.5 4+89.5	#1429 #229		145 S. Millwood		7-11-85 3-30-20	
4	109.5	105.9	3.6		3+94.5 3+68 3+42 3+16	3+92 3+65.5 3+39.5 3+18.5	#22 #1661 #362 #427	#5799 #125 #362 #427	201 S. Millwood 201 S. Vine 208 S. Vine R	201 Millwood 201 S. Vine 208 S. Vine R	6-10-66 7-20-21 3-13-13 7-31-12 7-19-10	
3	109.9	105.6	4.3	2+99	2+87 2+61.5 2+36.5	2+84.5 2+59 2+34	#1020	#185			10-25-21 4-12-13	
2	109.0	105.3	3.7		2+11 1+85.5 1+58 1+32	2+08.5 1+83 1+55.5 1+29.5	#1079	#575	208 S. Vine R	see next pg	11-16-71 12-27-22 8-24-22 5-27-22	
1	110.4	105.0	5.4		1+04 0+81 0+55 0+32.5	1+01.5 0+78.5 0+52.5 0+30	#294 #295 #433	#1497 #874 #1373	225 S. Millwood 225 S. Vine 247 S. Vine?		2-25-24 12-13-40 2-23-24 5-25-26 11-13-19	
0	110.1	104.74	5.4	0+0								
				8+73.3 FT.								
8	110.07	106.95	3.12		8+63.5 8+37.5 8+11 7+84.5 7+58 7+32	8+61 8+35 8+08.5 7+82 7+55.5 7+29.5	#1467 #799 #881 #881				11-3-22 9-3-21 12-3-17 12-3-17	
7	110.02	106.75	3.27		7+06	7+03.5	#5892		128 S. Vine		7-22-53	
6	110.11	106.55	3.56	5+85.5	6+79.5 5+47 5+20 4+94	6+77 5+44.5 5+17.5 4+91.5	#930 #1753 #2371 #870	#928	145 S. Vine 149 S. Vine 1816 Burton 151 Vine		11-9-06 10-28-27 11-28-23 9-14-50 4-17-24	
5	110.96	106.35	4.61		3+88.5 3+62.5 3+36.5	3+86 3+60 3+34	#870 #366	#71	202 Vine	201 S. Vine	4-17-24 3-2-09	
4	110.16	106.15	4.01		3+09.5 2+79 2+52.5 2+23.5 1+97 1+73.5	3+07.0 2+76.5 2+50 2+51 1+94.5 1+71	#679 #832 #99 #427 #1381 #439	#318	210 S. Glenn 210 S. Glenn 225 S. Vine	see next pg	8-2-11 9-13-21 3-18-09 7-12-09 9-27-29 5-23-21	
3	110.21	105.95	4.26	3+00.7	1+49.5 0+92.5 0+77 0+51 0+24.5	1+47 0+90 0+74.5 0+48.5 0+22.0	#318 #75 #54 #1070 #51	#54	214 S. Glenn 224 S. Glenn 238 S. Vine		5-27-09 2-17-30 1-30-20 10-2-28 12-30-53 3-14-12	
2	109.66	105.75	3.91									
1	109.57	105.55	3.96									
0	109.51	105.35	4.16	0+0								

#95-4474-7: 3-30-95- 211 S. Millwood = 4" PVC 40' = Replaced lower 30' of line to point 1' from Wye - 4" tap installed dirt cut.
 #57232 - 207 S. Millwood - 11' Runway
 #743 - 202 S. Vine - 11-7-66 - Regge Pibg Tap (3+59)
 #2395 - Tap - 1816 Burton - 6-5-40 - Frederick Pibg. Co. No measure
 #211 - Tap - 1807 Burton - 6-12-47 - Robinson Pibg. Co. 9-21-04 KS Ditching (2004-02549)
 #5046 - Tap - 135 S. Millwood - 6-19-51 - Brodie Pibg.
 #5064 - Tap - 135 S. Millwood - 6-21-51 - Brodie Pibg.
 #4039 - Tap - 149 S. Vine - 4-4-55 - E. B. Brinnon 12-24-70 - C & Rutledge (5+59.1)
 #1662 - 115 S. Millwood - 8-5-54 - Jack Durham.
 #6505 - Wye set - 145 S. Millwood - 9-19-55 - Jack Durham.
 11300 608 Wye 145 S Millwood 97m down 9859 4+97.5
 11465 - Tap - 1816 Burton - 10/17/66 - Regge Pibg - (3+61.6)
 #14102 - 225 S. Millwood - 6-25-85 (155.5 N. of m.w.) 8' East