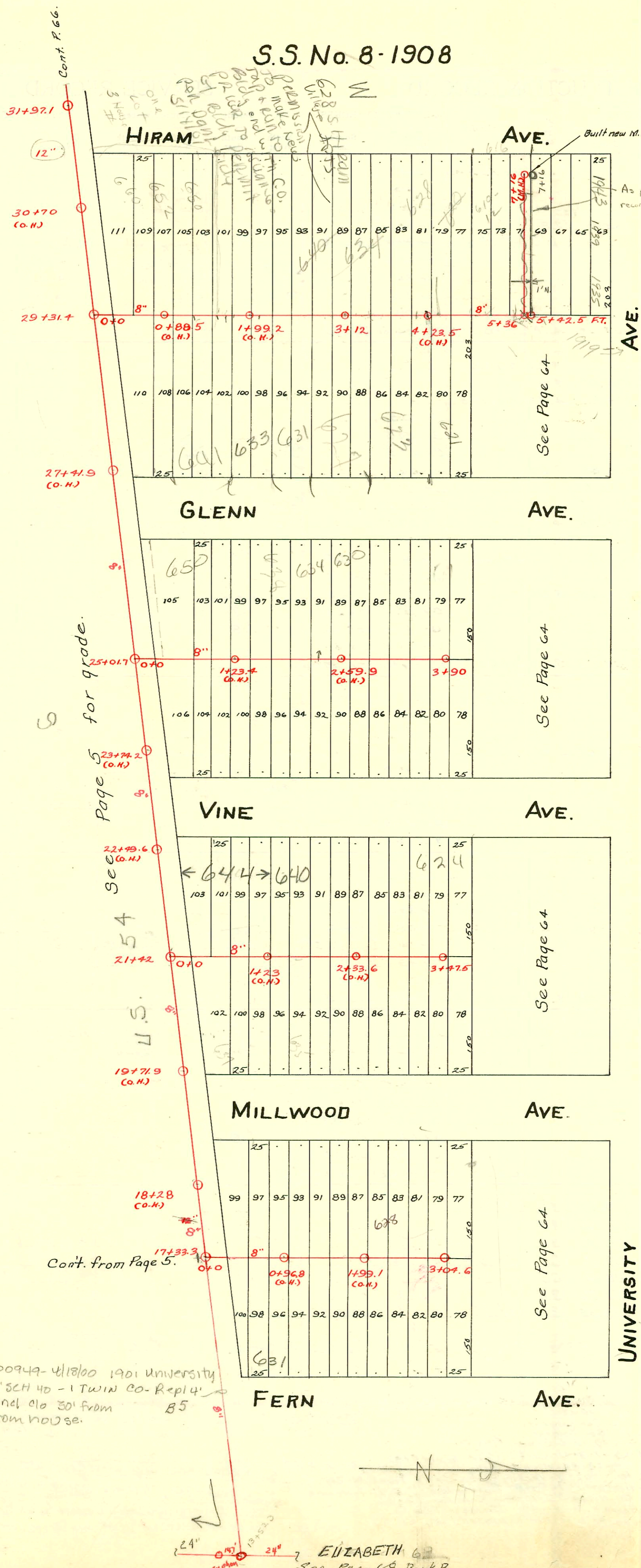


S.S. No. 8-1908



Plot 855

TRAP AREA

N

1" = 100'

Rep-SWR 2000-00949-4/18/00 1901 University
 Roto-Rooter- 4" SCH 40 - 1 Twin CO- Repl 4'
 Section of line incl old 30' from
 Main + 30' from house.

ELIZABETH
 See Page 68 Book B

CONSTRUCTION RECORD

SERVICE RECORD

STATION	ELEVATION		Depth	MANHOLE	4-INCH "Y" BRANCHES		No. of Permit		House Number		DATE OF PERMITS	
	Ground	Grade			North West	South East	North West	South East	North West	South East	North West	South East
7	107.92	105.45	2.47	7+16 (C.M.H.)	7+14 6+90.5		#18195 #452		1943 W 4110 S/D		4-23-07 Henning 7-22-09	
6	107.62	105.25	2.37		6+64.5 6+39 6+36.5 5+86 5+61.5		18194 #18195 #178 #31		1939 W U.H. 12 1935 University 1935 S/D		4-23-07 4-10-09 2-8-09	
5	107.62	105.05	2.57	5+42.5 F.T. 5+36	5+31.5 5+08.5 4+83 5+27.5 4+57.5 4+31.5 4+05	5+29 5+06 4+80.5 4+54.5 4+29 4+02.5	#18195 #593 #415 #13735 #10345 #41.6	#517	1919 University 616 S 620 S 625 S 634 S		7-10-64 8-17-17 7-6-09 5-10-85 2-29-84 7-6-09	5-15-25
4	107.52	104.85	2.67		3+79.5 3+53.5 3+28 3+04.5 2+77 2+54.5 2+29.5 2+04.5	3+77 3+51 3+25.5 3+02 2+74.5 2+52 2+27 2+02	#156 #1112 #1079 #673 #1795	#132	623 S 627 S 630 S 635 S 640 S 645 S 650 S 655 S 660 S		7-26-23 5-14-84 8-2-21 5-20-85	3-31-13 3-27-09
3	107.45	104.65	2.80	3+12	1+79.5 1+54.5 1+29 1+09 w/c 1+03.5 0+79.5 0+51.5	1+77 1+52 1+26.5 w/c 1+01 0+77 0+49	#2282 #5 #20637 #17843 #17594 #570	#93 #3357	644 Hiram 650 S Hiram 652 S Hiram 655 S Hiram		5-1-40 2-1-09 12-30-86 Henning 12-31-86 Henning 10-18-10	3-3-13 5-27-53
2	107.25	104.45	2.8		0+79.5 0+51.5 0+26 w/c	0+77 0+49	#17843 #17594 #570		644 Hiram 650 S Hiram 652 S Hiram 655 S Hiram		5-1-40 2-1-09 12-30-86 Henning 12-31-86 Henning 10-18-10	
1	107.05	104.25	2.8		0+79.5 0+51.5 0+26 w/c	0+77 0+49	#17843 #17594 #570		644 Hiram 650 S Hiram 652 S Hiram 655 S Hiram		5-1-40 2-1-09 12-30-86 Henning 12-31-86 Henning 10-18-10	
0	107.05	104.05	3.00	0+0 - M.H.	29+31.4	on Main D.	#17843		644 Hiram 650 S Hiram 652 S Hiram 655 S Hiram		5-1-40 2-1-09 12-30-86 Henning 12-31-86 Henning 10-18-10	
3	107.57	104.22	3.35	3+90	3+83.5 3+60 3+35 3+09 2+83.5 2+57.5 2+32	3+81 3+57.5 3+32.5 3+06.5 2+81 2+55 2+29.5	#1294 #817 #201	609 S Vine 634 S Glenn		9-16-29 11-8-17 3-23-21		
2	107.47	104.02	3.45		2+06 1+80.5 1+54.5 1+29 1+02.5 0+77 0+54	2+03.5 1+78 TAP 1+52 1+26.5 1+00 0+74.5 0+51.5	#399 #1545 #86 #5357 #398 #179	#881 #519 #296	634 S MC Glenn 630 S Glenn 639 S Glenn	no permit #	3-23-21 5-12-21 7-3-00 2-21-21 7-9-21 11-26-21	12-7-20 8-31-14 5-27-53 2-25-24
1	107.57	103.82	3.75		0+77 0+54 0+26 w/c	0+74.5 0+51.5	#398 #179	#296	639 S Glenn		7-9-21 11-26-21	
0	107.17	103.62	3.55	0+0 - M.H.	25+01.7	on Main D.	#17843		639 S Glenn		7-9-21 11-26-21	
3	108.70	104.16	4.54	3+47.5	3+41 3+26.5 3+01	3+38.5 3+24 2+98.5	#259	624 S Vine		4-7-21		
2	109.00	103.86	5.14		2+75 2+47 2+20.5 1+95.5 1+69.5 1+43.5	2+72.5 2+44.5 2+18 1+93 1+67 1+41	#2827 #342 #1885 #665 #905	#945 #665 #1210	627 S Millwood 636 S Vine 635 S Millwood 640 R Vine		3-15-46 4-6-25 8-18-24 6-20-25 9-28-21	4-25-24 12-6-21
1	108.40	103.56	4.84		1+18.5 0+92 0+64 0+40	1+16 0+89.5 0+61.5 0+38.5	#670 #576 #671		644 S Vine 648 S Vine		6-22-25 3-26-24 6-22-25	
0	107.40	103.26	4.14	0+0 - M.H.	21+42	on Main D.						
0	107.76	104.06	3.70	3+04.6	3+00 2+84.5 2+61.5 2+35	3+00 2+97.5 2+82 2+59	#199 #464 #614		623 S Vine		4-17-09 10-10-12 8-4-20	
2	107.96	103.66	4.3		2+09 1+60 1+42.5 1+12	2+32.5 1+96.5 1+57.5 1+40 1+09.5	#743 #670 #72 #33		627 S Vine 629 S Vine		9-6-21 7-28-11 3-22-12	
1	107.96	103.24	4.7		0+89 0+60.5 0+34.5	0+86.5 0+58 0+32						

#245 - 5-10-78 (641 S Glenn) - Henning - (1+39.0 sp. 6" clay)
 #811 - 642 S. Millwood - 9-7-21
 #2797 - Top - 624 S. Glenn - 3-11-46 - Tess Hanna
 #495 - Private line - 627 S. Fern - 3-20-52 - P.C. Fish - Trailer
 #6763 - 6 on 8 wye - 615 S. Glenn - Robinson P/bq. - 10-28-53
 #4086 - 6 on 8 wye - 635 S. Millwood - C. Frank McCoy - 4-29-55
 #9979 - 8 wye 628 S. Millwood - Ray McCoy P/bq. 4-9-59 2+01
 #14120 - top 530 S. Glenn - Kendall P/bq. 4-26-61 (MN 25+01.7 on 0+0)
 #16004 - 637 S. Millwood - Davis Fleming - 8-9-62 (0+64)
 B-1064 - 1917 University - Pappa P/bq. 3-25-64 - top on M.H. 5+36
 MC top C61631 - 612 Hiram J. Kendall - 7-29-78 (640 S)
 MC top C61637 - 610 Hiram J. Kendall - 7-29-78 (649 S)
 #25730 - 7-18-90 - (631 S. Fern) - Henning (2' from main and 40' W of MH)
 #26401 - 10-29-70 - 650 S. Glenn - 50' 5" off floor Prop Line
 95-1320-7 1-31-95 624 S. Vine garage 4" clay s/d 24' S of MH and 77' W of Prop Line