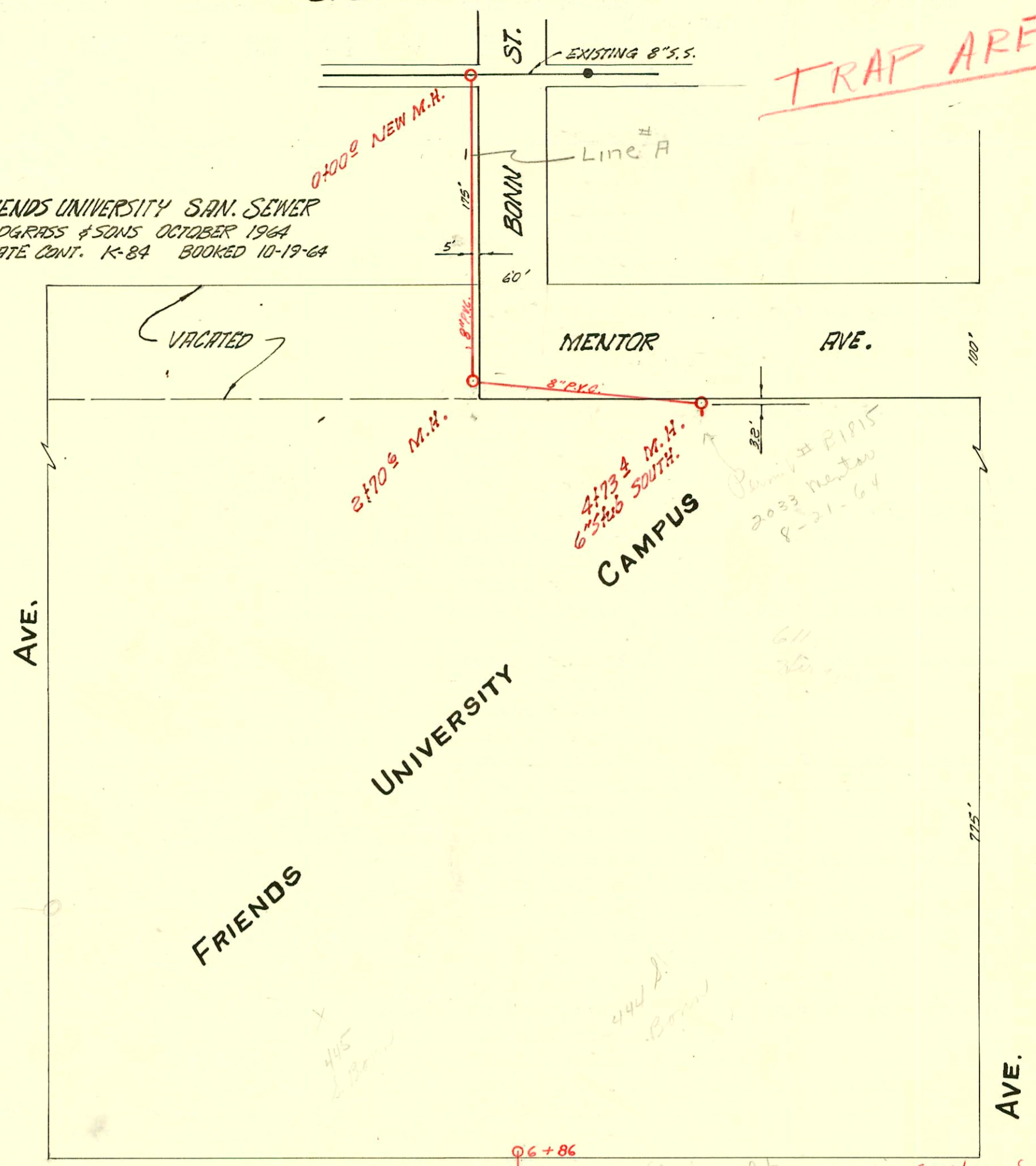


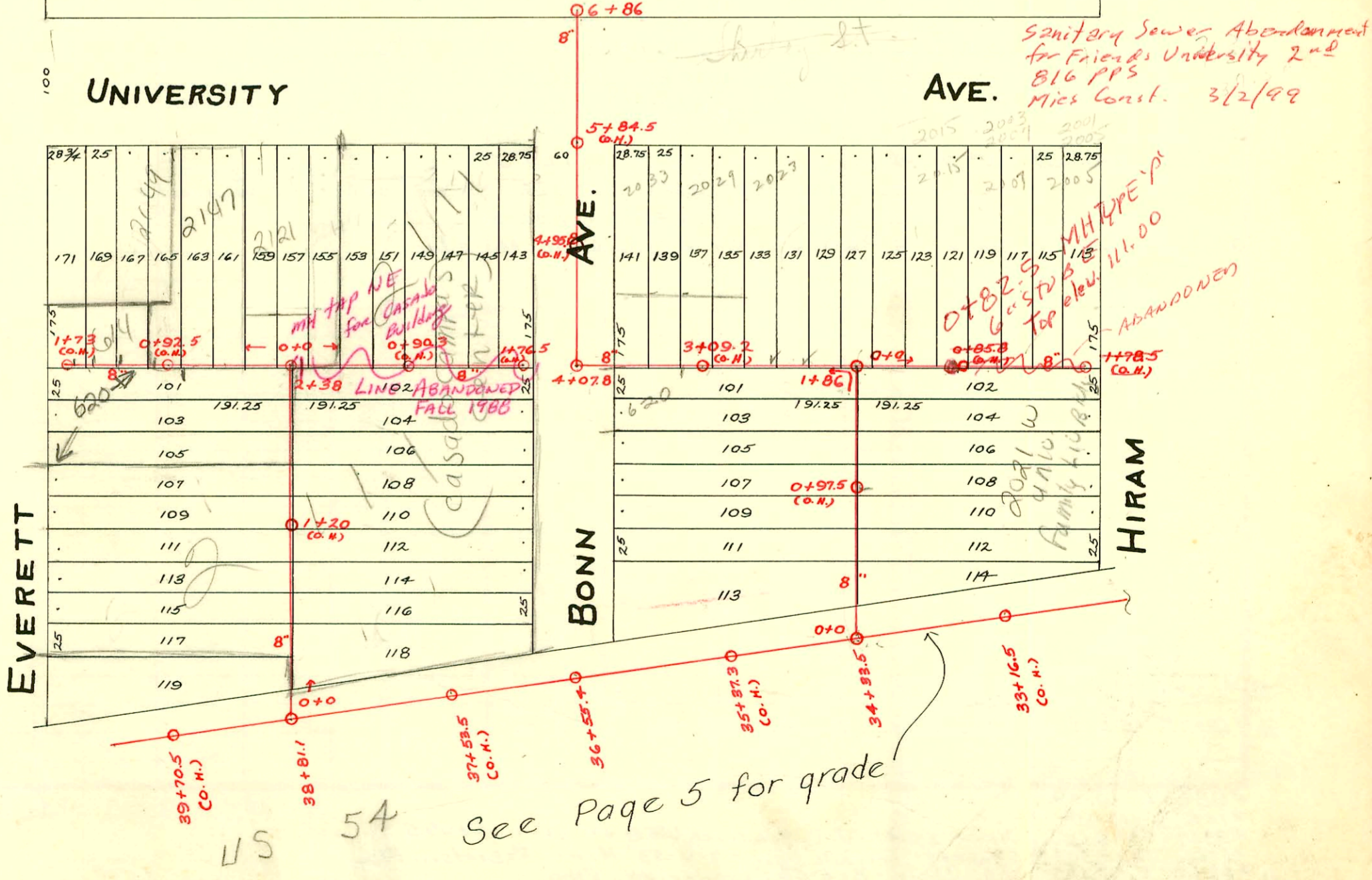
# S.S. No. 8 - 1908

FRIENDS UNIVERSITY SAN. SEWER  
SNODGRASS & SONS OCTOBER 1964  
PRIVATE CONT. K-84 BOOKED 10-19-64

**TRAP AREA**



5617  
E 29th



Sanitary Sewer Abandoned  
for Friends University 2nd  
816 PPS  
Misc Const. 3/2/99

2015 2023 2005  
2015 2009 2005  
0+82.5 MHTYPE 1st  
6\"/>

See Page 5 for grade

2002-00353 - 2033 w University - 2112 Redd Rooter - 4" PVC, 14" CO, 14" HOR

### CONSTRUCTION RECORD

### SERVICE RECORD

STATION	ELEVATION		Depth	MANHOLE	4-INCH "Y" BRANCHES		No. of Permit		House Number		DATE OF PERMITS	
	Ground	Grade			North West	South East	North West	South East	North West	South East	North West	South East
				1+78.5 (o.m.)	1+76.5							
					1+48.5							
					1+25.5							
1	108.04	105.14	2.9	0+82.5	1+00	6" SUB F	99-106-127		2021	Family Living w/UNIV.	5-25-99	
	111.00	New Mt			0+80.5							
					0+52.5							
					0+36							
					0+32							
					0+09							
0	109.54	104.74	4.8	0+0	M.H. 1+86 on Lat. 57.							
6	110.00	105.15	4.85	6+86								
5	109.70	105.05	4.65									
4	109.38	104.95	4.43	4+07.8								
					3+70.5							
					3+50.5							
					3+27.5							
3	109.45	104.85	3.60		3+02				614510	Bonn	8-1-88	
					2+77				2023	University	2-17-41	
					2+51.5				2023	University	8-7-68	
2	109.45	104.75	4.70		2+28.5				2023	University (Trailer)	9-14-10	
					1+94							
					1+86	1+65.5	1+63		#1	619	Hiram	1-4-26
					1+39.5	1+37						
1	108.55	104.65	3.90		1+11	1+08.5						
					0+90.5	0+88						
					0+64.5	0+62						
					0+43.5	0+41						
0	108.05	104.55	3.50	0+0	M.H. 34+33.5 on Main "D"							
					1+76.5 (o.m.)							
					1+74							
					1+43.5							
1	108.13	105.68	2.45		1+18.5							
					0+95.5							
					0+70.5							
					0+45							
					0+24.5							
0				0+0	M.H. 2+38 on Lat. 56.							
					1+73 (o.m.)	1+71						
					1+58							
					1+35.5							
1	108.77	105.68	3.09		1+08							
					0+74.5							
					0+49.5							
					0+24							
0	108.37	105.28	3.09	0+0	Sta. 2+38 on Lat. 56.							
					2+22	2+19.5						
					1+96.5	1+94						
					1+71	1+68.5						
					1+45.5	1+43.0						
1	108.67	105.20	3.47		1+17.5	1+15						
					0+91.5	0+89						
					0+63	0+60.5						
					0+38	0+35.5						
0				0+0	M.H. 38+81.1 on Main "D"							

LINE # R.	0+00	1+00	2+00	3+00	4+00	5+00
	111.3	107.40	3.9	New 0+100		
	111.1	107.60	3.5			
	110.8	107.80	3.0	top 2+65		
	110.8	107.94	2.9	3+70		
	110.1	108.00	2.1			
	110.2	108.20	2.0			
	110.3	108.35	2.0	4+73	6" SUB 5.	

Please Interceptor 1999-00792-1060199-2100 W University - Casado Lampus  
 #16429 - 2105 University - Henning 6-2-86 (43' W of MH)  
 #16430 - 3129 - (90' W of MH)  
 C19945-2160 University (Stadium) North Number 7-2-70 (5' 10" N of MH on Private line - no stamp)  
 #1125 - Tap - 2117 University - 12-20-27  
 #116 - Tap - 615 Hiram - 3-2-38 - Geo. Sargent.  
 #990 - Private line - 615 Hiram - Geo. Sargent.  
 #3127 - Tap - 2033 University - 2-78-41 - Cherry Plbg. Co.  
 #3766 - Tap - 2003 University - 7-3-41 - Carl E. Carr - Tap at 0+92  
 #1557 - Set Y - 620 Bonn - 4-28-42 - Wichita Plbg. Co. - 8-3-88-80' S of MH 0+00 (also known as 2+38 on MH line)  
 #216 - Private line - Trailer - 2023 University - 2-25-54 - C. Frank McCoy  
 #1370 - Tap - Friends University - 1-5-48 - Private line - J.E. Lansdowne  
 #1604 - Private line - 611 Hiram - 2-11-48 - R. La Foy - (Bonn)  
 Tap #2277 - 441 S. Bonn - 10-31-49 - Davidson Plbg. Co.  
 Tap #6466 - 614 Everett - 11-15-51 - Robinson Plbg. Co.  
 #29189 - 2100 University - Seal off - Al Henning - 11/30/71  
 #4001 - 2100 University - 18-26-51 - Jack Branna (Old Field House)  
 4" PVC tied into existing 6" SDR 35 Cte - private serv - 4' downstream of private MH - 1000 gal - 1445  
 SW R2002-3061-014 EVERETT - see below  
 SW 2002-3066-1143-02 (2149 W UNIV) J.A. Henning  
 2149 University + 614 S Everett was tied together  
 5/0 w/ concrete 111' W of MH 0+00 (IT1)